

Converting Colors

Android(4289161340)

Have a look what the booklet for
Android(4289161340) contains.

Android(4289161340)	3
<i>Conversions</i>	4
<i>Details</i>	6
<i>Harmonies</i>	11
<i>Previews</i>	23
<i>Color Blindness Simulation</i>	26
<i>CSS Examples</i>	29

Color

Android(4289161340)

Conversions

Conversions Part 1

Format	Color
Hex	A7687C
RGB	167, 104, 124
RGB Percent	65%, 41%, 49%
CMY	0.3451, 0.5922, 0.5137
CMYK	0.00, 0.38, 0.26, 0.35
HSL	341°, 26%, 53%
HSV	341°, 38%, 65%
XYZ	24.5248, 19.5714, 21.5538
YIQ	125.1170, 31.1280, 19.5760

Conversions

Conversions Part 2

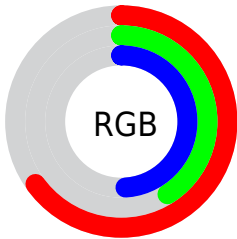
Format	Color
R_{YB}	167, 104, 124
Decimal	10971260
CIE _{Lab}	51.35, 28.02, -0.44
CIE _{LCh}	51, 28.022, 359.097
Yxy	19.5714, 0.3736, 0.2981
Android (android.graphics.Color)	4289161340 (0xFFA7687C)
YUV	125.1170, -0.5507, 36.7314
Hunter-Lab	44.2395, 21.5346, 2.0811

Details

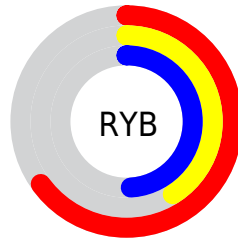
The Android color `4289161340` is a dark color, and the websafe version is hex `996666`. A complement of this color would be `4285048723`, and the grayscale version is `4286414205`.

A 20% lighter version of the original color is `4292844720`, and `4285609803` is the 20% darker color. If you saturate the color by 10%, you get `4289156977`, and if you desaturate by 10%, it is `4289165703`.

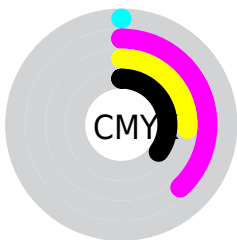
Distribution



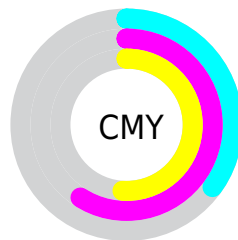
- Red (65%)
- Green (41%)
- Blue (49%)



- Red (65%)
- Yellow (41%)
- Blue (49%)



- Cyan (0%)
- Magenta (38%)
- Yellow (26%)
- Black (35%)



- Cyan (35%)
- Magenta (59%)
- Yellow (51%)

Brightness & Saturation Gradients

These gradients show how the Android color 4289161340 changes by changing the brightness by 10 percent. The first figure shows a shift by +10% for each color and the second figure -10%.

Similar to the brightness gradients but the following saturation gradients show a change of the Android color 4289161340 by changing the saturation by 10% instead.



4289161340



4289161340

4294967295



4287385443



4292844720



4285609803



4294817740



4283965493



4294956008



4282320928



4294963455



4280942599



4278190080



4289161340



4289161340



4289156977



4289165703



4289152869



4289169811

 4289148506

 4289174174

 4289144142

 4289178538

 4289139779

 4289182645

 4289135672

 4289187008

 4289134645

 4289191372

 4289195735

 4289199843

Harmonies

Analogous

The Analogous color harmony consists of three colors that are next to each other on the color wheel.



4288179347



4289161340



4289292900

Triad

The Triadic color harmony groups three colors that are evenly spaced from another and form a triangle on the color wheel.



4289161340



4285694032



4281369507

Complementary

The Complementary color scheme is a pair of colors which are on the opposite of each other on the color wheel.



4289161340



4285048723

Split Complementary

Split-complementary colors differ from the complementary color scheme. The scheme consists of three colors, the original color and two neighbors of the complement color.



4280256401



4289161340



4283860321

Square

The Square scheme is like the rectangle color scheme, but the four colors are evenly spaced on the color wheel.



4289161340



4287330634



4281829241



4283923882

Rectangle

The Rectangle color scheme consists of four colors that form a rectangle on the color wheel.



4289161340



4288900695



4281829241



4280714654

Sweetspot

The Sweet Spot groups the original color and five complimentary colors.



4289161340



4292461000



4287785127



4285423460



4293783021



4285427310

Same Dimension

The Same Dimension uses a secret algorithm to generate beautiful new colors.



4289161340



4292442006



4289163880



4283714638



4287889455



4279500806

Inverse Universe

The Inverse Universe completely reimagines the original color for something new.



4289161340



4292442006



4285045927



4283714638



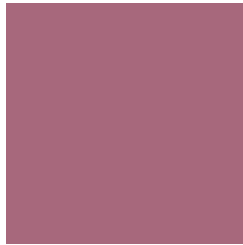
4287889455



4279500806

Previews

White Background



This preview shows how the Android color 4289161340 looks on a white background.

Color Contrast Check

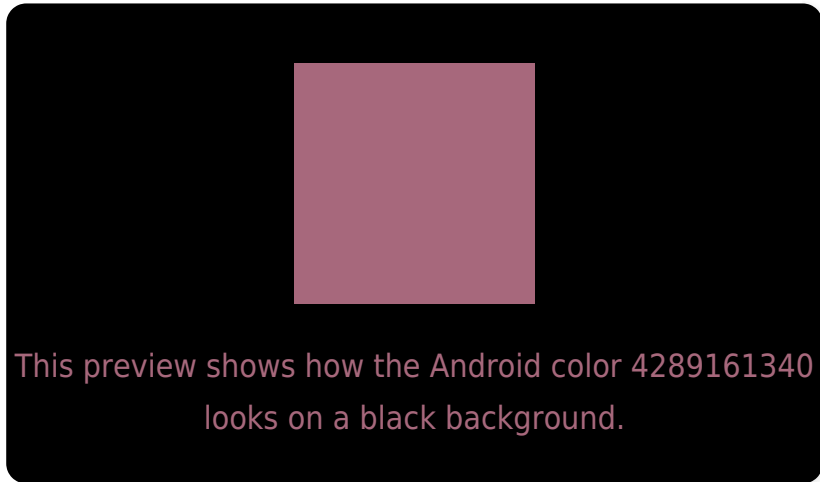
Large Text (above 18pt) WCAG AA ✓ Pass

Any Text WCAG AA ✗ Fail

Large Text (above 18pt) WCAG AAA ✗ Fail

Any Text WCAG AAA ✗ Fail

Black Background



Color Contrast Check

Large Text (above 18pt) WCAG AA ✓ Pass

Any Text WCAG AA ✓ Pass

Large Text (above 18pt) WCAG AAA ✓ Pass

Any Text WCAG AAA × Fail

If you want to check with other color combinations, try the [Color Contrast Checker](#).

Android 4289161340 Background



This preview shows how black text looks on a background with the Android color 4289161340.



This preview shows how white text looks on a background with the Android color 4289161340.

Color Blindness Simulation

Color vision deficiency is a very complex topic, and I could not describe the different causes any better than Wikipedia does, so if you want to learn more, you should check out their [article about color blindness](#).

Dichromacy



Original Color
4289161340

Protanopia
4286151303

Deuteranopia
4287068025

Trichromacy



Original Color
4289161340

Protanomaly
4287263619

Deuteranomaly
4287853178

Tritanomaly
4289096054

Monochromacy



Original Color
4289161340

Achromatopsia
4286414205

Achromatomaly
4287395197

CSS Examples

Text

The CSS property to change the color of the text to Android 4289161340 is called "color". The color property can be set on classes, ids or directly on the HTML element.

This example shows how text in the color `rgb(167, 104, 124)` looks like.

```
.text, #text, p{  
    color:rgb(167, 104, 124)  
}
```

If you want to add a text shadow in that color use the text-shadow property, you can generate a text shadow directly with our [CSS Text Shadow Generator](#).

Here you see how black text with a 4 pixel rgb(167, 104, 124) colored shadow looks like.

```
.shadow{ text-shadow: 4px 4px 2px rgb(167, 104, 124) }
```

Border

The CSS property to change the border of an element to Android 4289161340 is called "border". The border property can be set on classes, ids or directly on the HTML element.

This example shows the color as border, it can be applied via the CSS property "border" or "border-color".

```
.border, #border, table{ border:4px solid rgb(167, 104, 124) }
```

If only the border color should be changed use the property `border-color`.

```
.border{ border-color:rgb(167, 104, 124) }
```

If you want to add a box shadow in that color use:

Here you see how a box with a 4 pixel `rgb(167, 104, 124)` colored shadow looks like.

```
.boxshadow{ -moz-box-shadow:4px 4px 4px  
4px rgb(167, 104, 124); -webkit-box-  
shadow:4px 4px 4px 4px rgb(167, 104, 124);  
box-shadow:4px 4px 4px 4px rgb(167, 104,  
124) }
```

Background

The CSS property to change the background color of an element to Android 4289161340 is called "background". The background property can be set on classes, ids or directly on the HTML element.

```
.background, #background, body{  
background: rgb(167, 104, 124) }
```

If only the background color should be changed can be used:

```
.background{ background-color: rgb(167,  
104, 124) }
```

This example shows the color as background, it is applied via the CSS property "background".

To optimize and compress your CSS code, you can use our [online CSS compressor and optimizer](#) based on csstidy. If you want to create a linear or radial gradient as background or border, check our [CSS Gradient Generator](#).

Hey! You found this booklet interesting? Support Converting Colors with the new Membership Option!

The pro membership hides all ads, plus gives you double the colors in the color bucket, and more awesome pro features!

[Learn more, Memberships starting at \\$2.50/m!](#)

**Follow me
on Twitter!**

@ConvertingColor