

Converting Colors

Android(4289165905)

Have a look what the booklet for
Android(4289165905) contains.

Android(4289165905)	3
<i>Conversions</i>	4
<i>Details</i>	6
<i>Harmonies</i>	11
<i>Previews</i>	23
<i>Color Blindness Simulation</i>	26
<i>CSS Examples</i>	29

Color

Android(4289165905)

Conversions

Conversions Part 1

Format	Color
Hex	A77A51
RGB	167, 122, 81
RGB Percent	65%, 48%, 32%
CMY	0.3451, 0.5216, 0.6824
CMYK	0.00, 0.27, 0.51, 0.35
HSL	29°, 35%, 49%
HSV	29°, 51%, 65%
XYZ	24.3811, 22.7286, 10.8866
YIQ	130.7810, 39.9810, -3.2110

Conversions

Conversions Part 2

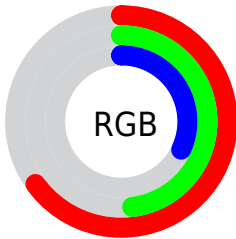
Format	Color
RYB	167, 159, 81
Decimal	10975825
CIELab	54.79, 12.56, 29.23
CIELCh	55, 31.811, 66.751
Yxy	22.7286, 0.4204, 0.3919
Android (android.graphics.Color)	4289165905 (0xFFA77A51)
YUV	130.7810, -24.5420, 31.7641
Hunter-Lab	47.6746, 7.8556, 19.8331

Details

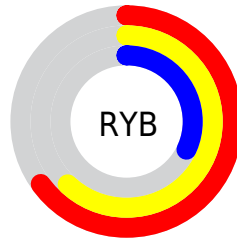
The Android color `4289165905` is a dark color, and the websafe version is hex `996633`. A complement of this color would be `4283530919`, and the grayscale version is `4286808963`.

A 20% lighter version of the original color is `4292914819`, and `4285548835` is the 20% darker color. If you saturate the color by 10%, you get `4289163584`, and if you desaturate by 10%, it is `4289168226`.

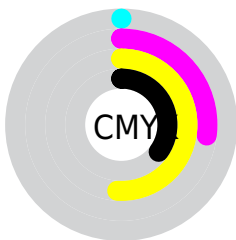
Distribution



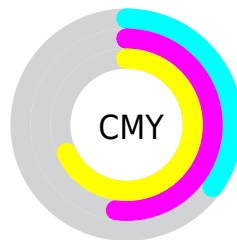
- Red (65%)
- Green (48%)
- Blue (32%)



- Red (65%)
- Yellow (62%)
- Blue (32%)



- Cyan (0%)
- Magenta (27%)
- Yellow (51%)
- Black (35%)



- Cyan (35%)
- Magenta (52%)
- Yellow (68%)

Brightness & Saturation Gradients

These gradients show how the Android color 4289165905 changes by changing the brightness by 10 percent. The first figure shows a shift by +10% for each color and the second figure -10%.

Similar to the brightness gradients but the following saturation gradients show a change of the Android color 4289165905 by changing the saturation by 10% instead.



4289165905



4289165905

4294967295



4287324473



4292914819



4285548835



4294888093



4283839245



4294960824



4282195200



4294967252



4280616704



4294967281



4278190080



4289165905



4289165905



4289163584



4289168226



4289161520



4289170290

■ 4289159199

■ 4289172611

■ 4289156878

■ 4289174932

■ 4289155072

■ 4289177252

■ 4289179317

■ 4289181638

■ 4289183959

■ 4289186279

Harmonies

Analogous

The Analogous color harmony consists of three colors that are next to each other on the color wheel.



4290146660



4289165905



4287595340

Triad

The Triadic color harmony groups three colors that are evenly spaced from another and form a triangle on the color wheel.



4289165905



4280783497



4287527599

Complementary

The Complementary color scheme is a pair of colors which are on the opposite of each other on the color wheel.



4289165905



4283530919

Split Complementary

Split-complementary colors differ from the complementary color scheme. The scheme consists of three colors, the original color and two neighbors of the complement color.



4284843193



4289165905



4278227363

Square

The Square scheme is like the rectangle color scheme, but the four colors are evenly spaced on the color wheel.



4289165905



4283404396



4281568437



4289425817

Rectangle

The Rectangle color scheme consists of four colors that form a rectangle on the color wheel.



4289165905



4286351697



4281568437



4286741940

Sweetspot

The Sweet Spot groups the original color and five complimentary colors.



4289165905



4292462776



4289155455



4285424474



4293783021



4285427310

Same Dimension

The Same Dimension uses a secret algorithm to generate beautiful new colors.



4289165905



4292448850



4289176657



4283715660



4287907584



4279503360

Inverse Universe

The Inverse Universe completely reimagines the original color for something new.



4283530919



4283603417



4283520167



4283191380



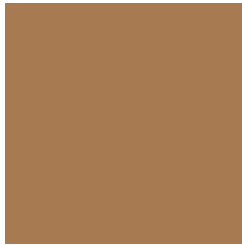
4278209940



4278192916

Previews

White Background



This preview shows how the Android color 4289165905 looks on a white background.

Color Contrast Check

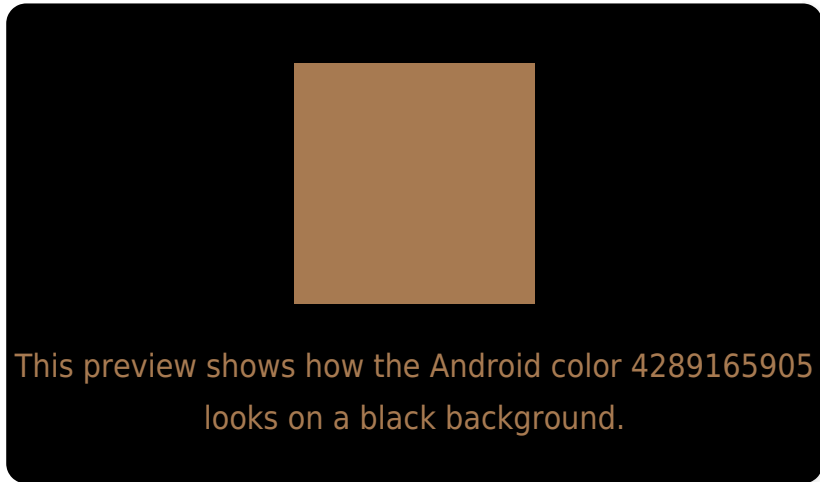
Large Text (above 18pt) WCAG AA ✓ Pass

Any Text WCAG AA ✗ Fail

Large Text (above 18pt) WCAG AAA ✗ Fail

Any Text WCAG AAA ✗ Fail

Black Background



Color Contrast Check

Large Text (above 18pt) WCAG AA ✓ Pass

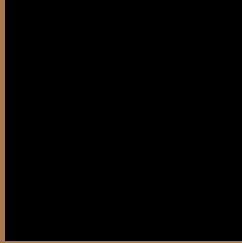
Any Text WCAG AA ✓ Pass

Large Text (above 18pt) WCAG AAA ✓ Pass

Any Text WCAG AAA × Fail

If you want to check with other color combinations, try the [Color Contrast Checker](#).

Android 4289165905 Background



This preview shows how black text looks on a background with the Android color 4289165905.



This preview shows how white text looks on a background with the Android color 4289165905.

Color Blindness Simulation

Color vision deficiency is a very complex topic, and I could not describe the different causes any better than Wikipedia does, so if you want to learn more, you should check out their [article about color blindness](#).


Dichromacy



Original Color
4289165905

Protanopia
4287595349

Deuteranopia
4288642384



Tritanopia
4289426557

Trichromacy



Original Color
4289165905

Protanomaly
4288184404

Deuteranomaly
4288838736

Tritanomaly
4289361517

Monochromacy



Original Color
4289165905

Achromatopsia
4286808963

Achromatomaly
4287660145

CSS Examples

Text

The CSS property to change the color of the text to Android 4289165905 is called "color". The color property can be set on classes, ids or directly on the HTML element.

This example shows how text in the color `rgb(167, 122, 81)` looks like.

```
.text, #text, p{  
    color:rgb(167, 122, 81)  
}
```

If you want to add a text shadow in that color use the text-shadow property, you can generate a text shadow directly with our [CSS Text Shadow Generator](#).

Here you see how black text with a 4 pixel rgb(167, 122, 81) colored shadow looks like.

```
.shadow{ text-shadow: 4px 4px 2px rgb(167, 122, 81) }
```

Border

The CSS property to change the border of an element to Android 4289165905 is called "border". The border property can be set on classes, ids or directly on the HTML element.

This example shows the color as border, it can be applied via the CSS property "border" or "border-color".

```
.border, #border, table{ border:4px solid rgb(167, 122, 81) }
```

If only the border color should be changed use the property border-color.

```
.border{ border-color:rgb(167, 122, 81) }
```

If you want to add a box shadow in that color use:

Here you see how a box with a 4 pixel rgb(167, 122, 81) colored shadow looks like.

```
.boxshadow{ -moz-box-shadow:4px 4px 4px  
4px rgb(167, 122, 81); -webkit-box-  
shadow:4px 4px 4px 4px rgb(167, 122, 81);  
box-shadow:4px 4px 4px 4px rgb(167, 122,  
81) }
```

Background

The CSS property to change the background color of an element to Android 4289165905 is called "background". The background property can be set on classes, ids or directly on the HTML element.

```
.background, #background, body{  
background: rgb(167, 122, 81) }
```

If only the background color should be changed can be used:

```
.background{ background-color: rgb(167,  
122, 81) }
```

This example shows the color as background, it is applied via the CSS property "background".

To optimize and compress your CSS code, you can use our [online CSS compressor and optimizer](#) based on csstidy. If you want to create a linear or radial gradient as background or border, check our [CSS Gradient Generator](#).

Hey! You found this booklet interesting? Support Converting Colors with the new Membership Option!

The pro membership hides all ads, plus gives you double the colors in the color bucket, and more awesome pro features!

[Learn more, Memberships starting at \\$2.50/m!](#)

**Follow me
on Twitter!**

@ConvertingColor