

Converting Colors

Android(4289167204)

Have a look what the booklet for
Android(4289167204) contains.

Android(4289167204)	3
<i>Conversions</i>	4
<i>Details</i>	6
<i>Harmonies</i>	11
<i>Previews</i>	23
<i>Color Blindness Simulation</i>	26
<i>CSS Examples</i>	29

Color

Android(4289167204)

Conversions

Conversions Part 1

Format	Color
Hex	A77F64
RGB	167, 127, 100
RGB Percent	65%, 50%, 39%
CMY	0.3451, 0.5020, 0.6078
CMYK	0.00, 0.24, 0.40, 0.35
HSL	24°, 28%, 52%
HSV	24°, 40%, 65%
XYZ	25.8260, 24.3143, 15.3886
YIQ	135.8820, 32.5070, 0.0830

Conversions

Conversions Part 2

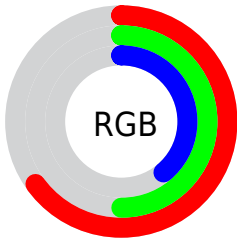
Format	Color
RYB	167, 145, 100
Decimal	10977124
CIELab	56.40, 11.78, 20.65
CIElCh	56, 23.773, 60.309
Yxy	24.3143, 0.3941, 0.3710
Android (android.graphics.Color)	4289167204 (0xFFA77F64)
YUV	135.8820, -17.6898, 27.2905
Hunter-Lab	49.3096, 7.1979, 16.0134

Details

The Android color `4289167204` is a dark color, and the websafe version is hex `996666`. A complement of this color would be `4284779687`, and the grayscale version is `4287137928`.

A 20% lighter version of the original color is `4292850839`, and `4285615669` is the 20% darker color. If you saturate the color by 10%, you get `4289164627`, and if you desaturate by 10%, it is `4289169781`.

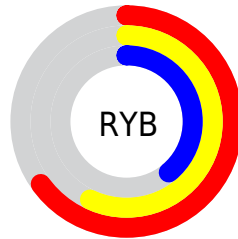
Distribution



Red (65%)

Green (50%)

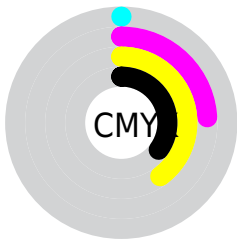
Blue (39%)



Red (65%)

Yellow (57%)

Blue (39%)

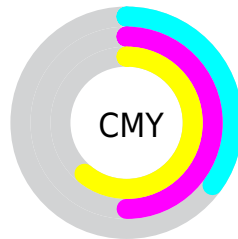


Cyan (0%)

Magenta (24%)

Yellow (40%)

Black (35%)



Cyan (35%)

Magenta (50%)

Yellow (61%)

Brightness & Saturation Gradients

These gradients show how the Android color 4289167204 changes by changing the brightness by 10 percent. The first figure shows a shift by +10% for each color and the second figure -10%.

Similar to the brightness gradients but the following saturation gradients show a change of the Android color 4289167204 by changing the saturation by 10% instead.



4289167204



4289167204

4294967295



4287391308



4292850839



4285615669



4294823858



4283971359



4294962381



4282327305



4294967274



4280749312



4278190080



4289167204



4289167204



4289164627



4289169781



4289162051



4289172357

 4289159474

 4289174934

 4289156897

 4289177511

 4289154321

 4289180087

 4289151744

 4289182664

 4289185241

 4289187818

 4289190394

Harmonies

Analogous

The Analogous color harmony consists of three colors that are next to each other on the color wheel.



4289755763



4289167204



4288054878

Triad

The Triadic color harmony groups three colors that are evenly spaced from another and form a triangle on the color wheel.



4289167204



4283601799



4287333035

Complementary

The Complementary color scheme is a pair of colors which are on the opposite of each other on the color wheel.



4289167204



4284779687

Split Complementary

Split-complementary colors differ from the complementary color scheme. The scheme consists of three colors, the original color and two neighbors of the complement color.



4285368752



4289167204



4282880667

Square

The Square scheme is like the rectangle color scheme, but the four colors are evenly spaced on the color wheel.



4289167204



4285043058



4283600811



4288838556

Rectangle

The Rectangle color scheme consists of four colors that form a rectangle on the color wheel.



4289167204



4287072864



4283600811



4286678190

Sweetspot

The Sweet Spot groups the original color and five complimentary colors.



4289167204



4292463039



4289160332



4285424734



4293783021



4285427310

Same Dimension

The Same Dimension uses a secret algorithm to generate beautiful new colors.



4289167204



4292451185



4289175652



4283715404



4287904768



4279502848

Inverse Universe

The Inverse Universe completely reimagines the original color for something new.



4284779687



4285640665



4284771239



4283191636



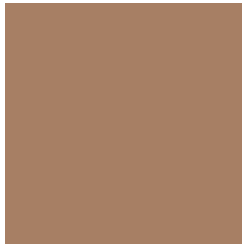
4278212756



4278193172

Previews

White Background



This preview shows how the Android color 4289167204 looks on a white background.

Color Contrast Check

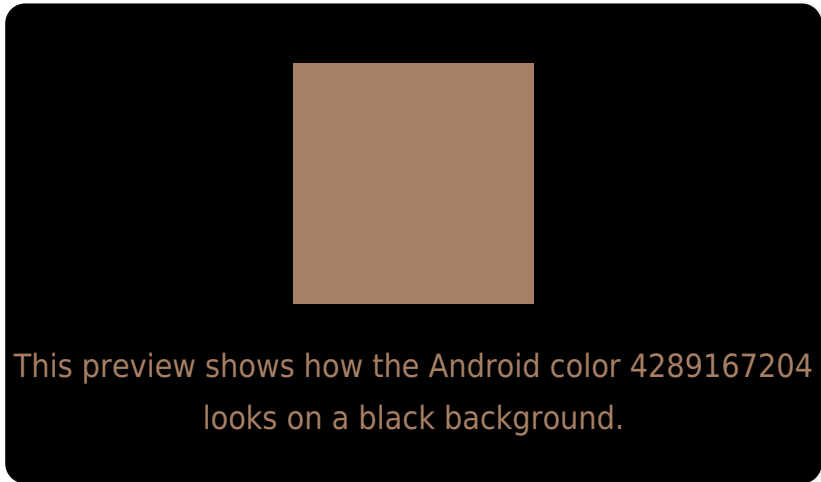
Large Text (above 18pt) WCAG AA ✓ Pass

Any Text WCAG AA ✗ Fail

Large Text (above 18pt) WCAG AAA ✗ Fail

Any Text WCAG AAA ✗ Fail

Black Background



Color Contrast Check

Large Text (above 18pt) WCAG AA ✓ Pass

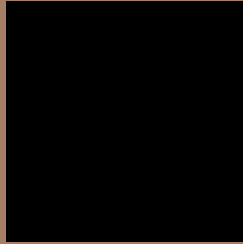
Any Text WCAG AA ✓ Pass

Large Text (above 18pt) WCAG AAA ✓ Pass

Any Text WCAG AAA × Fail

If you want to check with other color combinations, try the [Color Contrast Checker](#).

Android 4289167204 Background



This preview shows how black text looks on a background with the Android color 4289167204.



This preview shows how white text looks on a background with the Android color 4289167204.

Color Blindness Simulation

Color vision deficiency is a very complex topic, and I could not describe the different causes any better than Wikipedia does, so if you want to learn more, you should check out their [article about color blindness](#).

Dichromacy



Original Color
4289167204

Protanopia
4287727464

Deuteranopia
4288709219

Trichromacy



Original Color
4289167204

Protanomaly
4288250983

Deuteranomaly
4288905571

Tritanomaly
4289297528

Monochromacy



Original Color
4289167204

Achromatopsia
4287137928

Achromatomaly
4287858043

CSS Examples

Text

The CSS property to change the color of the text to Android 4289167204 is called "color". The color property can be set on classes, ids or directly on the HTML element.

This example shows how text in the color `rgb(167, 127, 100)` looks like.

```
.text, #text, p{  
    color:rgb(167, 127, 100)  
}
```

If you want to add a text shadow in that color use the text-shadow property, you can generate a text shadow directly with our [CSS Text Shadow Generator](#).

Here you see how black text with a 4 pixel rgb(167, 127, 100) colored shadow looks like.

```
.shadow{ text-shadow: 4px 4px 2px rgb(167, 127, 100) }
```

Border

The CSS property to change the border of an element to Android 4289167204 is called "border". The border property can be set on classes, ids or directly on the HTML element.

This example shows the color as border, it can be applied via the CSS property "border" or "border-color".

```
.border, #border, table{ border:4px solid rgb(167, 127, 100) }
```

If only the border color should be changed use the property `border-color`.

```
.border{ border-color:rgb(167, 127, 100) }
```

If you want to add a box shadow in that color use:

Here you see how a box with a 4 pixel `rgb(167, 127, 100)` colored shadow looks like.

```
.boxshadow{ -moz-box-shadow:4px 4px 4px  
4px rgb(167, 127, 100); -webkit-box-  
shadow:4px 4px 4px 4px rgb(167, 127, 100);  
box-shadow:4px 4px 4px 4px rgb(167, 127,  
100) }
```

Background

The CSS property to change the background color of an element to Android 4289167204 is called "background". The background property can be set on classes, ids or directly on the HTML element.

```
.background, #background, body{  
background: rgb(167, 127, 100) }
```

If only the background color should be changed can be used:

```
.background{ background-color: rgb(167,  
127, 100) }
```

This example shows the color as background, it is applied via the CSS property "background".

To optimize and compress your CSS code, you can use our [online CSS compressor and optimizer](#) based on csstidy. If you want to create a linear or radial gradient as background or border, check our [CSS Gradient Generator](#).

Hey! You found this booklet interesting? Support Converting Colors with the new Membership Option!

The pro membership hides all ads, plus gives you double the colors in the color bucket, and more awesome pro features!

[Learn more, Memberships starting at \\$2.50/m!](#)

**Follow me
on Twitter!**

@ConvertingColor