

# Converting Colors

Android(4289226852)

Have a look what the booklet for  
Android(4289226852) contains.

<b>Android(4289226852)</b> .....	3
<b><i>Conversions</i></b> .....	4
<b><i>Details</i></b> .....	6
<b><i>Harmonies</i></b> .....	11
<b><i>Previews</i></b> .....	23
<b><i>Color Blindness Simulation</i></b> .....	26
<b><i>CSS Examples</i></b> .....	29

# Color

**Android(4289226852)**

# Conversions

## Conversions Part 1

<b>Format</b>	<b>Color</b>
Hex	A86864
RGB	168, 104, 100
RGB Percent	66%, 41%, 39%
CMY	0.3412, 0.5922, 0.6078
CMYK	0.00, 0.38, 0.40, 0.34
HSL	4°, 28%, 53%
HSV	4°, 40%, 66%
XYZ	23.3990, 19.1456, 14.5188
YIQ	122.6800, 39.4280, 12.3240

# Conversions

## Conversions Part 2

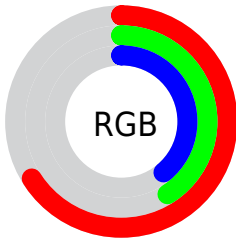
<b>Format</b>	<b>Color</b>
<b>R<sub>YB</sub></b>	168, 104, 100
Decimal	11036772
CIE Lab	50.86, 25.19, 13.09
CIE LCh	51, 28.392, 27.463
Yxy	19.1456, 0.4101, 0.3355
Android (android.graphics.Color)	4289226852 (0xFFA86864)
YUV	122.6800, -11.1812, 39.7456
Hunter-Lab	43.7556, 18.8833, 10.9556

# Details

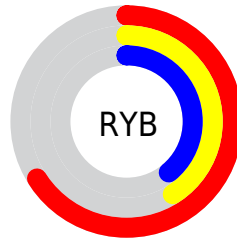
The Android color `4289226852` is a dark color, and the websafe version is hex `996666`. A complement of this color would be `4284785832`, and the grayscale version is `4286282619`.

A 20% lighter version of the original color is `4292975767`, and `4285610037` is the 20% darker color. If you saturate the color by 10%, you get `4289222739`, and if you desaturate by 10%, it is `4289230965`.

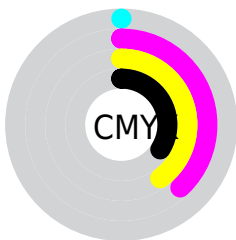
# Distribution



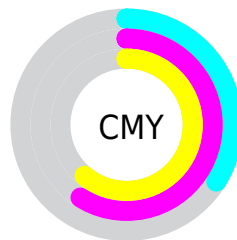
- Red (66%)
- Green (41%)
- Blue (39%)



- Red (66%)
- Yellow (41%)
- Blue (39%)



- Cyan (0%)
- Magenta (38%)
- Yellow (40%)
- Black (34%)



- Cyan (34%)
- Magenta (59%)
- Yellow (61%)

# Brightness & Saturation Gradients

These gradients show how the Android color 4289226852 changes by changing the brightness by 10 percent. The first figure shows a shift by +10% for each color and the second figure -10%.

Similar to the brightness gradients but the following saturation gradients show a change of the Android color 4289226852 by changing the saturation by 10% instead.





4289226852



4289226852

4294967295



4287385420



4292975767



4285610037



4294883249



4283900192



4294955981



4282255625



4294963177



4280811521



4278190080



4289226852



4289226852



4289222739



4289230965



4289218626



4289235078

 4289214770

 4289238934

 4289210657

 4289243047

 4289206544

 4289247160

 4289202688

 4289251273

 4289255386

 4289259242

 4289263355

# Harmonies

## Analogous

The Analogous color harmony consists of three colors that are next to each other on the color wheel.



4289095548



4289226852



4288573265

# Triad

The Triadic color harmony groups three colors that are evenly spaced from another and form a triangle on the color wheel.



4289226852



4283860062



4283661481

# Complementary

The Complementary color scheme is a pair of colors which are on the opposite of each other on the color wheel.



4289226852



4284785832

# Split Complementary

Split-complementary colors differ from the complementary color scheme. The scheme consists of three colors, the original color and two neighbors of the complement color.



4280976033



4289226852



4281763446

# Square

The Square scheme is like the rectangle color scheme, but the four colors are evenly spaced on the color wheel.



4289226852



4285693517



4279928463



4286149796

# Rectangle

The Rectangle color scheme consists of four colors that form a rectangle on the color wheel.



4289226852



4287788106



4279928463



4282744488



# Sweetspot

The Sweet Spot groups the original color and five complimentary colors.



4289226852



4292592577



4289225893



4285423454



4293783021



4285427310



# Same Dimension

The Same Dimension uses a secret algorithm to generate beautiful new colors.



4289226852



4292572784



4289235300



4283714636



4287891712



4279501056



# Inverse Universe

The Inverse Universe completely reimagines the original color for something new.



4284785832



4285584859



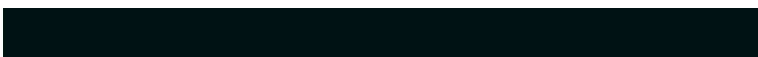
4284777384



4283192404



4278225812

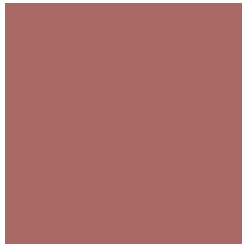


4278194964



# Previews

## White Background



This preview shows how the Android color 4289226852 looks on a white background.

## Color Contrast Check

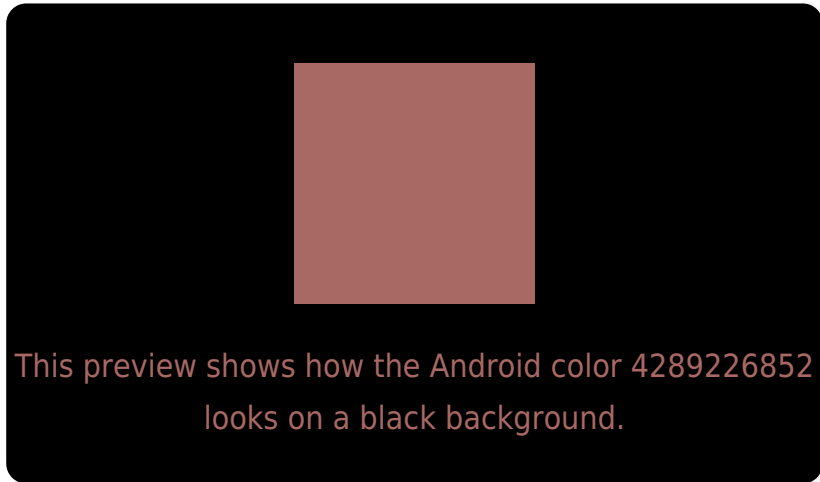
Large Text (above 18pt) WCAG AA ✓ Pass

Any Text WCAG AA ✗ Fail

Large Text (above 18pt) WCAG AAA ✗ Fail

Any Text WCAG AAA ✗ Fail

# Black Background



## Color Contrast Check

Large Text (above 18pt) WCAG AA ✓ Pass

Any Text WCAG AA ✓ Pass

Large Text (above 18pt) WCAG AAA ✓ Pass

Any Text WCAG AAA × Fail

If you want to check with other color combinations, try the [Color Contrast Checker](#).



# Android 4289226852 Background



This preview shows how black text looks on a background with the Android color 4289226852.

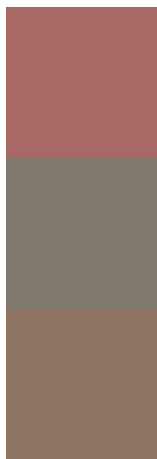


This preview shows how white text looks on a background with the Android color 4289226852.

# Color Blindness Simulation

Color vision deficiency is a very complex topic, and I could not describe the different causes any better than Wikipedia does, so if you want to learn more, you should check out their [article about color blindness](#).

## Dichromacy



**Original Color**

4289226852

**Protanopia**

4286544237

**Deuteranopia**

4287460706



# Trichromacy



**Original Color**  
4289226852

**Protanomaly**  
4287525738

**Deuteranomaly**  
4288114787

**Tritanomaly**  
4289292138

# Monochromacy



**Original Color**  
4289226852

**Achromatopsia**  
4286282619

**Achromatomaly**  
4287329395

# CSS Examples

## Text

The CSS property to change the color of the text to Android 4289226852 is called "color". The color property can be set on classes, ids or directly on the HTML element.

This example shows how text in the color `rgb(168, 104, 100)` looks like.

```
.text, #text, p{  
    color:rgb(168, 104, 100)  
}
```

If you want to add a text shadow in that color use the text-shadow property, you can generate a text shadow directly with our [CSS Text Shadow Generator](#).

Here you see how black text with a 4 pixel rgb(168, 104, 100) colored shadow looks like.

```
.shadow{ text-shadow: 4px 4px 2px rgb(168, 104, 100) }
```

## Border

The CSS property to change the border of an element to Android 4289226852 is called "border". The border property can be set on classes, ids or directly on the HTML element.

This example shows the color as border, it can be applied via the CSS property "border" or "border-color".

```
.border, #border, table{ border:4px solid rgb(168, 104, 100) }
```

If only the border color should be changed use the property `border-color`.

```
.border{ border-color:rgb(168, 104, 100) }
```

If you want to add a box shadow in that color use:

Here you see how a box with a 4 pixel `rgb(168, 104, 100)` colored shadow looks like.

```
.boxshadow{ -moz-box-shadow:4px 4px 4px  
4px rgb(168, 104, 100); -webkit-box-  
shadow:4px 4px 4px 4px rgb(168, 104, 100);  
box-shadow:4px 4px 4px 4px rgb(168, 104,  
100) }
```

# Background

The CSS property to change the background color of an element to Android 4289226852 is called "background". The background property can be set on classes, ids or directly on the HTML element.

```
.background, #background, body{  
background: rgb(168, 104, 100) }
```

If only the background color should be changed can be used:

```
.background{ background-color: rgb(168,  
104, 100) }
```

This example shows the color as background, it is applied via the CSS property "background".

To optimize and compress your CSS code, you can use our [online CSS compressor and optimizer](#) based on csstidy. If you want to create a linear or radial gradient as background or border, check our [CSS Gradient Generator](#).



Hey! You found this booklet interesting? Support Converting Colors with the new Membership Option!

The pro membership hides all ads, plus gives you double the colors in the color bucket, and more awesome pro features!

**[Learn more, Memberships starting at \\$2.50/m!](#)**

**Follow me  
on Twitter!**

@ConvertingColor