

Converting Colors

Android(4289233245)

Have a look what the booklet for
Android(4289233245) contains.

Android(4289233245)	3
<i>Conversions</i>	4
<i>Details</i>	6
<i>Harmonies</i>	11
<i>Previews</i>	23
<i>Color Blindness Simulation</i>	26
<i>CSS Examples</i>	29

Color

Android(4289233245)

Conversions

Conversions Part 1

Format	Color
Hex	A8815D
RGB	168, 129, 93
RGB Percent	66%, 51%, 36%
CMY	0.3412, 0.4941, 0.6353
CMYK	0.00, 0.23, 0.45, 0.34
HSL	29°, 30%, 51%
HSV	29°, 45%, 66%
XYZ	25.9745, 24.8157, 13.7768
YIQ	136.5570, 34.8000, -2.9280

Conversions

Conversions Part 2

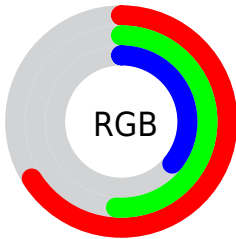
Format	Color
R_{YB}	168, 162, 93
Decimal	11043165
CIE _{Lab}	56.90, 10.26, 25.28
CIE _{LCh}	57, 27.280, 67.898
Yxy	24.8157, 0.4023, 0.3843
Android (android.graphics.Color)	4289233245 (0xFFA8815D)
YUV	136.5570, -21.4736, 27.5755
Hunter-Lab	49.8153, 5.8959, 18.4736

Details

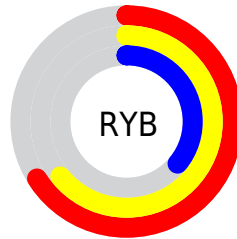
The Android color `4289233245` is a dark color, and the websafe version is hex `CC9966`. A complement of this color would be `4284318888`, and the grayscale version is `4287203721`.

A 20% lighter version of the original color is `4292982416`, and `4285681710` is the 20% darker color. If you saturate the color by 10%, you get `4289230924`, and if you desaturate by 10%, it is `4289235566`.

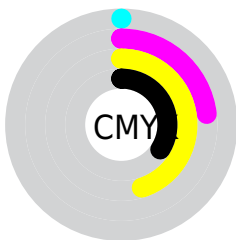
Distribution



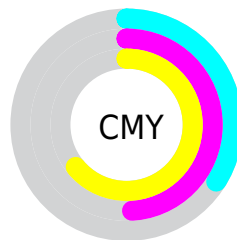
- Red (66%)
- Green (51%)
- Blue (36%)



- Red (66%)
- Yellow (64%)
- Blue (36%)



- Cyan (0%)
- Magenta (23%)
- Yellow (45%)
- Black (34%)



- Cyan (34%)
- Magenta (49%)
- Yellow (64%)

Brightness & Saturation Gradients

These gradients show how the Android color 4289233245 changes by changing the brightness by 10 percent. The first figure shows a shift by +10% for each color and the second figure -10%.

Similar to the brightness gradients but the following saturation gradients show a change of the Android color 4289233245 by changing the saturation by 10% instead.



4289233245



4289233245

4294967295



4287457349



4292982416



4285681710



4294889898



4283971865



4294962886



4282327808



4294967266



4280749824



4278190080



4289233245



4289233245



4289230924



4289235566



4289228859



4289237631

 4289226539

 4289239951

 4289224218

 4289242272

 4289221897

 4289244593

 4289220864

 4289246658

 4289248979

 4289251299

 4289253620

Harmonies

Analogous

The Analogous color harmony consists of three colors that are next to each other on the color wheel.



4290083436



4289233245



4287859033

Triad

The Triadic color harmony groups three colors that are evenly spaced from another and form a triangle on the color wheel.



4289233245



4282553998



4287922350

Complementary

The Complementary color scheme is a pair of colors which are on the opposite of each other on the color wheel.



4289233245



4284318888

Split Complementary

Split-complementary colors differ from the complementary color scheme. The scheme consists of three colors, the original color and two neighbors of the complement color.



4285696439



4289233245



4281898149

Square

The Square scheme is like the rectangle color scheme, but the four colors are evenly spaced on the color wheel.



4289233245



4284322934



4283338932



4289493403

Rectangle

The Rectangle color scheme consists of four colors that form a rectangle on the color wheel.



4289233245



4286746206



4283338932



4287202226

Sweetspot

The Sweet Spot groups the original color and five complimentary colors.



4289233245



4292594879



4289224069



4285424988



4293783021



4285427310

Same Dimension

The Same Dimension uses a secret algorithm to generate beautiful new colors.



4289233245



4292583013



4289242461



4283715660



4287907584



4279503360

Inverse Universe

The Inverse Universe completely reimagines the original color for something new.



4284318888



4284850907



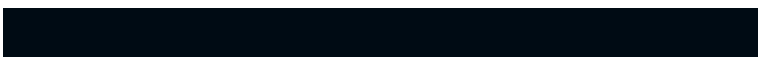
4284309416



4283191380



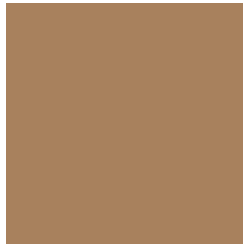
4278209940



4278192916

Previews

White Background



This preview shows how the Android color 4289233245 looks on a white background.

Color Contrast Check

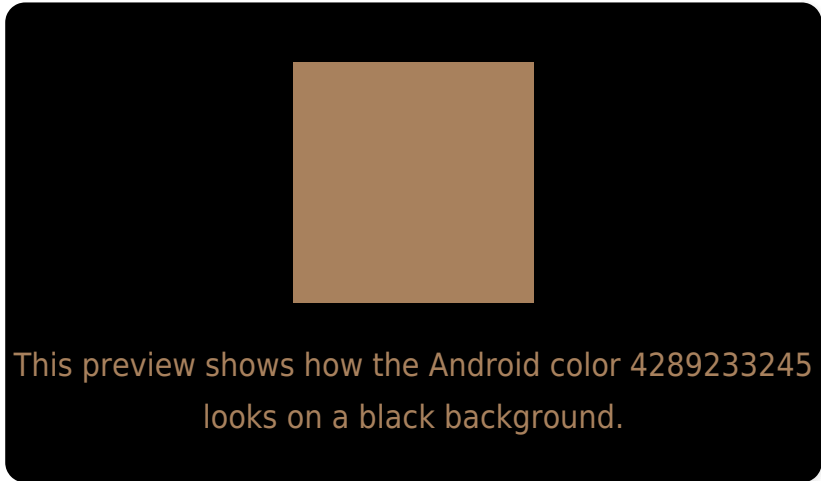
Large Text (above 18pt) WCAG AA ✓ Pass

Any Text WCAG AA ✗ Fail

Large Text (above 18pt) WCAG AAA ✗ Fail

Any Text WCAG AAA ✗ Fail

Black Background



Color Contrast Check

Large Text (above 18pt) WCAG AA ✓ Pass

Any Text WCAG AA ✓ Pass

Large Text (above 18pt) WCAG AAA ✓ Pass

Any Text WCAG AAA × Fail

If you want to check with other color combinations, try the [Color Contrast Checker](#).

Android 4289233245 Background



This preview shows how black text looks on a background with the Android color 4289233245.



This preview shows how white text looks on a background with the Android color 4289233245.

Color Blindness Simulation

Color vision deficiency is a very complex topic, and I could not describe the different causes any better than Wikipedia does, so if you want to learn more, you should check out their [article about color blindness](#).

Dichromacy



Original Color

4289233245

Protanopia

4287924576

Deuteranopia

4288971613



Tritanopia
4289494149

Trichromacy



Original Color
4289233245

Protanomaly
4288382559

Deuteranomaly
4289036893

Tritanomaly
4289429110

Monochromacy



Original Color
4289233245

Achromatopsia
4287203721

Achromatomaly
4287923833

CSS Examples

Text

The CSS property to change the color of the text to Android 4289233245 is called "color". The color property can be set on classes, ids or directly on the HTML element.

This example shows how text in the color `rgb(168, 129, 93)` looks like.

```
.text, #text, p{  
    color:rgb(168, 129, 93)  
}
```

If you want to add a text shadow in that color use the text-shadow property, you can generate a text shadow directly with our [CSS Text Shadow Generator](#).

Here you see how black text with a 4 pixel rgb(168, 129, 93) colored shadow looks like.

```
.shadow{ text-shadow: 4px 4px 2px rgb(168, 129, 93) }
```

Border

The CSS property to change the border of an element to Android 4289233245 is called "border". The border property can be set on classes, ids or directly on the HTML element.

This example shows the color as border, it can be applied via the CSS property "border" or "border-color".

```
.border, #border, table{ border:4px solid rgb(168, 129, 93) }
```

If only the border color should be changed use the property `border-color`.

```
.border{ border-color:rgb(168, 129, 93) }
```

If you want to add a box shadow in that color use:

Here you see how a box with a 4 pixel `rgb(168, 129, 93)` colored shadow looks like.

```
.boxshadow{ -moz-box-shadow:4px 4px 4px  
4px rgb(168, 129, 93); -webkit-box-  
shadow:4px 4px 4px 4px rgb(168, 129, 93);  
box-shadow:4px 4px 4px 4px rgb(168, 129,  
93) }
```

Background

The CSS property to change the background color of an element to Android 4289233245 is called "background". The background property can be set on classes, ids or directly on the HTML element.

```
.background, #background, body{  
background: rgb(168, 129, 93) }
```

If only the background color should be changed can be used:

```
.background{ background-color: rgb(168,  
129, 93) }
```

This example shows the color as background, it is applied via the CSS property "background".

To optimize and compress your CSS code, you can use our [online CSS compressor and optimizer](#) based on csstidy. If you want to create a linear or radial gradient as background or border, check our [CSS Gradient Generator](#).

Hey! You found this booklet interesting? Support Converting Colors with the new Membership Option!

The pro membership hides all ads, plus gives you double the colors in the color bucket, and more awesome pro features!

[Learn more, Memberships starting at \\$2.50/m!](#)

**Follow me
on Twitter!**

@ConvertingColor