

Converting Colors

Android(4289235566)

Have a look what the booklet for
Android(4289235566) contains.

Android(4289235566)	3
<i>Conversions</i>	4
<i>Details</i>	6
<i>Harmonies</i>	11
<i>Previews</i>	23
<i>Color Blindness Simulation</i>	26
<i>CSS Examples</i>	29

Color

Android(4289235566)

Conversions

Conversions Part 1

Format	Color
Hex	A88A6E
RGB	168, 138, 110
RGB Percent	66%, 54%, 43%
CMY	0.3412, 0.4588, 0.5686
CMYK	0.00, 0.18, 0.35, 0.34
HSL	29°, 25%, 55%
HSV	29°, 35%, 66%
XYZ	28.0514, 27.6276, 18.6060
YIQ	143.7780, 26.8680, -2.3480

Conversions

Conversions Part 2

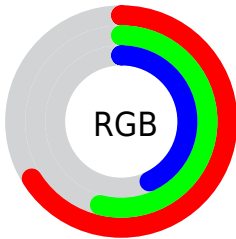
Format	Color
RYB	168, 164, 110
Decimal	11045486
CIELab	59.55, 7.25, 19.28
CIELCh	60, 20.593, 69.398
Yxy	27.6276, 0.3776, 0.3719
Android (android.graphics.Color)	4289235566 (0xFFA88A6E)
YUV	143.7780, -16.6526, 21.2427
Hunter-Lab	52.5619, 3.2790, 15.8057

Details

The Android color `4289235566` is a dark color, and the websafe version is hex `999966`. A complement of this color would be `4285435048`, and the grayscale version is `4287664272`.

A 20% lighter version of the original color is `4292919202`, and `4285749310` is the 20% darker color. If you saturate the color by 10%, you get `4289233245`, and if you desaturate by 10%, it is `4289237887`.

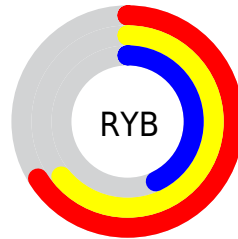
Distribution



Red (66%)

Green (54%)

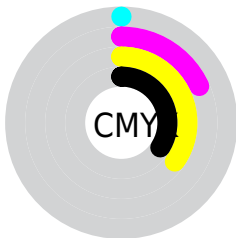
Blue (43%)



Red (66%)

Yellow (64%)

Blue (43%)

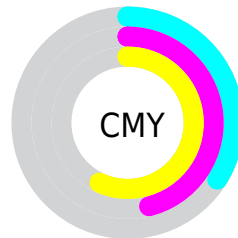


Cyan (0%)

Magenta (18%)

Yellow (35%)

Black (34%)



Cyan (34%)

Magenta (46%)

Yellow (57%)

Brightness & Saturation Gradients

These gradients show how the Android color 4289235566 changes by changing the brightness by 10 percent. The first figure shows a shift by +10% for each color and the second figure -10%.

Similar to the brightness gradients but the following saturation gradients show a change of the Android color 4289235566 by changing the saturation by 10% instead.

 4289235566

 4289235566

4294967295

 4287459670

 4292919202

 4285749310

 4294826941

 4284039464

 4294965465

 4282460947

 4294967285

 4280948224

 4279042048

 4278190080

 4289235566

 4289235566

 4289233245

 4289237887

 4289231180

 4289239952

 4289228860

 4289242272

 4289226539

 4289244593

 4289224474

 4289246658

 4289222153

 4289248979

 4289220864

 4289251300

 4289253620

 4289255679

Harmonies

Analogous

The Analogous color harmony consists of three colors that are next to each other on the color wheel.



4289955193



4289235566



4288122988

Triad

The Triadic color harmony groups three colors that are evenly spaced from another and form a triangle on the color wheel.



4289235566



4284455573



4288317867

Complementary

The Complementary color scheme is a pair of colors which are on the opposite of each other on the color wheel.



4289235566



4285435048

Split Complementary

Split-complementary colors differ from the complementary color scheme. The scheme consists of three colors, the original color and two neighbors of the complement color.



4286681011



4289235566



4284258470

Square

The Square scheme is like the rectangle color scheme, but the four colors are evenly spaced on the color wheel.



4289235566



4285503874



4285175217



4289496221

Rectangle

The Rectangle color scheme consists of four colors that form a rectangle on the color wheel.



4289235566



4287272048



4285175217



4287794095

Sweetspot

The Sweet Spot groups the original color and five complimentary colors.



4289235566



4292595909



4289228429



4285425504



4293783021



4285427310

Same Dimension

The Same Dimension uses a secret algorithm to generate beautiful new colors.



4289235566



4292586881



4289242734



4283715660



4287907584



4279503360

Inverse Universe

The Inverse Universe completely reimagines the original color for something new.



4285435048



4286689499



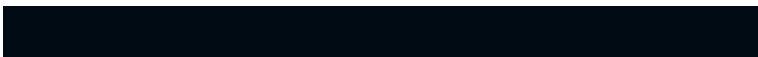
4285427880



4283191380



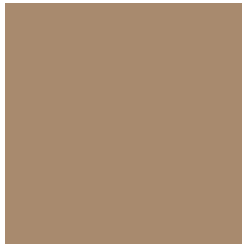
4278209684



4278192916

Previews

White Background



This preview shows how the Android color 4289235566 looks on a white background.

Color Contrast Check

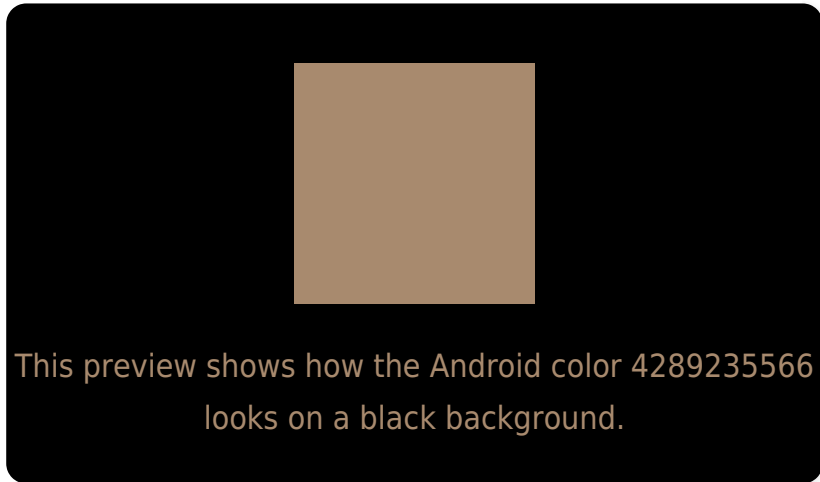
Large Text (above 18pt) WCAG AA ✓ Pass

Any Text WCAG AA ✗ Fail

Large Text (above 18pt) WCAG AAA ✗ Fail

Any Text WCAG AAA ✗ Fail

Black Background



Color Contrast Check

Large Text (above 18pt) WCAG AA ✓ Pass

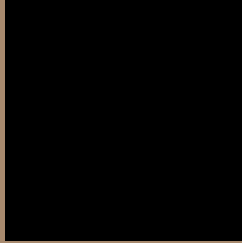
Any Text WCAG AA ✓ Pass

Large Text (above 18pt) WCAG AAA ✓ Pass

Any Text WCAG AAA × Fail

If you want to check with other color combinations, try the [Color Contrast Checker](#).

Android 4289235566 Background



This preview shows how black text looks on a background with the Android color 4289235566.



This preview shows how white text looks on a background with the Android color 4289235566.

Color Blindness Simulation

Color vision deficiency is a very complex topic, and I could not describe the different causes any better than Wikipedia does, so if you want to learn more, you should check out their [article about color blindness](#).


Dichromacy



Original Color
4289235566

Protanopia
4288253808

Deuteranopia
4289301102



Tritanopia
4289496464

Trichromacy



Original Color
4289235566

Protanomaly
4288580975

Deuteranomaly
4289301102

Tritanomaly
4289431428

Monochromacy



Original Color
4289235566

Achromatopsia
4287664272

Achromatomaly
4288253572

CSS Examples

Text

The CSS property to change the color of the text to Android 4289235566 is called "color". The color property can be set on classes, ids or directly on the HTML element.

This example shows how text in the color `rgb(168, 138, 110)` looks like.

```
.text, #text, p{  
    color:rgb(168, 138, 110)  
}
```

If you want to add a text shadow in that color use the text-shadow property, you can generate a text shadow directly with our [CSS Text Shadow Generator](#).

Here you see how black text with a 4 pixel rgb(168, 138, 110) colored shadow looks like.

```
.shadow{ text-shadow: 4px 4px 2px rgb(168, 138, 110) }
```

Border

The CSS property to change the border of an element to Android 4289235566 is called "border". The border property can be set on classes, ids or directly on the HTML element.

This example shows the color as border, it can be applied via the CSS property "border" or "border-color".

```
.border, #border, table{ border:4px solid rgb(168, 138, 110) }
```

If only the border color should be changed use the property `border-color`.

```
.border{ border-color:rgb(168, 138, 110) }
```

If you want to add a box shadow in that color use:

Here you see how a box with a 4 pixel `rgb(168, 138, 110)` colored shadow looks like.

```
.boxshadow{ -moz-box-shadow:4px 4px 4px 4px rgb(168, 138, 110); -webkit-box-shadow:4px 4px 4px 4px rgb(168, 138, 110); box-shadow:4px 4px 4px 4px rgb(168, 138, 110) }
```

Background

The CSS property to change the background color of an element to Android 4289235566 is called "background". The background property can be set on classes, ids or directly on the HTML element.

```
.background, #background, body{  
background: rgb(168, 138, 110) }
```

If only the background color should be changed can be used:

```
.background{ background-color: rgb(168,  
138, 110) }
```

This example shows the color as background, it is applied via the CSS property "background".

To optimize and compress your CSS code, you can use our [online CSS compressor and optimizer](#) based on csstidy. If you want to create a linear or radial gradient as background or border, check our [CSS Gradient Generator](#).

Hey! You found this booklet interesting? Support Converting Colors with the new Membership Option!

The pro membership hides all ads, plus gives you double the colors in the color bucket, and more awesome pro features!

[Learn more, Memberships starting at \\$2.50/m!](#)

**Follow me
on Twitter!**

@ConvertingColor