

Converting Colors

Android(4289235594)

Have a look what the booklet for
Android(4289235594) contains.

Android(4289235594)	3
<i>Conversions</i>	4
<i>Details</i>	6
<i>Harmonies</i>	11
<i>Previews</i>	23
<i>Color Blindness Simulation</i>	26
<i>CSS Examples</i>	29

Color

Android(4289235594)

Conversions

Conversions Part 1

Format	Color
Hex	A88A8A
RGB	168, 138, 138
RGB Percent	66%, 54%, 54%
CMY	0.3412, 0.4588, 0.4588
CMYK	0.00, 0.18, 0.18, 0.34
HSL	0°, 15%, 60%
HSV	0°, 18%, 66%
XYZ	29.8244, 28.3368, 27.9424
YIQ	146.9700, 17.8800, 6.3600

Conversions

Conversions Part 2

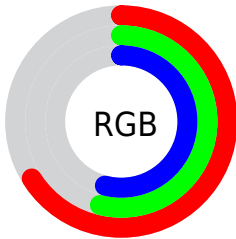
Format	Color
R_{YB}	168, 138, 138
Decimal	11045514
CIE _{Lab}	60.19, 11.35, 4.27
CIE _{LCh}	60, 12.130, 20.607
Yxy	28.3368, 0.3464, 0.3291
Android (android.graphics.Color)	4289235594 (0xFFA88A8A)
YUV	146.9700, -4.4222, 18.4433
Hunter-Lab	53.2323, 6.8514, 6.1404

Details

The Android color `4289235594` is a dark color, and the websafe version is hex `CC9999`. A complement of this color would be `4287277224`, and the grayscale version is `4287861651`.

A 20% lighter version of the original color is `4292919231`, and `4285814872` is the 20% darker color. If you saturate the color by 10%, you get `4289231225`, and if you desaturate by 10%, it is `4289239963`.

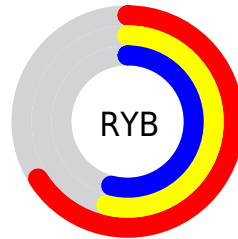
Distribution



Red (66%)

Green (54%)

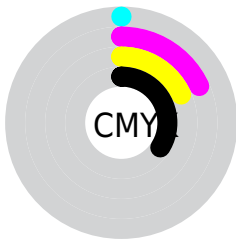
Blue (54%)



Red (66%)

Yellow (54%)

Blue (54%)

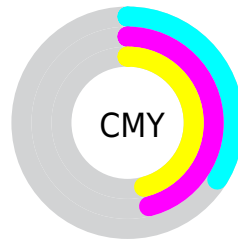


Cyan (0%)

Magenta (18%)

Yellow (18%)

Black (34%)



Cyan (34%)

Magenta (46%)

Yellow (46%)

Brightness & Saturation Gradients

These gradients show how the Android color 4289235594 changes by changing the brightness by 10 percent. The first figure shows a shift by +10% for each color and the second figure -10%.

Similar to the brightness gradients but the following saturation gradients show a change of the Android color 4289235594 by changing the saturation by 10% instead.

 4289235594

 4289235594

4294967295

 4287459697

 4292919231

 4285814872

 4294761435

 4284170561

 4294965496

 4282591787

 4281079319

 4279762944

 4278190080

 4289235594

 4289235594

 4289231225

 4289239963

 4289226856

 4289244332

 4289222744

 4289248444

 4289218375

 4289252813

 4289214006

 4289257182

 4289209637

 4289261551

 4289205268

 4289265663

 4289201156

 4289200128

Harmonies

Analogous

The Analogous color harmony consists of three colors that are next to each other on the color wheel.



4289038997



4289235594



4289039489

Triad

The Triadic color harmony groups three colors that are evenly spaced from another and form a triangle on the color wheel.



4289235594



4286944899



4286747558

Complementary

The Complementary color scheme is a pair of colors which are on the opposite of each other on the color wheel.



4289235594



4287277224

Split Complementary

Split-complementary colors differ from the complementary color scheme. The scheme consists of three colors, the original color and two neighbors of the complement color.



4286092961



4289235594



4286289805

Square

The Square scheme is like the rectangle color scheme, but the four colors are evenly spaced on the color wheel.



4289235594



4287796093



4285962136



4287598501

Rectangle

The Rectangle color scheme consists of four colors that form a rectangle on the color wheel.



4289235594



4288712317



4285962136



4286485669

Sweetspot

The Sweet Spot groups the original color and five complimentary colors.



4289235594



4292595920



4289235624



4285425511



4293783021



4285427310

Same Dimension

The Same Dimension uses a secret algorithm to generate beautiful new colors.



4289235594



4292586925



4289239434



4283714636



4287889408



4279500800

Inverse Universe

The Inverse Universe completely reimagines the original color for something new.



4287277224



4289584091



4287273384



4283192404



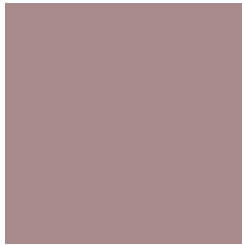
4278228116



4278195220

Previews

White Background



This preview shows how the Android color 4289235594 looks on a white background.

Color Contrast Check

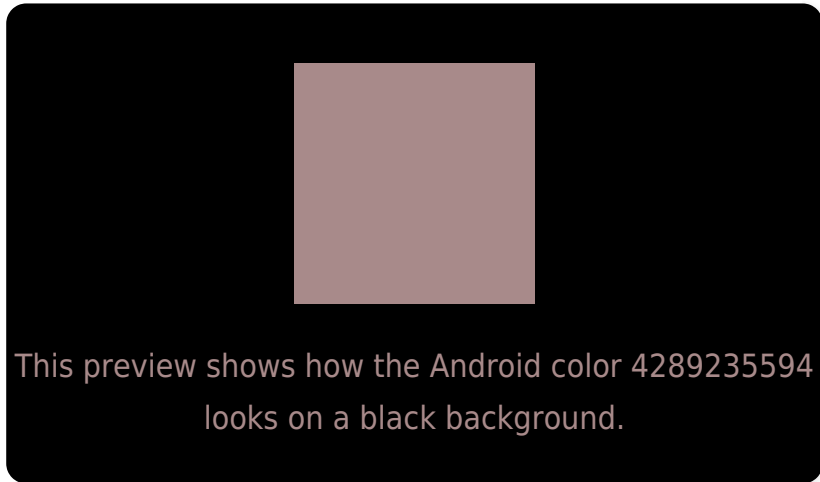
Large Text (above 18pt) WCAG AA ✓ Pass

Any Text WCAG AA ✗ Fail

Large Text (above 18pt) WCAG AAA ✗ Fail

Any Text WCAG AAA ✗ Fail

Black Background



Color Contrast Check

Large Text (above 18pt) WCAG AA ✓ Pass

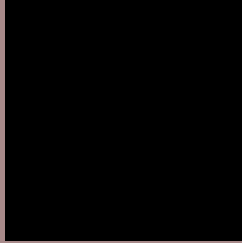
Any Text WCAG AA ✓ Pass

Large Text (above 18pt) WCAG AAA ✓ Pass

Any Text WCAG AAA × Fail

If you want to check with other color combinations, try the [Color Contrast Checker](#).

Android 4289235594 Background



This preview shows how black text looks on a background with the Android color 4289235594.



This preview shows how white text looks on a background with the Android color 4289235594.

Color Blindness Simulation

Color vision deficiency is a very complex topic, and I could not describe the different causes any better than Wikipedia does, so if you want to learn more, you should check out their [article about color blindness](#).


Dichromacy



Original Color
4289235594

Protanopia
4287992206

Deuteranopia
4288842890



Tritanopia
4289300883

Trichromacy



Original Color
4289235594

Protanomaly
4288450189

Deuteranomaly
4288973706

Tritanomaly
4289300880

Monochromacy



Original Color
4289235594

Achromatopsia
4287861651

Achromatomaly
4288385168

CSS Examples

Text

The CSS property to change the color of the text to Android 4289235594 is called "color". The color property can be set on classes, ids or directly on the HTML element.

This example shows how text in the color `rgb(168, 138, 138)` looks like.

```
.text, #text, p{  
    color:rgb(168, 138, 138)  
}
```

If you want to add a text shadow in that color use the text-shadow property, you can generate a text shadow directly with our [CSS Text Shadow Generator](#).

Here you see how black text with a 4 pixel rgb(168, 138, 138) colored shadow looks like.

```
.shadow{ text-shadow: 4px 4px 2px rgb(168, 138, 138) }
```

Border

The CSS property to change the border of an element to Android 4289235594 is called "border". The border property can be set on classes, ids or directly on the HTML element.

This example shows the color as border, it can be applied via the CSS property "border" or "border-color".

```
.border, #border, table{ border:4px solid rgb(168, 138, 138) }
```

If only the border color should be changed use the property `border-color`.

```
.border{ border-color:rgb(168, 138, 138) }
```

If you want to add a box shadow in that color use:

Here you see how a box with a 4 pixel `rgb(168, 138, 138)` colored shadow looks like.

```
.boxshadow{ -moz-box-shadow:4px 4px 4px  
4px rgb(168, 138, 138); -webkit-box-  
shadow:4px 4px 4px 4px rgb(168, 138, 138);  
box-shadow:4px 4px 4px 4px rgb(168, 138,  
138) }
```

Background

The CSS property to change the background color of an element to Android 4289235594 is called "background". The background property can be set on classes, ids or directly on the HTML element.

```
.background, #background, body{  
background: rgb(168, 138, 138) }
```

If only the background color should be changed can be used:

```
.background{ background-color: rgb(168,  
138, 138) }
```

This example shows the color as background, it is applied via the CSS property "background".

To optimize and compress your CSS code, you can use our [online CSS compressor and optimizer](#) based on csstidy. If you want to create a linear or radial gradient as background or border, check our [CSS Gradient Generator](#).

Hey! You found this booklet interesting? Support Converting Colors with the new Membership Option!

The pro membership hides all ads, plus gives you double the colors in the color bucket, and more awesome pro features!

[Learn more, Memberships starting at \\$2.50/m!](#)

**Follow me
on Twitter!**

@ConvertingColor