

Converting Colors

Android(4289295694)

Have a look what the booklet for
Android(4289295694) contains.

Android(4289295694)	3
<i>Conversions</i>	4
<i>Details</i>	6
<i>Harmonies</i>	11
<i>Previews</i>	23
<i>Color Blindness Simulation</i>	26
<i>CSS Examples</i>	29

Color

Android(4289295694)

Conversions

Conversions Part 1

Format	Color
Hex	A9754E
RGB	169, 117, 78
RGB Percent	66%, 46%, 31%
CMY	0.3373, 0.5412, 0.6941
CMYK	0.00, 0.31, 0.54, 0.34
HSL	26°, 37%, 48%
HSV	26°, 54%, 66%
XYZ	24.0986, 21.7077, 10.1276
YIQ	128.1020, 43.5110, -1.1050

Conversions

Conversions Part 2

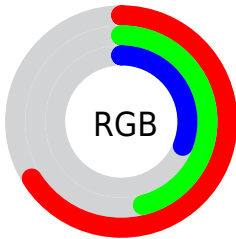
Format	Color
R_{YB}	169, 146, 78
Decimal	11105614
CIE Lab	53.72, 15.96, 29.58
CIE LCh	54, 33.614, 61.646
Yxy	21.7077, 0.4308, 0.3881
Android (android.graphics.Color)	4289295694 (0xFFA9754E)
YUV	128.1020, -24.7003, 35.8675
Hunter-Lab	46.5915, 10.7909, 19.7262

Details

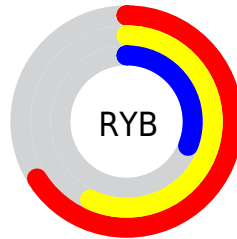
The Android color `4289295694` is a dark color, and the websafe version is hex `996633`. A complement of this color would be `4283335337`, and the grayscale version is `4286611584`.

A 20% lighter version of the original color is `4293110144`, and `4285678880` is the 20% darker color. If you saturate the color by 10%, you get `4289293117`, and if you desaturate by 10%, it is `4289298271`.

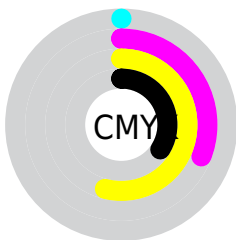
Distribution



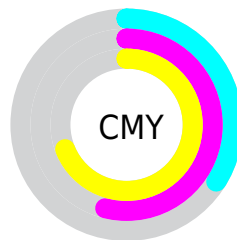
- Red (66%)
- Green (46%)
- Blue (31%)



- Red (66%)
- Yellow (57%)
- Blue (31%)



- Cyan (0%)
- Magenta (31%)
- Yellow (54%)
- Black (34%)



- Cyan (34%)
- Magenta (54%)
- Yellow (69%)

Brightness & Saturation Gradients

These gradients show how the Android color 4289295694 changes by changing the brightness by 10 percent. The first figure shows a shift by +10% for each color and the second figure -10%.

Similar to the brightness gradients but the following saturation gradients show a change of the Android color 4289295694 by changing the saturation by 10% instead.



4289295694



4289295694

4294967295



4287454263



4293110144



4285678880



4294952346



4283903498



4294959541



4282259712



4294966737



4280680448



4294967277



4278190080



4289295694



4289295694



4289293117



4289298271



4289290796



4289300592

■ 4289288219

■ 4289303169

■ 4289285642

■ 4289305746

■ 4289284096

■ 4289308066

■ 4289310643

■ 4289313220

■ 4289315541

■ 4289318118

Harmonies

Analogous

The Analogous color harmony consists of three colors that are next to each other on the color wheel.



4290210915



4289295694



4287725382

Triad

The Triadic color harmony groups three colors that are evenly spaced from another and form a triangle on the color wheel.



4289295694



4280324225



4286937266

Complementary

The Complementary color scheme is a pair of colors which are on the opposite of each other on the color wheel.



4289295694



428335337

Split Complementary

Split-complementary colors differ from the complementary color scheme. The scheme consists of three colors, the original color and two neighbors of the complement color.



4283925434



4289295694



4278226846

Square

The Square scheme is like the rectangle color scheme, but the four colors are evenly spaced on the color wheel.



4289295694



4283469156



4279405491



4289097372

Rectangle

The Rectangle color scheme consists of four colors that form a rectangle on the color wheel.



4289295694



4286481737



4279405491



4286020790

Sweetspot

The Sweet Spot groups the original color and five complimentary colors.



4289295694



4292593592



4289285763



4285424217



4293783021



4285427310

Same Dimension

The Same Dimension uses a secret algorithm to generate beautiful new colors.



4289295694



4292577869



4289306958



4283715404



4287905536



4279503104

Inverse Universe

The Inverse Universe completely reimagines the original color for something new.



4283335337



4283277019



4283324073



4283191636



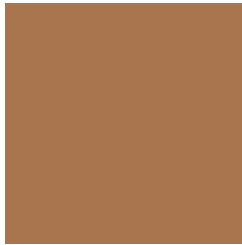
4278211988



4278193172

Previews

White Background



This preview shows how the Android color 4289295694 looks on a white background.

Color Contrast Check

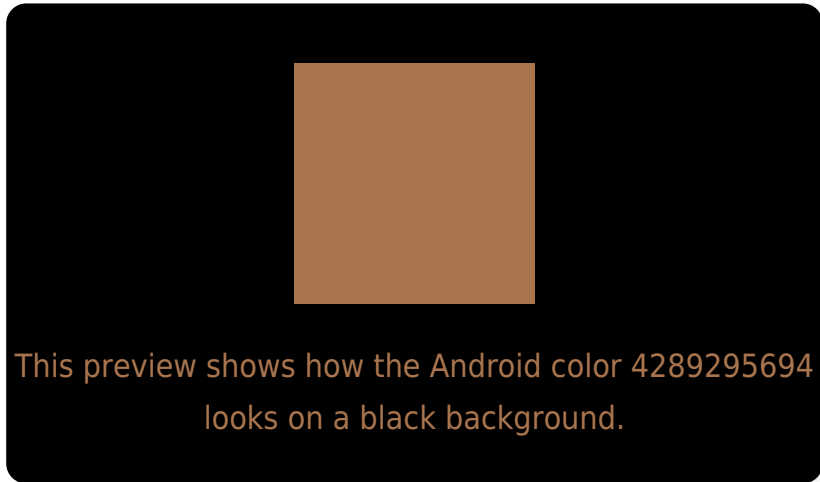
Large Text (above 18pt) WCAG AA ✓ Pass

Any Text WCAG AA ✗ Fail

Large Text (above 18pt) WCAG AAA ✗ Fail

Any Text WCAG AAA ✗ Fail

Black Background



Color Contrast Check

Large Text (above 18pt) WCAG AA ✓ Pass

Any Text WCAG AA ✓ Pass

Large Text (above 18pt) WCAG AAA ✓ Pass

Any Text WCAG AAA × Fail

If you want to check with other color combinations, try the [Color Contrast Checker](#).

Android 4289295694 Background



This preview shows how black text looks on a background with the Android color 4289295694.



This preview shows how white text looks on a background with the Android color 4289295694.

Color Blindness Simulation

Color vision deficiency is a very complex topic, and I could not describe the different causes any better than Wikipedia does, so if you want to learn more, you should check out their [article about color blindness](#).

Dichromacy



Original Color


4289295694

Protanopia

4287398226

Deuteranopia

4288445261



Tritanopia
4289491064

Trichromacy



Original Color
4289295694

Protanomaly
4288118097

Deuteranomaly
4288772429

Tritanomaly
4289426025

Monochromacy



Original Color
4289295694

Achromatopsia
4286611584

Achromatomaly
4287593582

CSS Examples

Text

The CSS property to change the color of the text to Android 4289295694 is called "color". The color property can be set on classes, ids or directly on the HTML element.

This example shows how text in the color `rgb(169, 117, 78)` looks like.

```
.text, #text, p{  
    color:rgb(169, 117, 78)  
}
```

If you want to add a text shadow in that color use the text-shadow property, you can generate a text shadow directly with our [CSS Text Shadow Generator](#).

Here you see how black text with a 4 pixel rgb(169, 117, 78) colored shadow looks like.

```
.shadow{ text-shadow: 4px 4px 2px rgb(169, 117, 78) }
```

Border

The CSS property to change the border of an element to Android 4289295694 is called "border". The border property can be set on classes, ids or directly on the HTML element.

This example shows the color as border, it can be applied via the CSS property "border" or "border-color".

```
.border, #border, table{ border:4px solid rgb(169, 117, 78) }
```

If only the border color should be changed use the property `border-color`.

```
.border{ border-color:rgb(169, 117, 78) }
```

If you want to add a box shadow in that color use:

Here you see how a box with a 4 pixel `rgb(169, 117, 78)` colored shadow looks like.

```
.boxshadow{ -moz-box-shadow:4px 4px 4px  
4px rgb(169, 117, 78); -webkit-box-  
shadow:4px 4px 4px 4px rgb(169, 117, 78);  
box-shadow:4px 4px 4px 4px rgb(169, 117,  
78) }
```

Background

The CSS property to change the background color of an element to Android 4289295694 is called "background". The background property can be set on classes, ids or directly on the HTML element.

```
.background, #background, body{  
background: rgb(169, 117, 78) }
```

If only the background color should be changed can be used:

```
.background{ background-color: rgb(169,  
117, 78) }
```

This example shows the color as background, it is applied via the CSS property "background".

To optimize and compress your CSS code, you can use our [online CSS compressor and optimizer](#) based on csstidy. If you want to create a linear or radial gradient as background or border, check our [CSS Gradient Generator](#).

Hey! You found this booklet interesting? Support Converting Colors with the new Membership Option!

The pro membership hides all ads, plus gives you double the colors in the color bucket, and more awesome pro features!

[Learn more, Memberships starting at \\$2.50/m!](#)

**Follow me
on Twitter!**

@ConvertingColor