

Converting Colors

Android(4289297494)

Have a look what the booklet for
Android(4289297494) contains.

Android(4289297494)	3
<i>Conversions</i>	4
<i>Details</i>	6
<i>Harmonies</i>	11
<i>Previews</i>	23
<i>Color Blindness Simulation</i>	26
<i>CSS Examples</i>	29

Color

Android(4289297494)

Conversions

Conversions Part 1

Format	Color
Hex	A97C56
RGB	169, 124, 86
RGB Percent	66%, 49%, 34%
CMY	0.3373, 0.5137, 0.6627
CMYK	0.00, 0.27, 0.49, 0.34
HSL	27°, 33%, 50%
HSV	27°, 49%, 66%
XYZ	25.2496, 23.5222, 12.0135
YIQ	133.1230, 39.0180, -2.2780

Conversions

Conversions Part 2

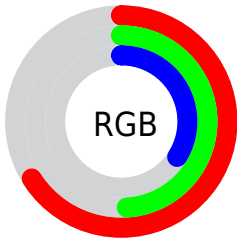
Format	Color
RYB	169, 156, 86
Decimal	11107414
CIELab	55.61, 12.77, 27.53
CIELCh	56, 30.353, 65.111
Yxy	23.5222, 0.4154, 0.3870
Android (android.graphics.Color)	4289297494 (0xFFA97C56)
YUV	133.1230, -23.2316, 31.4641
Hunter-Lab	48.4997, 8.0549, 19.2634

Details

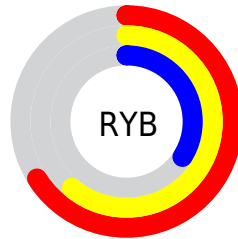
The Android color `4289297494` is a dark color, and the websafe version is hex `996633`. A complement of this color would be `4283859881`, and the grayscale version is `4286940549`.

A 20% lighter version of the original color is `4293046664`, and `4285680424` is the 20% darker color. If you saturate the color by 10%, you get `4289295173`, and if you desaturate by 10%, it is `4289299815`.

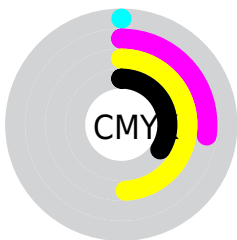
Distribution



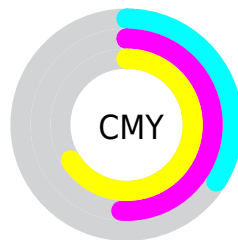
- Red (66%)
- Green (49%)
- Blue (34%)



- Red (66%)
- Yellow (61%)
- Blue (34%)



- Cyan (0%)
- Magenta (27%)
- Yellow (49%)
- Black (34%)



- Cyan (34%)
- Magenta (51%)
- Yellow (66%)

Brightness & Saturation Gradients

These gradients show how the Android color 4289297494 changes by changing the brightness by 10 percent. The first figure shows a shift by +10% for each color and the second figure -10%.

Similar to the brightness gradients but the following saturation gradients show a change of the Android color 4289297494 by changing the saturation by 10% instead.



4289297494



4289297494

4294967295



4287456062



4293046664



4285680424



4294954147



4283970578



4294961342



4282326784



4294967258



4280683008



4294967286



4278190080



4289297494



4289297494



4289295173



4289299815



4289292852



4289302136

■ 4289290531

■ 4289304457

■ 4289287954

■ 4289307034

■ 4289285634

■ 4289309354

■ 4289285376

■ 4289311675

■ 4289313996

■ 4289316317

■ 4289318638

Harmonies

Analogous

The Analogous color harmony consists of three colors that are next to each other on the color wheel.



4290212968



4289297494



4287792464

Triad

The Triadic color harmony groups three colors that are evenly spaced from another and form a triangle on the color wheel.



4289297494



4281635721



4287528368

Complementary

The Complementary color scheme is a pair of colors which are on the opposite of each other on the color wheel.



4289297494



4283859881

Split Complementary

Split-complementary colors differ from the complementary color scheme. The scheme consists of three colors, the original color and two neighbors of the complement color.



4284974777



4289297494



4280062627

Square

The Square scheme is like the rectangle color scheme, but the four colors are evenly spaced on the color wheel.



4289297494



4283863406



4282093236



4289361052

Rectangle

The Rectangle color scheme consists of four colors that form a rectangle on the color wheel.



4289297494



4286614101



4282093236



4286742709

Sweetspot

The Sweet Spot groups the original color and five complimentary colors.



4289297494



4292594106



4289287812



4285424474



4293783021



4285427310

Same Dimension

The Same Dimension uses a secret algorithm to generate beautiful new colors.



4289297494



4292580698



4289307990



4283715660



4287906816



4279503104

Inverse Universe

The Inverse Universe completely reimagines the original color for something new.



4283859881



4284129499



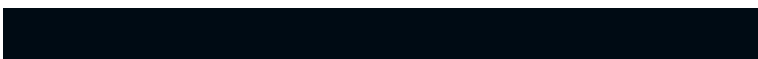
4283849385



4283191380



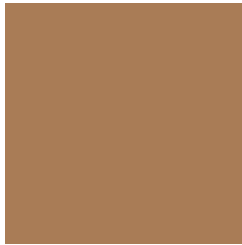
4278210708



4278192916

Previews

White Background



This preview shows how the Android color 4289297494 looks on a white background.

Color Contrast Check

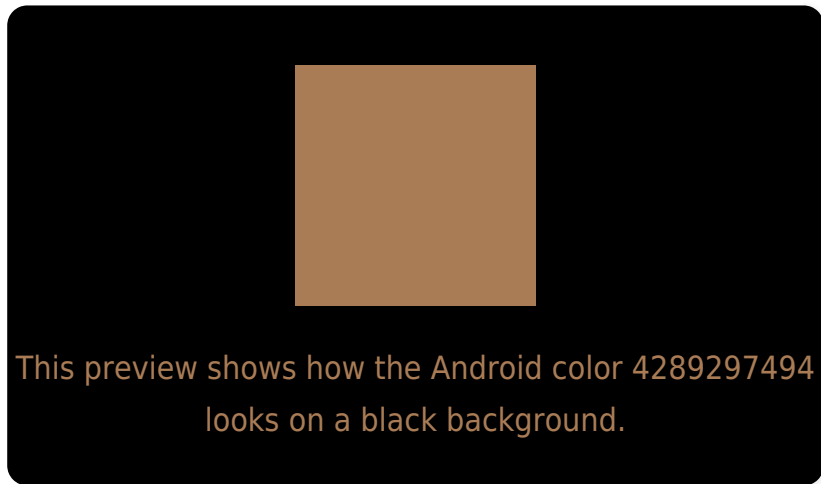
Large Text (above 18pt) WCAG AA ✓ Pass

Any Text WCAG AA ✗ Fail

Large Text (above 18pt) WCAG AAA ✗ Fail

Any Text WCAG AAA ✗ Fail

Black Background



Color Contrast Check

Large Text (above 18pt) WCAG AA ✓ Pass

Any Text WCAG AA ✓ Pass

Large Text (above 18pt) WCAG AAA ✓ Pass

Any Text WCAG AAA × Fail

If you want to check with other color combinations, try the [Color Contrast Checker](#).

Android 4289297494 Background



This preview shows how black text looks on a background with the Android color 4289297494.



This preview shows how white text looks on a background with the Android color 4289297494.

Color Blindness Simulation

Color vision deficiency is a very complex topic, and I could not describe the different causes any better than Wikipedia does, so if you want to learn more, you should check out their [article about color blindness](#).


Dichromacy



Original Color
4289297494

Protanopia
4287726938

Deuteranopia
4288774229



Tritanopia
4289558400

Trichromacy



Original Color
4289297494

Protanomaly
4288315993

Deuteranomaly
4288970581

Tritanomaly
4289493361

Monochromacy



Original Color
4289297494

Achromatopsia
4286940549

Achromatomaly
4287791732

CSS Examples

Text

The CSS property to change the color of the text to Android 4289297494 is called "color". The color property can be set on classes, ids or directly on the HTML element.

This example shows how text in the color `rgb(169, 124, 86)` looks like.

```
.text, #text, p{  
    color:rgb(169, 124, 86)  
}
```

If you want to add a text shadow in that color use the text-shadow property, you can generate a text shadow directly with our [CSS Text Shadow Generator](#).

Here you see how black text with a 4 pixel rgb(169, 124, 86) colored shadow looks like.

```
.shadow{ text-shadow: 4px 4px 2px rgb(169, 124, 86) }
```

Border

The CSS property to change the border of an element to Android 4289297494 is called "border". The border property can be set on classes, ids or directly on the HTML element.

This example shows the color as border, it can be applied via the CSS property "border" or "border-color".

```
.border, #border, table{ border:4px solid rgb(169, 124, 86) }
```

If only the border color should be changed use the property `border-color`.

```
.border{ border-color:rgb(169, 124, 86) }
```

If you want to add a box shadow in that color use:

Here you see how a box with a 4 pixel `rgb(169, 124, 86)` colored shadow looks like.

```
.boxshadow{ -moz-box-shadow:4px 4px 4px  
4px rgb(169, 124, 86); -webkit-box-  
shadow:4px 4px 4px 4px rgb(169, 124, 86);  
box-shadow:4px 4px 4px 4px rgb(169, 124,  
86) }
```

Background

The CSS property to change the background color of an element to Android 4289297494 is called "background". The background property can be set on classes, ids or directly on the HTML element.

```
.background, #background, body{  
background: rgb(169, 124, 86) }
```

If only the background color should be changed can be used:

```
.background{ background-color: rgb(169,  
124, 86) }
```

This example shows the color as background, it is applied via the CSS property "background".

To optimize and compress your CSS code, you can use our [online CSS compressor and optimizer](#) based on csstidy. If you want to create a linear or radial gradient as background or border, check our [CSS Gradient Generator](#).

Hey! You found this booklet interesting? Support Converting Colors with the new Membership Option!

The pro membership hides all ads, plus gives you double the colors in the color bucket, and more awesome pro features!

[Learn more, Memberships starting at \\$2.50/m!](#)

**Follow me
on Twitter!**

@ConvertingColor