

# Converting Colors

Android(4289298006)

Have a look what the booklet for  
Android(4289298006) contains.

<b>Android(4289298006)</b> .....	3
<b><i>Conversions</i></b> .....	4
<b><i>Details</i></b> .....	6
<b><i>Harmonies</i></b> .....	11
<b><i>Previews</i></b> .....	23
<b><i>Color Blindness Simulation</i></b> .....	26
<b><i>CSS Examples</i></b> .....	29

# Color

**Android(4289298006)**

# Conversions

## Conversions Part 1

<b>Format</b>	<b>Color</b>
Hex	A97E56
RGB	169, 126, 86
RGB Percent	66%, 49%, 34%
CMY	0.3373, 0.5059, 0.6627
CMYK	0.00, 0.25, 0.49, 0.34
HSL	29°, 33%, 50%
HSV	29°, 49%, 66%
XYZ	25.5028, 24.0286, 12.0979
YIQ	134.2970, 38.4680, -3.3240

# Conversions

## Conversions Part 2

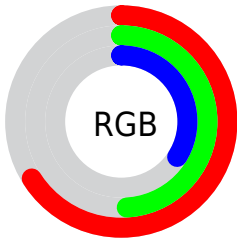
<b>Format</b>	<b>Color</b>
<b>RYB</b>	169, 163, 86
Decimal	11107926
CIELab	56.12, 11.65, 28.19
CIELCh	56, 30.500, 67.553
Yxy	24.0286, 0.4138, 0.3899
Android (android.graphics.Color)	4289298006 (0xFFA97E56)
YUV	134.2970, -23.8104, 30.4345
Hunter-Lab	49.0190, 7.0837, 19.6804

# Details

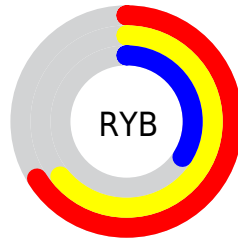
The Android color `4289298006` is a dark color, and the websafe version is hex `CC9966`. A complement of this color would be `4283859369`, and the grayscale version is `4287072135`.

A 20% lighter version of the original color is `4293047176`, and `4285680936` is the 20% darker color. If you saturate the color by 10%, you get `4289295685`, and if you desaturate by 10%, it is `4289300327`.

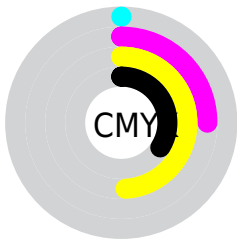
# Distribution



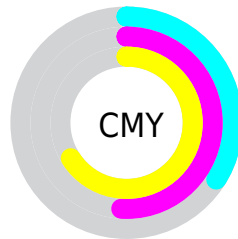
- Red (66%)
- Green (49%)
- Blue (34%)



- Red (66%)
- Yellow (64%)
- Blue (34%)



- Cyan (0%)
- Magenta (25%)
- Yellow (49%)
- Black (34%)



- Cyan (34%)
- Magenta (51%)
- Yellow (66%)

# Brightness & Saturation Gradients

These gradients show how the Android color 4289298006 changes by changing the brightness by 10 percent. The first figure shows a shift by +10% for each color and the second figure -10%.

Similar to the brightness gradients but the following saturation gradients show a change of the Android color 4289298006 by changing the saturation by 10% instead.





4289298006



4289298006

4294967295



4287456574



4293047176



4285680936



4294954659



4283971090



4294961854



4282392832



4294967258



4280683520



4294967286



4278190080



4289298006



4289298006



4289295685



4289300327



4289293364



4289302648

■ 4289291299

■ 4289304713

■ 4289288978

■ 4289307034

■ 4289286658

■ 4289309354

■ 4289286400

■ 4289311675

■ 4289313740

■ 4289316061

■ 4289318382

# Harmonies

## Analogous

The Analogous color harmony consists of three colors that are next to each other on the color wheel.



4290279016



4289298006



4287792977

# Triad

The Triadic color harmony groups three colors that are evenly spaced from another and form a triangle on the color wheel.



4289298006



4281505165



4287790513

# Complementary

The Complementary color scheme is a pair of colors which are on the opposite of each other on the color wheel.



4289298006



4283859369

# Split Complementary

Split-complementary colors differ from the complementary color scheme. The scheme consists of three colors, the original color and two neighbors of the complement color.



4285302715



4289298006



4280193958

# Square

The Square scheme is like the rectangle color scheme, but the four colors are evenly spaced on the color wheel.



4289298006



4283798385



4282355639



4289557915

# Rectangle

The Rectangle color scheme consists of four colors that form a rectangle on the color wheel.



4289298006



4286549079



4282355639



4287070389



# Sweetspot

The Sweet Spot groups the original color and five complimentary colors.



4289298006



4292594362



4289287810



4285424474



4293783021



4285427310



# Same Dimension

The Same Dimension uses a secret algorithm to generate beautiful new colors.



4289298006



4292581466



4289308246



4283715660



4287907584



4279503360



# Inverse Universe

The Inverse Universe completely reimagines the original color for something new.



4283859369



4284128731



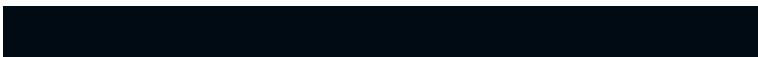
4283849129



4283191380



4278209940

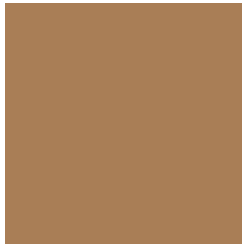


4278192916



# Previews

## White Background



This preview shows how the Android color 4289298006 looks on a white background.

## Color Contrast Check

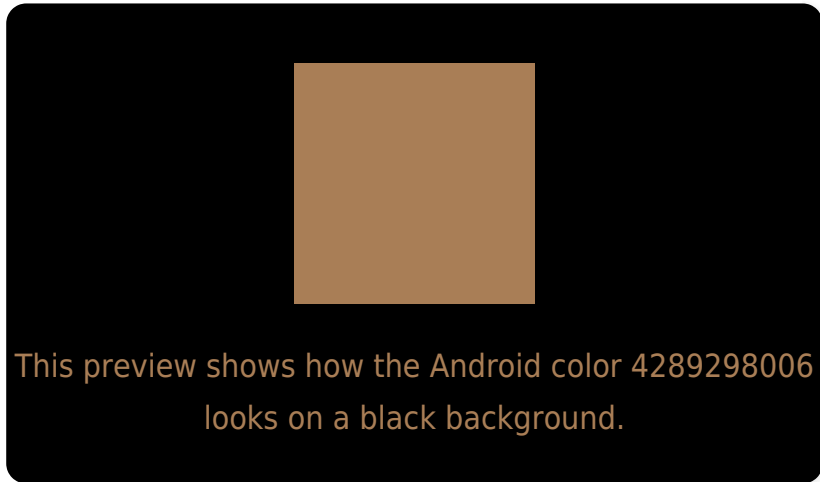
Large Text (above 18pt) WCAG AA ✓ Pass

Any Text WCAG AA ✗ Fail

Large Text (above 18pt) WCAG AAA ✗ Fail

Any Text WCAG AAA ✗ Fail

# Black Background



## Color Contrast Check

Large Text (above 18pt) WCAG AA ✓ Pass

Any Text WCAG AA ✓ Pass

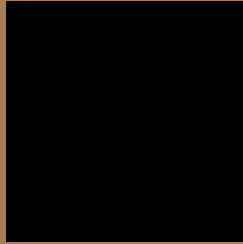
Large Text (above 18pt) WCAG AAA ✓ Pass

Any Text WCAG AAA × Fail

If you want to check with other color combinations, try the [Color Contrast Checker](#).



# Android 4289298006 Background



This preview shows how black text looks on a background with the Android color 4289298006.



This preview shows how white text looks on a background with the Android color 4289298006.

# Color Blindness Simulation

Color vision deficiency is a very complex topic, and I could not describe the different causes any better than Wikipedia does, so if you want to learn more, you should check out their [article about color blindness](#).

## Dichromacy



**Original Color**  
4289298006

**Protanopia**  
4287792985

**Deuteranopia**  
4288905557



# Trichromacy



**Original Color**  
4289298006

**Protanomaly**  
4288316504

**Deuteranomaly**  
4289036373

**Tritanomaly**  
4289493618

# Monochromacy



**Original Color**  
4289298006

**Achromatopsia**  
4287006342

**Achromatomaly**  
4287857525

# CSS Examples

## Text

The CSS property to change the color of the text to Android 4289298006 is called "color". The color property can be set on classes, ids or directly on the HTML element.

This example shows how text in the color `rgb(169, 126, 86)` looks like.

```
.text, #text, p{  
    color:rgb(169, 126, 86)  
}
```

If you want to add a text shadow in that color use the text-shadow property, you can generate a text shadow directly with our [CSS Text Shadow Generator](#).

Here you see how black text with a 4 pixel rgb(169, 126, 86) colored shadow looks like.

```
.shadow{ text-shadow: 4px 4px 2px rgb(169, 126, 86) }
```

## Border

The CSS property to change the border of an element to Android 4289298006 is called "border". The border property can be set on classes, ids or directly on the HTML element.

This example shows the color as border, it can be applied via the CSS property "border" or "border-color".

```
.border, #border, table{ border:4px solid rgb(169, 126, 86) }
```

If only the border color should be changed use the property border-color.

```
.border{ border-color:rgb(169, 126, 86) }
```

If you want to add a box shadow in that color use:

Here you see how a box with a 4 pixel rgb(169, 126, 86) colored shadow looks like.

```
.boxshadow{ -moz-box-shadow:4px 4px 4px  
4px rgb(169, 126, 86); -webkit-box-  
shadow:4px 4px 4px 4px rgb(169, 126, 86);  
box-shadow:4px 4px 4px 4px rgb(169, 126,  
86) }
```

# Background

The CSS property to change the background color of an element to Android 4289298006 is called "background". The background property can be set on classes, ids or directly on the HTML element.

```
.background, #background, body{  
background: rgb(169, 126, 86) }
```

If only the background color should be changed can be used:

```
.background{ background-color: rgb(169,  
126, 86) }
```

This example shows the color as background, it is applied via the CSS property "background".

To optimize and compress your CSS code, you can use our [online CSS compressor and optimizer](#) based on csstidy. If you want to create a linear or radial gradient as background or border, check our [CSS Gradient Generator](#).



Hey! You found this booklet interesting? Support Converting Colors with the new Membership Option!

The pro membership hides all ads, plus gives you double the colors in the color bucket, and more awesome pro features!

**[Learn more, Memberships starting at \\$2.50/m!](#)**

**Follow me  
on Twitter!**

@ConvertingColor