

Converting Colors

Android(4289298043)

Have a look what the booklet for
Android(4289298043) contains.

Android(4289298043)	3
<i>Conversions</i>	4
<i>Details</i>	6
<i>Harmonies</i>	11
<i>Previews</i>	23
<i>Color Blindness Simulation</i>	26
<i>CSS Examples</i>	29

Color

Android(4289298043)

Conversions

Conversions Part 1

Format	Color
Hex	A97E7B
RGB	169, 126, 123
RGB Percent	66%, 49%, 48%
CMY	0.3373, 0.5059, 0.5176
CMYK	0.00, 0.25, 0.27, 0.34
HSL	4°, 21%, 57%
HSV	4°, 27%, 66%
XYZ	27.3982, 24.7868, 22.0792
YIQ	138.5150, 26.5910, 8.1830

Conversions

Conversions Part 2

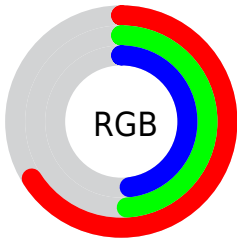
Format	Color
R_{YB}	169, 126, 123
Decimal	11107963
CIE _{Lab}	56.87, 16.21, 8.13
CIE _{LCh}	57, 18.135, 26.645
Yxy	24.7868, 0.3689, 0.3338
Android (android.graphics.Color)	4289298043 (0xFFA97E7B)
YUV	138.5150, -7.6489, 26.7353
Hunter-Lab	49.7863, 11.1053, 8.5566

Details

The Android color **4289298043** is a dark color, and the websafe version is hex **996666**. A complement of this color would be **4286293673**, and the grayscale version is **4287335307**.

A 20% lighter version of the original color is **4292981679**, and **4285812042** is the 20% darker color. If you saturate the color by 10%, you get **4289293930**, and if you desaturate by 10%, it is **4289302156**.

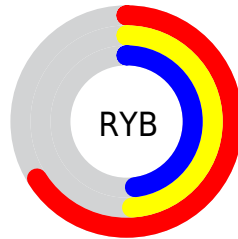
Distribution



Red (66%)

Green (49%)

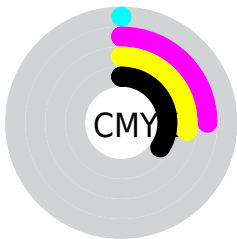
Blue (48%)



Red (66%)

Yellow (49%)

Blue (48%)

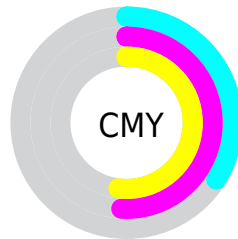


Cyan (0%)

Magenta (25%)

Yellow (27%)

Black (34%)



Cyan (34%)

Magenta (51%)

Yellow (52%)

Brightness & Saturation Gradients

These gradients show how the Android color 4289298043 changes by changing the brightness by 10 percent. The first figure shows a shift by +10% for each color and the second figure -10%.

Similar to the brightness gradients but the following saturation gradients show a change of the Android color 4289298043 by changing the saturation by 10% instead.



4289298043



4289298043

4294967295



4287522146



4292981679



4285812042



4294889163



4284102196



4294962151



4282523679



4281010950



4278648832



4278190080



4289298043



4289298043



4289293930



4289302156

 4289289817

 4289306269

 4289285960

 4289310126

 4289281847

 4289314239

 4289277735

 4289318351

 4289273622

 4289322464

 4289269509

 4289326577

 4289268480

 4289330431

 4289331199

Harmonies

Analogous

The Analogous color harmony consists of three colors that are next to each other on the color wheel.



4289166731



4289298043



4288905839

Triad

The Triadic color harmony groups three colors that are evenly spaced from another and form a triangle on the color wheel.



4289298043



4285763703



4285827752

Complementary

The Complementary color scheme is a pair of colors which are on the opposite of each other on the color wheel.



4289298043



4286293673

Split Complementary

Split-complementary colors differ from the complementary color scheme. The scheme consists of three colors, the original color and two neighbors of the complement color.



4284649378



4289298043



4284780934

Square

The Square scheme is like the rectangle color scheme, but the four colors are evenly spaced on the color wheel.



4289298043



4286942316



4284256662



4287202725

Rectangle

The Rectangle color scheme consists of four colors that form a rectangle on the color wheel.



4289298043



4288382314



4284256662



4285369511

Sweetspot

The Sweet Spot groups the original color and five complimentary colors.



4289298043



4292594634



4289297319



4285424483



4293783021



4285427310

Same Dimension

The Same Dimension uses a secret algorithm to generate beautiful new colors.



4289298043



4292581523



4289303675



4283714636



4287891968



4279501056

Inverse Universe

The Inverse Universe completely reimagines the original color for something new.



4286293673



4287879131



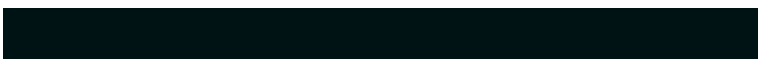
4286288041



4283192404



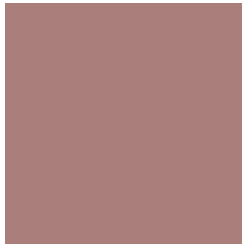
4278225556



4278194964

Previews

White Background



This preview shows how the Android color 4289298043 looks on a white background.

Color Contrast Check

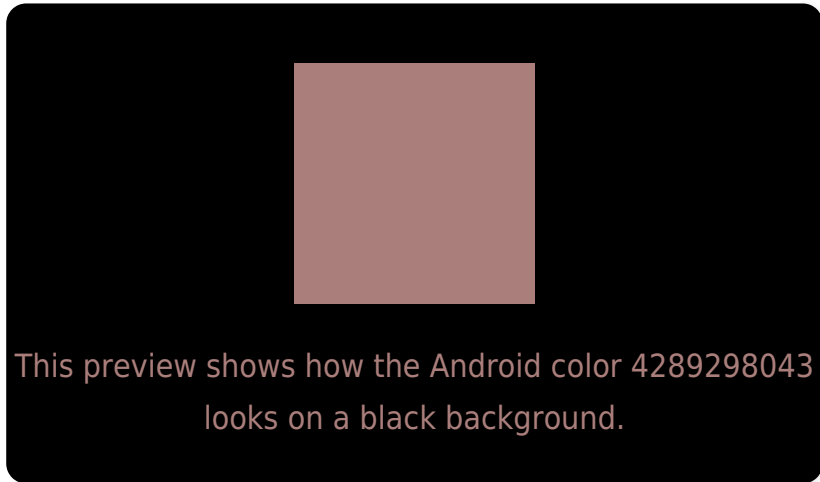
Large Text (above 18pt) WCAG AA ✓ Pass

Any Text WCAG AA ✗ Fail

Large Text (above 18pt) WCAG AAA ✗ Fail

Any Text WCAG AAA ✗ Fail

Black Background



Color Contrast Check

Large Text (above 18pt) WCAG AA ✓ Pass

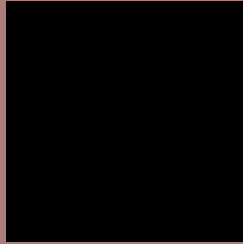
Any Text WCAG AA ✓ Pass

Large Text (above 18pt) WCAG AAA ✓ Pass

Any Text WCAG AAA × Fail

If you want to check with other color combinations, try the [Color Contrast Checker](#).

Android 4289298043 Background



This preview shows how black text looks on a background with the Android color 4289298043.



This preview shows how white text looks on a background with the Android color 4289298043.

Color Blindness Simulation

Color vision deficiency is a very complex topic, and I could not describe the different causes any better than Wikipedia does, so if you want to learn more, you should check out their [article about color blindness](#).

Dichromacy



Original Color

4289298043

Protanopia

4287465600

Deuteranopia

4288382074

Trichromacy



Original Color
4289298043

Protanomaly
4288119934

Deuteranomaly
4288709242

Tritanomaly
4289363330

Monochromacy



Original Color
4289298043

Achromatopsia
4287335307

Achromatomaly
4288054917

CSS Examples

Text

The CSS property to change the color of the text to Android 4289298043 is called "color". The color property can be set on classes, ids or directly on the HTML element.

This example shows how text in the color `rgb(169, 126, 123)` looks like.

```
.text, #text, p{  
    color:rgb(169, 126, 123)  
}
```

If you want to add a text shadow in that color use the text-shadow property, you can generate a text shadow directly with our [CSS Text Shadow Generator](#).

Here you see how black text with a 4 pixel rgb(169, 126, 123) colored shadow looks like.

```
.shadow{ text-shadow: 4px 4px 2px rgb(169, 126, 123) }
```

Border

The CSS property to change the border of an element to Android 4289298043 is called "border". The border property can be set on classes, ids or directly on the HTML element.

This example shows the color as border, it can be applied via the CSS property "border" or "border-color".

```
.border, #border, table{ border:4px solid rgb(169, 126, 123) }
```

If only the border color should be changed use the property `border-color`.

```
.border{ border-color:rgb(169, 126, 123) }
```

If you want to add a box shadow in that color use:

Here you see how a box with a 4 pixel `rgb(169, 126, 123)` colored shadow looks like.

```
.boxshadow{ -moz-box-shadow:4px 4px 4px  
4px rgb(169, 126, 123); -webkit-box-  
shadow:4px 4px 4px 4px rgb(169, 126, 123);  
box-shadow:4px 4px 4px 4px rgb(169, 126,  
123) }
```

Background

The CSS property to change the background color of an element to Android 4289298043 is called "background". The background property can be set on classes, ids or directly on the HTML element.

```
.background, #background, body{  
background: rgb(169, 126, 123) }
```

If only the background color should be changed can be used:

```
.background{ background-color: rgb(169,  
126, 123) }
```

This example shows the color as background, it is applied via the CSS property "background".

To optimize and compress your CSS code, you can use our [online CSS compressor and optimizer](#) based on csstidy. If you want to create a linear or radial gradient as background or border, check our [CSS Gradient Generator](#).

Hey! You found this booklet interesting? Support Converting Colors with the new Membership Option!

The pro membership hides all ads, plus gives you double the colors in the color bucket, and more awesome pro features!

[Learn more, Memberships starting at \\$2.50/m!](#)

**Follow me
on Twitter!**

@ConvertingColor