

Converting Colors

Android(4289300362)

Have a look what the booklet for
Android(4289300362) contains.

Android(4289300362)	3
<i>Conversions</i>	4
<i>Details</i>	6
<i>Harmonies</i>	11
<i>Previews</i>	23
<i>Color Blindness Simulation</i>	26
<i>CSS Examples</i>	29

Color

Android(4289300362)

Conversions

Conversions Part 1

Format	Color
Hex	A9878A
RGB	169, 135, 138
RGB Percent	66%, 53%, 54%
CMY	0.3373, 0.4706, 0.4588
CMYK	0.00, 0.20, 0.18, 0.34
HSL	355°, 17%, 60%
HSV	355°, 20%, 66%
XYZ	29.6136, 27.5979, 27.8109
YIQ	145.5080, 19.3010, 8.1410

Conversions

Conversions Part 2

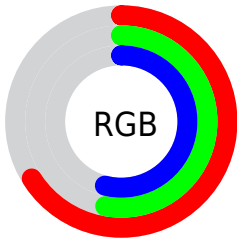
Format	Color
R_{YB}	169, 135, 138
Decimal	11110282
CIE _{Lab}	59.52, 13.43, 3.32
CIE _{LCh}	60, 13.835, 13.873
Yxy	27.5979, 0.3483, 0.3246
Android (android.graphics.Color)	4289300362 (0xFFA9878A)
YUV	145.5080, -3.7014, 20.6025
Hunter-Lab	52.5337, 8.6875, 5.3860

Details

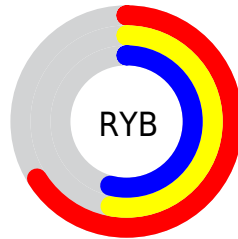
The Android color `4289300362` is a dark color, and the websafe version is hex `CC9999`. A complement of this color would be `4287080870`, and the grayscale version is `4287795858`.

A 20% lighter version of the original color is `4292983999`, and `4285814104` is the 20% darker color. If you saturate the color by 10%, you get `4289295995`, and if you desaturate by 10%, it is `4289304729`.

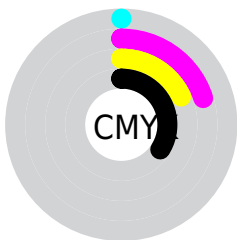
Distribution



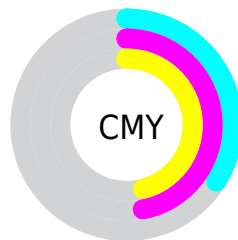
- Red (66%)
- Green (53%)
- Blue (54%)



- Red (66%)
- Yellow (53%)
- Blue (54%)



- Cyan (0%)
- Magenta (20%)
- Yellow (18%)
- Black (34%)



- Cyan (34%)
- Magenta (47%)
- Yellow (46%)

Brightness & Saturation Gradients

These gradients show how the Android color 4289300362 changes by changing the brightness by 10 percent. The first figure shows a shift by +10% for each color and the second figure -10%.

Similar to the brightness gradients but the following saturation gradients show a change of the Android color 4289300362 by changing the saturation by 10% instead.



4289300362



4289300362

4294967295



4287524465



4292983999



4285814104



4294826203



4284169793



4294964728



4282591275



4281078551



4279762945



4278190080



4289300362



4289300362



4289295995



4289304729

 4289291627

 4289309097

 4289287260

 4289313464

 4289282892

 4289317832

 4289278525

 4289321943

 4289274414

 4289326310

 4289270046

 4289330678

 4289265679

 4289331199

Harmonies

Analogous

The Analogous color harmony consists of three colors that are next to each other on the color wheel.



4288972950



4289300362



4289169791

Triad

The Triadic color harmony groups three colors that are evenly spaced from another and form a triangle on the color wheel.



4289300362



4286944382



4286223014

Complementary

The Complementary color scheme is a pair of colors which are on the opposite of each other on the color wheel.



4289300362



4287080870

Split Complementary

Split-complementary colors differ from the complementary color scheme. The scheme consists of three colors, the original color and two neighbors of the complement color.



4285633952



4289300362



4286092936

Square

The Square scheme is like the rectangle color scheme, but the four colors are evenly spaced on the color wheel.



4289300362



4287860856



4285568661



4287205031

Rectangle

The Rectangle color scheme consists of four colors that form a rectangle on the color wheel.



4289300362



4288842618



4285568661



4285961125

Sweetspot

The Sweet Spot groups the original color and five complimentary colors.



4289300362



4292595407



4289103785



4285425255



4293783021



4285427310

Same Dimension

The Same Dimension uses a secret algorithm to generate beautiful new colors.



4289300362



4292585387



4289303943



4283714636



4287889421



4279500802

Inverse Universe

The Inverse Universe completely reimagines the original color for something new.



4289300362



4292585387



4287077289



4283714636



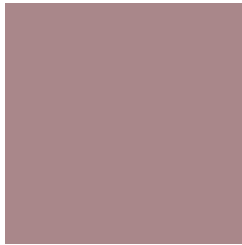
4287889421



4279500802

Previews

White Background



This preview shows how the Android color 4289300362 looks on a white background.

Color Contrast Check

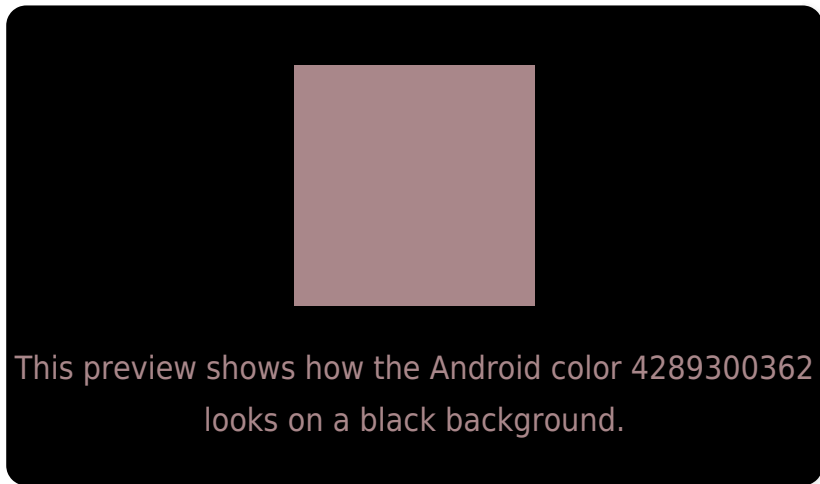
Large Text (above 18pt) WCAG AA ✓ Pass

Any Text WCAG AA ✗ Fail

Large Text (above 18pt) WCAG AAA ✗ Fail

Any Text WCAG AAA ✗ Fail

Black Background



Color Contrast Check

Large Text (above 18pt) WCAG AA ✓ Pass

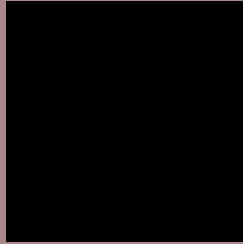
Any Text WCAG AA ✓ Pass

Large Text (above 18pt) WCAG AAA ✓ Pass

Any Text WCAG AAA × Fail

If you want to check with other color combinations, try the [Color Contrast Checker](#).

Android 4289300362 Background



This preview shows how black text looks on a background with the Android color 4289300362.



This preview shows how white text looks on a background with the Android color 4289300362.

Color Blindness Simulation

Color vision deficiency is a very complex topic, and I could not describe the different causes any better than Wikipedia does, so if you want to learn more, you should check out their [article about color blindness](#).


Dichromacy



Original Color
4289300362

Protanopia
4287795086

Deuteranopia
4288711561



Tritanopia
4289365648

Trichromacy



Original Color
4289300362

Protanomaly
4288318605

Deuteranomaly
4288907913

Tritanomaly
4289365646

Monochromacy



Original Color
4289300362

Achromatopsia
4287795858

Achromatomaly
4288319119

CSS Examples

Text

The CSS property to change the color of the text to Android 4289300362 is called "color". The color property can be set on classes, ids or directly on the HTML element.

This example shows how text in the color `rgb(169, 135, 138)` looks like.

```
.text, #text, p{  
    color:rgb(169, 135, 138)  
}
```

If you want to add a text shadow in that color use the text-shadow property, you can generate a text shadow directly with our [CSS Text Shadow Generator](#).

Here you see how black text with a 4 pixel rgb(169, 135, 138) colored shadow looks like.

```
.shadow{ text-shadow: 4px 4px 2px rgb(169, 135, 138) }
```

Border

The CSS property to change the border of an element to Android 4289300362 is called "border". The border property can be set on classes, ids or directly on the HTML element.

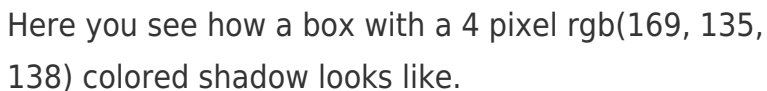
This example shows the color as border, it can be applied via the CSS property "border" or "border-color".

```
.border, #border, table{ border:4px solid rgb(169, 135, 138) }
```

If only the border color should be changed use the property `border-color`.

```
.border{ border-color:rgb(169, 135, 138) }
```

If you want to add a box shadow in that color use:



Here you see how a box with a 4 pixel `rgb(169, 135, 138)` colored shadow looks like.

```
.boxshadow{ -moz-box-shadow:4px 4px 4px 4px rgb(169, 135, 138); -webkit-box-shadow:4px 4px 4px 4px rgb(169, 135, 138); box-shadow:4px 4px 4px 4px rgb(169, 135, 138) }
```

Background

The CSS property to change the background color of an element to Android 4289300362 is called "background". The background property can be set on classes, ids or directly on the HTML element.

```
.background, #background, body{  
background: rgb(169, 135, 138) }
```

If only the background color should be changed can be used:

```
.background{ background-color: rgb(169,  
135, 138) }
```

This example shows the color as background, it is applied via the CSS property "background".

To optimize and compress your CSS code, you can use our [online CSS compressor and optimizer](#) based on csstidy. If you want to create a linear or radial gradient as background or border, check our [CSS Gradient Generator](#).

Hey! You found this booklet interesting? Support Converting Colors with the new Membership Option!

The pro membership hides all ads, plus gives you double the colors in the color bucket, and more awesome pro features!

[Learn more, Memberships starting at \\$2.50/m!](#)

**Follow me
on Twitter!**

@ConvertingColor