

# Converting Colors

Android(4289302392)

Have a look what the booklet for  
Android(4289302392) contains.

<b>Android(4289302392)</b> .....	3
<b><i>Conversions</i></b> .....	4
<b><i>Details</i></b> .....	6
<b><i>Harmonies</i></b> .....	11
<b><i>Previews</i></b> .....	23
<b><i>Color Blindness Simulation</i></b> .....	26
<b><i>CSS Examples</i></b> .....	29

# Color

**Android(4289302392)**

# Conversions

## Conversions Part 1

<b>Format</b>	<b>Color</b>
Hex	A98F78
RGB	169, 143, 120
RGB Percent	66%, 56%, 47%
CMY	0.3373, 0.4392, 0.5294
CMYK	0.00, 0.15, 0.29, 0.34
HSL	28°, 22%, 57%
HSV	28°, 29%, 66%
XYZ	29.5748, 29.4360, 21.8923
YIQ	148.1520, 22.8790, -1.6410

# Conversions

## Conversions Part 2

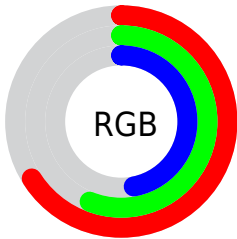
<b>Format</b>	<b>Color</b>
<b>RYB</b>	169, 163, 120
Decimal	11112312
CIELab	61.16, 6.21, 15.87
CIELCh	61, 17.047, 68.633
Yxy	29.4360, 0.3656, 0.3638
Android (android.graphics.Color)	4289302392 (0xFFA98F78)
YUV	148.1520, -13.8789, 18.2837
Hunter-Lab	54.2550, 2.3556, 14.0545

# Details

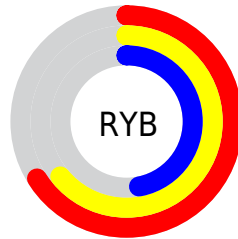
The Android color `4289302392` is a dark color, and the websafe version is hex `CC9999`. A complement of this color would be `4286091945`, and the grayscale version is `4287927444`.

A 20% lighter version of the original color is `4292986284`, and `4285816135` is the 20% darker color. If you saturate the color by 10%, you get `4289300071`, and if you desaturate by 10%, it is `4289304713`.

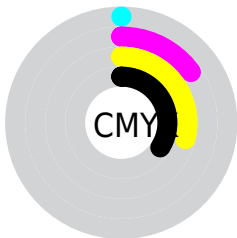
# Distribution



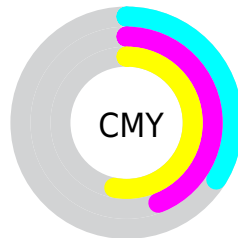
- Red (66%)
- Green (56%)
- Blue (47%)



- Red (66%)
- Yellow (64%)
- Blue (47%)



- Cyan (0%)
- Magenta (15%)
- Yellow (29%)
- Black (34%)



- Cyan (34%)
- Magenta (44%)
- Yellow (53%)

# Brightness & Saturation Gradients

These gradients show how the Android color 4289302392 changes by changing the brightness by 10 percent. The first figure shows a shift by +10% for each color and the second figure -10%.

Similar to the brightness gradients but the following saturation gradients show a change of the Android color 4289302392 by changing the saturation by 10% instead.





4289302392



4289302392

4294967295



4287526239



4292986284



4285816135



4294894024



4284171569



4294966756



4282593052



4281080322



4279500800



4278190080



4289302392



4289302392



4289300071



4289304713

 4289297750

 4289307034

 4289295429

 4289309355

 4289293108

 4289311676

 4289290787

 4289313996

 4289288467

 4289316317

 4289286146

 4289318638

 4289285888

 4289320959

 4289323263

# Harmonies

## Analogous

The Analogous color harmony consists of three colors that are next to each other on the color wheel.



4289891201



4289302392



4288386166

# Triad

The Triadic color harmony groups three colors that are evenly spaced from another and form a triangle on the color wheel.



4289302392



4285373592



4288450219

# Complementary

The Complementary color scheme is a pair of colors which are on the opposite of each other on the color wheel.



4289302392



4286091945

# Split Complementary

Split-complementary colors differ from the complementary color scheme. The scheme consists of three colors, the original color and two neighbors of the complement color.



4287140785



4289302392



4285242278

# Square

The Square scheme is like the rectangle color scheme, but the four colors are evenly spaced on the color wheel.



4289302392



4286159752



4285962415



4289432223

# Rectangle

The Rectangle color scheme consists of four colors that form a rectangle on the color wheel.



4289302392



4287666041



4285962415



4287991982



# Sweetspot

The Sweet Spot groups the original color and five complimentary colors.



4289302392



4292596168



4289296530



4285425506



4293783021



4285427310



# Same Dimension

The Same Dimension uses a secret algorithm to generate beautiful new colors.



4289302392



4292588431



4289308536



4283715660



4287907072



4279503360



# Inverse Universe

The Inverse Universe completely reimagines the original color for something new.



4286091945



4287608795



4286085801



4283191380



4278210196

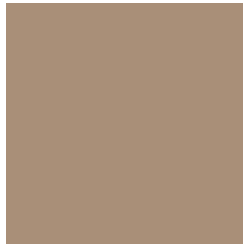


4278192916



# Previews

## White Background



This preview shows how the Android color 4289302392 looks on a white background.

## Color Contrast Check

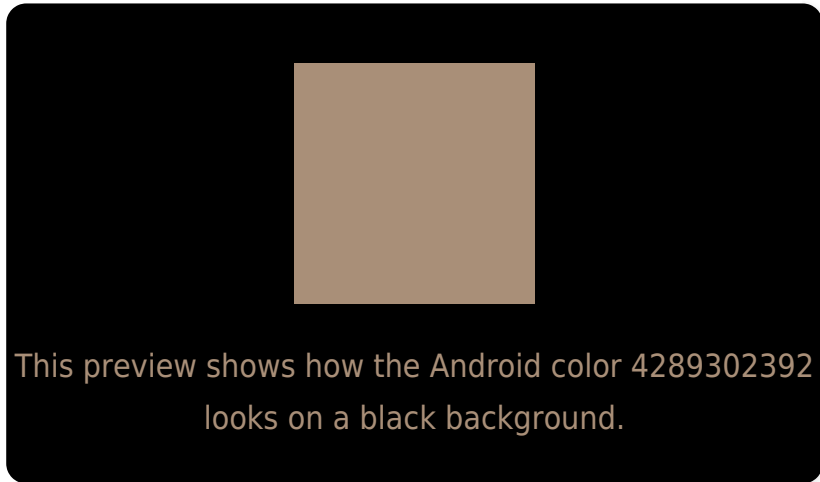
Large Text (above 18pt) WCAG AA ✓ Pass

Any Text WCAG AA ✗ Fail

Large Text (above 18pt) WCAG AAA ✗ Fail

Any Text WCAG AAA ✗ Fail

# Black Background



## Color Contrast Check

Large Text (above 18pt) WCAG AA ✓ Pass

Any Text WCAG AA ✓ Pass

Large Text (above 18pt) WCAG AAA ✓ Pass

Any Text WCAG AAA × Fail

If you want to check with other color combinations, try the [Color Contrast Checker](#).



# Android 4289302392 Background



This preview shows how black text looks on a background with the Android color 4289302392.



This preview shows how white text looks on a background with the Android color 4289302392.

# Color Blindness Simulation

Color vision deficiency is a very complex topic, and I could not describe the different causes any better than Wikipedia does, so if you want to learn more, you should check out their [article about color blindness](#).


## Dichromacy



**Original Color**  
4289302392

**Protanopia**  
4288451450

**Deuteranopia**  
4289498744



**Tritanopia**  
4289498006

# Trichromacy



**Original Color**  
4289302392

**Protanomaly**  
4288778873

**Deuteranomaly**  
4289433208

**Tritanomaly**  
4289432715

# Monochromacy



**Original Color**  
4289302392

**Achromatopsia**  
4287927444

**Achromatomaly**  
4288451210

# CSS Examples

## Text

The CSS property to change the color of the text to Android 4289302392 is called "color". The color property can be set on classes, ids or directly on the HTML element.

This example shows how text in the color `rgb(169, 143, 120)` looks like.

```
.text, #text, p{  
    color:rgb(169, 143, 120)  
}
```

If you want to add a text shadow in that color use the text-shadow property, you can generate a text shadow directly with our [CSS Text Shadow Generator](#).

Here you see how black text with a 4 pixel rgb(169, 143, 120) colored shadow looks like.

```
.shadow{ text-shadow: 4px 4px 2px rgb(169, 143, 120) }
```

## Border

The CSS property to change the border of an element to Android 4289302392 is called "border". The border property can be set on classes, ids or directly on the HTML element.

This example shows the color as border, it can be applied via the CSS property "border" or "border-color".

```
.border, #border, table{ border:4px solid rgb(169, 143, 120) }
```

If only the border color should be changed use the property `border-color`.

```
.border{ border-color:rgb(169, 143, 120) }
```

If you want to add a box shadow in that color use:

Here you see how a box with a 4 pixel `rgb(169, 143, 120)` colored shadow looks like.

```
.boxshadow{ -moz-box-shadow:4px 4px 4px  
4px rgb(169, 143, 120); -webkit-box-  
shadow:4px 4px 4px 4px rgb(169, 143, 120);  
box-shadow:4px 4px 4px 4px rgb(169, 143,  
120) }
```

# Background

The CSS property to change the background color of an element to Android 4289302392 is called "background". The background property can be set on classes, ids or directly on the HTML element.

```
.background, #background, body{  
background: rgb(169, 143, 120) }
```

If only the background color should be changed can be used:

```
.background{ background-color: rgb(169,  
143, 120) }
```

This example shows the color as background, it is applied via the CSS property "background".

To optimize and compress your CSS code, you can use our [online CSS compressor and optimizer](#) based on csstidy. If you want to create a linear or radial gradient as background or border, check our [CSS Gradient Generator](#).



Hey! You found this booklet interesting? Support Converting Colors with the new Membership Option!

The pro membership hides all ads, plus gives you double the colors in the color bucket, and more awesome pro features!

**[Learn more, Memberships starting at \\$2.50/m!](#)**

**Follow me  
on Twitter!**

@ConvertingColor