

Converting Colors

Android(4289349453)

Have a look what the booklet for
Android(4289349453) contains.

Android(4289349453)	3
<i>Conversions</i>	4
<i>Details</i>	6
<i>Harmonies</i>	11
<i>Previews</i>	23
<i>Color Blindness Simulation</i>	26
<i>CSS Examples</i>	29

Color

Android(4289349453)

Conversions

Conversions Part 1

Format	Color
Hex	AA474D
RGB	170, 71, 77
RGB Percent	67%, 28%, 30%
CMY	0.3333, 0.7216, 0.6980
CMYK	0.00, 0.58, 0.55, 0.33
HSL	356°, 41%, 47%
HSV	356°, 58%, 67%
XYZ	20.1704, 13.5883, 8.5809
YIQ	101.2850, 57.0780, 22.8540

Conversions

Conversions Part 2

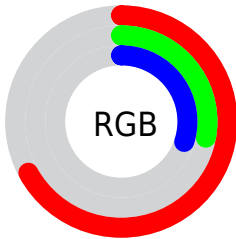
Format	Color
R_{YB}	170, 71, 77
Decimal	11159373
CIE _{Lab}	43.64, 41.18, 17.07
CIE _{LCh}	44, 44.582, 22.519
Yxy	13.5883, 0.4764, 0.3209
Android (android.graphics.Color)	4289349453 (0xFFAA474D)
YUV	101.2850, -11.9725, 60.2631
Hunter-Lab	36.8624, 33.1625, 12.0020

Details

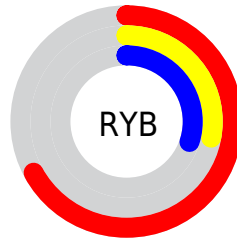
The Android color **4289349453** is a dark color, and the websafe version is hex **993333**. A complement of this color would be **4282886820**, and the grayscale version is **4284835173**.

A 20% lighter version of the original color is **4293229438**, and **4285599777** is the 20% darker color. If you saturate the color by 10%, you get **4289345085**, and if you desaturate by 10%, it is **4289353821**.

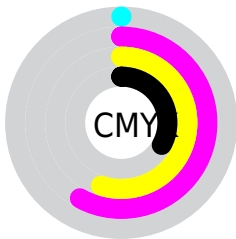
Distribution



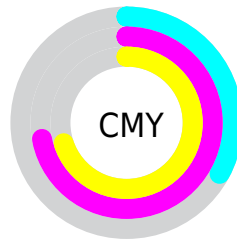
- Red (67%)
- Green (28%)
- Blue (30%)



- Red (67%)
- Yellow (28%)
- Blue (30%)



- Cyan (0%)
- Magenta (58%)
- Yellow (55%)
- Black (33%)



- Cyan (33%)
- Magenta (72%)
- Yellow (70%)

Brightness & Saturation Gradients

These gradients show how the Android color 4289349453 changes by changing the brightness by 10 percent. The first figure shows a shift by +10% for each color and the second figure -10%.

Similar to the brightness gradients but the following saturation gradients show a change of the Android color 4289349453 by changing the saturation by 10% instead.



4289349453



4289349453

4294967295



4287442230



4293229438



4285599777



4294940312



4283760651



4294947250



4281991168



4294954446



4279959553



4294961898



4278190080



4289349453



4289349453



4289345085



4289353821



4289340717



4289358189

 4289336349

 4289362557

 4289331981

 4289366925

 4289331210

 4289371293

 4289375661

 4289380029

 4289384397

 4289388765

Harmonies

Analogous

The Analogous color harmony consists of three colors that are next to each other on the color wheel.



4289021554



4289349453



4288500525

Triad

The Triadic color harmony groups three colors that are evenly spaced from another and form a triangle on the color wheel.



4289349453



4281365816



4278218416

Complementary

The Complementary color scheme is a pair of colors which are on the opposite of each other on the color wheel.



4289349453



4282886820

Split Complementary

Split-complementary colors differ from the complementary color scheme. The scheme consists of three colors, the original color and two neighbors of the complement color.



4278220449



4289349453



4278220892

Square

The Square scheme is like the rectangle color scheme, but the four colors are evenly spaced on the color wheel.



4289349453



4284509468



4278221186



4283916716

Rectangle

The Rectangle color scheme consists of four colors that form a rectangle on the color wheel.



4289349453



4287388957



4278221186



4278219181

Sweetspot

The Sweet Spot groups the original color and five complimentary colors.



4289349453



4292786362



4288890794



4285553243



4293980400



4285558896

Same Dimension

The Same Dimension uses a secret algorithm to generate beautiful new colors.



4289349453



4292756300



4289360455



4283714636



4287889417



4279500801

Inverse Universe

The Inverse Universe completely reimagines the original color for something new.



4289349453



4292756300



4282875818



4283714636



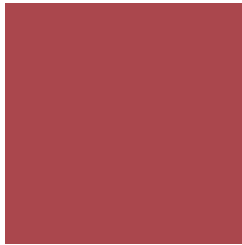
4287889417



4279500801

Previews

White Background



This preview shows how the Android color 4289349453 looks on a white background.

Color Contrast Check

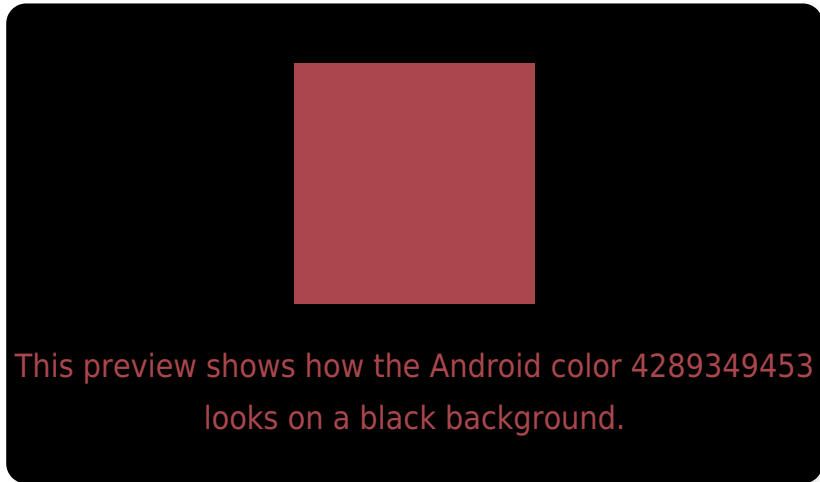
Large Text (above 18pt) WCAG AA ✓ Pass

Any Text WCAG AA ✓ Pass

Large Text (above 18pt) WCAG AAA ✓ Pass

Any Text WCAG AAA × Fail

Black Background



Color Contrast Check

Large Text (above 18pt) WCAG AA ✓ Pass

Any Text WCAG AA × Fail

Large Text (above 18pt) WCAG AAA × Fail

Any Text WCAG AAA × Fail

If you want to check with other color combinations, try the [Color Contrast Checker](#).

Android 4289349453 Background



This preview shows how black text looks on a background with the Android color 4289349453.



This preview shows how white text looks on a background with the Android color 4289349453.

Color Blindness Simulation

Color vision deficiency is a very complex topic, and I could not describe the different causes any better than Wikipedia does, so if you want to learn more, you should check out their [article about color blindness](#).

Dichromacy



Original Color
4289349453

Protanopia
4285294428

Deuteranopia
4286341960

Trichromacy



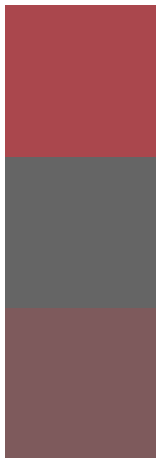
Original Color
4289349453

Protanomaly
4286798679

Deuteranomaly
4287453514

Tritanomaly
4289349452

Monochromacy



Original Color
4289349453

Achromatopsia
4284835173

Achromatomaly
4286470748

CSS Examples

Text

The CSS property to change the color of the text to Android 4289349453 is called "color". The color property can be set on classes, ids or directly on the HTML element.

This example shows how text in the color `rgb(170, 71, 77)` looks like.

```
.text, #text, p{  
    color:rgb(170, 71, 77)  
}
```

If you want to add a text shadow in that color use the text-shadow property, you can generate a text shadow directly with our [CSS Text Shadow Generator](#).

Here you see how black text with a 4 pixel rgb(170, 71, 77) colored shadow looks like.

```
.shadow{ text-shadow: 4px 4px 2px rgb(170, 71, 77) }
```

Border

The CSS property to change the border of an element to Android 4289349453 is called "border". The border property can be set on classes, ids or directly on the HTML element.

This example shows the color as border, it can be applied via the CSS property "border" or "border-color".

```
.border, #border, table{ border:4px solid rgb(170, 71, 77) }
```

If only the border color should be changed use the property border-color.

```
.border{ border-color:rgb(170, 71, 77) }
```

If you want to add a box shadow in that color use:

Here you see how a box with a 4 pixel rgb(170, 71, 77) colored shadow looks like.

```
.boxshadow{ -moz-box-shadow:4px 4px 4px  
4px rgb(170, 71, 77); -webkit-box-  
shadow:4px 4px 4px 4px rgb(170, 71, 77);  
box-shadow:4px 4px 4px 4px rgb(170, 71,  
77) }
```

Background

The CSS property to change the background color of an element to Android 4289349453 is called "background". The background property can be set on classes, ids or directly on the HTML element.

```
.background, #background, body{  
background: rgb(170, 71, 77) }
```

If only the background color should be changed can be used:

```
.background{ background-color: rgb(170, 71,  
77) }
```

This example shows the color as background, it is applied via the CSS property "background".

To optimize and compress your CSS code, you can use our [online CSS compressor and optimizer](#) based on csstidy. If you want to create a linear or radial gradient as background or border, check our [CSS Gradient Generator](#).

Hey! You found this booklet
interesting? Support Converting
Colors with the new Membership
Option!

The pro membership hides all ads, plus gives you
double the colors in the color bucket, and more
awesome pro features!

[Learn more, Memberships starting at \\$2.50/m!](#)

**Follow me
on Twitter!**

@ConvertingColor