

Converting Colors

Android(4289353045)

Have a look what the booklet for
Android(4289353045) contains.

Android(4289353045)	3
<i>Conversions</i>	4
<i>Details</i>	6
<i>Harmonies</i>	11
<i>Previews</i>	23
<i>Color Blindness Simulation</i>	26
<i>CSS Examples</i>	29

Color

Android(4289353045)

Conversions

Conversions Part 1

Format	Color
Hex	AA5555
RGB	170, 85, 85
RGB Percent	67%, 33%, 33%
CMY	0.3333, 0.6667, 0.6667
CMYK	0.00, 0.50, 0.50, 0.33
HSL	0°, 33%, 50%
HSV	0°, 50%, 67%
XYZ	21.4658, 15.6989, 10.4932
YIQ	110.4150, 50.6600, 18.0200

Conversions

Conversions Part 2

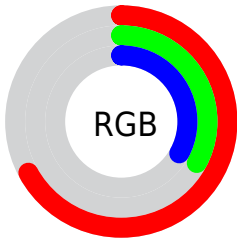
Format	Color
R _Y B	170, 85, 85
Decimal	11162965
CIE Lab	46.58, 34.76, 16.20
CIE LCh	47, 38.349, 24.982
Yxy	15.6989, 0.4504, 0.3294
Android (android.graphics.Color)	4289353045 (0xFFAA5555)
YUV	110.4150, -12.5296, 52.2560
Hunter-Lab	39.6219, 27.3669, 12.0334

Details

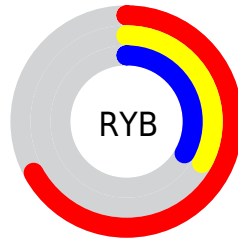
The Android color **4289353045** is a dark color, and the websafe version is hex **CC6666**. A complement of this color would be **4283804330**, and the grayscale version is **4285493103**.

A 20% lighter version of the original color is **4293167495**, and **4285670184** is the 20% darker color. If you saturate the color by 10%, you get **4289348676**, and if you desaturate by 10%, it is **4289357414**.

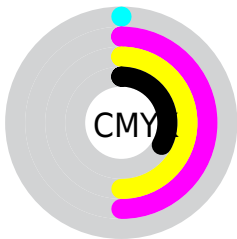
Distribution



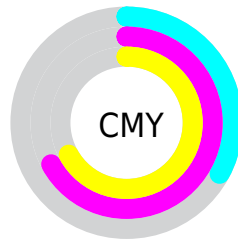
- Red (67%)
- Green (33%)
- Blue (33%)



- Red (67%)
- Yellow (33%)
- Blue (33%)



- Cyan (0%)
- Magenta (50%)
- Yellow (50%)
- Black (33%)



- Cyan (33%)
- Magenta (67%)
- Yellow (67%)

Brightness & Saturation Gradients

These gradients show how the Android color 4289353045 changes by changing the brightness by 10 percent. The first figure shows a shift by +10% for each color and the second figure -10%.

Similar to the brightness gradients but the following saturation gradients show a change of the Android color 4289353045 by changing the saturation by 10% instead.



4289353045



4289353045

4294967295



4287511614



4293167495



4285670184



4294943905



4283828244



4294950844



4282122240



4294958039



4280418305



4294965492



4278190080



4289353045



4289353045



4289348676



4289357414



4289344307



4289361783

 4289339938

 4289366152

 4289335569

 4289370521

 4289331200

 4289374890

 4289379259

 4289383628

 4289387997

 4289392366

Harmonies

Analogous

The Analogous color harmony consists of three colors that are next to each other on the color wheel.



4289155957



4289353045



4288569146

Triad

The Triadic color harmony groups three colors that are evenly spaced from another and form a triangle on the color wheel.



4289353045



4282350408



4280185774

Complementary

The Complementary color scheme is a pair of colors which are on the opposite of each other on the color wheel.



4289353045



4283804330

Split Complementary

Split-complementary colors differ from the complementary color scheme. The scheme consists of three colors, the original color and two neighbors of the complement color.



4278221730



4289353045



4278222440

Square

The Square scheme is like the rectangle color scheme, but the four colors are evenly spaced on the color wheel.



4289353045



4284904753



4278222473



4285032617

Rectangle

The Rectangle color scheme consists of four colors that form a rectangle on the color wheel.



4289353045



4287588143



4278222473



4278220460

Sweetspot

The Sweet Spot groups the original color and five complimentary colors.



4289353045



4292787645



4289353130



4285553756



4293980400



4285558896

Same Dimension

The Same Dimension uses a secret algorithm to generate beautiful new colors.



4289353045



4292761945



4289363797



4283714636



4287889408



4279500800

Inverse Universe

The Inverse Universe completely reimagines the original color for something new.



4283804330



4284079838



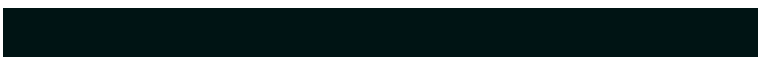
4283793322



4283192404



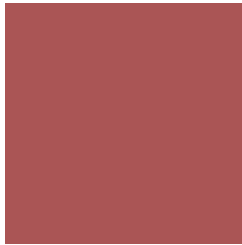
4278228116



4278195220

Previews

White Background



This preview shows how the Android color 4289353045 looks on a white background.

Color Contrast Check

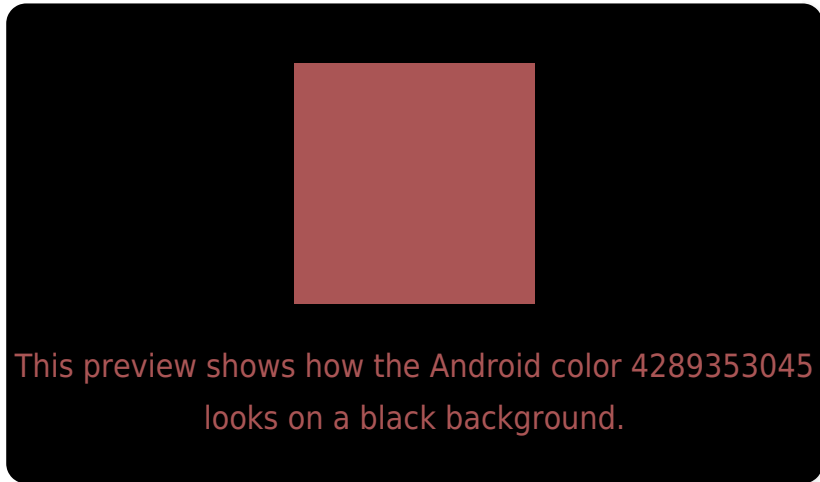
Large Text (above 18pt) WCAG AA ✓ Pass

Any Text WCAG AA ✓ Pass

Large Text (above 18pt) WCAG AAA ✓ Pass

Any Text WCAG AAA × Fail

Black Background



Color Contrast Check

Large Text (above 18pt) WCAG AA ✓ Pass

Any Text WCAG AA × Fail

Large Text (above 18pt) WCAG AAA × Fail

Any Text WCAG AAA × Fail

If you want to check with other color combinations, try the [Color Contrast Checker](#).

Android 4289353045 Background



This preview shows how black text looks on a background with the Android color 4289353045.

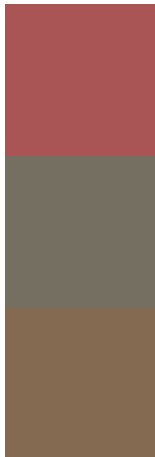


This preview shows how white text looks on a background with the Android color 4289353045.

Color Blindness Simulation

Color vision deficiency is a very complex topic, and I could not describe the different causes any better than Wikipedia does, so if you want to learn more, you should check out their [article about color blindness](#).

Dichromacy



Original Color
4289353045

Protanopia
4285820769

Deuteranopia
4286802513

Trichromacy



Original Color
4289353045

Protanomaly
4287129181

Deuteranomaly
4287717970

Tritanomaly
4289352792

Monochromacy



Original Color
4289353045

Achromatopsia
4285427310

Achromatomaly
4286866789

CSS Examples

Text

The CSS property to change the color of the text to Android 4289353045 is called "color". The color property can be set on classes, ids or directly on the HTML element.

This example shows how text in the color `rgb(170, 85, 85)` looks like.

```
.text, #text, p{  
    color:rgb(170, 85, 85)  
}
```

If you want to add a text shadow in that color use the text-shadow property, you can generate a text shadow directly with our [CSS Text Shadow Generator](#).

Here you see how black text with a 4 pixel rgb(170, 85, 85) colored shadow looks like.

```
.shadow{ text-shadow: 4px 4px 2px rgb(170, 85, 85) }
```

Border

The CSS property to change the border of an element to Android 4289353045 is called "border". The border property can be set on classes, ids or directly on the HTML element.

This example shows the color as border, it can be applied via the CSS property "border" or "border-color".

```
.border, #border, table{ border:4px solid rgb(170, 85, 85) }
```

If only the border color should be changed use the property `border-color`.

```
.border{ border-color:rgb(170, 85, 85) }
```

If you want to add a box shadow in that color use:

Here you see how a box with a 4 pixel `rgb(170, 85, 85)` colored shadow looks like.

```
.boxshadow{ -moz-box-shadow:4px 4px 4px  
4px rgb(170, 85, 85); -webkit-box-  
shadow:4px 4px 4px 4px rgb(170, 85, 85);  
box-shadow:4px 4px 4px 4px rgb(170, 85,  
85) }
```

Background

The CSS property to change the background color of an element to Android 4289353045 is called "background". The background property can be set on classes, ids or directly on the HTML element.

```
.background, #background, body{  
background: rgb(170, 85, 85) }
```

If only the background color should be changed can be used:

```
.background{ background-color: rgb(170, 85,  
85) }
```

This example shows the color as background, it is applied via the CSS property "background".

To optimize and compress your CSS code, you can use our [online CSS compressor and optimizer](#) based on csstidy. If you want to create a linear or radial gradient as background or border, check our [CSS Gradient Generator](#).

Hey! You found this booklet
interesting? Support Converting
Colors with the new Membership
Option!

The pro membership hides all ads, plus gives you
double the colors in the color bucket, and more
awesome pro features!

[Learn more, Memberships starting at \\$2.50/m!](#)

**Follow me
on Twitter!**

@ConvertingColor