

Converting Colors

Android(4289358179)

Have a look what the booklet for
Android(4289358179) contains.

Android(4289358179)	3
<i>Conversions</i>	4
<i>Details</i>	6
<i>Harmonies</i>	11
<i>Previews</i>	23
<i>Color Blindness Simulation</i>	26
<i>CSS Examples</i>	29

Color

Android(4289358179)

Conversions

Conversions Part 1

Format	Color
Hex	AA6963
RGB	170, 105, 99
RGB Percent	67%, 41%, 39%
CMY	0.3333, 0.5882, 0.6118
CMYK	0.00, 0.38, 0.42, 0.33
HSL	5°, 29%, 53%
HSV	5°, 42%, 67%
XYZ	23.8813, 19.5501, 14.3192
YIQ	123.7510, 40.6660, 11.9140

Conversions

Conversions Part 2

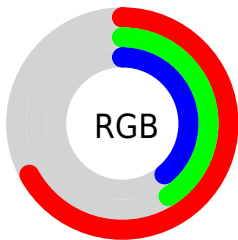
Format	Color
R_{YB}	170, 106, 99
Decimal	11168099
CIE Lab	51.32, 25.32, 14.37
CIE LCh	51, 29.109, 29.581
Yxy	19.5501, 0.4135, 0.3385
Android (android.graphics.Color)	4289358179 (0xFFAA6963)
YUV	123.7510, -12.2022, 40.5604
Hunter-Lab	44.2154, 19.0329, 11.7497

Details

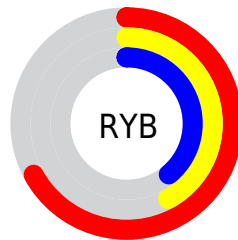
The Android color **4289358179** is a dark color, and the websafe version is hex **996666**. A complement of this color would be **4284720298**, and the grayscale version is **4286348412**.

A 20% lighter version of the original color is **4293107094**, and **4285741364** is the 20% darker color. If you saturate the color by 10%, you get **4289354066**, and if you desaturate by 10%, it is **4289362292**.

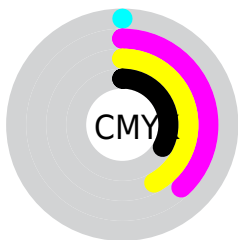
Distribution



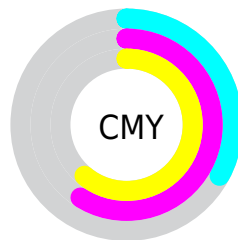
- Red (67%)
- Green (41%)
- Blue (39%)



- Red (67%)
- Yellow (42%)
- Blue (39%)



- Cyan (0%)
- Magenta (38%)
- Yellow (42%)
- Black (33%)



- Cyan (33%)
- Magenta (59%)
- Yellow (61%)

Brightness & Saturation Gradients

These gradients show how the Android color 4289358179 changes by changing the brightness by 10 percent. The first figure shows a shift by +10% for each color and the second figure -10%.

Similar to the brightness gradients but the following saturation gradients show a change of the Android color 4289358179 by changing the saturation by 10% instead.



4289358179



4289358179

4294967295



4287516747



4293107094



4285741364



4294949040



4284031519



4294956236



4282321416



4294963432



4280877056



4278190080



4289358179



4289358179



4289354066



4289362292



4289350209



4289366149

 4289346096

 4289370262

 4289342239

 4289374119

 4289338126

 4289378232

 4289334784

 4289382089

 4289386202

 4289390315

 4289394172

Harmonies

Analogous

The Analogous color harmony consists of three colors that are next to each other on the color wheel.



4289292156



4289358179



4288639056

Triad

The Triadic color harmony groups three colors that are evenly spaced from another and form a triangle on the color wheel.



4289358179



4283729248



4283858348

Complementary

The Complementary color scheme is a pair of colors which are on the opposite of each other on the color wheel.



4289358179



4284720298

Split Complementary

Split-complementary colors differ from the complementary color scheme. The scheme consists of three colors, the original color and two neighbors of the complement color.



4280976293



4289358179



4281501817

Square

The Square scheme is like the rectangle color scheme, but the four colors are evenly spaced on the color wheel.



4289358179



4285628494



4279535506



4286411941

Rectangle

The Rectangle color scheme consists of four colors that form a rectangle on the color wheel.



4289358179



4287854153



4279535506



4282875819

Sweetspot

The Sweet Spot groups the original color and five complimentary colors.



4289358179



4292789185



4289356708



4285554782



4293980400



4285558896

Same Dimension

The Same Dimension uses a secret algorithm to generate beautiful new colors.



4289358179



4292769903



4289367139



4283714636



4287892480



4279501312

Inverse Universe

The Inverse Universe completely reimagines the original color for something new.



4284720298



4285519070



4284711338



4283192148



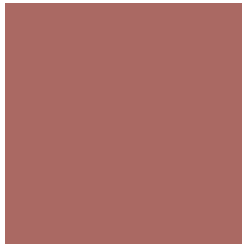
4278224788



4278194964

Previews

White Background



This preview shows how the Android color 4289358179 looks on a white background.

Color Contrast Check

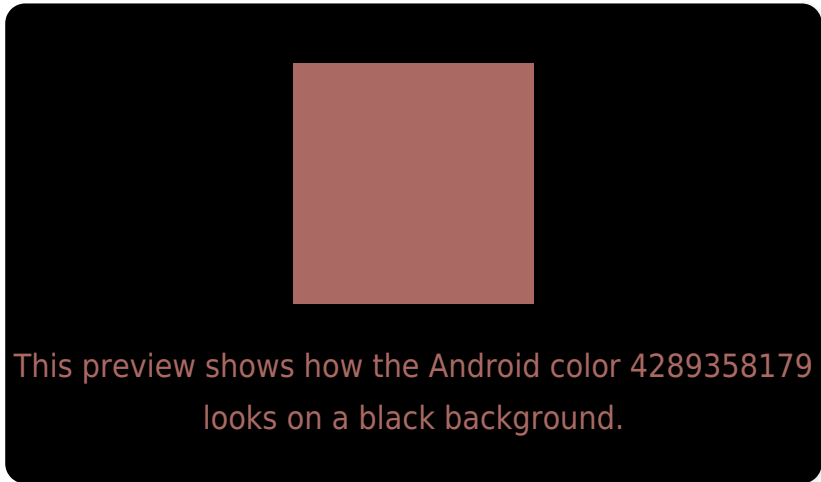
Large Text (above 18pt) WCAG AA ✓ Pass

Any Text WCAG AA ✗ Fail

Large Text (above 18pt) WCAG AAA ✗ Fail

Any Text WCAG AAA ✗ Fail

Black Background



Color Contrast Check

Large Text (above 18pt) WCAG AA ✓ Pass

Any Text WCAG AA ✓ Pass

Large Text (above 18pt) WCAG AAA ✓ Pass

Any Text WCAG AAA × Fail

If you want to check with other color combinations, try the [Color Contrast Checker](#).

Android 4289358179 Background



This preview shows how black text looks on a background with the Android color 4289358179.

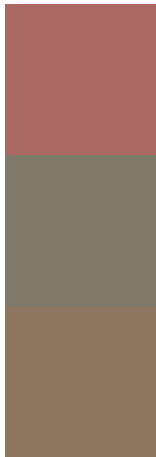


This preview shows how white text looks on a background with the Android color 4289358179.

Color Blindness Simulation

Color vision deficiency is a very complex topic, and I could not describe the different causes any better than Wikipedia does, so if you want to learn more, you should check out their [article about color blindness](#).

Dichromacy



Original Color
4289358179

Protanopia
4286610027

Deuteranopia
4287592033

Trichromacy



Original Color

4289358179

Protanomaly

4287591528

Deuteranomaly

4288246114

Tritanomaly

4289423467

Monochromacy



Original Color

4289358179

Achromatopsia

4286348412

Achromatomaly

4287460723

CSS Examples

Text

The CSS property to change the color of the text to Android 4289358179 is called "color". The color property can be set on classes, ids or directly on the HTML element.

This example shows how text in the color `rgb(170, 105, 99)` looks like.

```
.text, #text, p{  
    color:rgb(170, 105, 99)  
}
```

If you want to add a text shadow in that color use the text-shadow property, you can generate a text shadow directly with our [CSS Text Shadow Generator](#).

Here you see how black text with a 4 pixel rgb(170, 105, 99) colored shadow looks like.

```
.shadow{ text-shadow: 4px 4px 2px rgb(170, 105, 99) }
```

Border

The CSS property to change the border of an element to Android 4289358179 is called "border". The border property can be set on classes, ids or directly on the HTML element.

This example shows the color as border, it can be applied via the CSS property "border" or "border-color".

```
.border, #border, table{ border:4px solid rgb(170, 105, 99) }
```

If only the border color should be changed use the property `border-color`.

```
.border{ border-color:rgb(170, 105, 99) }
```

If you want to add a box shadow in that color use:

Here you see how a box with a 4 pixel `rgb(170, 105, 99)` colored shadow looks like.

```
.boxshadow{ -moz-box-shadow:4px 4px 4px  
4px rgb(170, 105, 99); -webkit-box-  
shadow:4px 4px 4px 4px rgb(170, 105, 99);  
box-shadow:4px 4px 4px 4px rgb(170, 105,  
99) }
```

Background

The CSS property to change the background color of an element to Android 4289358179 is called "background". The background property can be set on classes, ids or directly on the HTML element.

```
.background, #background, body{  
background: rgb(170, 105, 99) }
```

If only the background color should be changed can be used:

```
.background{ background-color: rgb(170,  
105, 99) }
```

This example shows the color as background, it is applied via the CSS property "background".

To optimize and compress your CSS code, you can use our [online CSS compressor and optimizer](#) based on csstidy. If you want to create a linear or radial gradient as background or border, check our [CSS Gradient Generator](#).

Hey! You found this booklet interesting? Support Converting Colors with the new Membership Option!

The pro membership hides all ads, plus gives you double the colors in the color bucket, and more awesome pro features!

[Learn more, Memberships starting at \\$2.50/m!](#)

**Follow me
on Twitter!**

@ConvertingColor