

Converting Colors

Android(4289363278)

Have a look what the booklet for
Android(4289363278) contains.

Android(4289363278)	3
<i>Conversions</i>	4
<i>Details</i>	6
<i>Harmonies</i>	11
<i>Previews</i>	23
<i>Color Blindness Simulation</i>	26
<i>CSS Examples</i>	29

Color

Android(4289363278)

Conversions

Conversions Part 1

Format	Color
Hex	AA7D4E
RGB	170, 125, 78
RGB Percent	67%, 49%, 31%
CMY	0.3333, 0.5098, 0.6941
CMYK	0.00, 0.26, 0.54, 0.33
HSL	31°, 37%, 49%
HSV	31°, 54%, 67%
XYZ	25.2863, 23.7633, 10.4618
YIQ	133.0970, 41.9070, -5.0770

Conversions

Conversions Part 2

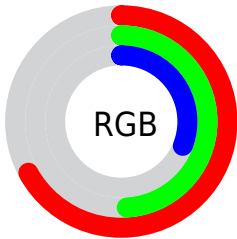
Format	Color
R_{YB}	166, 170, 78
Decimal	11173198
CIE _{Lab}	55.85, 11.88, 32.28
CIE _{LCh}	56, 34.393, 69.794
Yxy	23.7633, 0.4249, 0.3993
Android (android.graphics.Color)	4289363278 (0xFFAA7D4E)
YUV	133.0970, -27.1628, 32.3639
Hunter-Lab	48.7477, 7.2829, 21.3991

Details

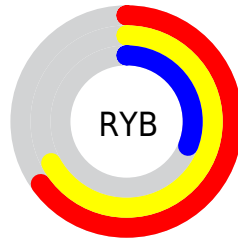
The Android color **4289363278** is a dark color, and the websafe version is hex **996633**. A complement of this color would be **4283333546**, and the grayscale version is **4286940549**.

A 20% lighter version of the original color is **4293112448**, and **4285746208** is the 20% darker color. If you saturate the color by 10%, you get **4289361213**, and if you desaturate by 10%, it is **4289365343**.

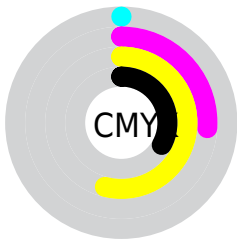
Distribution



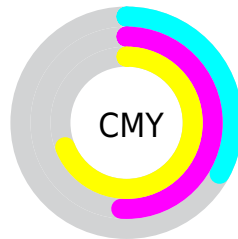
- Red (67%)
- Green (49%)
- Blue (31%)



- Red (65%)
- Yellow (67%)
- Blue (31%)



- Cyan (0%)
- Magenta (26%)
- Yellow (54%)
- Black (33%)



- Cyan (33%)
- Magenta (51%)
- Yellow (69%)

Brightness & Saturation Gradients

These gradients show how the Android color 4289363278 changes by changing the brightness by 10 percent. The first figure shows a shift by +10% for each color and the second figure -10%.

Similar to the brightness gradients but the following saturation gradients show a change of the Android color 4289363278 by changing the saturation by 10% instead.

 4289363278

 4289363278

4294967295

 4287521846

 4293112448

 4285746208

 4294954394

 4283970824

 4294961589

 4282327040

 4294967249

 4280683264

 4294967277

 4278190080

 4289363278

 4289363278

 4289361213

 4289365343

 4289358892

 4289367664

■ 4289356827

■ 4289369729

■ 4289354762

■ 4289371794

■ 4289353472

■ 4289374115

■ 4289376180

■ 4289378245

■ 4289380566

■ 4289382631

Harmonies

Analogous

The Analogous color harmony consists of three colors that are next to each other on the color wheel.



4290474849



4289363278



4287596362

Triad

The Triadic color harmony groups three colors that are evenly spaced from another and form a triangle on the color wheel.



4289363278



4279015055



4288051892

Complementary

The Complementary color scheme is a pair of colors which are on the opposite of each other on the color wheel.



4289363278



428333546

Split Complementary

Split-complementary colors differ from the complementary color scheme. The scheme consists of three colors, the original color and two neighbors of the complement color.



4285105600



4289363278



4278228139

Square

The Square scheme is like the rectangle color scheme, but the four colors are evenly spaced on the color wheel.



4289363278



4282946672



4281241533



4289950107

Rectangle

The Rectangle color scheme consists of four colors that form a rectangle on the color wheel.



4289363278



4286221649



4281241533



4287135418

Sweetspot

The Sweet Spot groups the original color and five complimentary colors.



4289363278



4292791482



4289351292



4285556315



4293980400



4285558896

Same Dimension

The Same Dimension uses a secret algorithm to generate beautiful new colors.



4289363278



4292777806



4289374798



4283715660



4287908864



4279503360

Inverse Universe

The Inverse Universe completely reimagines the original color for something new.



4283333546



4283339998



4283322026



4283191380



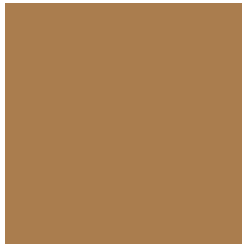
4278208660



4278192660

Previews

White Background



This preview shows how the Android color 4289363278 looks on a white background.

Color Contrast Check

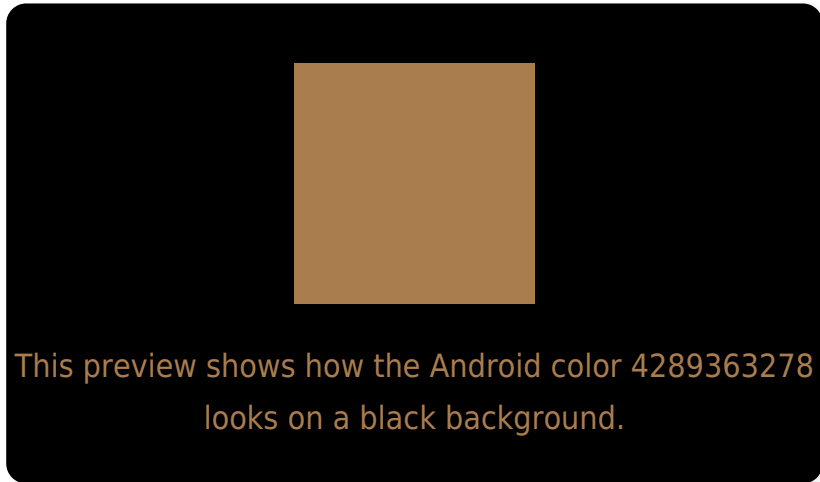
Large Text (above 18pt) WCAG AA ✓ Pass

Any Text WCAG AA ✗ Fail

Large Text (above 18pt) WCAG AAA ✗ Fail

Any Text WCAG AAA ✗ Fail

Black Background



Color Contrast Check

Large Text (above 18pt) WCAG AA ✓ Pass

Any Text WCAG AA ✓ Pass

Large Text (above 18pt) WCAG AAA ✓ Pass

Any Text WCAG AAA × Fail

If you want to check with other color combinations, try the [Color Contrast Checker](#).

Android 4289363278 Background



This preview shows how black text looks on a background with the Android color 4289363278.



This preview shows how white text looks on a background with the Android color 4289363278.

Color Blindness Simulation

Color vision deficiency is a very complex topic, and I could not describe the different causes any better than Wikipedia does, so if you want to learn more, you should check out their [article about color blindness](#).

Dichromacy



Original Color
4289363278

Protanopia
4287858257

Deuteranopia
4288905293

Trichromacy



Original Color
4289363278

Protanomaly
4288381776

Deuteranomaly
4289101645

Tritanomaly
4289558894

Monochromacy



Original Color
4289363278

Achromatopsia
4286940549

Achromatomaly
4287791729

CSS Examples

Text

The CSS property to change the color of the text to Android 4289363278 is called "color". The color property can be set on classes, ids or directly on the HTML element.

This example shows how text in the color `rgb(170, 125, 78)` looks like.

```
.text, #text, p{  
    color:rgb(170, 125, 78)  
}
```

If you want to add a text shadow in that color use the text-shadow property, you can generate a text shadow directly with our [CSS Text Shadow Generator](#).

Here you see how black text with a 4 pixel rgb(170, 125, 78) colored shadow looks like.

```
.shadow{ text-shadow: 4px 4px 2px rgb(170, 125, 78) }
```

Border

The CSS property to change the border of an element to Android 4289363278 is called "border". The border property can be set on classes, ids or directly on the HTML element.

This example shows the color as border, it can be applied via the CSS property "border" or "border-color".

```
.border, #border, table{ border:4px solid rgb(170, 125, 78) }
```

If only the border color should be changed use the property border-color.

```
.border{ border-color:rgb(170, 125, 78) }
```

If you want to add a box shadow in that color use:

Here you see how a box with a 4 pixel rgb(170, 125, 78) colored shadow looks like.

```
.boxshadow{ -moz-box-shadow:4px 4px 4px  
4px rgb(170, 125, 78); -webkit-box-  
shadow:4px 4px 4px 4px rgb(170, 125, 78);  
box-shadow:4px 4px 4px 4px rgb(170, 125,  
78) }
```

Background

The CSS property to change the background color of an element to Android 4289363278 is called "background". The background property can be set on classes, ids or directly on the HTML element.

```
.background, #background, body{  
background: rgb(170, 125, 78) }
```

If only the background color should be changed can be used:

```
.background{ background-color: rgb(170,  
125, 78) }
```

This example shows the color as background, it is applied via the CSS property "background".

To optimize and compress your CSS code, you can use our [online CSS compressor and optimizer](#) based on csstidy. If you want to create a linear or radial gradient as background or border, check our [CSS Gradient Generator](#).

Hey! You found this booklet interesting? Support Converting Colors with the new Membership Option!

The pro membership hides all ads, plus gives you double the colors in the color bucket, and more awesome pro features!

[Learn more, Memberships starting at \\$2.50/m!](#)

**Follow me
on Twitter!**

@ConvertingColor