

Converting Colors

Android(4289363324)

Have a look what the booklet for
Android(4289363324) contains.

Android(4289363324)	3
<i>Conversions</i>	4
<i>Details</i>	6
<i>Harmonies</i>	11
<i>Previews</i>	23
<i>Color Blindness Simulation</i>	26
<i>CSS Examples</i>	29

Color

Android(4289363324)

Conversions

Conversions Part 1

Format	Color
Hex	AA7D7C
RGB	170, 125, 124
RGB Percent	67%, 49%, 49%
CMY	0.3333, 0.5098, 0.5137
CMYK	0.00, 0.26, 0.27, 0.33
HSL	1°, 21%, 58%
HSV	1°, 27%, 67%
XYZ	27.5493, 24.6685, 22.3783
YIQ	138.3410, 27.1410, 9.2290

Conversions

Conversions Part 2

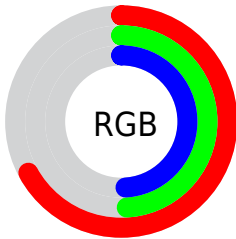
Format	Color
R_{YB}	170, 125, 124
Decimal	11173244
CIE Lab	56.75, 17.32, 7.40
CIE LCh	57, 18.833, 23.153
Yxy	24.6685, 0.3693, 0.3307
Android (android.graphics.Color)	4289363324 (0xFFAA7D7C)
YUV	138.3410, -7.0701, 27.7649
Hunter-Lab	49.6674, 12.0915, 8.0533

Details

The Android color `4289363324` is a dark color, and the websafe version is hex `996666`. A complement of this color would be `4286359978`, and the grayscale version is `4287269514`.

A 20% lighter version of the original color is `4293046960`, and `4285877323` is the 20% darker color. If you saturate the color by 10%, you get `4289358955`, and if you desaturate by 10%, it is `4289367693`.

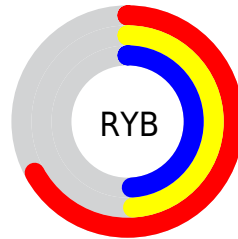
Distribution



Red (67%)

Green (49%)

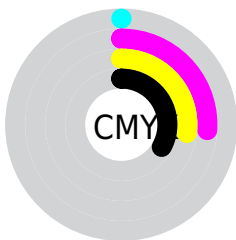
Blue (49%)



Red (67%)

Yellow (49%)

Blue (49%)

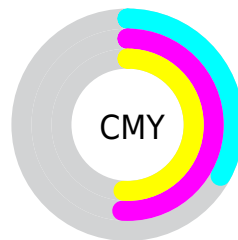


Cyan (0%)

Magenta (26%)

Yellow (27%)

Black (33%)



Cyan (33%)

Magenta (51%)

Yellow (51%)

Brightness & Saturation Gradients

These gradients show how the Android color 4289363324 changes by changing the brightness by 10 percent. The first figure shows a shift by +10% for each color and the second figure -10%.

Similar to the brightness gradients but the following saturation gradients show a change of the Android color 4289363324 by changing the saturation by 10% instead.

 4289363324

 4289363324

4294967295

 4287587427

 4293046960

 4285877323

 4294954444

 4284167477

 4294961896

 4282588960

 4281075975

 4278779904

 4278190080

 4289363324

 4289363324

 4289358955

 4289367693

 4289354842

 4289371806

 4289350473

 4289376175

 4289346104

 4289380544

 4289341991

 4289384657

 4289337622

 4289389026

 4289333509

 4289393139

 4289332224

 4289396735

Harmonies

Analogous

The Analogous color harmony consists of three colors that are next to each other on the color wheel.



4289101197



4289363324



4289036655

Triad

The Triadic color harmony groups three colors that are evenly spaced from another and form a triangle on the color wheel.



4289363324



4285828980



4285565864

Complementary

The Complementary color scheme is a pair of colors which are on the opposite of each other on the color wheel.



4289363324



4286359978

Split Complementary

Split-complementary colors differ from the complementary color scheme. The scheme consists of three colors, the original color and two neighbors of the complement color.



4284452770



4289363324



4284715396

Square

The Square scheme is like the rectangle color scheme, but the four colors are evenly spaced on the color wheel.



4289363324



4287073130



4284125588



4287006118

Rectangle

The Rectangle color scheme consists of four colors that form a rectangle on the color wheel.



4289363324



4288513129



4284125588



4285107367

Sweetspot

The Sweet Spot groups the original color and five complimentary colors.



4289363324



4292791500



4289363113



4285556069



4293980400



4285558896

Same Dimension

The Same Dimension uses a secret algorithm to generate beautiful new colors.



4289363324



4292778135



4289369212



4283714636



4287890176



4279500800

Inverse Universe

The Inverse Universe completely reimagines the original color for something new.



4286359978



4288142558



4286354090



4283192404



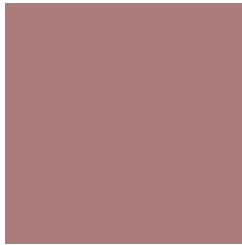
4278227348



4278195220

Previews

White Background



This preview shows how the Android color 4289363324 looks on a white background.

Color Contrast Check

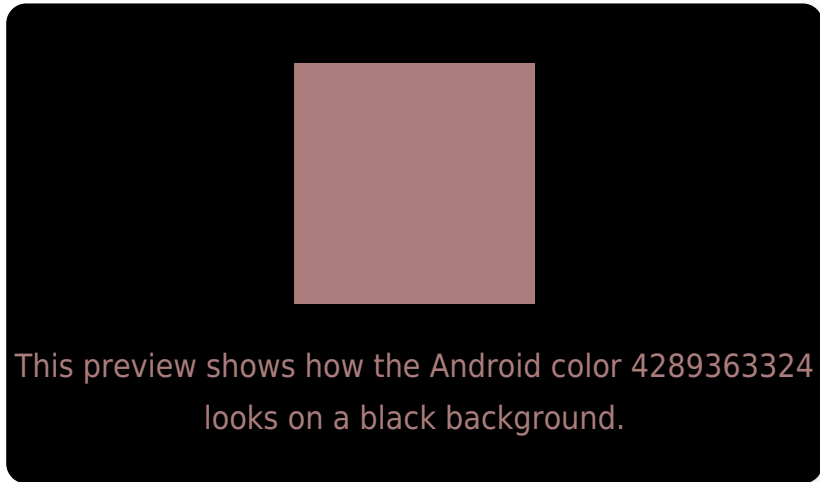
Large Text (above 18pt) WCAG AA ✓ Pass

Any Text WCAG AA ✗ Fail

Large Text (above 18pt) WCAG AAA ✗ Fail

Any Text WCAG AAA ✗ Fail

Black Background



Color Contrast Check

Large Text (above 18pt) WCAG AA ✓ Pass

Any Text WCAG AA ✓ Pass

Large Text (above 18pt) WCAG AAA ✓ Pass

Any Text WCAG AAA × Fail

If you want to check with other color combinations, try the [Color Contrast Checker](#).

Android 4289363324 Background



This preview shows how black text looks on a background with the Android color 4289363324.



This preview shows how white text looks on a background with the Android color 4289363324.

Color Blindness Simulation

Color vision deficiency is a very complex topic, and I could not describe the different causes any better than Wikipedia does, so if you want to learn more, you should check out their [article about color blindness](#).

Dichromacy



Original Color
4289363324

Protanopia
4287400066

Deuteranopia
4288382075



Tritanopia
4289428613

Trichromacy



Original Color
4289363324

Protanomaly
4288119936

Deuteranomaly
4288708987

Tritanomaly
4289428610

Monochromacy



Original Color
4289363324

Achromatopsia
4287269514

Achromatomaly
4288054661

CSS Examples

Text

The CSS property to change the color of the text to Android 4289363324 is called "color". The color property can be set on classes, ids or directly on the HTML element.

This example shows how text in the color `rgb(170, 125, 124)` looks like.

```
.text, #text, p{  
    color:rgb(170, 125, 124)  
}
```

If you want to add a text shadow in that color use the text-shadow property, you can generate a text shadow directly with our [CSS Text Shadow Generator](#).

Here you see how black text with a 4 pixel rgb(170, 125, 124) colored shadow looks like.

```
.shadow{ text-shadow: 4px 4px 2px rgb(170, 125, 124) }
```

Border

The CSS property to change the border of an element to Android 4289363324 is called "border". The border property can be set on classes, ids or directly on the HTML element.

This example shows the color as border, it can be applied via the CSS property "border" or "border-color".

```
.border, #border, table{ border:4px solid rgb(170, 125, 124) }
```

If only the border color should be changed use the property `border-color`.

```
.border{ border-color:rgb(170, 125, 124) }
```

If you want to add a box shadow in that color use:

Here you see how a box with a 4 pixel `rgb(170, 125, 124)` colored shadow looks like.

```
.boxshadow{ -moz-box-shadow:4px 4px 4px 4px rgb(170, 125, 124); -webkit-box-shadow:4px 4px 4px 4px rgb(170, 125, 124); box-shadow:4px 4px 4px 4px rgb(170, 125, 124) }
```

Background

The CSS property to change the background color of an element to Android 4289363324 is called "background". The background property can be set on classes, ids or directly on the HTML element.

```
.background, #background, body{  
background: rgb(170, 125, 124) }
```

If only the background color should be changed can be used:

```
.background{ background-color: rgb(170,  
125, 124) }
```

This example shows the color as background, it is applied via the CSS property "background".

To optimize and compress your CSS code, you can use our [online CSS compressor and optimizer](#) based on csstidy. If you want to create a linear or radial gradient as background or border, check our [CSS Gradient Generator](#).

Hey! You found this booklet interesting? Support Converting Colors with the new Membership Option!

The pro membership hides all ads, plus gives you double the colors in the color bucket, and more awesome pro features!

[Learn more, Memberships starting at \\$2.50/m!](#)

**Follow me
on Twitter!**

@ConvertingColor