

Converting Colors

Android(4289365872)

Have a look what the booklet for
Android(4289365872) contains.

Android(4289365872)	3
<i>Conversions</i>	4
<i>Details</i>	6
<i>Harmonies</i>	11
<i>Previews</i>	23
<i>Color Blindness Simulation</i>	26
<i>CSS Examples</i>	29

Color

Android(4289365872)

Conversions

Conversions Part 1

Format	Color
Hex	AA8770
RGB	170, 135, 112
RGB Percent	67%, 53%, 44%
CMY	0.3333, 0.4706, 0.5608
CMYK	0.00, 0.21, 0.34, 0.33
HSL	24°, 25%, 55%
HSV	24°, 34%, 67%
XYZ	28.1662, 27.0438, 19.0647
YIQ	142.8430, 28.2430, 0.2670

Conversions

Conversions Part 2

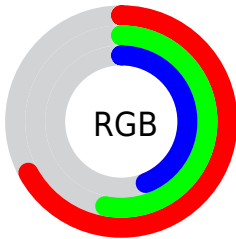
Format	Color
R_{YB}	170, 150, 112
Decimal	11175792
CIE _{Lab}	59.01, 10.01, 17.45
CIE _{LCh}	59, 20.115, 60.157
Yxy	27.0438, 0.3792, 0.3641
Android (android.graphics.Color)	4289365872 (0xFFAA8770)
YUV	142.8430, -15.2056, 23.8167
Hunter-Lab	52.0037, 5.6724, 14.6667

Details

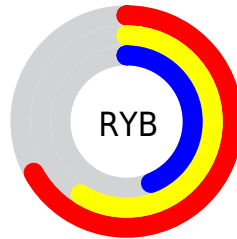
The Android color `4289365872` is a dark color, and the websafe version is hex `CC9999`. A complement of this color would be `4285567914`, and the grayscale version is `4287598479`.

A 20% lighter version of the original color is `4293049508`, and `4285879616` is the 20% darker color. If you saturate the color by 10%, you get `4289363295`, and if you desaturate by 10%, it is `4289368449`.

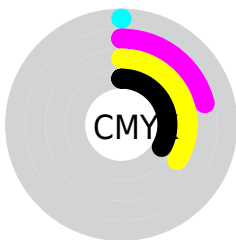
Distribution



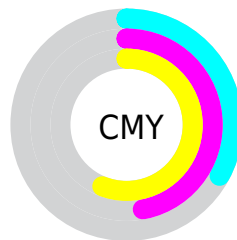
- Red (67%)
- Green (53%)
- Blue (44%)



- Red (67%)
- Yellow (59%)
- Blue (44%)



- Cyan (0%)
- Magenta (21%)
- Yellow (34%)
- Black (33%)



- Cyan (33%)
- Magenta (47%)
- Yellow (56%)

Brightness & Saturation Gradients

These gradients show how the Android color 4289365872 changes by changing the brightness by 10 percent. The first figure shows a shift by +10% for each color and the second figure -10%.

Similar to the brightness gradients but the following saturation gradients show a change of the Android color 4289365872 by changing the saturation by 10% instead.



4289365872



4289365872

4294967295



4287589975



4293049508



4285879616



4294957247



4284169770



4294964443



4282525717



4294967287



4281078784



4279107584



4278190080



4289365872



4289365872



4289363295



4289368449

 4289360462

 4289371282

 4289357885

 4289373859

 4289355308

 4289376436

 4289352731

 4289379013

 4289349898

 4289381846

 4289348352

 4289384423

 4289387000

 4289389567

Harmonies

Analogous

The Analogous color harmony consists of three colors that are next to each other on the color wheel.



4289889149



4289365872



4288384363

Triad

The Triadic color harmony groups three colors that are evenly spaced from another and form a triangle on the color wheel.



4289365872



4284717197



4287728044

Complementary

The Complementary color scheme is a pair of colors which are on the opposite of each other on the color wheel.



4289365872



4285567914

Split Complementary

Split-complementary colors differ from the complementary color scheme. The scheme consists of three colors, the original color and two neighbors of the complement color.



4286156977



4289365872



4284258207

Square

The Square scheme is like the rectangle color scheme, but the four colors are evenly spaced on the color wheel.



4289365872



4285830780



4284781996



4289037472

Rectangle

The Rectangle color scheme consists of four colors that form a rectangle on the color wheel.



4289365872



4287598957



4284781996



4287204527

Sweetspot

The Sweet Spot groups the original color and five complimentary colors.



4289365872



4292792520



4289360020



4285556835



4293980400



4285558896

Same Dimension

The Same Dimension uses a secret algorithm to generate beautiful new colors.



4289365872



4292781955



4289373040



4283715404



4287904512



4279502848

Inverse Universe

The Inverse Universe completely reimagines the original color for something new.



4285567914



4286823134



4285560746



4283191636



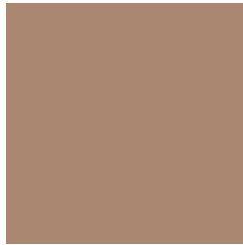
4278213012



4278193172

Previews

White Background



This preview shows how the Android color 4289365872 looks on a white background.

Color Contrast Check

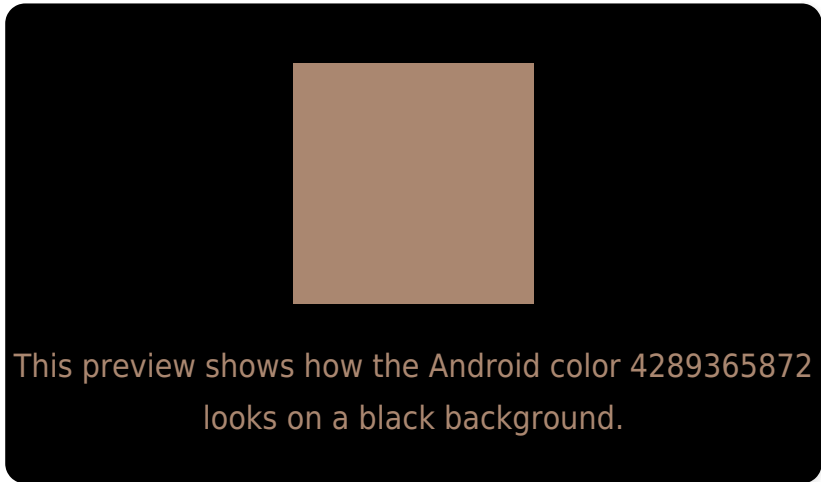
Large Text (above 18pt) WCAG AA ✓ Pass

Any Text WCAG AA ✗ Fail

Large Text (above 18pt) WCAG AAA ✗ Fail

Any Text WCAG AAA ✗ Fail

Black Background



Color Contrast Check

Large Text (above 18pt) WCAG AA ✓ Pass

Any Text WCAG AA ✓ Pass

Large Text (above 18pt) WCAG AAA ✓ Pass

Any Text WCAG AAA × Fail

If you want to check with other color combinations, try the [Color Contrast Checker](#).

Android 4289365872 Background



This preview shows how black text looks on a background with the Android color 4289365872.



This preview shows how white text looks on a background with the Android color 4289365872.

Color Blindness Simulation

Color vision deficiency is a very complex topic, and I could not describe the different causes any better than Wikipedia does, so if you want to learn more, you should check out their [article about color blindness](#).

Dichromacy



Original Color


4289365872

Protanopia

4288122483

Deuteranopia

4289104240



Tritanopia
4289561485

Trichromacy



Original Color
4289365872

Protanomaly
4288580466

Deuteranomaly
4289169520

Tritanomaly
4289496194

Monochromacy



Original Color
4289365872

Achromatopsia
4287598479

Achromatomaly
4288253060

CSS Examples

Text

The CSS property to change the color of the text to Android 4289365872 is called "color". The color property can be set on classes, ids or directly on the HTML element.

This example shows how text in the color `rgb(170, 135, 112)` looks like.

```
.text, #text, p{  
    color:rgb(170, 135, 112)  
}
```

If you want to add a text shadow in that color use the text-shadow property, you can generate a text shadow directly with our [CSS Text Shadow Generator](#).

Here you see how black text with a 4 pixel rgb(170, 135, 112) colored shadow looks like.

```
.shadow{ text-shadow: 4px 4px 2px rgb(170, 135, 112) }
```

Border

The CSS property to change the border of an element to Android 4289365872 is called "border". The border property can be set on classes, ids or directly on the HTML element.

This example shows the color as border, it can be applied via the CSS property "border" or "border-color".

```
.border, #border, table{ border:4px solid rgb(170, 135, 112) }
```

If only the border color should be changed use the property `border-color`.

```
.border{ border-color:rgb(170, 135, 112) }
```

If you want to add a box shadow in that color use:

Here you see how a box with a 4 pixel `rgb(170, 135, 112)` colored shadow looks like.

```
.boxshadow{ -moz-box-shadow:4px 4px 4px  
4px rgb(170, 135, 112); -webkit-box-  
shadow:4px 4px 4px 4px rgb(170, 135, 112);  
box-shadow:4px 4px 4px 4px rgb(170, 135,  
112) }
```

Background

The CSS property to change the background color of an element to Android 4289365872 is called "background". The background property can be set on classes, ids or directly on the HTML element.

```
.background, #background, body{  
background: rgb(170, 135, 112) }
```

If only the background color should be changed can be used:

```
.background{ background-color: rgb(170,  
135, 112) }
```

This example shows the color as background, it is applied via the CSS property "background".

To optimize and compress your CSS code, you can use our [online CSS compressor and optimizer](#) based on csstidy. If you want to create a linear or radial gradient as background or border, check our [CSS Gradient Generator](#).

Hey! You found this booklet interesting? Support Converting Colors with the new Membership Option!

The pro membership hides all ads, plus gives you double the colors in the color bucket, and more awesome pro features!

[Learn more, Memberships starting at \\$2.50/m!](#)

**Follow me
on Twitter!**

@ConvertingColor