

Converting Colors

Android(4289367410)

Have a look what the booklet for
Android(4289367410) contains.

Android(4289367410)	3
<i>Conversions</i>	4
<i>Details</i>	6
<i>Harmonies</i>	11
<i>Previews</i>	23
<i>Color Blindness Simulation</i>	26
<i>CSS Examples</i>	29

Color

Android(4289367410)

Conversions

Conversions Part 1

Format	Color
Hex	AA8D72
RGB	170, 141, 114
RGB Percent	67%, 55%, 45%
CMY	0.3333, 0.4471, 0.5529
CMYK	0.00, 0.17, 0.33, 0.33
HSL	29°, 25%, 56%
HSV	29°, 33%, 67%
XYZ	29.1397, 28.8107, 19.9448
YIQ	146.5930, 25.9510, -2.2490

Conversions

Conversions Part 2

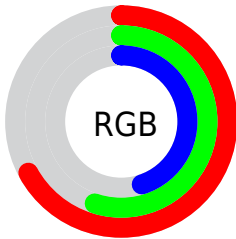
Format	Color
R_{YB}	170, 166, 114
Decimal	11177330
CIE _{Lab}	60.61, 6.91, 18.51
CIE _{LCh}	61, 19.758, 69.519
Yxy	28.8107, 0.3741, 0.3699
Android (android.graphics.Color)	4289367410 (0xFFAA8D72)
YUV	146.5930, -16.0683, 20.5279
Hunter-Lab	53.6756, 2.9727, 15.5419

Details

The Android color `4289367410` is a dark color, and the websafe version is hex `999966`. A complement of this color would be `4285697962`, and the grayscale version is `4287861651`.

A 20% lighter version of the original color is `4293051302`, and `4285881154` is the 20% darker color. If you saturate the color by 10%, you get `4289365089`, and if you desaturate by 10%, it is `4289369731`.

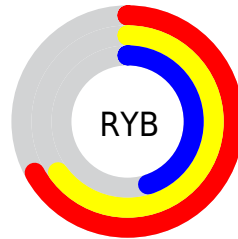
Distribution



Red (67%)

Green (55%)

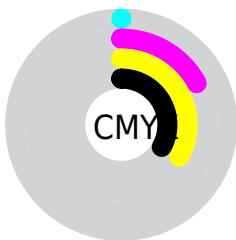
Blue (45%)



Red (67%)

Yellow (65%)

Blue (45%)

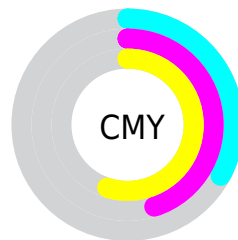


Cyan (0%)

Magenta (17%)

Yellow (33%)

Black (33%)



Cyan (33%)

Magenta (45%)

Yellow (55%)

Brightness & Saturation Gradients

These gradients show how the Android color 4289367410 changes by changing the brightness by 10 percent. The first figure shows a shift by +10% for each color and the second figure -10%.

Similar to the brightness gradients but the following saturation gradients show a change of the Android color 4289367410 by changing the saturation by 10% instead.



4289367410



4289367410

4294967295



4287591257



4293051302



4285881154



4294958785



4284171051



4294966237



4282592534



4294967290



4281145344



4279435264



4278190080



4289367410



4289367410



4289365089



4289369731

■ 4289362768

■ 4289372052

■ 4289360703

■ 4289374117

■ 4289358382

■ 4289376438

■ 4289356061

■ 4289378759

■ 4289353740

■ 4289381080

■ 4289352192

■ 4289383401

■ 4289385466

■ 4289387775

Harmonies

Analogous

The Analogous color harmony consists of three colors that are next to each other on the color wheel.



4290021501



4289367410



4288320368

Triad

The Triadic color harmony groups three colors that are evenly spaced from another and form a triangle on the color wheel.



4289367410



4284783767



4288449709

Complementary

The Complementary color scheme is a pair of colors which are on the opposite of each other on the color wheel.



4289367410



4285697962

Split Complementary

Split-complementary colors differ from the complementary color scheme. The scheme consists of three colors, the original color and two neighbors of the complement color.



4286943924



4289367410



4284652456

Square

The Square scheme is like the rectangle color scheme, but the four colors are evenly spaced on the color wheel.



4289367410



4285766533



4285503410



4289562527

Rectangle

The Rectangle color scheme consists of four colors that form a rectangle on the color wheel.



4289367410



4287469172



4285503410



4287991472

Sweetspot

The Sweet Spot groups the original color and five complimentary colors.



4289367410



4292793032



4289360528



4285557091



4293980400



4285558896

Same Dimension

The Same Dimension uses a secret algorithm to generate beautiful new colors.



4289367410



4292784261



4289374322



4283715660



4287907584



4279503360

Inverse Universe

The Inverse Universe completely reimagines the original color for something new.



4285697962



4286952414



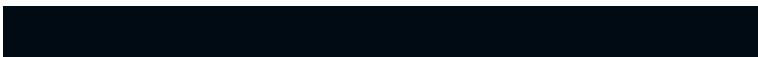
4285691050



4283191380



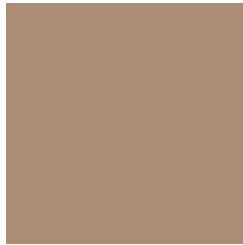
4278209940



4278192916

Previews

White Background



This preview shows how the Android color 4289367410 looks on a white background.

Color Contrast Check

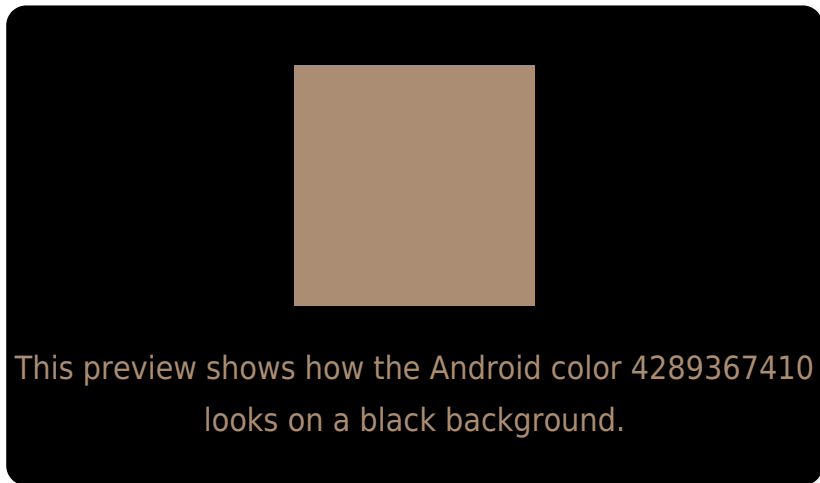
Large Text (above 18pt) WCAG AA ✓ Pass

Any Text WCAG AA ✗ Fail

Large Text (above 18pt) WCAG AAA ✗ Fail

Any Text WCAG AAA ✗ Fail

Black Background



Color Contrast Check

Large Text (above 18pt) WCAG AA ✓ Pass

Any Text WCAG AA ✓ Pass

Large Text (above 18pt) WCAG AAA ✓ Pass

Any Text WCAG AAA × Fail

If you want to check with other color combinations, try the [Color Contrast Checker](#).

Android 4289367410 Background



This preview shows how black text looks on a background with the Android color 4289367410.



This preview shows how white text looks on a background with the Android color 4289367410.

Color Blindness Simulation

Color vision deficiency is a very complex topic, and I could not describe the different causes any better than Wikipedia does, so if you want to learn more, you should check out their [article about color blindness](#).

Dichromacy



Original Color
4289367410

Protanopia
4288451188

Deuteranopia
4289432690

Trichromacy



Original Color
4289367410

Protanomaly
4288778355

Deuteranomaly
4289432690

Tritanomaly
4289563271

Monochromacy



Original Color
4289367410

Achromatopsia
4287861651

Achromatomaly
4288385415

CSS Examples

Text

The CSS property to change the color of the text to Android 4289367410 is called "color". The color property can be set on classes, ids or directly on the HTML element.

This example shows how text in the color `rgb(170, 141, 114)` looks like.

```
.text, #text, p{  
    color:rgb(170, 141, 114)  
}
```

If you want to add a text shadow in that color use the text-shadow property, you can generate a text shadow directly with our [CSS Text Shadow Generator](#).

Here you see how black text with a 4 pixel rgb(170, 141, 114) colored shadow looks like.

```
.shadow{ text-shadow: 4px 4px 2px rgb(170, 141, 114) }
```

Border

The CSS property to change the border of an element to Android 4289367410 is called "border". The border property can be set on classes, ids or directly on the HTML element.

This example shows the color as border, it can be applied via the CSS property "border" or "border-color".

```
.border, #border, table{ border:4px solid rgb(170, 141, 114) }
```

If only the border color should be changed use the property `border-color`.

```
.border{ border-color:rgb(170, 141, 114) }
```

If you want to add a box shadow in that color use:

Here you see how a box with a 4 pixel `rgb(170, 141, 114)` colored shadow looks like.

```
.boxshadow{ -moz-box-shadow:4px 4px 4px  
4px rgb(170, 141, 114); -webkit-box-  
shadow:4px 4px 4px 4px rgb(170, 141, 114);  
box-shadow:4px 4px 4px 4px rgb(170, 141,  
114) }
```

Background

The CSS property to change the background color of an element to Android 4289367410 is called "background". The background property can be set on classes, ids or directly on the HTML element.

```
.background, #background, body{  
background: rgb(170, 141, 114) }
```

If only the background color should be changed can be used:

```
.background{ background-color: rgb(170,  
141, 114) }
```

This example shows the color as background, it is applied via the CSS property "background".

To optimize and compress your CSS code, you can use our [online CSS compressor and optimizer](#) based on csstidy. If you want to create a linear or radial gradient as background or border, check our [CSS Gradient Generator](#).

Hey! You found this booklet interesting? Support Converting Colors with the new Membership Option!

The pro membership hides all ads, plus gives you double the colors in the color bucket, and more awesome pro features!

[Learn more, Memberships starting at \\$2.50/m!](#)

**Follow me
on Twitter!**

@ConvertingColor