

Converting Colors

Android(4289412196)

Have a look what the booklet for
Android(4289412196) contains.

Android(4289412196)	3
<i>Conversions</i>	4
<i>Details</i>	6
<i>Harmonies</i>	11
<i>Previews</i>	23
<i>Color Blindness Simulation</i>	26
<i>CSS Examples</i>	29

Color

Android(4289412196)

Conversions

Conversions Part 1

Format	Color
Hex	AB3C64
RGB	171, 60, 100
RGB Percent	67%, 24%, 39%
CMY	0.3294, 0.7647, 0.6078
CMYK	0.00, 0.65, 0.42, 0.33
HSL	338°, 48%, 45%
HSV	338°, 65%, 67%
XYZ	20.7107, 12.8097, 13.4375
YIQ	97.7490, 53.3160, 35.9720

Conversions

Conversions Part 2

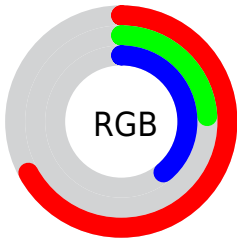
Format	Color
R_{YB}	171, 60, 100
Decimal	11222116
CIE _{Lab}	42.48, 48.83, 1.24
CIE _{LCh}	42, 48.845, 1.460
Yxy	12.8097, 0.4410, 0.2728
Android (android.graphics.Color)	4289412196 (0xFFAB3C64)
YUV	97.7490, 1.1097, 64.2411
Hunter-Lab	35.7907, 40.6573, 2.7932

Details

The Android color **4289412196** is a dark color, and the websafe version is hex **993366**. A complement of this color would be **4282166147**, and the grayscale version is **4284637794**.

A 20% lighter version of the original color is **4293292695**, and **4285661238** is the 20% darker color. If you saturate the color by 10%, you get **4289407833**, and if you desaturate by 10%, it is **4289416559**.

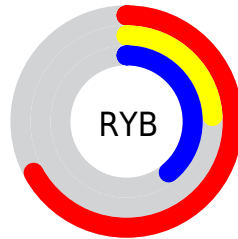
Distribution



Red (67%)

Green (24%)

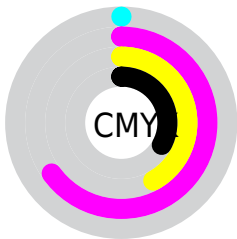
Blue (39%)



Red (67%)

Yellow (24%)

Blue (39%)

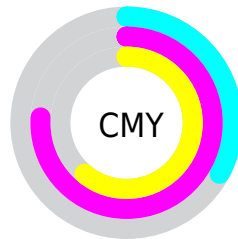


Cyan (0%)

Magenta (65%)

Yellow (42%)

Black (33%)



Cyan (33%)

Magenta (76%)

Yellow (61%)

Brightness & Saturation Gradients

These gradients show how the Android color 4289412196 changes by changing the brightness by 10 percent. The first figure shows a shift by +10% for each color and the second figure -10%.

Similar to the brightness gradients but the following saturation gradients show a change of the Android color 4289412196 by changing the saturation by 10% instead.



4289412196



4289412196

4294967295



4287504204



4293292695



4285661238



4294938033



4283891745



4294944973



4282187784



4294952425



4280156161



4294959615



4278190080



4289412196



4289412196



4289407833



4289416559



4289403470



4289420922

 4289399107

 4289425285

 4289396798

 4289429648

 4289434011

 4289438630

 4289442993

 4289447356

 4289451718

Harmonies

Analogous

The Analogous color harmony consists of three colors that are next to each other on the color wheel.



4288038539



4289412196



4289282877

Triad

The Triadic color harmony groups three colors that are evenly spaced from another and form a triangle on the color wheel.



4289412196



4283330071



4278219435

Complementary

The Complementary color scheme is a pair of colors which are on the opposite of each other on the color wheel.



4289412196



4282166147

Split Complementary

Split-complementary colors differ from the complementary color scheme. The scheme consists of three colors, the original color and two neighbors of the complement color.



4278220685



4289412196



4278219836

Square

The Square scheme is like the rectangle color scheme, but the four colors are evenly spaced on the color wheel.



4289412196



4285948675



4278220645



4278216885

Rectangle

The Rectangle color scheme consists of four colors that form a rectangle on the color wheel.



4289412196



4288564773



4278220645



4278219939

Sweetspot

The Sweet Spot groups the original color and five complimentary colors.



4289412196



4292785347



4286725291



4285552224



4293980400



4285558896

Same Dimension

The Same Dimension uses a secret algorithm to generate beautiful new colors.



4289412196



4292751727



4289415996



4283911761



4288020534



4279697416

Inverse Universe

The Inverse Universe completely reimagines the original color for something new.



4289412196



4292751727



4282162347



4283911761



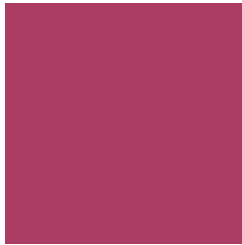
4288020534



4279697416

Previews

White Background



This preview shows how the Android color 4289412196 looks on a white background.

Color Contrast Check

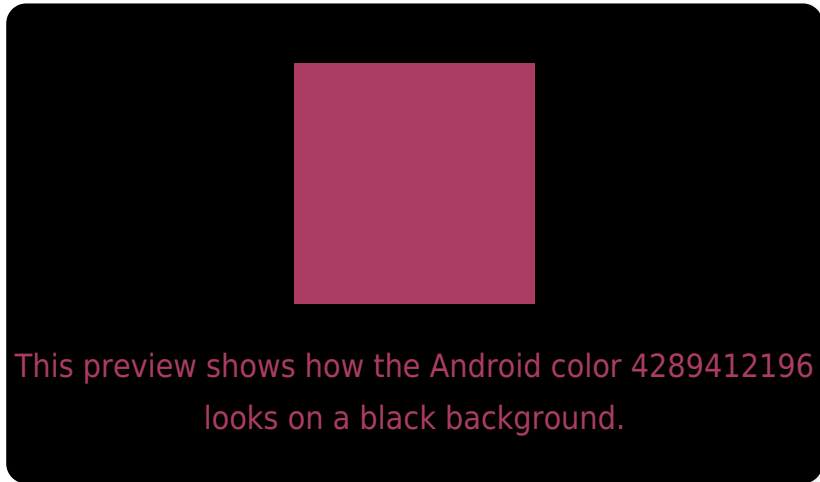
Large Text (above 18pt) WCAG AA ✓ Pass

Any Text WCAG AA ✓ Pass

Large Text (above 18pt) WCAG AAA ✓ Pass

Any Text WCAG AAA × Fail

Black Background



Color Contrast Check

Large Text (above 18pt) WCAG AA ✓ Pass

Any Text WCAG AA × Fail

Large Text (above 18pt) WCAG AAA × Fail

Any Text WCAG AAA × Fail

If you want to check with other color combinations, try the [Color Contrast Checker](#).

Android 4289412196 Background



This preview shows how black text looks on a background with the Android color 4289412196.

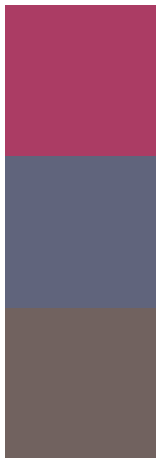


This preview shows how white text looks on a background with the Android color 4289412196.

Color Blindness Simulation

Color vision deficiency is a very complex topic, and I could not describe the different causes any better than Wikipedia does, so if you want to learn more, you should check out their [article about color blindness](#).

Dichromacy



Original Color
4289412196

Protanopia
4284507260

Deuteranopia
4285620831

Trichromacy



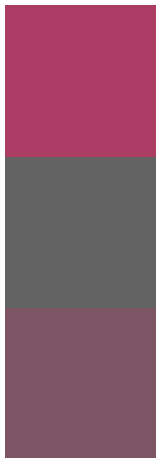
Original Color
4289412196

Protanomaly
4286272883

Deuteranomaly
4286993505

Tritanomaly
4289347666

Monochromacy



Original Color
4289412196

Achromatopsia
4284637794

Achromatomaly
4286403683

CSS Examples

Text

The CSS property to change the color of the text to Android 4289412196 is called "color". The color property can be set on classes, ids or directly on the HTML element.

This example shows how text in the color `rgb(171, 60, 100)` looks like.

```
.text, #text, p{  
    color:rgb(171, 60, 100)  
}
```

If you want to add a text shadow in that color use the text-shadow property, you can generate a text shadow directly with our [CSS Text Shadow Generator](#).

Here you see how black text with a 4 pixel rgb(171, 60, 100) colored shadow looks like.

```
.shadow{ text-shadow: 4px 4px 2px rgb(171, 60, 100) }
```

Border

The CSS property to change the border of an element to Android 4289412196 is called "border". The border property can be set on classes, ids or directly on the HTML element.

This example shows the color as border, it can be applied via the CSS property "border" or "border-color".

```
.border, #border, table{ border:4px solid rgb(171, 60, 100) }
```

If only the border color should be changed use the property `border-color`.

```
.border{ border-color:rgb(171, 60, 100) }
```

If you want to add a box shadow in that color use:

Here you see how a box with a 4 pixel `rgb(171, 60, 100)` colored shadow looks like.

```
.boxshadow{ -moz-box-shadow:4px 4px 4px  
4px rgb(171, 60, 100); -webkit-box-  
shadow:4px 4px 4px 4px rgb(171, 60, 100);  
box-shadow:4px 4px 4px 4px rgb(171, 60,  
100) }
```

Background

The CSS property to change the background color of an element to Android 4289412196 is called "background". The background property can be set on classes, ids or directly on the HTML element.

```
.background, #background, body{  
background: rgb(171, 60, 100) }
```

If only the background color should be changed can be used:

```
.background{ background-color: rgb(171, 60,  
100) }
```

This example shows the color as background, it is applied via the CSS property "background".

To optimize and compress your CSS code, you can use our [online CSS compressor and optimizer](#) based on csstidy. If you want to create a linear or radial gradient as background or border, check our [CSS Gradient Generator](#).

Hey! You found this booklet interesting? Support Converting Colors with the new Membership Option!

The pro membership hides all ads, plus gives you double the colors in the color bucket, and more awesome pro features!

[Learn more, Memberships starting at \\$2.50/m!](#)

**Follow me
on Twitter!**

@ConvertingColor