

Converting Colors

Android(4289427795)

Have a look what the booklet for
Android(4289427795) contains.

Android(4289427795)	3
<i>Conversions</i>	4
<i>Details</i>	6
<i>Harmonies</i>	11
<i>Previews</i>	23
<i>Color Blindness Simulation</i>	26
<i>CSS Examples</i>	29

Color

Android(4289427795)

Conversions

Conversions Part 1

Format	Color
Hex	AB7953
RGB	171, 121, 83
RGB Percent	67%, 47%, 33%
CMY	0.3294, 0.5255, 0.6745
CMYK	0.00, 0.29, 0.51, 0.33
HSL	26°, 35%, 50%
HSV	26°, 51%, 67%
XYZ	25.1933, 22.9572, 11.2870
YIQ	131.6180, 41.9980, -1.2180

Conversions

Conversions Part 2

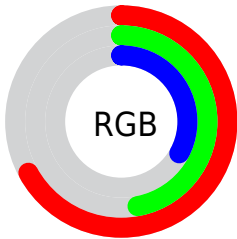
Format	Color
RYB	171, 150, 83
Decimal	11237715
CIELab	55.03, 15.03, 28.51
CIELCh	55, 32.229, 62.209
Yxy	22.9572, 0.4239, 0.3862
Android (android.graphics.Color)	4289427795 (0xFFAB7953)
YUV	131.6180, -23.9687, 34.5380
Hunter-Lab	47.9137, 10.0074, 19.5727

Details

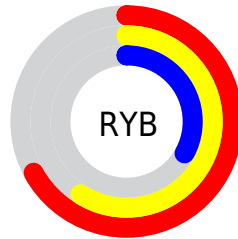
The Android color **4289427795** is a dark color, and the websafe version is hex **996633**. A complement of this color would be **4283663787**, and the grayscale version is **4286874756**.

A 20% lighter version of the original color is **4293176709**, and **4285810725** is the 20% darker color. If you saturate the color by 10%, you get **4289425218**, and if you desaturate by 10%, it is **4289430372**.

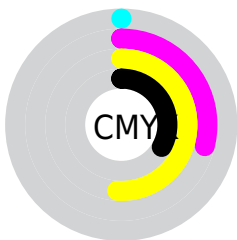
Distribution



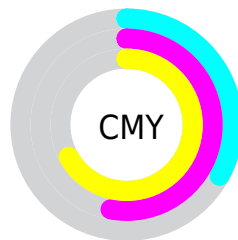
- Red (67%)
- Green (47%)
- Blue (33%)



- Red (67%)
- Yellow (59%)
- Blue (33%)



- Cyan (0%)
- Magenta (29%)
- Yellow (51%)
- Black (33%)



- Cyan (33%)
- Magenta (53%)
- Yellow (67%)

Brightness & Saturation Gradients

These gradients show how the Android color 4289427795 changes by changing the brightness by 10 percent. The first figure shows a shift by +10% for each color and the second figure -10%.

Similar to the brightness gradients but the following saturation gradients show a change of the Android color 4289427795 by changing the saturation by 10% instead.



4289427795



4289427795

4294967295



4287586363



4293176709



4285810725



4294953375



4284035599



4294960571



4282391552



4294967254



4280747520



4294967283



4278190080



4289427795



4289427795



4289425218



4289430372



4289422897



4289432693

■ 4289420320

■ 4289435270

■ 4289417743

■ 4289437847

■ 4289415680

■ 4289440424

■ 4289442746

■ 4289445323

■ 4289447900

■ 4289450221

Harmonies

Analogous

The Analogous color harmony consists of three colors that are next to each other on the color wheel.



4290277735



4289427795



4287923019

Triad

The Triadic color harmony groups three colors that are evenly spaced from another and form a triangle on the color wheel.



4289427795



4281111429



4287265971

Complementary

The Complementary color scheme is a pair of colors which are on the opposite of each other on the color wheel.



4289427795



4283663787

Split Complementary

Split-complementary colors differ from the complementary color scheme. The scheme consists of three colors, the original color and two neighbors of the complement color.



4284384955



4289427795



4278227617

Square

The Square scheme is like the rectangle color scheme, but the four colors are evenly spaced on the color wheel.



4289427795



4283797609



4280847796



4289295006

Rectangle

The Rectangle color scheme consists of four colors that form a rectangle on the color wheel.



4289427795



4286679119



4280847796



4286349239

Sweetspot

The Sweet Spot groups the original color and five complimentary colors.



4289427795



4292791229



4289418118



4285556060



4293980400



4285558896

Same Dimension

The Same Dimension uses a secret algorithm to generate beautiful new colors.



4289427795



4292776020



4289438803



4283912782



4288037120



4279699968

Inverse Universe

The Inverse Universe completely reimagines the original color for something new.



4283663787



4283736798



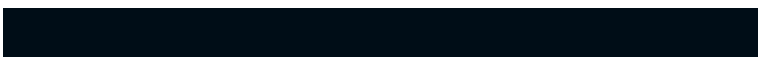
4283652779



4283323223



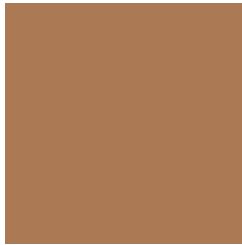
4278211990



4278193431

Previews

White Background



This preview shows how the Android color 4289427795 looks on a white background.

Color Contrast Check

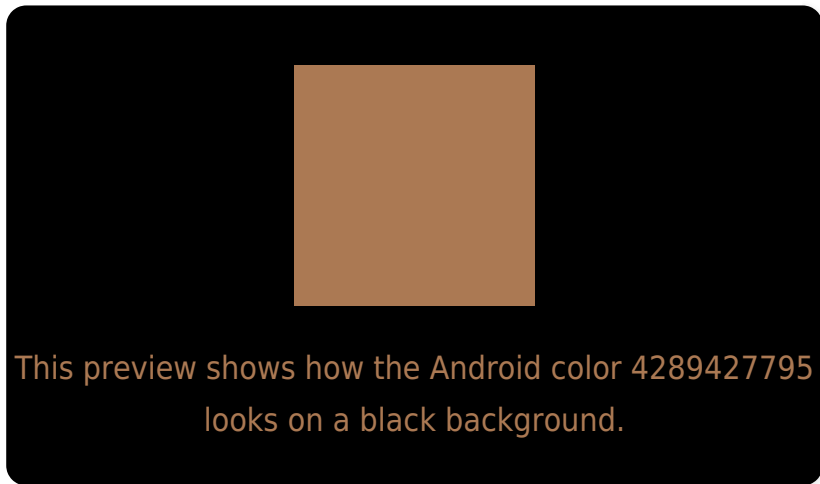
Large Text (above 18pt) WCAG AA ✓ Pass

Any Text WCAG AA ✗ Fail

Large Text (above 18pt) WCAG AAA ✗ Fail

Any Text WCAG AAA ✗ Fail

Black Background



Color Contrast Check

Large Text (above 18pt) WCAG AA ✓ Pass

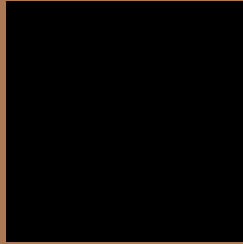
Any Text WCAG AA ✓ Pass

Large Text (above 18pt) WCAG AAA ✓ Pass

Any Text WCAG AAA × Fail

If you want to check with other color combinations, try the [Color Contrast Checker](#).

Android 4289427795 Background



This preview shows how black text looks on a background with the Android color 4289427795.



This preview shows how white text looks on a background with the Android color 4289427795.

Color Blindness Simulation

Color vision deficiency is a very complex topic, and I could not describe the different causes any better than Wikipedia does, so if you want to learn more, you should check out their [article about color blindness](#).

Dichromacy



Original Color

4289427795

Protanopia

4287595607

Deuteranopia

4288708178

Trichromacy



Original Color

4289427795

Protanomaly

4288249942

Deuteranomaly

4288969810

Tritanomaly

4289558125

Monochromacy



Original Color

4289427795

Achromatopsia

4286874756

Achromatomaly

4287791218

CSS Examples

Text

The CSS property to change the color of the text to Android 4289427795 is called "color". The color property can be set on classes, ids or directly on the HTML element.

This example shows how text in the color `rgb(171, 121, 83)` looks like.

```
.text, #text, p{  
    color:rgb(171, 121, 83)  
}
```

If you want to add a text shadow in that color use the text-shadow property, you can generate a text shadow directly with our [CSS Text Shadow Generator](#).

Here you see how black text with a 4 pixel rgb(171, 121, 83) colored shadow looks like.

```
.shadow{ text-shadow: 4px 4px 2px rgb(171, 121, 83) }
```

Border

The CSS property to change the border of an element to Android 4289427795 is called "border". The border property can be set on classes, ids or directly on the HTML element.

This example shows the color as border, it can be applied via the CSS property "border" or "border-color".

```
.border, #border, table{ border:4px solid rgb(171, 121, 83) }
```

If only the border color should be changed use the property `border-color`.

```
.border{ border-color:rgb(171, 121, 83) }
```

If you want to add a box shadow in that color use:

Here you see how a box with a 4 pixel `rgb(171, 121, 83)` colored shadow looks like.

```
.boxshadow{ -moz-box-shadow:4px 4px 4px  
4px rgb(171, 121, 83); -webkit-box-  
shadow:4px 4px 4px 4px rgb(171, 121, 83);  
box-shadow:4px 4px 4px 4px rgb(171, 121,  
83) }
```

Background

The CSS property to change the background color of an element to Android 4289427795 is called "background". The background property can be set on classes, ids or directly on the HTML element.

```
.background, #background, body{  
background: rgb(171, 121, 83) }
```

If only the background color should be changed can be used:

```
.background{ background-color: rgb(171,  
121, 83) }
```

This example shows the color as background, it is applied via the CSS property "background".

To optimize and compress your CSS code, you can use our [online CSS compressor and optimizer](#) based on csstidy. If you want to create a linear or radial gradient as background or border, check our [CSS Gradient Generator](#).

Hey! You found this booklet interesting? Support Converting Colors with the new Membership Option!

The pro membership hides all ads, plus gives you double the colors in the color bucket, and more awesome pro features!

[Learn more, Memberships starting at \\$2.50/m!](#)

**Follow me
on Twitter!**

@ConvertingColor