

Converting Colors

Android(4289427798)

Have a look what the booklet for
Android(4289427798) contains.

| | |
|--|----|
| Android(4289427798) | 3 |
| <i>Conversions</i> | 4 |
| <i>Details</i> | 6 |
| <i>Harmonies</i> | 11 |
| <i>Previews</i> | 23 |
| <i>Color Blindness Simulation</i> | 26 |
| <i>CSS Examples</i> | 29 |

Color

Android(4289427798)

Conversions

Conversions Part 1

| Format | Color |
|---------------|----------------------------|
| Hex | AB7956 |
| RGB | 171, 121, 86 |
| RGB Percent | 67%, 47%, 34% |
| CMY | 0.3294, 0.5255, 0.6627 |
| CMYK | 0.00, 0.29, 0.50, 0.33 |
| HSL | 25°, 34%, 50% |
| HSV | 25°, 50%, 67% |
| XYZ | 25.3117, 23.0046, 11.9104 |
| YIQ | 131.9600, 41.0350, -0.2850 |

Conversions

Conversions Part 2

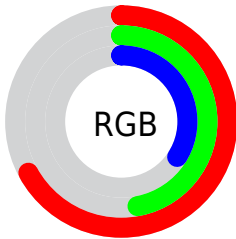
| Format | Color |
|-------------------------------------|--------------------------------|
| RYB | 171, 146, 86 |
| Decimal | 11237718 |
| CIELab | 55.08, 15.32, 26.90 |
| CIElCh | 55, 30.953, 60.337 |
| Yxy | 23.0046, 0.4203, 0.3820 |
| Android (android.graphics.Color) | 4289427798 (0xFFAB7956) |
| YUV | 131.9600, -22.6583, 34.2381 |
| Hunter-Lab | 47.9631, 10.2649, 18.8511 |

Details

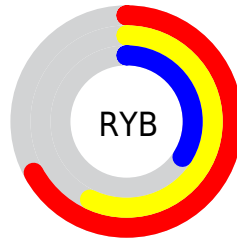
The Android color **4289427798** is a dark color, and the websafe version is hex **996633**. A complement of this color would be **4283861163**, and the grayscale version is **4286874756**.

A 20% lighter version of the original color is **4293176712**, and **4285810728** is the 20% darker color. If you saturate the color by 10%, you get **4289425221**, and if you desaturate by 10%, it is **4289430375**.

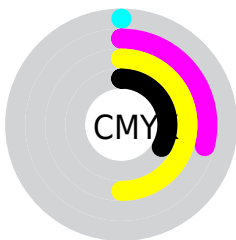
Distribution



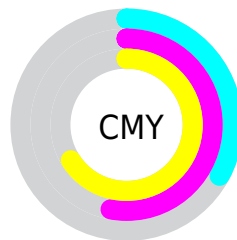
- Red (67%)
- Green (47%)
- Blue (34%)



- Red (67%)
- Yellow (57%)
- Blue (34%)



- Cyan (0%)
- Magenta (29%)
- Yellow (50%)
- Black (33%)



- Cyan (33%)
- Magenta (53%)
- Yellow (66%)

Brightness & Saturation Gradients

These gradients show how the Android color 4289427798 changes by changing the brightness by 10 percent. The first figure shows a shift by +10% for each color and the second figure -10%.

Similar to the brightness gradients but the following saturation gradients show a change of the Android color 4289427798 by changing the saturation by 10% instead.



4289427798



4289427798

4294967295



4287586366



4293176712



4285810728



4294953379



4284101138



4294960574



4282457088



4294967258



4280813056



4294967286



4278190080



4289427798



4289427798



4289425221



4289430375



4289422644



4289432952

■ 4289420067

■ 4289435529

■ 4289417490

■ 4289438106

■ 4289414913

■ 4289440683

■ 4289414656

■ 4289443261

■ 4289445838

■ 4289448415

■ 4289451248

Harmonies

Analogous

The Analogous color harmony consists of three colors that are next to each other on the color wheel.



4290212202



4289427798



4287988302

Triad

The Triadic color harmony groups three colors that are evenly spaced from another and form a triangle on the color wheel.



4289427798



4281700995



4287069618

Complementary

The Complementary color scheme is a pair of colors which are on the opposite of each other on the color wheel.



4289427798



4283861163

Split Complementary

Split-complementary colors differ from the complementary color scheme. The scheme consists of three colors, the original color and two neighbors of the complement color.



4284384953



4289427798



4279407262

Square

The Square scheme is like the rectangle color scheme, but the four colors are evenly spaced on the color wheel.



4289427798



4284059752



4281241266



4289098911

Rectangle

The Rectangle color scheme consists of four colors that form a rectangle on the color wheel.



4289427798



4286810193



4281241266



4286218422

Sweetspot

The Sweet Spot groups the original color and five complimentary colors.



4289427798



4292790973



4289418889



4285555804



4293980400



4285558896

Same Dimension

The Same Dimension uses a secret algorithm to generate beautiful new colors.



4289427798



4292776025



4289438294



4283912782



4288036352



4279699712

Inverse Universe

The Inverse Universe completely reimagines the original color for something new.



4283861163



4284065758



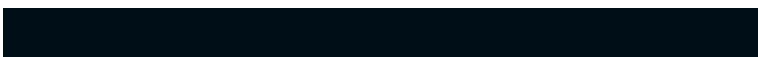
4283850411



4283323223



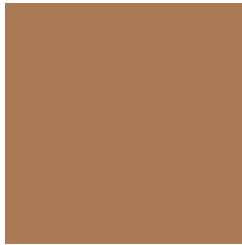
4278213014



4278193687

Previews

White Background



This preview shows how the Android color 4289427798 looks on a white background.

Color Contrast Check

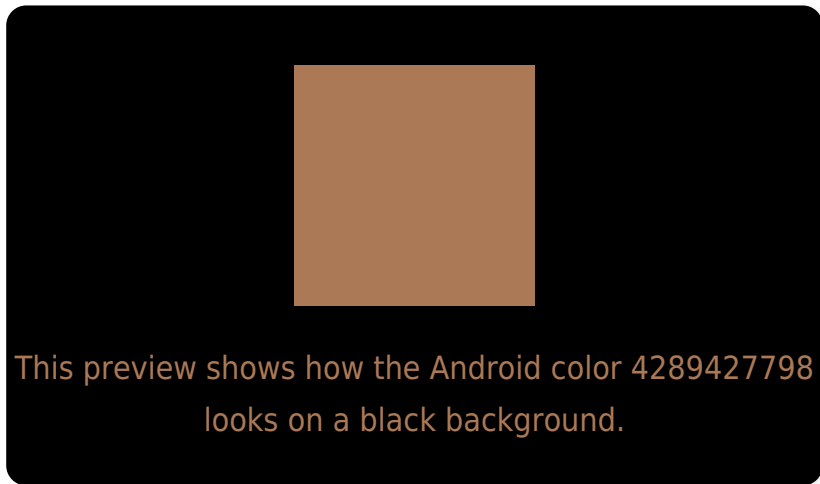
Large Text (above 18pt) WCAG AA ✓ Pass

Any Text WCAG AA ✗ Fail

Large Text (above 18pt) WCAG AAA ✗ Fail

Any Text WCAG AAA ✗ Fail

Black Background



Color Contrast Check

Large Text (above 18pt) WCAG AA ✓ Pass

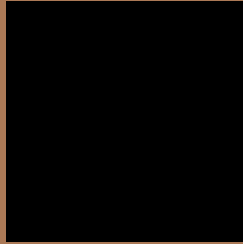
Any Text WCAG AA ✓ Pass

Large Text (above 18pt) WCAG AAA ✓ Pass

Any Text WCAG AAA × Fail

If you want to check with other color combinations, try the [Color Contrast Checker](#).

Android 4289427798 Background



This preview shows how black text looks on a background with the Android color 4289427798.



This preview shows how white text looks on a background with the Android color 4289427798.

Color Blindness Simulation

Color vision deficiency is a very complex topic, and I could not describe the different causes any better than Wikipedia does, so if you want to learn more, you should check out their [article about color blindness](#).

Dichromacy



Original Color
4289427798

Protanopia
4287595610

Deuteranopia
4288642645

Trichromacy



Original Color
4289427798

Protanomaly
4288249945

Deuteranomaly
4288904277

Tritanomaly
4289558127

Monochromacy



Original Color
4289427798

Achromatopsia
4286874756

Achromatomaly
4287791219

CSS Examples

Text

The CSS property to change the color of the text to Android 4289427798 is called "color". The color property can be set on classes, ids or directly on the HTML element.

This example shows how text in the color `rgb(171, 121, 86)` looks like.

```
.text, #text, p{  
    color:rgb(171, 121, 86)  
}
```

If you want to add a text shadow in that color use the text-shadow property, you can generate a text shadow directly with our [CSS Text Shadow Generator](#).

Here you see how black text with a 4 pixel rgb(171, 121, 86) colored shadow looks like.

```
.shadow{ text-shadow: 4px 4px 2px rgb(171, 121, 86) }
```

Border

The CSS property to change the border of an element to Android 4289427798 is called "border". The border property can be set on classes, ids or directly on the HTML element.

This example shows the color as border, it can be applied via the CSS property "border" or "border-color".

```
.border, #border, table{ border:4px solid rgb(171, 121, 86) }
```

If only the border color should be changed use the property `border-color`.

```
.border{ border-color:rgb(171, 121, 86) }
```

If you want to add a box shadow in that color use:

Here you see how a box with a 4 pixel `rgb(171, 121, 86)` colored shadow looks like.

```
.boxshadow{ -moz-box-shadow:4px 4px 4px  
4px rgb(171, 121, 86); -webkit-box-  
shadow:4px 4px 4px 4px rgb(171, 121, 86);  
box-shadow:4px 4px 4px 4px rgb(171, 121,  
86) }
```

Background

The CSS property to change the background color of an element to Android 4289427798 is called "background". The background property can be set on classes, ids or directly on the HTML element.

```
.background, #background, body{  
background: rgb(171, 121, 86) }
```

If only the background color should be changed can be used:

```
.background{ background-color: rgb(171,  
121, 86) }
```

This example shows the color as background, it is applied via the CSS property "background".

To optimize and compress your CSS code, you can use our [online CSS compressor and optimizer](#) based on csstidy. If you want to create a linear or radial gradient as background or border, check our [CSS Gradient Generator](#).

Hey! You found this booklet interesting? Support Converting Colors with the new Membership Option!

The pro membership hides all ads, plus gives you double the colors in the color bucket, and more awesome pro features!

[Learn more, Memberships starting at \\$2.50/m!](#)

**Follow me
on Twitter!**

@ConvertingColor