

Converting Colors

Android(4289429342)

Have a look what the booklet for
Android(4289429342) contains.

Android(4289429342)	3
<i>Conversions</i>	4
<i>Details</i>	6
<i>Harmonies</i>	11
<i>Previews</i>	23
<i>Color Blindness Simulation</i>	26
<i>CSS Examples</i>	29

Color

Android(4289429342)

Conversions

Conversions Part 1

Format	Color
Hex	AB7F5E
RGB	171, 127, 94
RGB Percent	67%, 50%, 37%
CMY	0.3294, 0.5020, 0.6314
CMYK	0.00, 0.26, 0.45, 0.33
HSL	26°, 31%, 52%
HSV	26°, 45%, 67%
XYZ	26.4043, 24.6448, 13.9549
YIQ	136.3940, 36.8170, -0.9350

Conversions

Conversions Part 2

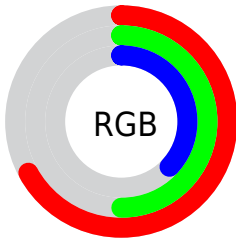
Format	Color
RYB	171, 152, 94
Decimal	11239262
CIELab	56.73, 12.77, 24.56
CIELCh	57, 27.677, 62.529
Yxy	24.6448, 0.4062, 0.3791
Android (android.graphics.Color)	4289429342 (0xFFAB7F5E)
YUV	136.3940, -20.9002, 30.3495
Hunter-Lab	49.6436, 8.0641, 18.0839

Details

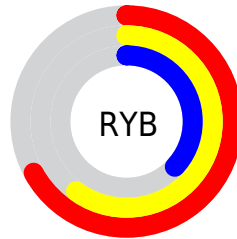
The Android color `4289429342` is a dark color, and the websafe version is hex `CC9966`. A complement of this color would be `4284385963`, and the grayscale version is `4287203721`.

A 20% lighter version of the original color is `4293178513`, and `4285877807` is the 20% darker color. If you saturate the color by 10%, you get `4289426765`, and if you desaturate by 10%, it is `4289431919`.

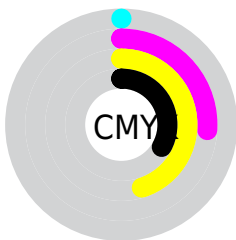
Distribution



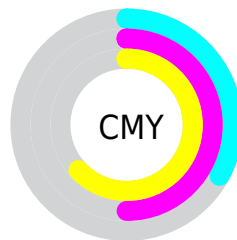
- Red (67%)
- Green (50%)
- Blue (37%)



- Red (67%)
- Yellow (60%)
- Blue (37%)



- Cyan (0%)
- Magenta (26%)
- Yellow (45%)
- Black (33%)



- Cyan (33%)
- Magenta (50%)
- Yellow (63%)

Brightness & Saturation Gradients

These gradients show how the Android color 4289429342 changes by changing the brightness by 10 percent. The first figure shows a shift by +10% for each color and the second figure -10%.

Similar to the brightness gradients but the following saturation gradients show a change of the Android color 4289429342 by changing the saturation by 10% instead.



4289429342



4289429342

4294967295



4287587910



4293178513



4285877807



4294954923



4284102426



4294962375



4282523904



4294967267



4280880384



4278190080



4289429342



4289429342



4289426765



4289431919



4289424188



4289434496

■ 4289421867

■ 4289436817

■ 4289419290

■ 4289439394

■ 4289416712

■ 4289441971

■ 4289415424

■ 4289444549

■ 4289446870

■ 4289449447

■ 4289452024

Harmonies

Analogous

The Analogous color harmony consists of three colors that are next to each other on the color wheel.



4290213999



4289429342



4288120664

Triad

The Triadic color harmony groups three colors that are evenly spaced from another and form a triangle on the color wheel.



4289429342



4282750345



4287529393

Complementary

The Complementary color scheme is a pair of colors which are on the opposite of each other on the color wheel.



4289429342



4284385963

Split Complementary

Split-complementary colors differ from the complementary color scheme. The scheme consists of three colors, the original color and two neighbors of the complement color.



4285237944



4289429342



4281701537

Square

The Square scheme is like the rectangle color scheme, but the four colors are evenly spaced on the color wheel.



4289429342



4284584817



4282880178



4289231263

Rectangle

The Rectangle color scheme consists of four colors that form a rectangle on the color wheel.



4289429342



4287007835



4282880178



4286809268

Sweetspot

The Sweet Spot groups the original color and five complimentary colors.



4289429342



4292791487



4289420939



4285556061



4293980400



4285558896

Same Dimension

The Same Dimension uses a secret algorithm to generate beautiful new colors.



4289429342



4292778342



4289439070



4283912782



4288036864



4279699968

Inverse Universe

The Inverse Universe completely reimagines the original color for something new.



4284385963



4284918750



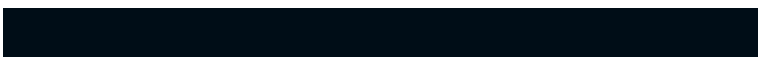
4284376235



4283323223



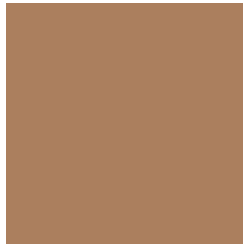
4278212246



4278193431

Previews

White Background



This preview shows how the Android color 4289429342 looks on a white background.

Color Contrast Check

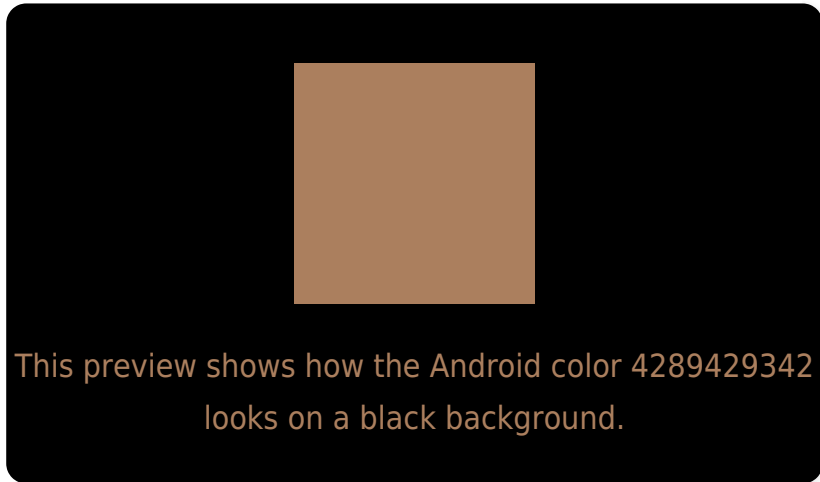
Large Text (above 18pt) WCAG AA ✓ Pass

Any Text WCAG AA ✗ Fail

Large Text (above 18pt) WCAG AAA ✗ Fail

Any Text WCAG AAA ✗ Fail

Black Background



Color Contrast Check

Large Text (above 18pt) WCAG AA ✓ Pass

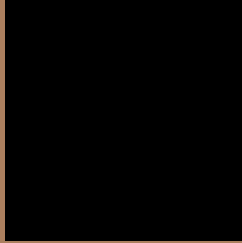
Any Text WCAG AA ✓ Pass

Large Text (above 18pt) WCAG AAA ✓ Pass

Any Text WCAG AAA × Fail

If you want to check with other color combinations, try the [Color Contrast Checker](#).

Android 4289429342 Background



This preview shows how black text looks on a background with the Android color 4289429342.



This preview shows how white text looks on a background with the Android color 4289429342.

Color Blindness Simulation

Color vision deficiency is a very complex topic, and I could not describe the different causes any better than Wikipedia does, so if you want to learn more, you should check out their [article about color blindness](#).

Dichromacy



Original Color
4289429342

Protanopia
4287858786

Deuteranopia
4288905821



Tritanopia
4289624707

Trichromacy



Original Color
4289429342

Protanomaly
4288447841

Deuteranomaly
4289102173

Tritanomaly
4289559670

Monochromacy



Original Color
4289429342

Achromatopsia
4287137928

Achromatomaly
4287989113

CSS Examples

Text

The CSS property to change the color of the text to Android 4289429342 is called "color". The color property can be set on classes, ids or directly on the HTML element.

This example shows how text in the color `rgb(171, 127, 94)` looks like.

```
.text, #text, p{  
    color:rgb(171, 127, 94)  
}
```

If you want to add a text shadow in that color use the text-shadow property, you can generate a text shadow directly with our [CSS Text Shadow Generator](#).

Here you see how black text with a 4 pixel rgb(171, 127, 94) colored shadow looks like.

```
.shadow{ text-shadow: 4px 4px 2px rgb(171, 127, 94) }
```

Border

The CSS property to change the border of an element to Android 4289429342 is called "border". The border property can be set on classes, ids or directly on the HTML element.

This example shows the color as border, it can be applied via the CSS property "border" or "border-color".

```
.border, #border, table{ border:4px solid rgb(171, 127, 94) }
```

If only the border color should be changed use the property `border-color`.

```
.border{ border-color:rgb(171, 127, 94) }
```

If you want to add a box shadow in that color use:

Here you see how a box with a 4 pixel `rgb(171, 127, 94)` colored shadow looks like.

```
.boxshadow{ -moz-box-shadow:4px 4px 4px 4px rgb(171, 127, 94); -webkit-box-shadow:4px 4px 4px 4px rgb(171, 127, 94); box-shadow:4px 4px 4px 4px rgb(171, 127, 94) }
```

Background

The CSS property to change the background color of an element to Android 4289429342 is called "background". The background property can be set on classes, ids or directly on the HTML element.

```
.background, #background, body{  
background: rgb(171, 127, 94) }
```

If only the background color should be changed can be used:

```
.background{ background-color: rgb(171,  
127, 94) }
```

This example shows the color as background, it is applied via the CSS property "background".

To optimize and compress your CSS code, you can use our [online CSS compressor and optimizer](#) based on csstidy. If you want to create a linear or radial gradient as background or border, check our [CSS Gradient Generator](#).

Hey! You found this booklet interesting? Support Converting Colors with the new Membership Option!

The pro membership hides all ads, plus gives you double the colors in the color bucket, and more awesome pro features!

[Learn more, Memberships starting at \\$2.50/m!](#)

**Follow me
on Twitter!**

@ConvertingColor