

# Converting Colors

Android(4289430372)

Have a look what the booklet for  
Android(4289430372) contains.

<b>Android(4289430372)</b> .....	3
<b><i>Conversions</i></b> .....	4
<b><i>Details</i></b> .....	6
<b><i>Harmonies</i></b> .....	11
<b><i>Previews</i></b> .....	23
<b><i>Color Blindness Simulation</i></b> .....	26
<b><i>CSS Examples</i></b> .....	29

# Color

**Android(4289430372)**

# Conversions

## Conversions Part 1

<b>Format</b>	<b>Color</b>
Hex	AB8364
RGB	171, 131, 100
RGB Percent	67%, 51%, 39%
CMY	0.3294, 0.4863, 0.6078
CMYK	0.00, 0.23, 0.42, 0.33
HSL	26°, 30%, 53%
HSV	26°, 42%, 67%
XYZ	27.2111, 25.8106, 15.6044
YIQ	139.4260, 33.7910, -1.1610

# Conversions

## Conversions Part 2

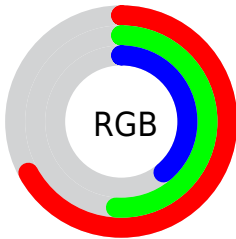
<b>Format</b>	<b>Color</b>
<b>R<sub>YB</sub></b>	171, 155, 100
Decimal	11240292
CIE <sub>Lab</sub>	57.86, 11.19, 22.68
CIE <sub>LCh</sub>	58, 25.287, 63.736
Yxy	25.8106, 0.3965, 0.3761
Android (android.graphics.Color)	4289430372 (0xFFAB8364)
YUV	139.4260, -19.4370, 27.6904
Hunter-Lab	50.8042, 6.6988, 17.3522

# Details

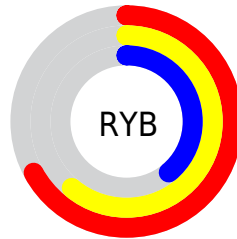
The Android color `4289430372` is a dark color, and the websafe version is hex `CC9966`. A complement of this color would be `4284779691`, and the grayscale version is `4287401100`.

A 20% lighter version of the original color is `4293179543`, and `4285878837` is the 20% darker color. If you saturate the color by 10%, you get `4289427795`, and if you desaturate by 10%, it is `4289432949`.

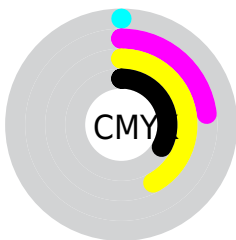
# Distribution



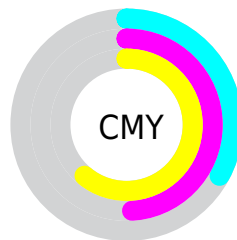
- Red (67%)
- Green (51%)
- Blue (39%)



- Red (67%)
- Yellow (61%)
- Blue (39%)



- Cyan (0%)
- Magenta (23%)
- Yellow (42%)
- Black (33%)



- Cyan (33%)
- Magenta (49%)
- Yellow (61%)

# Brightness & Saturation Gradients

These gradients show how the Android color 4289430372 changes by changing the brightness by 10 percent. The first figure shows a shift by +10% for each color and the second figure -10%.

Similar to the brightness gradients but the following saturation gradients show a change of the Android color 4289430372 by changing the saturation by 10% instead.



 4289430372

 4289430372

4294967295

 4287654476

 4293179543

 4285878837

 4294956210

 4284168991

 4294963405

 4282524936

 4294967274

 4280946944

 4278517760

 4278190080

 4289430372

 4289430372

 4289427795

 4289432949

 4289425474

 4289435270

 4289422897

 4289437847

 4289420320

 4289440424

 4289417998

 4289442745

 4289415936

 4289445323

 4289447644

 4289450221

 4289452798

# Harmonies

## Analogous

The Analogous color harmony consists of three colors that are next to each other on the color wheel.



4290149748



4289430372



4288186975

# Triad

The Triadic color harmony groups three colors that are evenly spaced from another and form a triangle on the color wheel.



4289430372



4283406221



4287792304

# Complementary

The Complementary color scheme is a pair of colors which are on the opposite of each other on the color wheel.



4289430372



4284779691

# Split Complementary

Split-complementary colors differ from the complementary color scheme. The scheme consists of three colors, the original color and two neighbors of the complement color.



4285697207



4289430372



4282750627

# Square

The Square scheme is like the rectangle color scheme, but the four colors are evenly spaced on the color wheel.



4289430372



4284913015



4283732914



4289363615

# Rectangle

The Rectangle color scheme consists of four colors that form a rectangle on the color wheel.



4289430372



4287139682



4283732914



4287137715



# Sweetspot

The Sweet Spot groups the original color and five complimentary colors.



4289430372



4292792259



4289422476



4285556576



4293980400



4285558896



# Same Dimension

The Same Dimension uses a secret algorithm to generate beautiful new colors.



4289430372



4292779887



4289439332



4283912782



4288037376



4279699968



# Inverse Universe

The Inverse Universe completely reimagines the original color for something new.



4284779691



4285509086



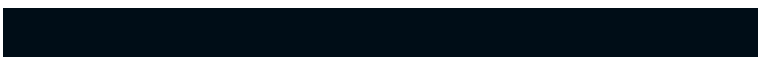
4284770731



4283323223



4278211990

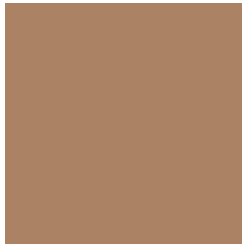


4278193431



# Previews

## White Background



This preview shows how the Android color 4289430372 looks on a white background.

## Color Contrast Check

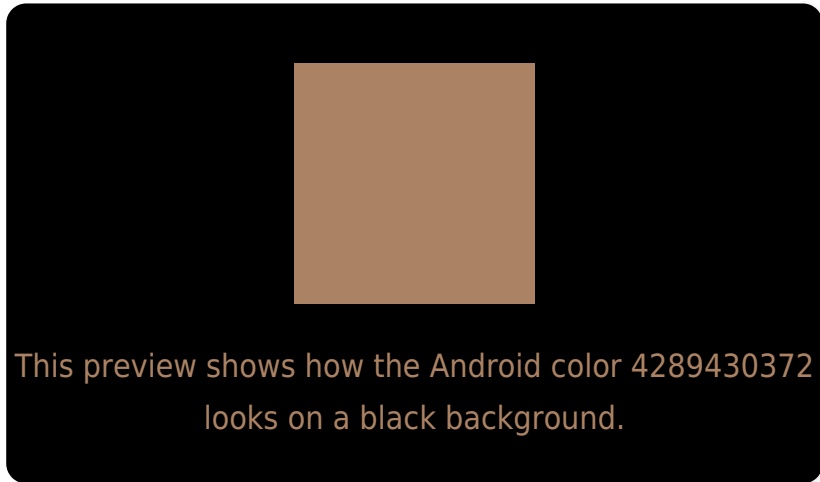
Large Text (above 18pt) WCAG AA ✓ Pass

Any Text WCAG AA ✗ Fail

Large Text (above 18pt) WCAG AAA ✗ Fail

Any Text WCAG AAA ✗ Fail

# Black Background



## Color Contrast Check

Large Text (above 18pt) WCAG AA ✓ Pass

Any Text WCAG AA ✓ Pass

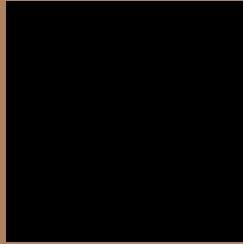
Large Text (above 18pt) WCAG AAA ✓ Pass

Any Text WCAG AAA × Fail

If you want to check with other color combinations, try the [Color Contrast Checker](#).



## Android 4289430372 Background



This preview shows how black text looks on a background with the Android color 4289430372.



This preview shows how white text looks on a background with the Android color 4289430372.

# Color Blindness Simulation

Color vision deficiency is a very complex topic, and I could not describe the different causes any better than Wikipedia does, so if you want to learn more, you should check out their [article about color blindness](#).

## Dichromacy



**Original Color**

4289430372

**Protanopia**

4287990632

**Deuteranopia**

4289037668



# Trichromacy



**Original Color**  
4289430372

**Protanomaly**  
4288514151

**Deuteranomaly**  
4289168484

**Tritanomaly**  
4289560699

# Monochromacy



**Original Color**  
4289430372

**Achromatopsia**  
4287335307

**Achromatomaly**  
4288120957

# CSS Examples

## Text

The CSS property to change the color of the text to Android 4289430372 is called "color". The color property can be set on classes, ids or directly on the HTML element.

This example shows how text in the color `rgb(171, 131, 100)` looks like.

```
.text, #text, p{  
    color:rgb(171, 131, 100)  
}
```

If you want to add a text shadow in that color use the text-shadow property, you can generate a text shadow directly with our [CSS Text Shadow Generator](#).

Here you see how black text with a 4 pixel rgb(171, 131, 100) colored shadow looks like.

```
.shadow{ text-shadow: 4px 4px 2px rgb(171, 131, 100) }
```

## Border

The CSS property to change the border of an element to Android 4289430372 is called "border". The border property can be set on classes, ids or directly on the HTML element.

This example shows the color as border, it can be applied via the CSS property "border" or "border-color".

```
.border, #border, table{ border:4px solid rgb(171, 131, 100) }
```

If only the border color should be changed use the property `border-color`.

```
.border{ border-color:rgb(171, 131, 100) }
```

If you want to add a box shadow in that color use:

Here you see how a box with a 4 pixel `rgb(171, 131, 100)` colored shadow looks like.

```
.boxshadow{ -moz-box-shadow:4px 4px 4px  
4px rgb(171, 131, 100); -webkit-box-  
shadow:4px 4px 4px 4px rgb(171, 131, 100);  
box-shadow:4px 4px 4px 4px rgb(171, 131,  
100) }
```

# Background

The CSS property to change the background color of an element to Android 4289430372 is called "background". The background property can be set on classes, ids or directly on the HTML element.

```
.background, #background, body{  
background: rgb(171, 131, 100) }
```

If only the background color should be changed can be used:

```
.background{ background-color: rgb(171,  
131, 100) }
```

This example shows the color as background, it is applied via the CSS property "background".

To optimize and compress your CSS code, you can use our [online CSS compressor and optimizer](#) based on csstidy. If you want to create a linear or radial gradient as background or border, check our [CSS Gradient Generator](#).



Hey! You found this booklet interesting? Support Converting Colors with the new Membership Option!

The pro membership hides all ads, plus gives you double the colors in the color bucket, and more awesome pro features!

**[Learn more, Memberships starting at \\$2.50/m!](#)**

**Follow me  
on Twitter!**

@ConvertingColor