

Converting Colors

Android(4289431403)

Have a look what the booklet for
Android(4289431403) contains.

Android(4289431403)	3
<i>Conversions</i>	4
<i>Details</i>	6
<i>Harmonies</i>	11
<i>Previews</i>	23
<i>Color Blindness Simulation</i>	26
<i>CSS Examples</i>	29

Color

Android(4289431403)

Conversions

Conversions Part 1

Format	Color
Hex	AB876B
RGB	171, 135, 107
RGB Percent	67%, 53%, 42%
CMY	0.3294, 0.4706, 0.5804
CMYK	0.00, 0.21, 0.37, 0.33
HSL	26°, 28%, 55%
HSV	26°, 37%, 67%
XYZ	28.1124, 27.0474, 17.6489
YIQ	142.5720, 30.4440, -1.0760

Conversions

Conversions Part 2

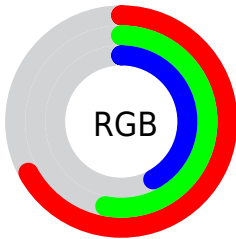
Format	Color
R_{YB}	171, 157, 107
Decimal	11241323
CIE Lab	59.02, 9.78, 20.29
CIE LCh	59, 22.529, 64.263
Yxy	27.0474, 0.3861, 0.3715
Android (android.graphics.Color)	4289431403 (0xFFAB876B)
YUV	142.5720, -17.5370, 24.9314
Hunter-Lab	52.0071, 5.4755, 16.2846

Details

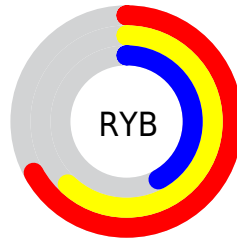
The Android color `4289431403` is a dark color, and the websafe version is hex `CC9966`. A complement of this color would be `4285239211`, and the grayscale version is `4287598479`.

A 20% lighter version of the original color is `4293115039`, and `4285879611` is the 20% darker color. If you saturate the color by 10%, you get `4289428826`, and if you desaturate by 10%, it is `4289433980`.

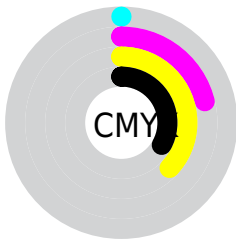
Distribution



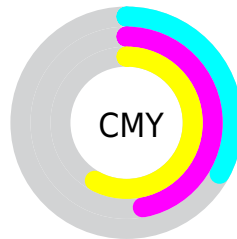
- Red (67%)
- Green (53%)
- Blue (42%)



- Red (67%)
- Yellow (62%)
- Blue (42%)



- Cyan (0%)
- Magenta (21%)
- Yellow (37%)
- Black (33%)



- Cyan (33%)
- Magenta (47%)
- Yellow (58%)

Brightness & Saturation Gradients

These gradients show how the Android color 4289431403 changes by changing the brightness by 10 percent. The first figure shows a shift by +10% for each color and the second figure -10%.

Similar to the brightness gradients but the following saturation gradients show a change of the Android color 4289431403 by changing the saturation by 10% instead.

 4289431403

 4289431403

4294967295

 4287655507

 4293115039

 4285879611

 4294957242

 4284235301

 4294964437

 4282591248

 4294967282

 4281078784

 4279107584

 4278190080

 4289431403

 4289431403

 4289428826

 4289433980

■ 4289426505

■ 4289436301

■ 4289423928

■ 4289438878

■ 4289421607

■ 4289441199

■ 4289419030

■ 4289443776

■ 4289416452

■ 4289446354

■ 4289415936

■ 4289448675

■ 4289451252

■ 4289453823

Harmonies

Analogous

The Analogous color harmony consists of three colors that are next to each other on the color wheel.



4290085497



4289431403



4288319079

Triad

The Triadic color harmony groups three colors that are evenly spaced from another and form a triangle on the color wheel.



4289431403



4284127632



4287989935

Complementary

The Complementary color scheme is a pair of colors which are on the opposite of each other on the color wheel.



4289431403



4285239211

Split Complementary

Split-complementary colors differ from the complementary color scheme. The scheme consists of three colors, the original color and two neighbors of the complement color.



4286222261



4289431403



4283668644

Square

The Square scheme is like the rectangle color scheme, but the four colors are evenly spaced on the color wheel.



4289431403



4285372540



4284519857



4289364640

Rectangle

The Rectangle color scheme consists of four colors that form a rectangle on the color wheel.



4289431403



4287402602



4284519857



4287400626

Sweetspot

The Sweet Spot groups the original color and five complimentary colors.



4289431403



4292792517



4289424271



4285556834



4293980400



4285558896

Same Dimension

The Same Dimension uses a secret algorithm to generate beautiful new colors.



4289431403



4292781690



4289439595



4283912782



4288037376



4279699968

Inverse Universe

The Inverse Universe completely reimagines the original color for something new.



4285239211



4286231262



4285231019



4283323223



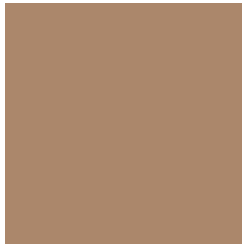
4278211990



4278193431

Previews

White Background



This preview shows how the Android color 4289431403 looks on a white background.

Color Contrast Check

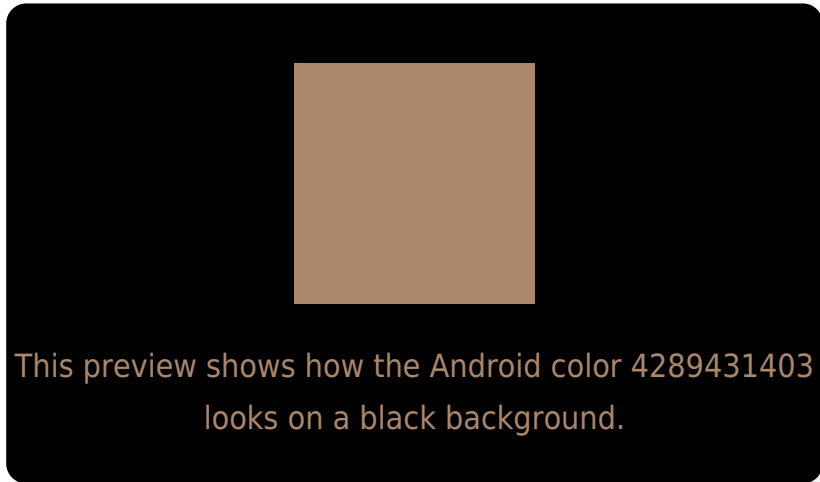
Large Text (above 18pt) WCAG AA ✓ Pass

Any Text WCAG AA ✗ Fail

Large Text (above 18pt) WCAG AAA ✗ Fail

Any Text WCAG AAA ✗ Fail

Black Background



Color Contrast Check

Large Text (above 18pt) WCAG AA ✓ Pass

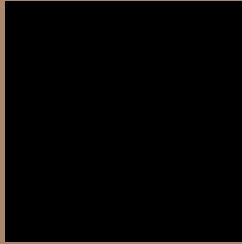
Any Text WCAG AA ✓ Pass

Large Text (above 18pt) WCAG AAA ✓ Pass

Any Text WCAG AAA × Fail

If you want to check with other color combinations, try the [Color Contrast Checker](#).

Android 4289431403 Background



This preview shows how black text looks on a background with the Android color 4289431403.



This preview shows how white text looks on a background with the Android color 4289431403.

Color Blindness Simulation

Color vision deficiency is a very complex topic, and I could not describe the different causes any better than Wikipedia does, so if you want to learn more, you should check out their [article about color blindness](#).

Dichromacy



Original Color

4289431403

Protanopia

4288188014

Deuteranopia

4289235051

Trichromacy



Original Color
4289431403

Protanomaly
4288645997

Deuteranomaly
4289300587

Tritanomaly
4289561728

Monochromacy



Original Color
4289431403

Achromatopsia
4287598479

Achromatomaly
4288253058

CSS Examples

Text

The CSS property to change the color of the text to Android 4289431403 is called "color". The color property can be set on classes, ids or directly on the HTML element.

This example shows how text in the color `rgb(171, 135, 107)` looks like.

```
.text, #text, p{  
    color:rgb(171, 135, 107)  
}
```

If you want to add a text shadow in that color use the text-shadow property, you can generate a text shadow directly with our [CSS Text Shadow Generator](#).

Here you see how black text with a 4 pixel rgb(171, 135, 107) colored shadow looks like.

```
.shadow{ text-shadow: 4px 4px 2px rgb(171, 135, 107) }
```

Border

The CSS property to change the border of an element to Android 4289431403 is called "border". The border property can be set on classes, ids or directly on the HTML element.

This example shows the color as border, it can be applied via the CSS property "border" or "border-color".

```
.border, #border, table{ border:4px solid rgb(171, 135, 107) }
```

If only the border color should be changed use the property `border-color`.

```
.border{ border-color:rgb(171, 135, 107) }
```

If you want to add a box shadow in that color use:

Here you see how a box with a 4 pixel `rgb(171, 135, 107)` colored shadow looks like.

```
.boxshadow{ -moz-box-shadow:4px 4px 4px  
4px rgb(171, 135, 107); -webkit-box-  
shadow:4px 4px 4px 4px rgb(171, 135, 107);  
box-shadow:4px 4px 4px 4px rgb(171, 135,  
107) }
```

Background

The CSS property to change the background color of an element to Android 4289431403 is called "background". The background property can be set on classes, ids or directly on the HTML element.

```
.background, #background, body{  
background: rgb(171, 135, 107) }
```

If only the background color should be changed can be used:

```
.background{ background-color: rgb(171,  
135, 107) }
```

This example shows the color as background, it is applied via the CSS property "background".

To optimize and compress your CSS code, you can use our [online CSS compressor and optimizer](#) based on csstidy. If you want to create a linear or radial gradient as background or border, check our [CSS Gradient Generator](#).

Hey! You found this booklet interesting? Support Converting Colors with the new Membership Option!

The pro membership hides all ads, plus gives you double the colors in the color bucket, and more awesome pro features!

[Learn more, Memberships starting at \\$2.50/m!](#)

**Follow me
on Twitter!**

@ConvertingColor