

# Converting Colors

Android(4289479522)

Have a look what the booklet for  
Android(4289479522) contains.

|  |    |
|--|----|
| <b>Android(4289479522)</b> .....               | 3  |
| <b><i>Conversions</i></b> .....                | 4  |
| <b><i>Details</i></b> .....                    | 6  |
| <b><i>Harmonies</i></b> .....                  | 11 |
| <b><i>Previews</i></b> .....                   | 23 |
| <b><i>Color Blindness Simulation</i></b> ..... | 26 |
| <b><i>CSS Examples</i></b> .....               | 29 |

# Color

**Android(4289479522)**

# Conversions

## Conversions Part 1

| <b>Format</b> | <b>Color</b>               |
|---------------|----------------------------|
| Hex           | AC4362                     |
| RGB           | 172, 67, 98                |
| RGB Percent   | 67%, 26%, 38%              |
| CMY           | 0.3255, 0.7373, 0.6157     |
| CMYK          | 0.00, 0.61, 0.43, 0.33     |
| HSL           | 342°, 44%, 47%             |
| HSV           | 342°, 61%, 67%             |
| XYZ           | 21.2250, 13.6668, 13.0745  |
| YIQ           | 101.9290, 52.6290, 31.9010 |

# Conversions

## Conversions Part 2

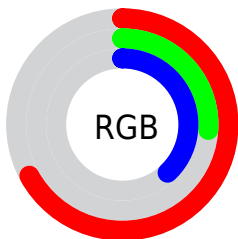
| <b>Format</b>                       | <b>Color</b>                  |
|-------------------------------------|-------------------------------|
| <b>R<sub>YB</sub></b>               | 172, 67, 98                   |
| Decimal                             | 11289442                      |
| CIE <sub>Lab</sub>                  | 43.75, 45.80, 4.35            |
| CIE <sub>LCh</sub>                  | 44, 46.005, 5.425             |
| Yxy                                 | 13.6668, 0.4425,<br>0.2849    |
| Android<br>(android.graphics.Color) | 4289479522<br>(0xFFAC4362)    |
| YUV                                 | 101.9290, -1.9370,<br>61.4523 |
| Hunter-Lab                          | 36.9686, 37.7881,<br>4.9092   |

# Details

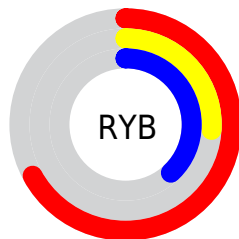
The Android color `4289479522` is a dark color, and the websafe version is hex `993366`. A complement of this color would be `4282625165`, and the grayscale version is `4284900966`.

A 20% lighter version of the original color is `4293359765`, and `4285728052` is the 20% darker color. If you saturate the color by 10%, you get `4289475158`, and if you desaturate by 10%, it is `4289483886`.

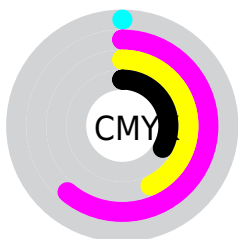
# Distribution



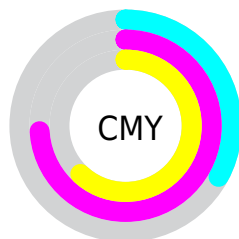
- Red (67%)
- Green (26%)
- Blue (38%)



- Red (67%)
- Yellow (26%)
- Blue (38%)



- Cyan (0%)
- Magenta (61%)
- Yellow (43%)
- Black (33%)



- Cyan (33%)
- Magenta (74%)
- Yellow (62%)

# Brightness & Saturation Gradients

These gradients show how the Android color 4289479522 changes by changing the brightness by 10 percent. The first figure shows a shift by +10% for each color and the second figure -10%.

Similar to the brightness gradients but the following saturation gradients show a change of the Android color 4289479522 by changing the saturation by 10% instead.





4289479522



4289479522

4294967295



4287572042



4293359765



4285728052



4294939567



4283957279



4294946762



4282253317



4294953959



4280352769



4294961151



4278190080



4289479522



4289479522



4289475158



4289483886



4289470794



4289488250

 4289466174

 4289492870

 4289462323

 4289497234

 4289501599

 4289505963

 4289510327

 4289514947

 4289519311

# Harmonies

## Analogous

The Analogous color harmony consists of three colors that are next to each other on the color wheel.



4288367240



4289479522



4289219389

# Triad

The Triadic color harmony groups three colors that are evenly spaced from another and form a triangle on the color wheel.



4289479522



4283265572



4278219948

# Complementary

The Complementary color scheme is a pair of colors which are on the opposite of each other on the color wheel.



4289479522



4282625165

# Split Complementary

Split-complementary colors differ from the complementary color scheme. The scheme consists of three colors, the original color and two neighbors of the complement color.



4278221203



4289479522



4278220614

# Square

The Square scheme is like the rectangle color scheme, but the four colors are evenly spaced on the color wheel.



4289479522



4285884434



4278221421



4279790004

# Rectangle

The Rectangle color scheme consists of four colors that form a rectangle on the color wheel.



4289479522



4288435496



4278221421



4278220454



# Sweetspot

The Sweet Spot groups the original color and five complimentary colors.



4289479522



4292917444



4287447980



4285552735



4293980400



4285558896



# Same Dimension

The Same Dimension uses a secret algorithm to generate beautiful new colors.



4289479522



4292885869



4289484867



4283911761



4288020524



4279697415



# Inverse Universe

The Inverse Universe completely reimagines the original color for something new.



4289479522



4292885869



4282619820



4283911761



4288020524

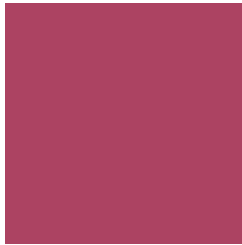


4279697415



# Previews

## White Background



This preview shows how the Android color 4289479522 looks on a white background.

## Color Contrast Check

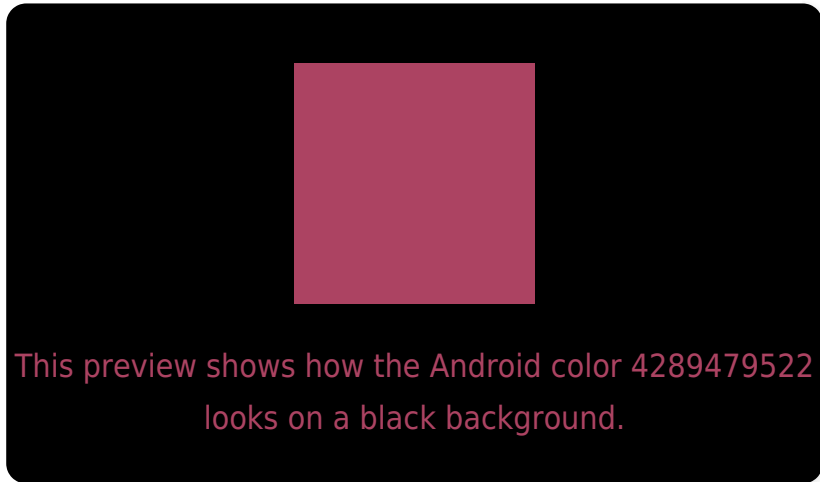
Large Text (above 18pt) WCAG AA ✓ Pass

Any Text WCAG AA ✓ Pass

Large Text (above 18pt) WCAG AAA ✓ Pass

Any Text WCAG AAA × Fail

# Black Background



## Color Contrast Check

Large Text (above 18pt) WCAG AA ✓ Pass

Any Text WCAG AA × Fail

Large Text (above 18pt) WCAG AAA × Fail

Any Text WCAG AAA × Fail

If you want to check with other color combinations, try the [Color Contrast Checker](#).



## Android 4289479522 Background



This preview shows how black text looks on a background with the Android color 4289479522.

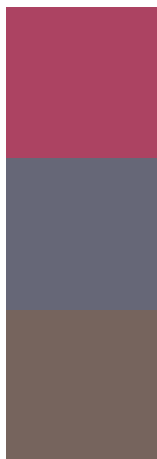


This preview shows how white text looks on a background with the Android color 4289479522.

# Color Blindness Simulation

Color vision deficiency is a very complex topic, and I could not describe the different causes any better than Wikipedia does, so if you want to learn more, you should check out their [article about color blindness](#).

## Dichromacy



**Original Color**  
4289479522

**Protanopia**  
4284901239

**Deuteranopia**  
4285949021



# Trichromacy



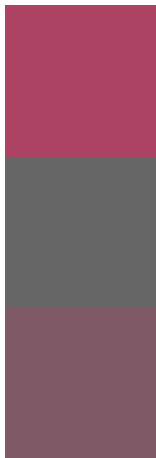
**Original Color**  
4289479522

**Protanomaly**  
4286536303

**Deuteranomaly**  
4287256671

**Tritanomaly**  
4289414740

# Monochromacy



**Original Color**  
4289479522

**Achromatopsia**  
4284900966

**Achromatomaly**  
4286536037

# CSS Examples

## Text

The CSS property to change the color of the text to Android 4289479522 is called "color". The color property can be set on classes, ids or directly on the HTML element.

This example shows how text in the color `rgb(172, 67, 98)` looks like.

```
.text, #text, p{  
    color:rgb(172, 67, 98)  
}
```

If you want to add a text shadow in that color use the text-shadow property, you can generate a text shadow directly with our [CSS Text Shadow Generator](#).

Here you see how black text with a 4 pixel rgb(172, 67, 98) colored shadow looks like.

```
.shadow{ text-shadow: 4px 4px 2px rgb(172, 67, 98) }
```

## Border

The CSS property to change the border of an element to Android 4289479522 is called "border". The border property can be set on classes, ids or directly on the HTML element.

This example shows the color as border, it can be applied via the CSS property "border" or "border-color".

```
.border, #border, table{ border:4px solid rgb(172, 67, 98) }
```

If only the border color should be changed use the property border-color.

```
.border{ border-color:rgb(172, 67, 98) }
```

If you want to add a box shadow in that color use:

Here you see how a box with a 4 pixel rgb(172, 67, 98) colored shadow looks like.

```
.boxshadow{ -moz-box-shadow:4px 4px 4px  
4px rgb(172, 67, 98); -webkit-box-  
shadow:4px 4px 4px 4px rgb(172, 67, 98);  
box-shadow:4px 4px 4px 4px rgb(172, 67,  
98) }
```

# Background

The CSS property to change the background color of an element to Android 4289479522 is called "background". The background property can be set on classes, ids or directly on the HTML element.

```
.background, #background, body{  
background: rgb(172, 67, 98) }
```

If only the background color should be changed can be used:

```
.background{ background-color: rgb(172, 67,  
98) }
```

This example shows the color as background, it is applied via the CSS property "background".

To optimize and compress your CSS code, you can use our [online CSS compressor and optimizer](#) based on csstidy. If you want to create a linear or radial gradient as background or border, check our [CSS Gradient Generator](#).



Hey! You found this booklet interesting? Support Converting Colors with the new Membership Option!

The pro membership hides all ads, plus gives you double the colors in the color bucket, and more awesome pro features!

**[Learn more, Memberships starting at \\$2.50/m!](#)**

**Follow me  
on Twitter!**

@ConvertingColor