

Converting Colors

Android(4289490765)

Have a look what the booklet for
Android(4289490765) contains.

Android(4289490765)	3
<i>Conversions</i>	4
<i>Details</i>	6
<i>Harmonies</i>	11
<i>Previews</i>	23
<i>Color Blindness Simulation</i>	26
<i>CSS Examples</i>	29

Color

Android(4289490765)

Conversions

Conversions Part 1

Format	Color
Hex	AC6F4D
RGB	172, 111, 77
RGB Percent	67%, 44%, 30%
CMY	0.3255, 0.5647, 0.6980
CMYK	0.00, 0.35, 0.55, 0.33
HSL	21°, 38%, 49%
HSV	21°, 55%, 67%
XYZ	24.0373, 20.6754, 9.7450
YIQ	125.3630, 47.2700, 2.3580

Conversions

Conversions Part 2

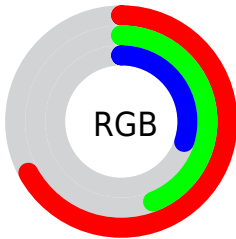
Format	Color
RYB	172, 130, 77
Decimal	11300685
CIELab	52.59, 20.54, 28.80
CIELCh	53, 35.373, 54.510
Yxy	20.6754, 0.4414, 0.3797
Android (android.graphics.Color)	4289490765 (0xFFAC6F4D)
YUV	125.3630, -23.8430, 40.9006
Hunter-Lab	45.4702, 14.7891, 19.1223

Details

The Android color `4289490765` is a dark color, and the websafe version is hex `996633`. A complement of this color would be `4283271852`, and the grayscale version is `4286479998`.

A 20% lighter version of the original color is `4293305215`, and `4285808415` is the 20% darker color. If you saturate the color by 10%, you get `4289487932`, and if you desaturate by 10%, it is `4289493598`.

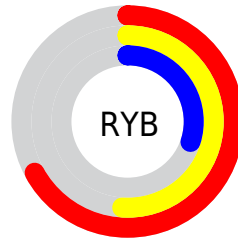
Distribution



Red (67%)

Green (44%)

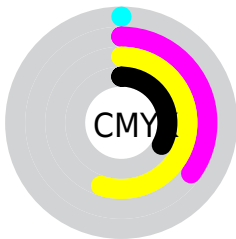
Blue (30%)



Red (67%)

Yellow (51%)

Blue (30%)

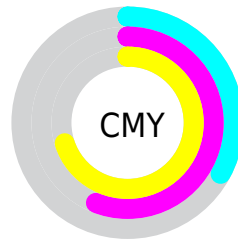


Cyan (0%)

Magenta (35%)

Yellow (55%)

Black (33%)



Cyan (33%)

Magenta (56%)

Yellow (70%)

Brightness & Saturation Gradients

These gradients show how the Android color 4289490765 changes by changing the brightness by 10 percent. The first figure shows a shift by +10% for each color and the second figure -10%.

Similar to the brightness gradients but the following saturation gradients show a change of the Android color 4289490765 by changing the saturation by 10% instead.



4289490765



4289490765

4294967295



4287649334



4293305215



4285808415



4294950553



4284033033



4294957748



4282323456



4294965199



4280745984



4294967276



4278190080



4289490765



4289490765



4289487932



4289493598



4289485099



4289496431

■ 4289482265

■ 4289499265

■ 4289479432

■ 4289502098

■ 4289478144

■ 4289504931

■ 4289507764

■ 4289510597

■ 4289513431

■ 4289516264

Harmonies

Analogous

The Analogous color harmony consists of three colors that are next to each other on the color wheel.



4290209638



4289490765



4287986240

Triad

The Triadic color harmony groups three colors that are evenly spaced from another and form a triangle on the color wheel.



4289490765



4280323447



4286085301

Complementary

The Complementary color scheme is a pair of colors which are on the opposite of each other on the color wheel.



4289490765



4283271852

Split Complementary

Split-complementary colors differ from the complementary color scheme. The scheme consists of three colors, the original color and two neighbors of the complement color.



4282483386



4289490765



4278226326

Square

The Square scheme is like the rectangle color scheme, but the four colors are evenly spaced on the color wheel.



4289490765



4283664985



4278225582



4288572577

Rectangle

The Rectangle color scheme consists of four colors that form a rectangle on the color wheel.



4289490765



4286742593



4278225582



4285037752

Sweetspot

The Sweet Spot groups the original color and five complimentary colors.



4289490765



4292921530



4289482123



428555290



4293980400



4285558896

Same Dimension

The Same Dimension uses a secret algorithm to generate beautiful new colors.



4289490765



4292903244



4289502797



4283912526



4288034304



4279699456

Inverse Universe

The Inverse Universe completely reimagines the original color for something new.



4283271852



4283214816



4283259820



4283323479



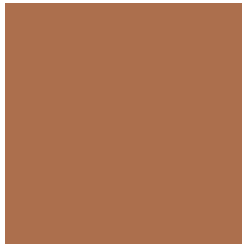
4278215062



4278193943

Previews

White Background



This preview shows how the Android color 4289490765 looks on a white background.

Color Contrast Check

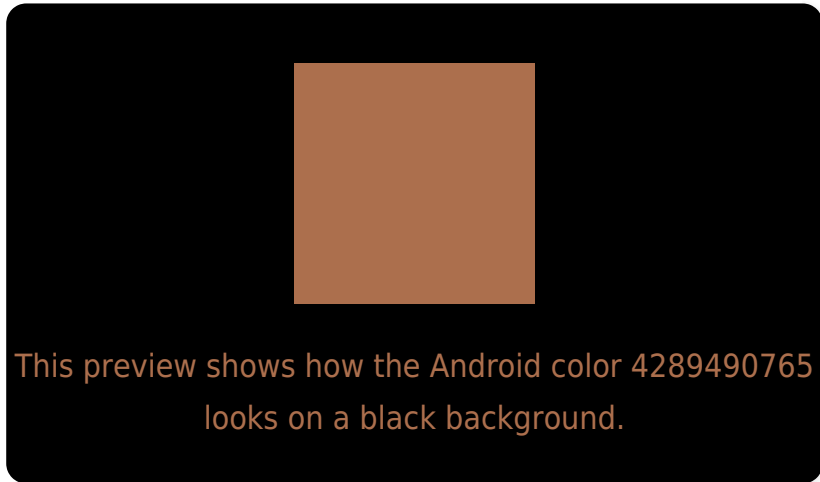
Large Text (above 18pt) WCAG AA ✓ Pass

Any Text WCAG AA ✗ Fail

Large Text (above 18pt) WCAG AAA ✗ Fail

Any Text WCAG AAA ✗ Fail

Black Background



Color Contrast Check

Large Text (above 18pt) WCAG AA ✓ Pass

Any Text WCAG AA ✓ Pass

Large Text (above 18pt) WCAG AAA ✓ Pass

Any Text WCAG AAA × Fail

If you want to check with other color combinations, try the [Color Contrast Checker](#).

Android 4289490765 Background



This preview shows how black text looks on a background with the Android color 4289490765.



This preview shows how white text looks on a background with the Android color 4289490765.

Color Blindness Simulation

Color vision deficiency is a very complex topic, and I could not describe the different causes any better than Wikipedia does, so if you want to learn more, you should check out their [article about color blindness](#).

Dichromacy



Original Color
4289490765

Protanopia
4287200851

Deuteranopia
4288247883



Tritanopia
4289686130

Trichromacy



Original Color
4289490765

Protanomaly
4288051537

Deuteranomaly
4288705868

Tritanomaly
4289621093

Monochromacy



Original Color
4289490765

Achromatopsia
4286414205

Achromatomaly
4287527020

CSS Examples

Text

The CSS property to change the color of the text to Android 4289490765 is called "color". The color property can be set on classes, ids or directly on the HTML element.

This example shows how text in the color `rgb(172, 111, 77)` looks like.

```
.text, #text, p{  
    color:rgb(172, 111, 77)  
}
```

If you want to add a text shadow in that color use the text-shadow property, you can generate a text shadow directly with our [CSS Text Shadow Generator](#).

Here you see how black text with a 4 pixel rgb(172, 111, 77) colored shadow looks like.

```
.shadow{ text-shadow: 4px 4px 2px rgb(172, 111, 77) }
```

Border

The CSS property to change the border of an element to Android 4289490765 is called "border". The border property can be set on classes, ids or directly on the HTML element.

This example shows the color as border, it can be applied via the CSS property "border" or "border-color".

```
.border, #border, table{ border:4px solid rgb(172, 111, 77) }
```

If only the border color should be changed use the property `border-color`.

```
.border{ border-color:rgb(172, 111, 77) }
```

If you want to add a box shadow in that color use:

Here you see how a box with a 4 pixel `rgb(172, 111, 77)` colored shadow looks like.

```
.boxshadow{ -moz-box-shadow:4px 4px 4px  
4px rgb(172, 111, 77); -webkit-box-  
shadow:4px 4px 4px 4px rgb(172, 111, 77);  
box-shadow:4px 4px 4px 4px rgb(172, 111,  
77) }
```

Background

The CSS property to change the background color of an element to Android 4289490765 is called "background". The background property can be set on classes, ids or directly on the HTML element.

```
.background, #background, body{  
background: rgb(172, 111, 77) }
```

If only the background color should be changed can be used:

```
.background{ background-color: rgb(172,  
111, 77) }
```

This example shows the color as background, it is applied via the CSS property "background".

To optimize and compress your CSS code, you can use our [online CSS compressor and optimizer](#) based on csstidy. If you want to create a linear or radial gradient as background or border, check our [CSS Gradient Generator](#).

Hey! You found this booklet interesting? Support Converting Colors with the new Membership Option!

The pro membership hides all ads, plus gives you double the colors in the color bucket, and more awesome pro features!

[Learn more, Memberships starting at \\$2.50/m!](#)

**Follow me
on Twitter!**

@ConvertingColor