

Converting Colors

Android(4289493369)

Have a look what the booklet for
Android(4289493369) contains.

Android(4289493369)	3
<i>Conversions</i>	4
<i>Details</i>	6
<i>Harmonies</i>	11
<i>Previews</i>	23
<i>Color Blindness Simulation</i>	26
<i>CSS Examples</i>	29

Color

Android(4289493369)

Conversions

Conversions Part 1

Format	Color
Hex	AC7979
RGB	172, 121, 121
RGB Percent	67%, 47%, 47%
CMY	0.3255, 0.5255, 0.5255
CMYK	0.00, 0.30, 0.30, 0.33
HSL	0°, 24%, 57%
HSV	0°, 30%, 67%
XYZ	27.3018, 23.8259, 21.2491
YIQ	136.2490, 30.3960, 10.8120

Conversions

Conversions Part 2

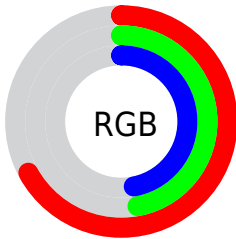
Format	Color
R_{YB}	172, 121, 121
Decimal	11303289
CIE _{Lab}	55.91, 19.93, 7.98
CIE _{LCh}	56, 21.472, 21.816
Yxy	23.8259, 0.3772, 0.3292
Android (android.graphics.Color)	4289493369 (0xFFAC7979)
YUV	136.2490, -7.5178, 31.3536
Hunter-Lab	48.8118, 14.4196, 8.3577

Details

The Android color `4289493369` is a dark color, and the websafe version is hex `996666`. A complement of this color would be `4286164140`, and the grayscale version is `4287137928`.

A 20% lighter version of the original color is `4293177005`, and `4285941833` is the 20% darker color. If you saturate the color by 10%, you get `4289489000`, and if you desaturate by 10%, it is `4289497738`.

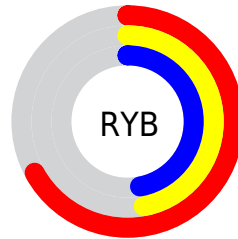
Distribution



Red (67%)

Green (47%)

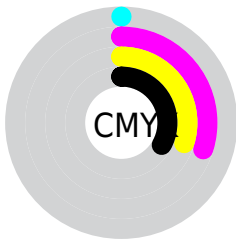
Blue (47%)



Red (67%)

Yellow (47%)

Blue (47%)

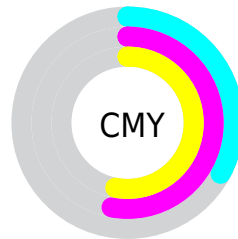


Cyan (0%)

Magenta (30%)

Yellow (30%)

Black (33%)



Cyan (33%)

Magenta (53%)

Yellow (53%)

Brightness & Saturation Gradients

These gradients show how the Android color 4289493369 changes by changing the brightness by 10 percent. The first figure shows a shift by +10% for each color and the second figure -10%.

Similar to the brightness gradients but the following saturation gradients show a change of the Android color 4289493369 by changing the saturation by 10% instead.



4289493369



4289493369

4294967295



4287717472



4293177005



4285941833



4294953417



4284297522



4294960613



4282653469



4281140227



4278583296



4278190080



4289493369



4289493369



4289489000



4289497738

 4289484631

 4289502107

 4289480005

 4289506733

 4289475636

 4289511102

 4289471267

 4289515471

 4289466898

 4289519840

 4289462529

 4289524209

 4289462272

 4289527807

Harmonies

Analogous

The Analogous color harmony consists of three colors that are next to each other on the color wheel.



4289231244



4289493369



4289101161

Triad

The Triadic color harmony groups three colors that are evenly spaced from another and form a triangle on the color wheel.



4289493369



4285566574



4285041066

Complementary

The Complementary color scheme is a pair of colors which are on the opposite of each other on the color wheel.



4289493369



4286164140

Split Complementary

Split-complementary colors differ from the complementary color scheme. The scheme consists of three colors, the original color and two neighbors of the complement color.



4283731619



4289493369



4284256384

Square

The Square scheme is like the rectangle color scheme, but the four colors are evenly spaced on the color wheel.



4289493369



4286941539



4283404435



4286743464

Rectangle

The Rectangle color scheme consists of four colors that form a rectangle on the color wheel.



4289493369



4288577891



4283404435



4284517289

Sweetspot

The Sweet Spot groups the original color and five complimentary colors.



4289493369



4292922572



4289493420



4285555812



4293980400



4285558896

Same Dimension

The Same Dimension uses a secret algorithm to generate beautiful new colors.



4289493369



4292907152



4289500025



4283911758



4288020480



4279697408

Inverse Universe

The Inverse Universe completely reimagines the original color for something new.



4286164140



4287684832



4286157740



4283324247



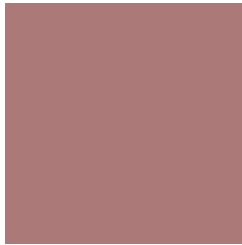
4278228630



4278195991

Previews

White Background



This preview shows how the Android color 4289493369 looks on a white background.

Color Contrast Check

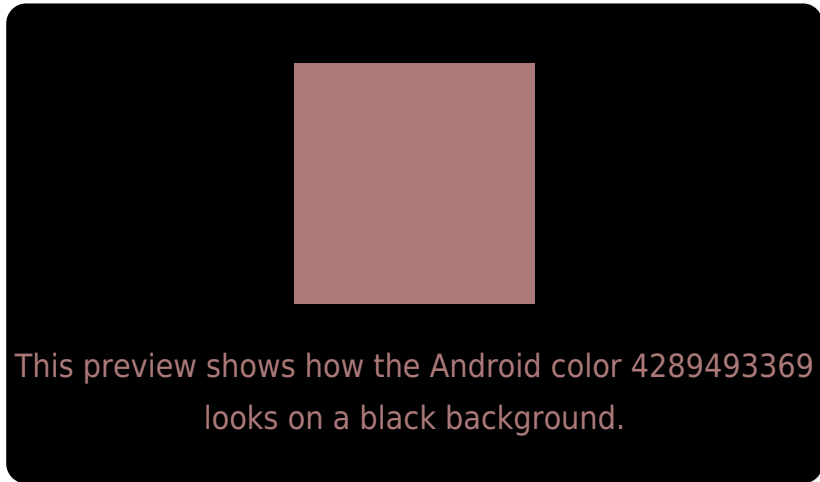
Large Text (above 18pt) WCAG AA ✓ Pass

Any Text WCAG AA ✗ Fail

Large Text (above 18pt) WCAG AAA ✗ Fail

Any Text WCAG AAA ✗ Fail

Black Background



Color Contrast Check

Large Text (above 18pt) WCAG AA ✓ Pass

Any Text WCAG AA ✓ Pass

Large Text (above 18pt) WCAG AAA ✓ Pass

Any Text WCAG AAA × Fail

If you want to check with other color combinations, try the [Color Contrast Checker](#).

Android 4289493369 Background



This preview shows how black text looks on a background with the Android color 4289493369.



This preview shows how white text looks on a background with the Android color 4289493369.

Color Blindness Simulation

Color vision deficiency is a very complex topic, and I could not describe the different causes any better than Wikipedia does, so if you want to learn more, you should check out their [article about color blindness](#).

Dichromacy



Original Color
4289493369

Protanopia
4287268480

Deuteranopia
4288250231

Trichromacy



Original Color
4289493369

Protanomaly
4288053629

Deuteranomaly
4288708216

Tritanomaly
4289558654

Monochromacy



Original Color
4289493369

Achromatopsia
4287137928

Achromatomaly
4287988611

CSS Examples

Text

The CSS property to change the color of the text to Android 4289493369 is called "color". The color property can be set on classes, ids or directly on the HTML element.

This example shows how text in the color `rgb(172, 121, 121)` looks like.

```
.text, #text, p{  
    color:rgb(172, 121, 121)  
}
```

If you want to add a text shadow in that color use the text-shadow property, you can generate a text shadow directly with our [CSS Text Shadow Generator](#).

Here you see how black text with a 4 pixel rgb(172, 121, 121) colored shadow looks like.

```
.shadow{ text-shadow: 4px 4px 2px rgb(172, 121, 121) }
```

Border

The CSS property to change the border of an element to Android 4289493369 is called "border". The border property can be set on classes, ids or directly on the HTML element.

This example shows the color as border, it can be applied via the CSS property "border" or "border-color".

```
.border, #border, table{ border:4px solid rgb(172, 121, 121) }
```

If only the border color should be changed use the property `border-color`.

```
.border{ border-color:rgb(172, 121, 121) }
```

If you want to add a box shadow in that color use:

Here you see how a box with a 4 pixel `rgb(172, 121, 121)` colored shadow looks like.

```
.boxshadow{ -moz-box-shadow:4px 4px 4px  
4px rgb(172, 121, 121); -webkit-box-  
shadow:4px 4px 4px 4px rgb(172, 121, 121);  
box-shadow:4px 4px 4px 4px rgb(172, 121,  
121) }
```

Background

The CSS property to change the background color of an element to Android 4289493369 is called "background". The background property can be set on classes, ids or directly on the HTML element.

```
.background, #background, body{  
background: rgb(172, 121, 121) }
```

If only the background color should be changed can be used:

```
.background{ background-color: rgb(172,  
121, 121) }
```

This example shows the color as background, it is applied via the CSS property "background".

To optimize and compress your CSS code, you can use our [online CSS compressor and optimizer](#) based on csstidy. If you want to create a linear or radial gradient as background or border, check our [CSS Gradient Generator](#).

Hey! You found this booklet interesting? Support Converting Colors with the new Membership Option!

The pro membership hides all ads, plus gives you double the colors in the color bucket, and more awesome pro features!

[Learn more, Memberships starting at \\$2.50/m!](#)

**Follow me
on Twitter!**

@ConvertingColor