

Converting Colors

Android(4289494112)

Have a look what the booklet for
Android(4289494112) contains.

Android(4289494112)	3
<i>Conversions</i>	4
<i>Details</i>	6
<i>Harmonies</i>	11
<i>Previews</i>	23
<i>Color Blindness Simulation</i>	26
<i>CSS Examples</i>	29

Color

Android(4289494112)

Conversions

Conversions Part 1

Format	Color
Hex	AC7C60
RGB	172, 124, 96
RGB Percent	67%, 49%, 38%
CMY	0.3255, 0.5137, 0.6235
CMYK	0.00, 0.28, 0.44, 0.33
HSL	22°, 31%, 53%
HSV	22°, 44%, 67%
XYZ	26.3322, 24.0305, 14.3168
YIQ	135.1600, 37.5960, 1.4680

Conversions

Conversions Part 2

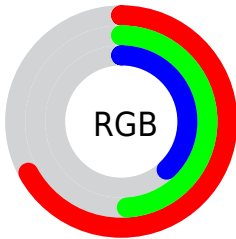
Format	Color
R_YB	172, 140, 96
Decimal	11304032
CIE Lab	56.12, 15.10, 22.64
CIE LCh	56, 27.213, 56.305
Yxy	24.0305, 0.4071, 0.3715
Android (android.graphics.Color)	4289494112 (0xFFAC7C60)
YUV	135.1600, -19.3059, 32.3087
Hunter-Lab	49.0209, 10.0971, 16.9987

Details

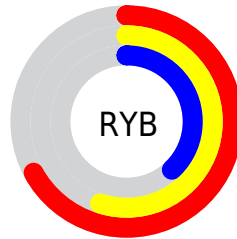
The Android color `4289494112` is a dark color, and the websafe version is hex `CC9966`. A complement of this color would be `4284518572`, and the grayscale version is `4287072135`.

A 20% lighter version of the original color is `4293243283`, and `4285877041` is the 20% darker color. If you saturate the color by 10%, you get `4289491279`, and if you desaturate by 10%, it is `4289496945`.

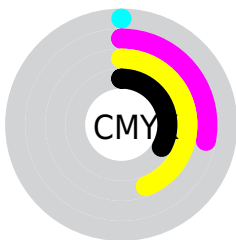
Distribution



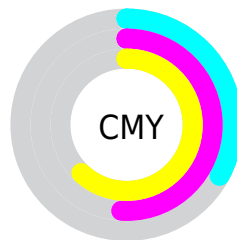
- Red (67%)
- Green (49%)
- Blue (38%)



- Red (67%)
- Yellow (55%)
- Blue (38%)



- Cyan (0%)
- Magenta (28%)
- Yellow (44%)
- Black (33%)



- Cyan (33%)
- Magenta (51%)
- Yellow (62%)

Brightness & Saturation Gradients

These gradients show how the Android color 4289494112 changes by changing the brightness by 10 percent. The first figure shows a shift by +10% for each color and the second figure -10%.

Similar to the brightness gradients but the following saturation gradients show a change of the Android color 4289494112 by changing the saturation by 10% instead.



4289494112



4289494112

4294967295



4287652680



4293243283



4285877041



4294954157



4284167196



4294961353



4282523139



4294967269



4280944896



4278190080



4289494112



4289494112



4289491279



4289496945



4289488446



4289499778

 4289485612

 4289502612

 4289483035

 4289505189

 4289480202

 4289508022

 4289478400

 4289510855

 4289513688

 4289516522

 4289519355

Harmonies

Analogous

The Analogous color harmony consists of three colors that are next to each other on the color wheel.



4290082419



4289494112



4288316503

Triad

The Triadic color harmony groups three colors that are evenly spaced from another and form a triangle on the color wheel.



4289494112



4283077507



4287005105

Complementary

The Complementary color scheme is a pair of colors which are on the opposite of each other on the color wheel.



4289494112



4284518572

Split Complementary

Split-complementary colors differ from the complementary color scheme. The scheme consists of three colors, the original color and two neighbors of the complement color.



4284648117



4289494112



4281832347

Square

The Square scheme is like the rectangle color scheme, but the four colors are evenly spaced on the color wheel.



4289494112



4284911980



4282486957



4288838049

Rectangle

The Rectangle color scheme consists of four colors that form a rectangle on the color wheel.



4289494112



4287269209



4282486957



4286219444

Sweetspot

The Sweet Spot groups the original color and five complimentary colors.



4289494112



4292923075



4289486992



4285556062



4293980400



4285558896

Same Dimension

The Same Dimension uses a secret algorithm to generate beautiful new colors.



4289494112



4292908393



4289503840



4283912526



4288034560



4279699456

Inverse Universe

The Inverse Universe completely reimagines the original color for something new.



4284518572



4285117920



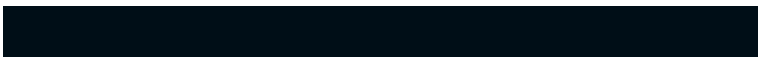
4284508844



4283323479



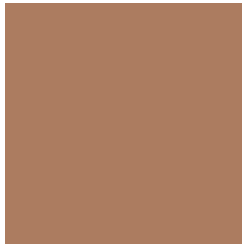
4278214550



4278193687

Previews

White Background



This preview shows how the Android color 4289494112 looks on a white background.

Color Contrast Check

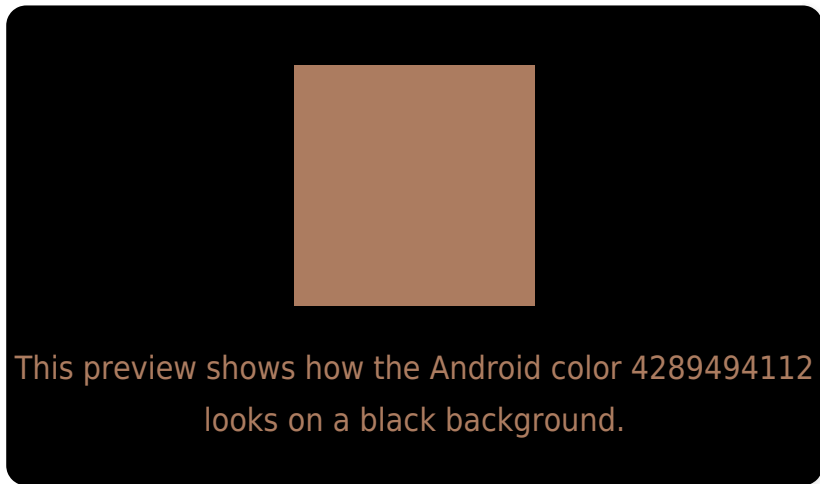
Large Text (above 18pt) WCAG AA ✓ Pass

Any Text WCAG AA ✗ Fail

Large Text (above 18pt) WCAG AAA ✗ Fail

Any Text WCAG AAA ✗ Fail

Black Background



Color Contrast Check

Large Text (above 18pt) WCAG AA ✓ Pass

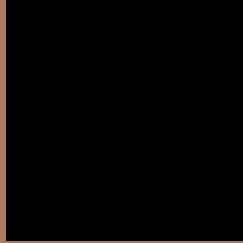
Any Text WCAG AA ✓ Pass

Large Text (above 18pt) WCAG AAA ✓ Pass

Any Text WCAG AAA × Fail

If you want to check with other color combinations, try the [Color Contrast Checker](#).

Android 4289494112 Background



This preview shows how black text looks on a background with the Android color 4289494112.



This preview shows how white text looks on a background with the Android color 4289494112.

Color Blindness Simulation

Color vision deficiency is a very complex topic, and I could not describe the different causes any better than Wikipedia does, so if you want to learn more, you should check out their [article about color blindness](#).


Dichromacy



Original Color
4289494112

Protanopia
4287727461

Deuteranopia
4288708959



Tritanopia
4289689729

Trichromacy



Original Color
4289494112

Protanomaly
4288381795

Deuteranomaly
4288970591

Tritanomaly
4289624437

Monochromacy



Original Color
4289494112

Achromatopsia
4287072135

Achromatomaly
4287923065

CSS Examples

Text

The CSS property to change the color of the text to Android 4289494112 is called "color". The color property can be set on classes, ids or directly on the HTML element.

This example shows how text in the color `rgb(172, 124, 96)` looks like.

```
.text, #text, p{  
    color:rgb(172, 124, 96)  
}
```

If you want to add a text shadow in that color use the text-shadow property, you can generate a text shadow directly with our [CSS Text Shadow Generator](#).

Here you see how black text with a 4 pixel rgb(172, 124, 96) colored shadow looks like.

```
.shadow{ text-shadow: 4px 4px 2px rgb(172, 124, 96) }
```

Border

The CSS property to change the border of an element to Android 4289494112 is called "border". The border property can be set on classes, ids or directly on the HTML element.

This example shows the color as border, it can be applied via the CSS property "border" or "border-color".

```
.border, #border, table{ border:4px solid rgb(172, 124, 96) }
```

If only the border color should be changed use the property `border-color`.

```
.border{ border-color:rgb(172, 124, 96) }
```

If you want to add a box shadow in that color use:

Here you see how a box with a 4 pixel `rgb(172, 124, 96)` colored shadow looks like.

```
.boxshadow{ -moz-box-shadow:4px 4px 4px  
4px rgb(172, 124, 96); -webkit-box-  
shadow:4px 4px 4px 4px rgb(172, 124, 96);  
box-shadow:4px 4px 4px 4px rgb(172, 124,  
96) }
```

Background

The CSS property to change the background color of an element to Android 4289494112 is called "background". The background property can be set on classes, ids or directly on the HTML element.

```
.background, #background, body{  
background: rgb(172, 124, 96) }
```

If only the background color should be changed can be used:

```
.background{ background-color: rgb(172,  
124, 96) }
```

This example shows the color as background, it is applied via the CSS property "background".

To optimize and compress your CSS code, you can use our [online CSS compressor and optimizer](#) based on csstidy. If you want to create a linear or radial gradient as background or border, check our [CSS Gradient Generator](#).

Hey! You found this booklet interesting? Support Converting Colors with the new Membership Option!

The pro membership hides all ads, plus gives you double the colors in the color bucket, and more awesome pro features!

[Learn more, Memberships starting at \\$2.50/m!](#)

**Follow me
on Twitter!**

@ConvertingColor