

Converting Colors

Android(4289499001)

Have a look what the booklet for
Android(4289499001) contains.

Android(4289499001)	3
<i>Conversions</i>	4
<i>Details</i>	6
<i>Harmonies</i>	11
<i>Previews</i>	23
<i>Color Blindness Simulation</i>	26
<i>CSS Examples</i>	29

Color

Android(4289499001)

Conversions

Conversions Part 1

Format	Color
Hex	AC8F79
RGB	172, 143, 121
RGB Percent	67%, 56%, 47%
CMY	0.3255, 0.4392, 0.5255
CMYK	0.00, 0.17, 0.30, 0.33
HSL	26°, 24%, 57%
HSV	26°, 30%, 67%
XYZ	30.2869, 29.7961, 22.2441
YIQ	149.1630, 24.3460, -0.6940

Conversions

Conversions Part 2

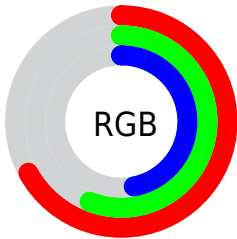
Format	Color
RYB	172, 160, 121
Decimal	11308921
CIELab	61.48, 7.56, 15.79
CIElCh	61, 17.506, 64.423
Yxy	29.7961, 0.3679, 0.3619
Android (android.graphics.Color)	4289499001 (0xFFAC8F79)
YUV	149.1630, -13.8844, 20.0280
Hunter-Lab	54.5858, 3.5156, 14.0489

Details

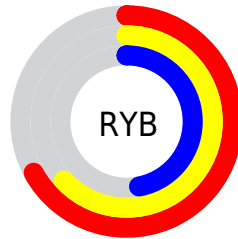
The Android color `4289499001` is a dark color, and the websafe version is hex `CC9999`. A complement of this color would be `4286158508`, and the grayscale version is `4287993237`.

A 20% lighter version of the original color is `4293182893`, and `4286012744` is the 20% darker color. If you saturate the color by 10%, you get `4289496424`, and if you desaturate by 10%, it is `4289501578`.

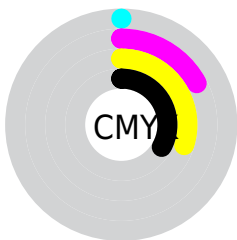
Distribution



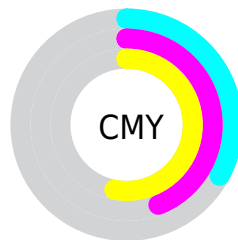
- Red (67%)
- Green (56%)
- Blue (47%)



- Red (67%)
- Yellow (63%)
- Blue (47%)



- Cyan (0%)
- Magenta (17%)
- Yellow (30%)
- Black (33%)



- Cyan (33%)
- Magenta (44%)
- Yellow (53%)

Brightness & Saturation Gradients

These gradients show how the Android color 4289499001 changes by changing the brightness by 10 percent. The first figure shows a shift by +10% for each color and the second figure -10%.

Similar to the brightness gradients but the following saturation gradients show a change of the Android color 4289499001 by changing the saturation by 10% instead.



4289499001



4289499001

4294967295



4287722848



4293182893



4286012744



4294959561



4284302642



4294966757



4282724124



4281211396



4279697408



4278190080



4289499001



4289499001



4289496424



4289501578

 4289493847

 4289504155

 4289491525

 4289506477

 4289488948

 4289509054

 4289486371

 4289511631

 4289483794

 4289514208

 4289481473

 4289516529

 4289481216

 4289519103

 4289521663

Harmonies

Analogous

The Analogous color harmony consists of three colors that are next to each other on the color wheel.



4290022276



4289499001



4288582774

Triad

The Triadic color harmony groups three colors that are evenly spaced from another and form a triangle on the color wheel.



4289499001



4285439382



4288319662

Complementary

The Complementary color scheme is a pair of colors which are on the opposite of each other on the color wheel.



4289499001



4286158508

Split Complementary

Split-complementary colors differ from the complementary color scheme. The scheme consists of three colors, the original color and two neighbors of the complement color.



4287010227



4289499001



4285177253

Square

The Square scheme is like the rectangle color scheme, but the four colors are evenly spaced on the color wheel.



4289499001



4286291079



4285766320



4289432482

Rectangle

The Rectangle color scheme consists of four colors that form a rectangle on the color wheel.



4289499001



4287862648



4285766320



4287861169

Sweetspot

The Sweet Spot groups the original color and five complimentary colors.



4289499001



4292924876



4289493399



4285557092



4293980400



4285558896

Same Dimension

The Same Dimension uses a secret algorithm to generate beautiful new colors.



4289499001



4292915856



4289505401



4283912782



4288037120



4279699968

Inverse Universe

The Inverse Universe completely reimagines the original color for something new.



4286158508



4287676128



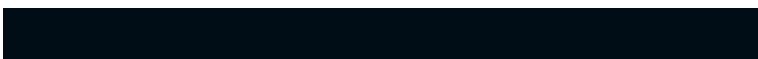
4286152108



4283323223



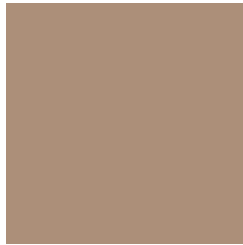
4278212246



4278193431

Previews

White Background



This preview shows how the Android color 4289499001 looks on a white background.

Color Contrast Check

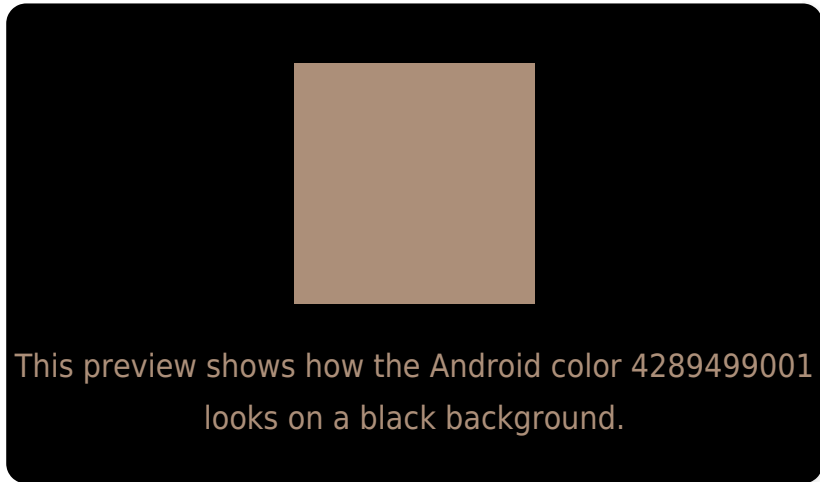
Large Text (above 18pt) WCAG AA ✓ Pass

Any Text WCAG AA ✗ Fail

Large Text (above 18pt) WCAG AAA ✗ Fail

Any Text WCAG AAA ✗ Fail

Black Background



Color Contrast Check

Large Text (above 18pt) WCAG AA ✓ Pass

Any Text WCAG AA ✓ Pass

Large Text (above 18pt) WCAG AAA ✓ Pass

Any Text WCAG AAA × Fail

If you want to check with other color combinations, try the [Color Contrast Checker](#).

Android 4289499001 Background



This preview shows how black text looks on a background with the Android color 4289499001.



This preview shows how white text looks on a background with the Android color 4289499001.

Color Blindness Simulation

Color vision deficiency is a very complex topic, and I could not describe the different causes any better than Wikipedia does, so if you want to learn more, you should check out their [article about color blindness](#).


Dichromacy



Original Color
4289499001

Protanopia
4288517244

Deuteranopia
4289499001



Tritanopia
4289694614

Trichromacy



Original Color
4289499001

Protanomaly
4288844411

Deuteranomaly
4289499001

Tritanomaly
4289629323

Monochromacy



Original Color
4289499001

Achromatopsia
4287993237

Achromatomaly
4288517003

CSS Examples

Text

The CSS property to change the color of the text to Android 4289499001 is called "color". The color property can be set on classes, ids or directly on the HTML element.

This example shows how text in the color `rgb(172, 143, 121)` looks like.

```
.text, #text, p{  
    color:rgb(172, 143, 121)  
}
```

If you want to add a text shadow in that color use the text-shadow property, you can generate a text shadow directly with our [CSS Text Shadow Generator](#).

Here you see how black text with a 4 pixel rgb(172, 143, 121) colored shadow looks like.

```
.shadow{ text-shadow: 4px 4px 2px rgb(172, 143, 121) }
```

Border

The CSS property to change the border of an element to Android 4289499001 is called "border". The border property can be set on classes, ids or directly on the HTML element.

This example shows the color as border, it can be applied via the CSS property "border" or "border-color".

```
.border, #border, table{ border:4px solid rgb(172, 143, 121) }
```

If only the border color should be changed use the property `border-color`.

```
.border{ border-color:rgb(172, 143, 121) }
```

If you want to add a box shadow in that color use:

Here you see how a box with a 4 pixel `rgb(172, 143, 121)` colored shadow looks like.

```
.boxshadow{ -moz-box-shadow:4px 4px 4px  
4px rgb(172, 143, 121); -webkit-box-  
shadow:4px 4px 4px 4px rgb(172, 143, 121);  
box-shadow:4px 4px 4px 4px rgb(172, 143,  
121) }
```

Background

The CSS property to change the background color of an element to Android 4289499001 is called "background". The background property can be set on classes, ids or directly on the HTML element.

```
.background, #background, body{  
background: rgb(172, 143, 121) }
```

If only the background color should be changed can be used:

```
.background{ background-color: rgb(172,  
143, 121) }
```

This example shows the color as background, it is applied via the CSS property "background".

To optimize and compress your CSS code, you can use our [online CSS compressor and optimizer](#) based on csstidy. If you want to create a linear or radial gradient as background or border, check our [CSS Gradient Generator](#).

Hey! You found this booklet interesting? Support Converting Colors with the new Membership Option!

The pro membership hides all ads, plus gives you double the colors in the color bucket, and more awesome pro features!

[Learn more, Memberships starting at \\$2.50/m!](#)

**Follow me
on Twitter!**

@ConvertingColor