

Converting Colors

Android(4289500284)

Have a look what the booklet for
Android(4289500284) contains.

Android(4289500284)	3
<i>Conversions</i>	4
<i>Details</i>	6
<i>Harmonies</i>	11
<i>Previews</i>	23
<i>Color Blindness Simulation</i>	26
<i>CSS Examples</i>	29

Color

Android(4289500284)

Conversions

Conversions Part 1

Format	Color
Hex	AC947C
RGB	172, 148, 124
RGB Percent	67%, 58%, 49%
CMY	0.3255, 0.4196, 0.5137
CMYK	0.00, 0.14, 0.28, 0.33
HSL	30°, 22%, 58%
HSV	30°, 28%, 67%
XYZ	31.2413, 31.4057, 23.4841
YIQ	152.4400, 22.0080, -2.3760

Conversions

Conversions Part 2

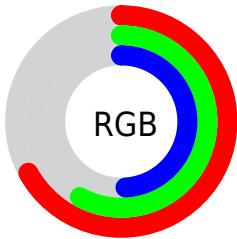
Format	Color
RYB	172, 172, 124
Decimal	11310204
CIELab	62.85, 5.20, 16.00
CIElCh	63, 16.828, 72.003
Yxy	31.4057, 0.3627, 0.3646
Android (android.graphics.Color)	4289500284 (0xFFAC947C)
YUV	152.4400, -14.0209, 17.1541
Hunter-Lab	56.0408, 1.4376, 14.3829

Details

The Android color `4289500284` is a dark color, and the websafe version is hex `999999`. A complement of this color would be `4286354604`, and the grayscale version is `4288256409`.

A 20% lighter version of the original color is `4293184177`, and `4286013771` is the 20% darker color. If you saturate the color by 10%, you get `4289497963`, and if you desaturate by 10%, it is `4289502605`.

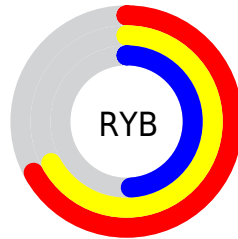
Distribution



Red (67%)

Green (58%)

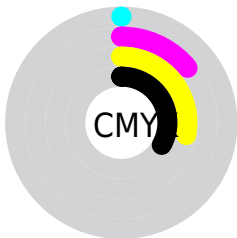
Blue (49%)



Red (67%)

Yellow (67%)

Blue (49%)

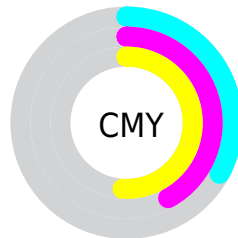


Cyan (0%)

Magenta (14%)

Yellow (28%)

Black (33%)



Cyan (33%)

Magenta (42%)

Yellow (51%)

Brightness & Saturation Gradients

These gradients show how the Android color 4289500284 changes by changing the brightness by 10 percent. The first figure shows a shift by +10% for each color and the second figure -10%.

Similar to the brightness gradients but the following saturation gradients show a change of the Android color 4289500284 by changing the saturation by 10% instead.



4289500284



4289500284

4294967295



4287724131



4293184177



4286013771



4294960844



4284369460



4294967272



4282725151



4281212424



4279764480



4278190080



4289500284



4289500284



4289497963



4289502605

 4289495898

 4289504670

 4289493576

 4289506992

 4289491511

 4289509057

 4289489190

 4289511378

 4289486869

 4289513699

 4289484804

 4289515764

 4289484288

 4289518079

 4289520127

Harmonies

Analogous

The Analogous color harmony consists of three colors that are next to each other on the color wheel.



4290089093



4289500284



4288518523

Triad

The Triadic color harmony groups three colors that are evenly spaced from another and form a triangle on the color wheel.



4289500284



4285702558



4288844462

Complementary

The Complementary color scheme is a pair of colors which are on the opposite of each other on the color wheel.



4289500284



4286354604

Split Complementary

Split-complementary colors differ from the complementary color scheme. The scheme consists of three colors, the original color and two neighbors of the complement color.



4287600565



4289500284



4285636523

Square

The Square scheme is like the rectangle color scheme, but the four colors are evenly spaced on the color wheel.



4289500284



4286357646



4286356660



4289826722

Rectangle

The Rectangle color scheme consists of four colors that form a rectangle on the color wheel.



4289500284



4287798399



4286356660



4288451761

Sweetspot

The Sweet Spot groups the original color and five complimentary colors.



4289500284



4292925390



4289494164



4285557605



4293980400



4285558896

Same Dimension

The Same Dimension uses a secret algorithm to generate beautiful new colors.



4289500284



4292918166



4289506428



4283912782



4288039680



4279700224

Inverse Universe

The Inverse Universe completely reimagines the original color for something new.



4286354604



4288068576



4286348460



4283322967



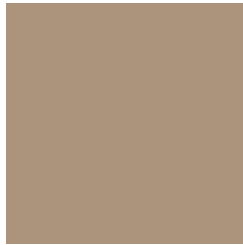
4278209430



4278192919

Previews

White Background



This preview shows how the Android color 4289500284 looks on a white background.

Color Contrast Check

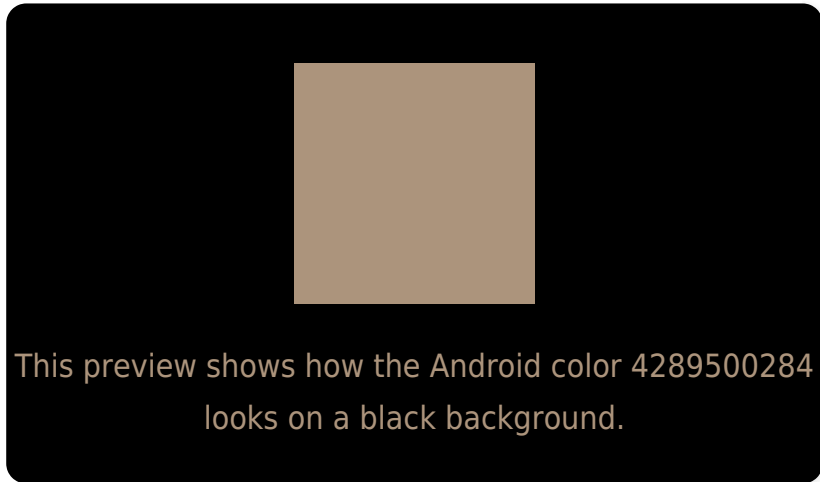
Large Text (above 18pt) WCAG AA × Fail

Any Text WCAG AA × Fail

Large Text (above 18pt) WCAG AAA × Fail

Any Text WCAG AAA × Fail

Black Background



Color Contrast Check

Large Text (above 18pt) WCAG AA ✓ Pass

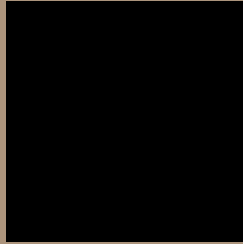
Any Text WCAG AA ✓ Pass

Large Text (above 18pt) WCAG AAA ✓ Pass

Any Text WCAG AAA ✓ Pass

If you want to check with other color combinations, try the [Color Contrast Checker](#).

Android 4289500284 Background



This preview shows how black text looks on a background with the Android color 4289500284.



This preview shows how white text looks on a background with the Android color 4289500284.

Color Blindness Simulation

Color vision deficiency is a very complex topic, and I could not describe the different causes any better than Wikipedia does, so if you want to learn more, you should check out their [article about color blindness](#).

Dichromacy



Original Color

4289500284

Protanopia

4288780414

Deuteranopia

4289761916



Tritanopia
4289761435

Trichromacy



Original Color
4289500284

Protanomaly
4289042301

Deuteranomaly
4289696636

Tritanomaly
4289696144

Monochromacy



Original Color
4289500284

Achromatopsia
4288190616

Achromatomaly
4288649102

CSS Examples

Text

The CSS property to change the color of the text to Android 4289500284 is called "color". The color property can be set on classes, ids or directly on the HTML element.

This example shows how text in the color `rgb(172, 148, 124)` looks like.

```
.text, #text, p{  
    color:rgb(172, 148, 124)  
}
```

If you want to add a text shadow in that color use the text-shadow property, you can generate a text shadow directly with our [CSS Text Shadow Generator](#).

Here you see how black text with a 4 pixel rgb(172, 148, 124) colored shadow looks like.

```
.shadow{ text-shadow: 4px 4px 2px rgb(172, 148, 124) }
```

Border

The CSS property to change the border of an element to Android 4289500284 is called "border". The border property can be set on classes, ids or directly on the HTML element.

This example shows the color as border, it can be applied via the CSS property "border" or "border-color".

```
.border, #border, table{ border:4px solid rgb(172, 148, 124) }
```

If only the border color should be changed use the property `border-color`.

```
.border{ border-color:rgb(172, 148, 124) }
```

If you want to add a box shadow in that color use:

Here you see how a box with a 4 pixel `rgb(172, 148, 124)` colored shadow looks like.

```
.boxshadow{ -moz-box-shadow:4px 4px 4px 4px rgb(172, 148, 124); -webkit-box-shadow:4px 4px 4px 4px rgb(172, 148, 124); box-shadow:4px 4px 4px 4px rgb(172, 148, 124) }
```

Background

The CSS property to change the background color of an element to Android 4289500284 is called "background". The background property can be set on classes, ids or directly on the HTML element.

```
.background, #background, body{  
background: rgb(172, 148, 124) }
```

If only the background color should be changed can be used:

```
.background{ background-color: rgb(172,  
148, 124) }
```

This example shows the color as background, it is applied via the CSS property "background".

To optimize and compress your CSS code, you can use our [online CSS compressor and optimizer](#) based on csstidy. If you want to create a linear or radial gradient as background or border, check our [CSS Gradient Generator](#).

Hey! You found this booklet interesting? Support Converting Colors with the new Membership Option!

The pro membership hides all ads, plus gives you double the colors in the color bucket, and more awesome pro features!

[Learn more, Memberships starting at \\$2.50/m!](#)

**Follow me
on Twitter!**

@ConvertingColor