

Converting Colors

Android(4289557887)

Have a look what the booklet for
Android(4289557887) contains.

Android(4289557887)	3
<i>Conversions</i>	4
<i>Details</i>	6
<i>Harmonies</i>	11
<i>Previews</i>	23
<i>Color Blindness Simulation</i>	26
<i>CSS Examples</i>	29

Color

Android(4289557887)

Conversions

Conversions Part 1

Format	Color
Hex	AD757F
RGB	173, 117, 127
RGB Percent	68%, 46%, 50%
CMY	0.3216, 0.5412, 0.5020
CMYK	0.00, 0.32, 0.27, 0.32
HSL	349°, 25%, 57%
HSV	349°, 32%, 68%
XYZ	27.4256, 23.1391, 23.0995
YIQ	134.8840, 30.1660, 14.9820

Conversions

Conversions Part 2

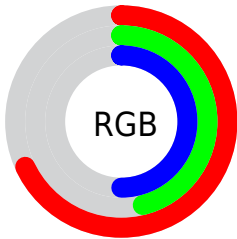
Format	Color
R_{YB}	173, 117, 127
Decimal	11367807
CIE _{Lab}	55.22, 23.44, 3.50
CIE _{LCh}	55, 23.700, 8.499
Yxy	23.1391, 0.3723, 0.3141
Android (android.graphics.Color)	4289557887 (0xFFAD757F)
YUV	134.8840, -3.8868, 33.4277
Hunter-Lab	48.1031, 17.5899, 5.2007

Details

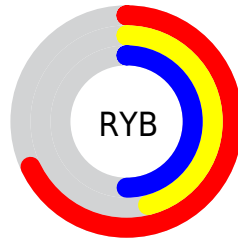
The Android color `4289557887` is a dark color, and the websafe version is hex `996666`. A complement of this color would be `4285902243`, and the grayscale version is `4287072135`.

A 20% lighter version of the original color is `4293307060`, and `4286006350` is the 20% darker color. If you saturate the color by 10%, you get `4289553521`, and if you desaturate by 10%, it is `4289562253`.

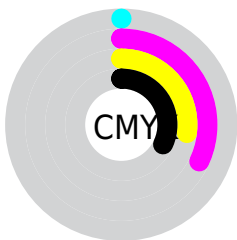
Distribution



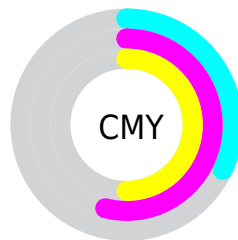
- Red (68%)
- Green (46%)
- Blue (50%)



- Red (68%)
- Yellow (46%)
- Blue (50%)



- Cyan (0%)
- Magenta (32%)
- Yellow (27%)
- Black (32%)



- Cyan (32%)
- Magenta (54%)
- Yellow (50%)

Brightness & Saturation Gradients

These gradients show how the Android color 4289557887 changes by changing the brightness by 10 percent. The first figure shows a shift by +10% for each color and the second figure -10%.

Similar to the brightness gradients but the following saturation gradients show a change of the Android color 4289557887 by changing the saturation by 10% instead.

 4289557887

 4289557887

4294967295

 4287781990

 4293307060

 4286006350

 4294952399

 4284296503

 4294959595

 4282652194

4294967039

 4281139212

 4278648832

 4278190080

 4289557887

 4289557887

 4289553521

 4289562253

 4289548899

 4289566875

 4289544532

 4289571242

 4289540166

 4289575608

 4289535544

 4289580230

 4289531178

 4289584596

 4289527839

 4289588962

 4289593329

 4289593343

Harmonies

Analogous

The Analogous color harmony consists of three colors that are next to each other on the color wheel.



4288903060



4289557887



4289427564

Triad

The Triadic color harmony groups three colors that are evenly spaced from another and form a triangle on the color wheel.



4289557887



4285959012



4283861674

Complementary

The Complementary color scheme is a pair of colors which are on the opposite of each other on the color wheel.



4289557887



4285902243

Split Complementary

Split-complementary colors differ from the complementary color scheme. The scheme consists of three colors, the original color and two neighbors of the complement color.



4282748573



4289557887



4284452469

Square

The Square scheme is like the rectangle color scheme, but the four colors are evenly spaced on the color wheel.



4289557887



4287464795



4283076746



4285695149

Rectangle

The Rectangle color scheme consists of four colors that form a rectangle on the color wheel.



4289557887



4288969826



4283076746



4283337895

Sweetspot

The Sweet Spot groups the original color and five complimentary colors.



4289557887



4292922062



4288902573



4285555557



4293980400



4285558896

Same Dimension

The Same Dimension uses a secret algorithm to generate beautiful new colors.



4289557887



4292905369



4289562485



4283911760



4288020507



4279697412

Inverse Universe

The Inverse Universe completely reimagines the original color for something new.



4289557887



4292905369



4285897645



4283911760



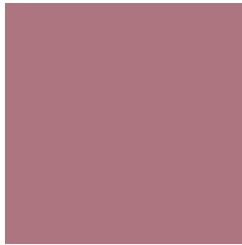
4288020507



4279697412

Previews

White Background



This preview shows how the Android color 4289557887 looks on a white background.

Color Contrast Check

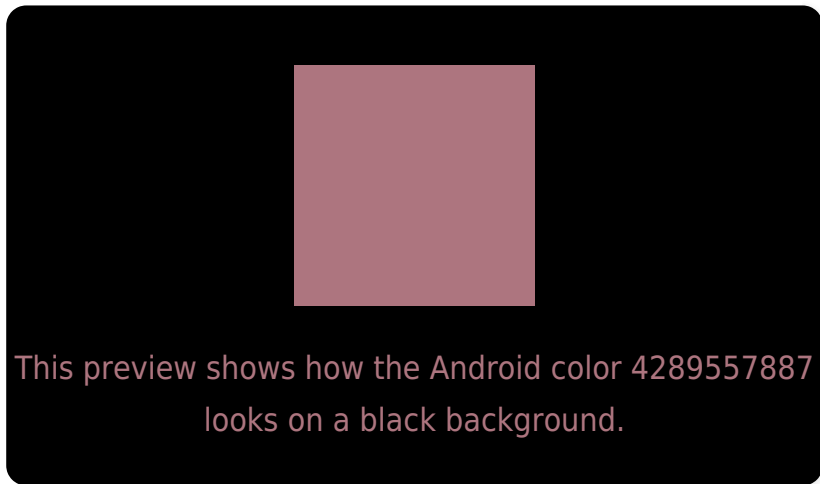
Large Text (above 18pt) WCAG AA ✓ Pass

Any Text WCAG AA ✗ Fail

Large Text (above 18pt) WCAG AAA ✗ Fail

Any Text WCAG AAA ✗ Fail

Black Background



Color Contrast Check

Large Text (above 18pt) WCAG AA ✓ Pass

Any Text WCAG AA ✓ Pass

Large Text (above 18pt) WCAG AAA ✓ Pass

Any Text WCAG AAA × Fail

If you want to check with other color combinations, try the [Color Contrast Checker](#).

Android 4289557887 Background



This preview shows how black text looks on a background with the Android color 4289557887.



This preview shows how white text looks on a background with the Android color 4289557887.

Color Blindness Simulation

Color vision deficiency is a very complex topic, and I could not describe the different causes any better than Wikipedia does, so if you want to learn more, you should check out their [article about color blindness](#).

Dichromacy



Trichromacy



Original Color
4289557887

Protanomaly
4287922052

Deuteranomaly
4288511102

Tritanomaly
4289557886

Monochromacy



Original Color
4289557887

Achromatopsia
4287072135

Achromatomaly
4287987844

CSS Examples

Text

The CSS property to change the color of the text to Android 4289557887 is called "color". The color property can be set on classes, ids or directly on the HTML element.

This example shows how text in the color `rgb(173, 117, 127)` looks like.

```
.text, #text, p{  
    color:rgb(173, 117, 127)  
}
```

If you want to add a text shadow in that color use the text-shadow property, you can generate a text shadow directly with our [CSS Text Shadow Generator](#).

Here you see how black text with a 4 pixel rgb(173, 117, 127) colored shadow looks like.

```
.shadow{ text-shadow: 4px 4px 2px rgb(173, 117, 127) }
```

Border

The CSS property to change the border of an element to Android 4289557887 is called "border". The border property can be set on classes, ids or directly on the HTML element.

This example shows the color as border, it can be applied via the CSS property "border" or "border-color".

```
.border, #border, table{ border:4px solid rgb(173, 117, 127) }
```

If only the border color should be changed use the property `border-color`.

```
.border{ border-color:rgb(173, 117, 127) }
```

If you want to add a box shadow in that color use:

Here you see how a box with a 4 pixel `rgb(173, 117, 127)` colored shadow looks like.

```
.boxshadow{ -moz-box-shadow:4px 4px 4px  
4px rgb(173, 117, 127); -webkit-box-  
shadow:4px 4px 4px 4px rgb(173, 117, 127);  
box-shadow:4px 4px 4px 4px rgb(173, 117,  
127) }
```

Background

The CSS property to change the background color of an element to Android 4289557887 is called "background". The background property can be set on classes, ids or directly on the HTML element.

```
.background, #background, body{  
background: rgb(173, 117, 127) }
```

If only the background color should be changed can be used:

```
.background{ background-color: rgb(173,  
117, 127) }
```

This example shows the color as background, it is applied via the CSS property "background".

To optimize and compress your CSS code, you can use our [online CSS compressor and optimizer](#) based on csstidy. If you want to create a linear or radial gradient as background or border, check our [CSS Gradient Generator](#).

Hey! You found this booklet interesting? Support Converting Colors with the new Membership Option!

The pro membership hides all ads, plus gives you double the colors in the color bucket, and more awesome pro features!

[Learn more, Memberships starting at \\$2.50/m!](#)

**Follow me
on Twitter!**

@ConvertingColor