

Converting Colors

Android(4289559379)

Have a look what the booklet for
Android(4289559379) contains.

Android(4289559379)	3
<i>Conversions</i>	4
<i>Details</i>	6
<i>Harmonies</i>	11
<i>Previews</i>	23
<i>Color Blindness Simulation</i>	26
<i>CSS Examples</i>	29

Color

Android(4289559379)

Conversions

Conversions Part 1

Format	Color
Hex	AD7B53
RGB	173, 123, 83
RGB Percent	68%, 48%, 33%
CMY	0.3216, 0.5176, 0.6745
CMYK	0.00, 0.29, 0.52, 0.32
HSL	27°, 35%, 50%
HSV	27°, 52%, 68%
XYZ	25.8779, 23.6747, 11.3894
YIQ	133.3900, 42.6400, -1.8400

Conversions

Conversions Part 2

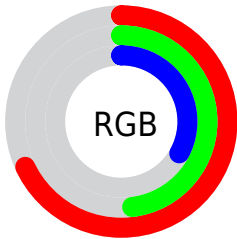
Format	Color
R_{YB}	173, 155, 83
Decimal	11369299
CIE _{Lab}	55.76, 14.75, 29.49
CIE _{LCh}	56, 32.975, 63.423
Yxy	23.6747, 0.4246, 0.3885
Android (android.graphics.Color)	4289559379 (0xFFAD7B53)
YUV	133.3900, -24.8423, 34.7380
Hunter-Lab	48.6566, 9.7855, 20.1813

Details

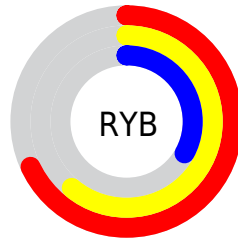
The Android color `4289559379` is a dark color, and the websafe version is hex `996633`. A complement of this color would be `4283663789`, and the grayscale version is `4287006342`.

A 20% lighter version of the original color is `4293374085`, and `4285942309` is the 20% darker color. If you saturate the color by 10%, you get `4289556802`, and if you desaturate by 10%, it is `4289561956`.

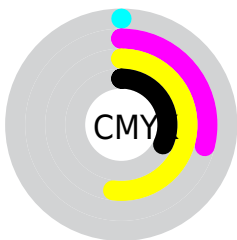
Distribution



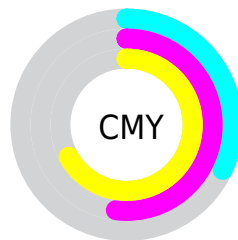
- Red (68%)
- Green (48%)
- Blue (33%)



- Red (68%)
- Yellow (61%)
- Blue (33%)



- Cyan (0%)
- Magenta (29%)
- Yellow (52%)
- Black (32%)



- Cyan (32%)
- Magenta (52%)
- Yellow (67%)

Brightness & Saturation Gradients

These gradients show how the Android color 4289559379 changes by changing the brightness by 10 percent. The first figure shows a shift by +10% for each color and the second figure -10%.

Similar to the brightness gradients but the following saturation gradients show a change of the Android color 4289559379 by changing the saturation by 10% instead.



4289559379



4289559379

4294967295



4287717947



4293374085



4285942309



4294953887



4284166927



4294961083



4282523136



4294967254



4280879104



4294967283



4278190080



4289559379



4289559379



4289556802



4289561956



4289554480



4289564278

 4289551903

 4289566855

 4289549582

 4289569176

 4289547520

 4289571754

 4289574331

 4289576652

 4289579229

 4289581807

Harmonies

Analogous

The Analogous color harmony consists of three colors that are next to each other on the color wheel.



4290474600



4289559379



4287989068

Triad

The Triadic color harmony groups three colors that are evenly spaced from another and form a triangle on the color wheel.



4289559379



4280849800



4287462837

Complementary

The Complementary color scheme is a pair of colors which are on the opposite of each other on the color wheel.



4289559379



4283663789

Split Complementary

Split-complementary colors differ from the complementary color scheme. The scheme consists of three colors, the original color and two neighbors of the complement color.



4284581822



4289559379



4278228132

Square

The Square scheme is like the rectangle color scheme, but the four colors are evenly spaced on the color wheel.



4289559379



4283732843



4280913848



4289491872

Rectangle

The Rectangle color scheme consists of four colors that form a rectangle on the color wheel.



4289559379



4286679888



4280913848



4286611898

Sweetspot

The Sweet Spot groups the original color and five complimentary colors.



4289559379



4292922556



4289549190



4285555803



4293980400



4285558896

Same Dimension

The Same Dimension uses a secret algorithm to generate beautiful new colors.



4289559379



4292907861



4289570643



4283912782



4288037632



4279699968

Inverse Universe

The Inverse Universe completely reimagines the original color for something new.



4283663789



4283802592



4283652525



4283323223



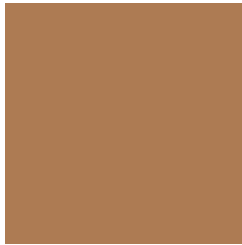
4278211734



4278193431

Previews

White Background



This preview shows how the Android color 4289559379 looks on a white background.

Color Contrast Check

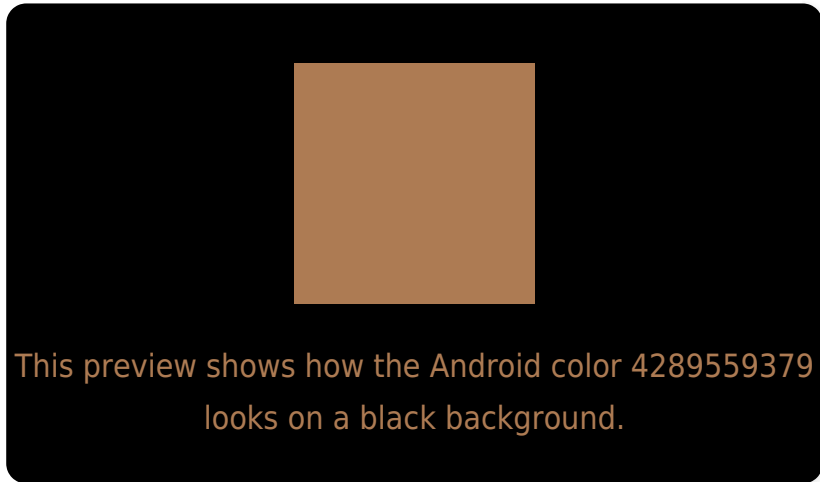
Large Text (above 18pt) WCAG AA ✓ Pass

Any Text WCAG AA ✗ Fail

Large Text (above 18pt) WCAG AAA ✗ Fail

Any Text WCAG AAA ✗ Fail

Black Background



Color Contrast Check

Large Text (above 18pt) WCAG AA ✓ Pass

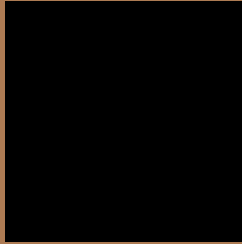
Any Text WCAG AA ✓ Pass

Large Text (above 18pt) WCAG AAA ✓ Pass

Any Text WCAG AAA × Fail

If you want to check with other color combinations, try the [Color Contrast Checker](#).

Android 4289559379 Background



This preview shows how black text looks on a background with the Android color 4289559379.



This preview shows how white text looks on a background with the Android color 4289559379.

Color Blindness Simulation

Color vision deficiency is a very complex topic, and I could not describe the different causes any better than Wikipedia does, so if you want to learn more, you should check out their [article about color blindness](#).

Dichromacy



Original Color
[4289559379](#)

Protanopia
[4287792727](#)

Deuteranopia
[4288839762](#)

Trichromacy



Original Color
4289559379

Protanomaly
4288447062

Deuteranomaly
4289101394

Tritanomaly
4289755246

Monochromacy



Original Color
4289559379

Achromatopsia
4286940549

Achromatomaly
4287922547

CSS Examples

Text

The CSS property to change the color of the text to Android 4289559379 is called "color". The color property can be set on classes, ids or directly on the HTML element.

This example shows how text in the color `rgb(173, 123, 83)` looks like.

```
.text, #text, p{  
    color:rgb(173, 123, 83)  
}
```

If you want to add a text shadow in that color use the text-shadow property, you can generate a text shadow directly with our [CSS Text Shadow Generator](#).

Here you see how black text with a 4 pixel rgb(173, 123, 83) colored shadow looks like.

```
.shadow{ text-shadow: 4px 4px 2px rgb(173, 123, 83) }
```

Border

The CSS property to change the border of an element to Android 4289559379 is called "border". The border property can be set on classes, ids or directly on the HTML element.

This example shows the color as border, it can be applied via the CSS property "border" or "border-color".

```
.border, #border, table{ border:4px solid rgb(173, 123, 83) }
```

If only the border color should be changed use the property `border-color`.

```
.border{ border-color:rgb(173, 123, 83) }
```

If you want to add a box shadow in that color use:

Here you see how a box with a 4 pixel `rgb(173, 123, 83)` colored shadow looks like.

```
.boxshadow{ -moz-box-shadow:4px 4px 4px  
4px rgb(173, 123, 83); -webkit-box-  
shadow:4px 4px 4px 4px rgb(173, 123, 83);  
box-shadow:4px 4px 4px 4px rgb(173, 123,  
83) }
```

Background

The CSS property to change the background color of an element to Android 4289559379 is called "background". The background property can be set on classes, ids or directly on the HTML element.

```
.background, #background, body{  
background: rgb(173, 123, 83) }
```

If only the background color should be changed can be used:

```
.background{ background-color: rgb(173,  
123, 83) }
```

This example shows the color as background, it is applied via the CSS property "background".

To optimize and compress your CSS code, you can use our [online CSS compressor and optimizer](#) based on csstidy. If you want to create a linear or radial gradient as background or border, check our [CSS Gradient Generator](#).

Hey! You found this booklet interesting? Support Converting Colors with the new Membership Option!

The pro membership hides all ads, plus gives you double the colors in the color bucket, and more awesome pro features!

[Learn more, Memberships starting at \\$2.50/m!](#)

**Follow me
on Twitter!**

@ConvertingColor