

Converting Colors

Android(4289559891)

Have a look what the booklet for
Android(4289559891) contains.

Android(4289559891)	3
<i>Conversions</i>	4
<i>Details</i>	6
<i>Harmonies</i>	11
<i>Previews</i>	23
<i>Color Blindness Simulation</i>	26
<i>CSS Examples</i>	29

Color

Android(4289559891)

Conversions

Conversions Part 1

Format	Color
Hex	AD7D53
RGB	173, 125, 83
RGB Percent	68%, 49%, 33%
CMY	0.3216, 0.5098, 0.6745
CMYK	0.00, 0.28, 0.52, 0.32
HSL	28°, 35%, 50%
HSV	28°, 52%, 68%
XYZ	26.1285, 24.1760, 11.4729
YIQ	134.5640, 42.0900, -2.8860

Conversions

Conversions Part 2

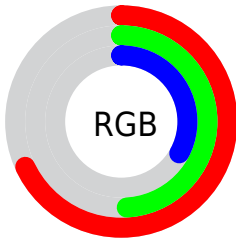
Format	Color
R_{YB}	173, 162, 83
Decimal	11369811
CIE Lab	56.26, 13.63, 30.13
CIE LCh	56, 33.067, 65.661
Yxy	24.1760, 0.4229, 0.3913
Android (android.graphics.Color)	4289559891 (0xFFAD7D53)
YUV	134.5640, -25.4211, 33.7084
Hunter-Lab	49.1691, 8.8092, 20.5839

Details

The Android color `4289559891` is a dark color, and the websafe version is hex `996633`. A complement of this color would be `4283663277`, and the grayscale version is `4287072135`.

A 20% lighter version of the original color is `4293374597`, and `4285942821` is the 20% darker color. If you saturate the color by 10%, you get `4289557570`, and if you desaturate by 10%, it is `4289562212`.

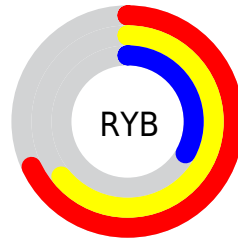
Distribution



Red (68%)

Green (49%)

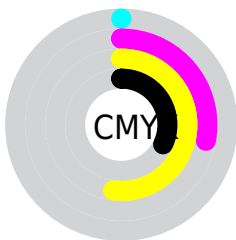
Blue (33%)



Red (68%)

Yellow (64%)

Blue (33%)

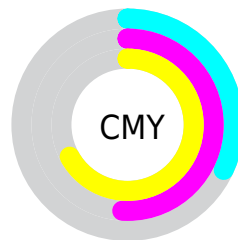


Cyan (0%)

Magenta (28%)

Yellow (52%)

Black (32%)



Cyan (32%)

Magenta (51%)

Yellow (67%)

Brightness & Saturation Gradients

These gradients show how the Android color 4289559891 changes by changing the brightness by 10 percent. The first figure shows a shift by +10% for each color and the second figure -10%.

Similar to the brightness gradients but the following saturation gradients show a change of the Android color 4289559891 by changing the saturation by 10% instead.



4289559891



4289559891

4294967295



4287718459



4293374597



4285942821



4294954400



4284167438



4294961595



4282523648



4294967255



4280879872



4294967283



4278190080



4289559891



4289559891



4289557570



4289562212



4289555248



4289564534

■ 4289552671

■ 4289567111

■ 4289550350

■ 4289569432

■ 4289548544

■ 4289571754

■ 4289574075

■ 4289576652

■ 4289578973

■ 4289581295

Harmonies

Analogous

The Analogous color harmony consists of three colors that are next to each other on the color wheel.



4290540647



4289559891



4287924045

Triad

The Triadic color harmony groups three colors that are evenly spaced from another and form a triangle on the color wheel.



4289559891



4280718988



4287724982

Complementary

The Complementary color scheme is a pair of colors which are on the opposite of each other on the color wheel.



4289559891



4283663277

Split Complementary

Split-complementary colors differ from the complementary color scheme. The scheme consists of three colors, the original color and two neighbors of the complement color.



4284909760



4289559891



4278228391

Square

The Square scheme is like the rectangle color scheme, but the four colors are evenly spaced on the color wheel.



4289559891



4283602030



4281307323



4289754271

Rectangle

The Rectangle color scheme consists of four colors that form a rectangle on the color wheel.



4289559891



4286614866



4281307323



4286874043

Sweetspot

The Sweet Spot groups the original color and five complimentary colors.



4289559891



4292922812



4289549187



4285556059



4293980400



4285558896

Same Dimension

The Same Dimension uses a secret algorithm to generate beautiful new colors.



4289559891



4292908629



4289571155



4283912782



4288038400



4279700224

Inverse Universe

The Inverse Universe completely reimagines the original color for something new.



4283663277



4283801568



4283651757



4283323223



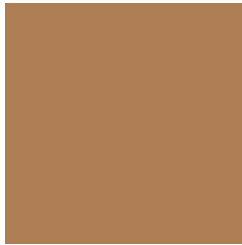
4278210710



4278193175

Previews

White Background



This preview shows how the Android color 4289559891 looks on a white background.

Color Contrast Check

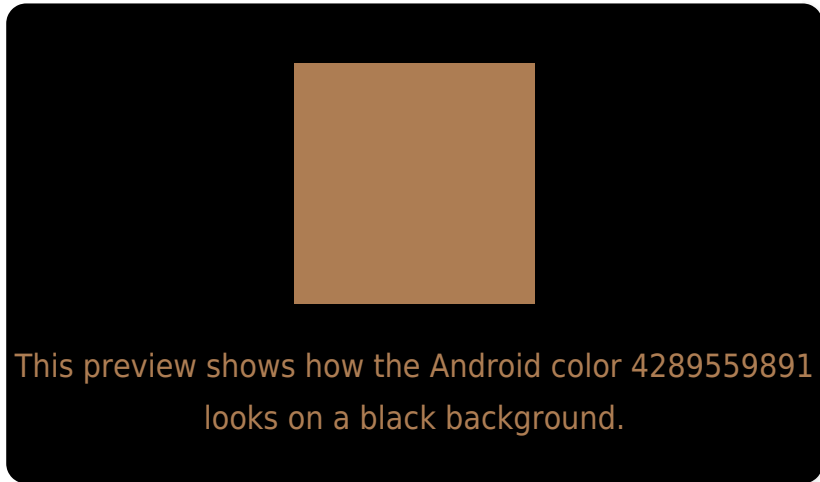
Large Text (above 18pt) WCAG AA ✓ Pass

Any Text WCAG AA ✗ Fail

Large Text (above 18pt) WCAG AAA ✗ Fail

Any Text WCAG AAA ✗ Fail

Black Background



Color Contrast Check

Large Text (above 18pt) WCAG AA ✓ Pass

Any Text WCAG AA ✓ Pass

Large Text (above 18pt) WCAG AAA ✓ Pass

Any Text WCAG AAA × Fail

If you want to check with other color combinations, try the [Color Contrast Checker](#).

Android 4289559891 Background



This preview shows how black text looks on a background with the Android color 4289559891.



This preview shows how white text looks on a background with the Android color 4289559891.

Color Blindness Simulation

Color vision deficiency is a very complex topic, and I could not describe the different causes any better than Wikipedia does, so if you want to learn more, you should check out their [article about color blindness](#).

Dichromacy



Original Color
4289559891

Protanopia
4287858519

Deuteranopia
4288971090

Trichromacy



Original Color
4289559891

Protanomaly
4288447318

Deuteranomaly
4289167442

Tritanomaly
4289755504

Monochromacy



Original Color
4289559891

Achromatopsia
4287072135

Achromatomaly
4287988596

CSS Examples

Text

The CSS property to change the color of the text to Android 4289559891 is called "color". The color property can be set on classes, ids or directly on the HTML element.

This example shows how text in the color `rgb(173, 125, 83)` looks like.

```
.text, #text, p{  
    color:rgb(173, 125, 83)  
}
```

If you want to add a text shadow in that color use the text-shadow property, you can generate a text shadow directly with our [CSS Text Shadow Generator](#).

Here you see how black text with a 4 pixel rgb(173, 125, 83) colored shadow looks like.

```
.shadow{ text-shadow: 4px 4px 2px rgb(173, 125, 83) }
```

Border

The CSS property to change the border of an element to Android 4289559891 is called "border". The border property can be set on classes, ids or directly on the HTML element.

This example shows the color as border, it can be applied via the CSS property "border" or "border-color".

```
.border, #border, table{ border:4px solid rgb(173, 125, 83) }
```

If only the border color should be changed use the property `border-color`.

```
.border{ border-color:rgb(173, 125, 83) }
```

If you want to add a box shadow in that color use:

Here you see how a box with a 4 pixel `rgb(173, 125, 83)` colored shadow looks like.

```
.boxshadow{ -moz-box-shadow:4px 4px 4px  
4px rgb(173, 125, 83); -webkit-box-  
shadow:4px 4px 4px 4px rgb(173, 125, 83);  
box-shadow:4px 4px 4px 4px rgb(173, 125,  
83) }
```

Background

The CSS property to change the background color of an element to Android 4289559891 is called "background". The background property can be set on classes, ids or directly on the HTML element.

```
.background, #background, body{  
background: rgb(173, 125, 83) }
```

If only the background color should be changed can be used:

```
.background{ background-color: rgb(173,  
125, 83) }
```

This example shows the color as background, it is applied via the CSS property "background".

To optimize and compress your CSS code, you can use our [online CSS compressor and optimizer](#) based on csstidy. If you want to create a linear or radial gradient as background or border, check our [CSS Gradient Generator](#).

Hey! You found this booklet interesting? Support Converting Colors with the new Membership Option!

The pro membership hides all ads, plus gives you double the colors in the color bucket, and more awesome pro features!

[Learn more, Memberships starting at \\$2.50/m!](#)

**Follow me
on Twitter!**

@ConvertingColor