

Converting Colors

Android(4289560452)

Have a look what the booklet for
Android(4289560452) contains.

Android(4289560452)	3
<i>Conversions</i>	4
<i>Details</i>	6
<i>Harmonies</i>	11
<i>Previews</i>	23
<i>Color Blindness Simulation</i>	26
<i>CSS Examples</i>	29

Color

Android(4289560452)

Conversions

Conversions Part 1

Format	Color
Hex	AD7F84
RGB	173, 127, 132
RGB Percent	68%, 50%, 52%
CMY	0.3216, 0.5020, 0.4824
CMYK	0.00, 0.27, 0.24, 0.32
HSL	353°, 22%, 59%
HSV	353°, 27%, 68%
XYZ	28.9878, 25.7289, 25.2682
YIQ	141.3240, 25.8110, 11.3070

Conversions

Conversions Part 2

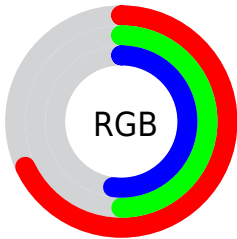
Format	Color
R_{YB}	173, 127, 132
Decimal	11370372
CIE _{Lab}	57.78, 18.55, 4.30
CIE _{LCh}	58, 19.040, 13.054
Yxy	25.7289, 0.3624, 0.3217
Android (android.graphics.Color)	4289560452 (0xFFAD7F84)
YUV	141.3240, -4.5967, 27.7799
Hunter-Lab	50.7237, 13.2436, 5.9711

Details

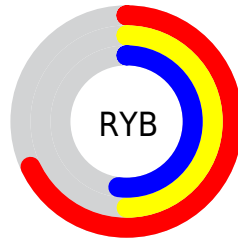
The Android color `4289560452` is a dark color, and the websafe version is hex `996666`. A complement of this color would be `4286557608`, and the grayscale version is `4287466893`.

A 20% lighter version of the original color is `4293244089`, and `4286074451` is the 20% darker color. If you saturate the color by 10%, you get `4289556085`, and if you desaturate by 10%, it is `4289564819`.

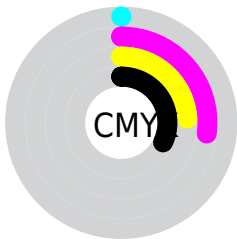
Distribution



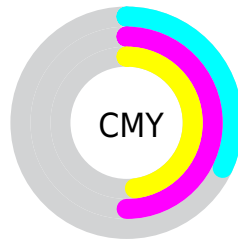
- Red (68%)
- Green (50%)
- Blue (52%)



- Red (68%)
- Yellow (50%)
- Blue (52%)



- Cyan (0%)
- Magenta (27%)
- Yellow (24%)
- Black (32%)



- Cyan (32%)
- Magenta (50%)
- Yellow (48%)

Brightness & Saturation Gradients

These gradients show how the Android color 4289560452 changes by changing the brightness by 10 percent. The first figure shows a shift by +10% for each color and the second figure -10%.

Similar to the brightness gradients but the following saturation gradients show a change of the Android color 4289560452 by changing the saturation by 10% instead.



4289560452



4289560452

4294967295



4287784555



4293244089



4286074451



4294955221



4284364348



4294962417



4282720294



4281207569



4279500800



4278190080



4289560452



4289560452



4289556085



4289564819

 4289551461

 4289569443

 4289547094

 4289573810

 4289542726

 4289578178

 4289538103

 4289582801

 4289533735

 4289587169

 4289529368

 4289591536

 4289527827

 4289593343

Harmonies

Analogous

The Analogous color harmony consists of three colors that are next to each other on the color wheel.



4289101973



4289560452



4289364597

Triad

The Triadic color harmony groups three colors that are evenly spaced from another and form a triangle on the color wheel.



4289560452



4286419314



4285239210

Complementary

The Complementary color scheme is a pair of colors which are on the opposite of each other on the color wheel.



4289560452



4286557608

Split Complementary

Split-complementary colors differ from the complementary color scheme. The scheme consists of three colors, the original color and two neighbors of the complement color.



4284322721



4289560452



4285240449

Square

The Square scheme is like the rectangle color scheme, but the four colors are evenly spaced on the color wheel.



4289560452



4287663210



4284388498



4286679723

Rectangle

The Rectangle color scheme consists of four colors that form a rectangle on the color wheel.



4289560452



4288972142



4284388498



4284846504

Sweetspot

The Sweet Spot groups the original color and five complimentary colors.



4289560452



4292923088



4289232813



4285556070



4293980400



4285558896

Same Dimension

The Same Dimension uses a secret algorithm to generate beautiful new colors.



4289560452



4292909472



4289565055



4283911759



4288020496



4279697410

Inverse Universe

The Inverse Universe completely reimagines the original color for something new.



4289560452



4292909472



4286553005



4283911759



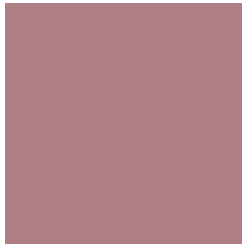
4288020496



4279697410

Previews

White Background



This preview shows how the Android color 4289560452 looks on a white background.

Color Contrast Check

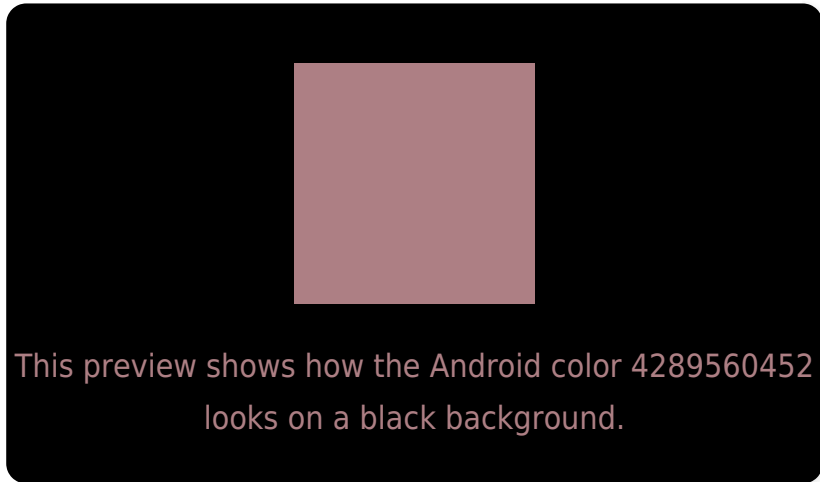
Large Text (above 18pt) WCAG AA ✓ Pass

Any Text WCAG AA ✗ Fail

Large Text (above 18pt) WCAG AAA ✗ Fail

Any Text WCAG AAA ✗ Fail

Black Background



Color Contrast Check

Large Text (above 18pt) WCAG AA ✓ Pass

Any Text WCAG AA ✓ Pass

Large Text (above 18pt) WCAG AAA ✓ Pass

Any Text WCAG AAA × Fail

If you want to check with other color combinations, try the [Color Contrast Checker](#).

Android 4289560452 Background



This preview shows how black text looks on a background with the Android color 4289560452.



This preview shows how white text looks on a background with the Android color 4289560452.

Color Blindness Simulation

Color vision deficiency is a very complex topic, and I could not describe the different causes any better than Wikipedia does, so if you want to learn more, you should check out their [article about color blindness](#).

Dichromacy



Original Color

4289560452

Protanopia

4287531658

Deuteranopia

4288448131

Trichromacy



Original Color

4289560452

Protanomaly

4288251528

Deuteranomaly

4288840579

Tritanomaly

4289560199

Monochromacy



Original Color

4289560452

Achromatopsia

4287466893

Achromatomaly

4288252042

CSS Examples

Text

The CSS property to change the color of the text to Android 4289560452 is called "color". The color property can be set on classes, ids or directly on the HTML element.

This example shows how text in the color `rgb(173, 127, 132)` looks like.

```
.text, #text, p{  
    color:rgb(173, 127, 132)  
}
```

If you want to add a text shadow in that color use the text-shadow property, you can generate a text shadow directly with our [CSS Text Shadow Generator](#).

Here you see how black text with a 4 pixel rgb(173, 127, 132) colored shadow looks like.

```
.shadow{ text-shadow: 4px 4px 2px rgb(173, 127, 132) }
```

Border

The CSS property to change the border of an element to Android 4289560452 is called "border". The border property can be set on classes, ids or directly on the HTML element.

This example shows the color as border, it can be applied via the CSS property "border" or "border-color".

```
.border, #border, table{ border:4px solid rgb(173, 127, 132) }
```

If only the border color should be changed use the property `border-color`.

```
.border{ border-color:rgb(173, 127, 132) }
```

If you want to add a box shadow in that color use:

Here you see how a box with a 4 pixel `rgb(173, 127, 132)` colored shadow looks like.

```
.boxshadow{ -moz-box-shadow:4px 4px 4px  
4px rgb(173, 127, 132); -webkit-box-  
shadow:4px 4px 4px 4px rgb(173, 127, 132);  
box-shadow:4px 4px 4px 4px rgb(173, 127,  
132) }
```

Background

The CSS property to change the background color of an element to Android 4289560452 is called "background". The background property can be set on classes, ids or directly on the HTML element.

```
.background, #background, body{  
background: rgb(173, 127, 132) }
```

If only the background color should be changed can be used:

```
.background{ background-color: rgb(173,  
127, 132) }
```

This example shows the color as background, it is applied via the CSS property "background".

To optimize and compress your CSS code, you can use our [online CSS compressor and optimizer](#) based on csstidy. If you want to create a linear or radial gradient as background or border, check our [CSS Gradient Generator](#).

Hey! You found this booklet interesting? Support Converting Colors with the new Membership Option!

The pro membership hides all ads, plus gives you double the colors in the color bucket, and more awesome pro features!

[Learn more, Memberships starting at \\$2.50/m!](#)

**Follow me
on Twitter!**

@ConvertingColor