

Converting Colors

Android(4289562453)

Have a look what the booklet for
Android(4289562453) contains.

Android(4289562453)	3
<i>Conversions</i>	4
<i>Details</i>	6
<i>Harmonies</i>	11
<i>Previews</i>	23
<i>Color Blindness Simulation</i>	26
<i>CSS Examples</i>	29

Color

Android(4289562453)

Conversions

Conversions Part 1

Format	Color
Hex	AD8755
RGB	173, 135, 85
RGB Percent	68%, 53%, 33%
CMY	0.3216, 0.4706, 0.6667
CMYK	0.00, 0.22, 0.51, 0.32
HSL	34°, 35%, 51%
HSV	34°, 51%, 68%
XYZ	27.5372, 26.8681, 12.3290
YIQ	140.6620, 38.6980, -7.4940

Conversions

Conversions Part 2

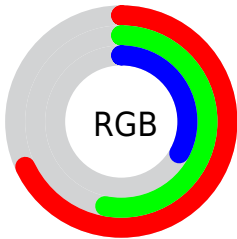
Format	Color
RYB	152, 173, 85
Decimal	11372373
CIELab	58.85, 8.21, 32.30
CIElCh	59, 33.325, 75.735
Yxy	26.8681, 0.4126, 0.4026
Android (android.graphics.Color)	4289562453 (0xFFAD8755)
YUV	140.6620, -27.4414, 28.3604
Hunter-Lab	51.8344, 4.1187, 22.1817

Details

The Android color `4289562453` is a dark color, and the websafe version is hex `CC9966`. A complement of this color would be `4283792301`, and the grayscale version is `4287466893`.

A 20% lighter version of the original color is `4293311624`, and `4285945126` is the 20% darker color. If you saturate the color by 10%, you get `4289560644`, and if you desaturate by 10%, it is `4289564262`.

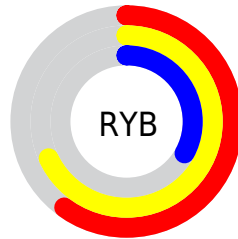
Distribution



Red (68%)

Green (53%)

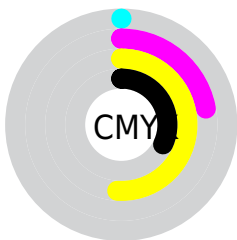
Blue (33%)



Red (60%)

Yellow (68%)

Blue (33%)

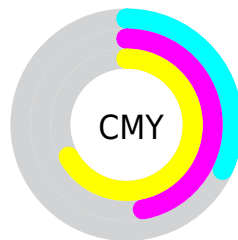


Cyan (0%)

Magenta (22%)

Yellow (51%)

Black (32%)



Cyan (32%)

Magenta (47%)

Yellow (67%)

Brightness & Saturation Gradients

These gradients show how the Android color 4289562453 changes by changing the brightness by 10 percent. The first figure shows a shift by +10% for each color and the second figure -10%.

Similar to the brightness gradients but the following saturation gradients show a change of the Android color 4289562453 by changing the saturation by 10% instead.



4289562453



4289562453

4294967295



4287721021



4293311624



4285945126



4294957218



4284235279



4294964413



4282591232



4294967257



4280947712



4294967286



4278779904



4278190080



4289562453



4289562453



4289560644



4289564262

 4289558578

 4289566328

 4289556769

 4289568137

 4289554704

 4289570202

 4289552896

 4289572011

 4289574077

 4289575886

 4289577951

 4289579761

Harmonies

Analogous

The Analogous color harmony consists of three colors that are next to each other on the color wheel.



4290805093



4289562453



4287730004

Triad

The Triadic color harmony groups three colors that are evenly spaced from another and form a triangle on the color wheel.



4289562453



4280196508



4288970935

Complementary

The Complementary color scheme is a pair of colors which are on the opposite of each other on the color wheel.



4289562453



4283792301

Split Complementary

Split-complementary colors differ from the complementary color scheme. The scheme consists of three colors, the original color and two neighbors of the complement color.



4286352326



4289562453



4279344055

Square

The Square scheme is like the rectangle color scheme, but the four colors are evenly spaced on the color wheel.



4289562453



4283145342



4283078086



4290672797

Rectangle

The Rectangle color scheme consists of four colors that form a rectangle on the color wheel.



4289562453



4286355037



4283078086



4288185533

Sweetspot

The Sweet Spot groups the original color and five complimentary colors.



4289562453



4292924095



4289549691



4285556572



4293980400



4285558896

Same Dimension

The Same Dimension uses a secret algorithm to generate beautiful new colors.



4289562453



4292912472



4289178965



4283913038



4288042240



4279700736

Inverse Universe

The Inverse Universe completely reimagines the original color for something new.



4283792301



4283995104



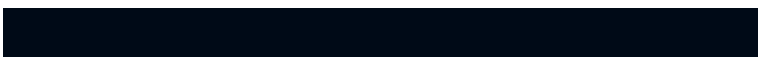
4284175789



4283322967



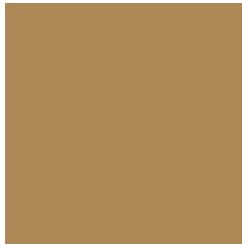
4278206870



4278192663

Previews

White Background



This preview shows how the Android color 4289562453 looks on a white background.

Color Contrast Check

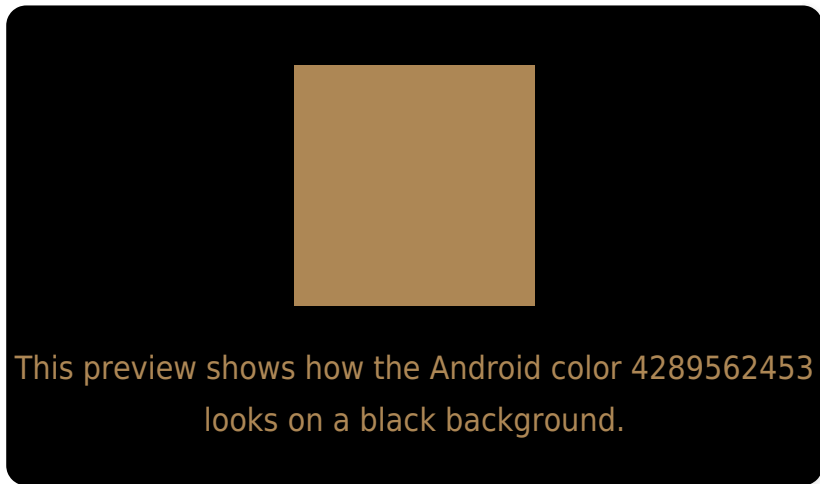
Large Text (above 18pt) WCAG AA ✓ Pass

Any Text WCAG AA ✗ Fail

Large Text (above 18pt) WCAG AAA ✗ Fail

Any Text WCAG AAA ✗ Fail

Black Background



Color Contrast Check

Large Text (above 18pt) WCAG AA ✓ Pass

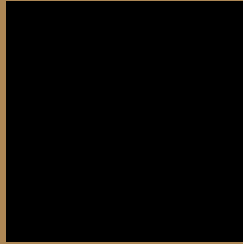
Any Text WCAG AA ✓ Pass

Large Text (above 18pt) WCAG AAA ✓ Pass

Any Text WCAG AAA × Fail

If you want to check with other color combinations, try the [Color Contrast Checker](#).

Android 4289562453 Background



This preview shows how black text looks on a background with the Android color 4289562453.



This preview shows how white text looks on a background with the Android color 4289562453.

Color Blindness Simulation

Color vision deficiency is a very complex topic, and I could not describe the different causes any better than Wikipedia does, so if you want to learn more, you should check out their [article about color blindness](#).

Dichromacy



Original Color
4289562453

Protanopia
4288384600

Deuteranopia
4289496917

Trichromacy



Original Color
4289562453

Protanomaly
4288842583

Deuteranomaly
4289496917

Tritanomaly
4289758071

Monochromacy



Original Color
4289562453

Achromatopsia
4287466893

Achromatomaly
4288252793

CSS Examples

Text

The CSS property to change the color of the text to Android 4289562453 is called "color". The color property can be set on classes, ids or directly on the HTML element.

This example shows how text in the color `rgb(173, 135, 85)` looks like.

```
.text, #text, p{  
    color:rgb(173, 135, 85)  
}
```

If you want to add a text shadow in that color use the text-shadow property, you can generate a text shadow directly with our [CSS Text Shadow Generator](#).

Here you see how black text with a 4 pixel rgb(173, 135, 85) colored shadow looks like.

```
.shadow{ text-shadow: 4px 4px 2px rgb(173, 135, 85) }
```

Border

The CSS property to change the border of an element to Android 4289562453 is called "border". The border property can be set on classes, ids or directly on the HTML element.

This example shows the color as border, it can be applied via the CSS property "border" or "border-color".

```
.border, #border, table{ border:4px solid rgb(173, 135, 85) }
```

If only the border color should be changed use the property border-color.

```
.border{ border-color:rgb(173, 135, 85) }
```

If you want to add a box shadow in that color use:

Here you see how a box with a 4 pixel rgb(173, 135, 85) colored shadow looks like.

```
.boxshadow{ -moz-box-shadow:4px 4px 4px  
4px rgb(173, 135, 85); -webkit-box-  
shadow:4px 4px 4px 4px rgb(173, 135, 85);  
box-shadow:4px 4px 4px 4px rgb(173, 135,  
85) }
```

Background

The CSS property to change the background color of an element to Android 4289562453 is called "background". The background property can be set on classes, ids or directly on the HTML element.

```
.background, #background, body{  
background: rgb(173, 135, 85) }
```

If only the background color should be changed can be used:

```
.background{ background-color: rgb(173,  
135, 85) }
```

This example shows the color as background, it is applied via the CSS property "background".

To optimize and compress your CSS code, you can use our [online CSS compressor and optimizer](#) based on csstidy. If you want to create a linear or radial gradient as background or border, check our [CSS Gradient Generator](#).

Hey! You found this booklet interesting? Support Converting Colors with the new Membership Option!

The pro membership hides all ads, plus gives you double the colors in the color bucket, and more awesome pro features!

[Learn more, Memberships starting at \\$2.50/m!](#)

**Follow me
on Twitter!**

@ConvertingColor