

Converting Colors

Android(4289562985)

Have a look what the booklet for
Android(4289562985) contains.

Android(4289562985)	3
<i>Conversions</i>	4
<i>Details</i>	6
<i>Harmonies</i>	11
<i>Previews</i>	23
<i>Color Blindness Simulation</i>	26
<i>CSS Examples</i>	29

Color

Android(4289562985)

Conversions

Conversions Part 1

Format	Color
Hex	AD8969
RGB	173, 137, 105
RGB Percent	68%, 54%, 41%
CMY	0.3216, 0.4627, 0.5882
CMYK	0.00, 0.21, 0.39, 0.32
HSL	28°, 29%, 55%
HSV	28°, 39%, 68%
XYZ	28.7290, 27.7955, 17.2155
YIQ	144.1160, 31.7280, -2.3200

Conversions

Conversions Part 2

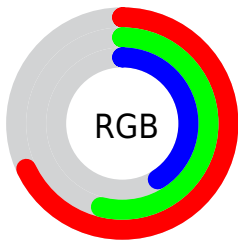
Format	Color
R_{YB}	173, 165, 105
Decimal	11372905
CIE _{Lab}	59.70, 9.25, 22.38
CIE _{LCh}	60, 24.211, 67.546
Yxy	27.7955, 0.3896, 0.3769
Android (android.graphics.Color)	4289562985 (0xFFAD8969)
YUV	144.1160, -19.2842, 25.3313
Hunter-Lab	52.7214, 5.0060, 17.5446

Details

The Android color `4289562985` is a dark color, and the websafe version is hex `CC9966`. A complement of this color would be `4285107629`, and the grayscale version is `4287664272`.

A 20% lighter version of the original color is `4293312156`, and `4286011193` is the 20% darker color. If you saturate the color by 10%, you get `4289560664`, and if you desaturate by 10%, it is `4289565306`.

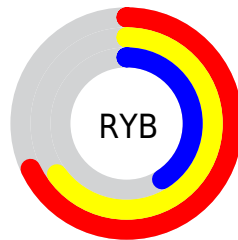
Distribution



Red (68%)

Green (54%)

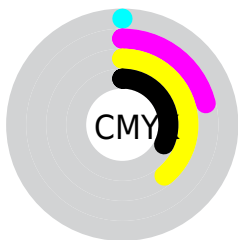
Blue (41%)



Red (68%)

Yellow (65%)

Blue (41%)

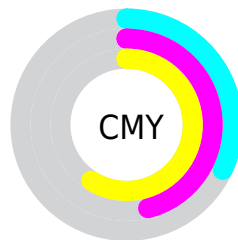


Cyan (0%)

Magenta (21%)

Yellow (39%)

Black (32%)



Cyan (32%)

Magenta (46%)

Yellow (59%)

Brightness & Saturation Gradients

These gradients show how the Android color 4289562985 changes by changing the brightness by 10 percent. The first figure shows a shift by +10% for each color and the second figure -10%.

Similar to the brightness gradients but the following saturation gradients show a change of the Android color 4289562985 by changing the saturation by 10% instead.



4289562985



4289562985

4294967295



4287787089



4293312156



4286011193



4294957751



4284301347



4294965203



4282657294



4294967280



4281144576



4279435264



4278190080



4289562985



4289562985



4289560664



4289565306

■ 4289558342

■ 4289567628

■ 4289556021

■ 4289569949

■ 4289553444

■ 4289572526

■ 4289551122

■ 4289574848

■ 4289548801

■ 4289577169

■ 4289548544

■ 4289579490

■ 4289581811

■ 4289584127

Harmonies

Analogous

The Analogous color harmony consists of three colors that are next to each other on the color wheel.



4290347895



4289562985



4288319589

Triad

The Triadic color harmony groups three colors that are evenly spaced from another and form a triangle on the color wheel.



4289562985



4283800725



4288317618

Complementary

The Complementary color scheme is a pair of colors which are on the opposite of each other on the color wheel.



4289562985



4285107629

Split Complementary

Split-complementary colors differ from the complementary color scheme. The scheme consists of three colors, the original color and two neighbors of the complement color.



4286419130



4289562985



4283407017

Square

The Square scheme is like the rectangle color scheme, but the four colors are evenly spaced on the color wheel.



4289562985



4285176447



4284454583



4289757857

Rectangle

The Rectangle color scheme consists of four colors that form a rectangle on the color wheel.



4289562985



4287272042



4284454583



4287728565

Sweetspot

The Sweet Spot groups the original color and five complimentary colors.



4289562985



4292924101



4289554829



4285556832



4293980400



4285558896

Same Dimension

The Same Dimension uses a secret algorithm to generate beautiful new colors.



4289562985



4292913527



4289571689



4283912782



4288038656



4279700224

Inverse Universe

The Inverse Universe completely reimagines the original color for something new.



4285107629



4286033888



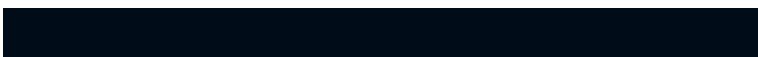
4285098925



4283323223



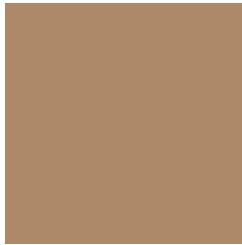
4278210710



4278193175

Previews

White Background



This preview shows how the Android color 4289562985 looks on a white background.

Color Contrast Check

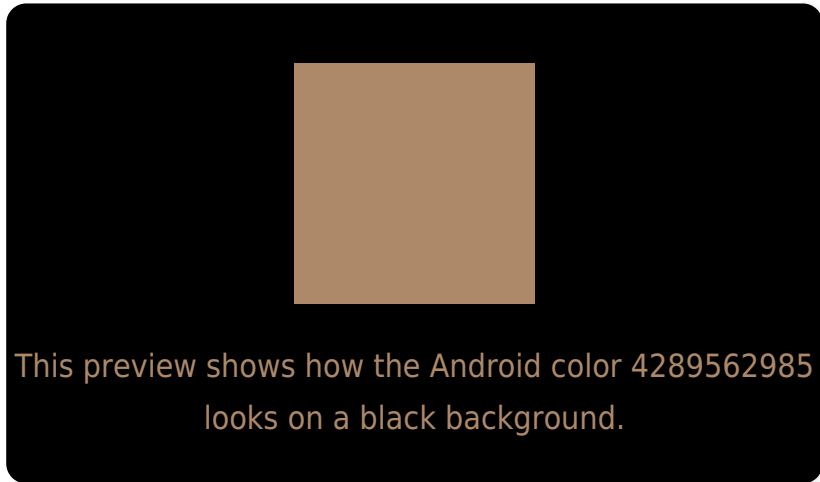
Large Text (above 18pt) WCAG AA ✓ Pass

Any Text WCAG AA ✗ Fail

Large Text (above 18pt) WCAG AAA ✗ Fail

Any Text WCAG AAA ✗ Fail

Black Background



Color Contrast Check

Large Text (above 18pt) WCAG AA ✓ Pass

Any Text WCAG AA ✓ Pass

Large Text (above 18pt) WCAG AAA ✓ Pass

Any Text WCAG AAA × Fail

If you want to check with other color combinations, try the [Color Contrast Checker](#).

Android 4289562985 Background



This preview shows how black text looks on a background with the Android color 4289562985.



This preview shows how white text looks on a background with the Android color 4289562985.

Color Blindness Simulation

Color vision deficiency is a very complex topic, and I could not describe the different causes any better than Wikipedia does, so if you want to learn more, you should check out their [article about color blindness](#).

Dichromacy



Original Color

4289562985

Protanopia

4288319596

Deuteranopia

4289432169

Trichromacy



Original Color
4289562985

Protanomaly
4288777579

Deuteranomaly
4289497705

Tritanomaly
4289758849

Monochromacy



Original Color
4289562985

Achromatopsia
4287664272

Achromatomaly
4288384386

CSS Examples

Text

The CSS property to change the color of the text to Android 4289562985 is called "color". The color property can be set on classes, ids or directly on the HTML element.

This example shows how text in the color `rgb(173, 137, 105)` looks like.

```
.text, #text, p{  
    color:rgb(173, 137, 105)  
}
```

If you want to add a text shadow in that color use the text-shadow property, you can generate a text shadow directly with our [CSS Text Shadow Generator](#).

Here you see how black text with a 4 pixel rgb(173, 137, 105) colored shadow looks like.

```
.shadow{ text-shadow: 4px 4px 2px rgb(173, 137, 105) }
```

Border

The CSS property to change the border of an element to Android 4289562985 is called "border". The border property can be set on classes, ids or directly on the HTML element.

This example shows the color as border, it can be applied via the CSS property "border" or "border-color".

```
.border, #border, table{ border:4px solid rgb(173, 137, 105) }
```

If only the border color should be changed use the property `border-color`.

```
.border{ border-color:rgb(173, 137, 105) }
```

If you want to add a box shadow in that color use:

Here you see how a box with a 4 pixel `rgb(173, 137, 105)` colored shadow looks like.

```
.boxshadow{ -moz-box-shadow:4px 4px 4px  
4px rgb(173, 137, 105); -webkit-box-  
shadow:4px 4px 4px 4px rgb(173, 137, 105);  
box-shadow:4px 4px 4px 4px rgb(173, 137,  
105) }
```

Background

The CSS property to change the background color of an element to Android 4289562985 is called "background". The background property can be set on classes, ids or directly on the HTML element.

```
.background, #background, body{  
background: rgb(173, 137, 105) }
```

If only the background color should be changed can be used:

```
.background{ background-color: rgb(173,  
137, 105) }
```

This example shows the color as background, it is applied via the CSS property "background".

To optimize and compress your CSS code, you can use our [online CSS compressor and optimizer](#) based on csstidy. If you want to create a linear or radial gradient as background or border, check our [CSS Gradient Generator](#).

Hey! You found this booklet interesting? Support Converting Colors with the new Membership Option!

The pro membership hides all ads, plus gives you double the colors in the color bucket, and more awesome pro features!

[Learn more, Memberships starting at \\$2.50/m!](#)

**Follow me
on Twitter!**

@ConvertingColor