

Converting Colors

Android(4289563278)

Have a look what the booklet for
Android(4289563278) contains.

Android(4289563278)	3
<i>Conversions</i>	4
<i>Details</i>	6
<i>Harmonies</i>	11
<i>Previews</i>	23
<i>Color Blindness Simulation</i>	26
<i>CSS Examples</i>	29

Color

Android(4289563278)

Conversions

Conversions Part 1

Format	Color
Hex	AD8A8E
RGB	173, 138, 142
RGB Percent	68%, 54%, 56%
CMY	0.3216, 0.4588, 0.4431
CMYK	0.00, 0.20, 0.18, 0.32
HSL	353°, 18%, 61%
HSV	353°, 20%, 68%
XYZ	31.2045, 29.0142, 29.5468
YIQ	148.9210, 19.5760, 8.6640

Conversions

Conversions Part 2

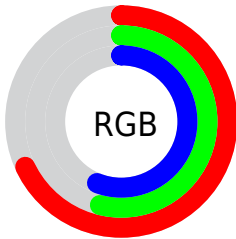
Format	Color
R _Y B	173, 138, 142
Decimal	11373198
CIE Lab	60.79, 13.92, 2.92
CIE LCh	61, 14.223, 11.849
Yxy	29.0142, 0.3476, 0.3232
Android (android.graphics.Color)	4289563278 (0xFFAD8A8E)
YUV	148.9210, -3.4121, 21.1173
Hunter-Lab	53.8648, 9.1438, 5.1826

Details

The Android color `4289563278` is a dark color, and the websafe version is hex `CC9999`. A complement of this color would be `4287278505`, and the grayscale version is `4287993237`.

A 20% lighter version of the original color is `4293247172`, and `4286077020` is the 20% darker color. If you saturate the color by 10%, you get `4289558911`, and if you desaturate by 10%, it is `4289567645`.

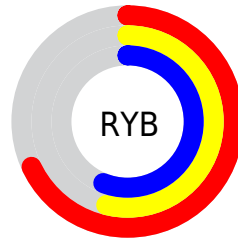
Distribution



Red (68%)

Green (54%)

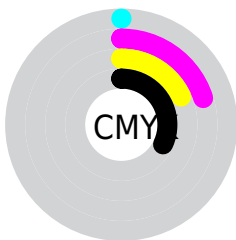
Blue (56%)



Red (68%)

Yellow (54%)

Blue (56%)

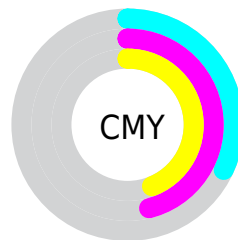


Cyan (0%)

Magenta (20%)

Yellow (18%)

Black (32%)



Cyan (32%)

Magenta (46%)

Yellow (44%)

Brightness & Saturation Gradients

These gradients show how the Android color 4289563278 changes by changing the brightness by 10 percent. The first figure shows a shift by +10% for each color and the second figure -10%.

Similar to the brightness gradients but the following saturation gradients show a change of the Android color 4289563278 by changing the saturation by 10% instead.

 4289563278

 4289563278

4294967295

 4287787124

 4293247172

 4286077020

 4294958048

 4284432452

 4294965500

 4282853934

 4281275674

 4280090624

 4278190080

 4289563278

 4289563278

 4289558911

 4289567645

 4289554287

 4289572269

 4289549920

 4289576636

 4289545553

 4289581003

 4289540929

 4289585627

 4289536562

 4289589994

 4289532195

 4289593337

 4289527828

 4289593343

Harmonies

Analogous

The Analogous color harmony consists of three colors that are next to each other on the color wheel.



4289170331



4289563278



4289498242

Triad

The Triadic color harmony groups three colors that are evenly spaced from another and form a triangle on the color wheel.



4289563278



4287207296



4286355114

Complementary

The Complementary color scheme is a pair of colors which are on the opposite of each other on the color wheel.



4289563278



4287278505

Split Complementary

Split-complementary colors differ from the complementary color scheme. The scheme consists of three colors, the original color and two neighbors of the complement color.



4285766051



4289563278



4286355850

Square

The Square scheme is like the rectangle color scheme, but the four colors are evenly spaced on the color wheel.



4289563278



4288123770



4285766295



4287337131

Rectangle

The Rectangle color scheme consists of four colors that form a rectangle on the color wheel.



4289563278



4289171069



4285766295



4286093224

Sweetspot

The Sweet Spot groups the original color and five complimentary colors.



4289563278



4292924372



4289301165



4285556841



4293980400



4285558896

Same Dimension

The Same Dimension uses a secret algorithm to generate beautiful new colors.



4289563278



4292914097



4289566602



4283911759



4288020497



4279697411

Inverse Universe

The Inverse Universe completely reimagines the original color for something new.



4289563278



4292914097



4287275181



4283911759



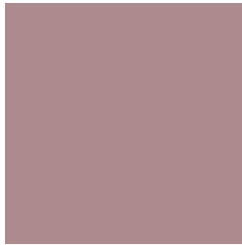
4288020497



4279697411

Previews

White Background



This preview shows how the Android color 4289563278 looks on a white background.

Color Contrast Check

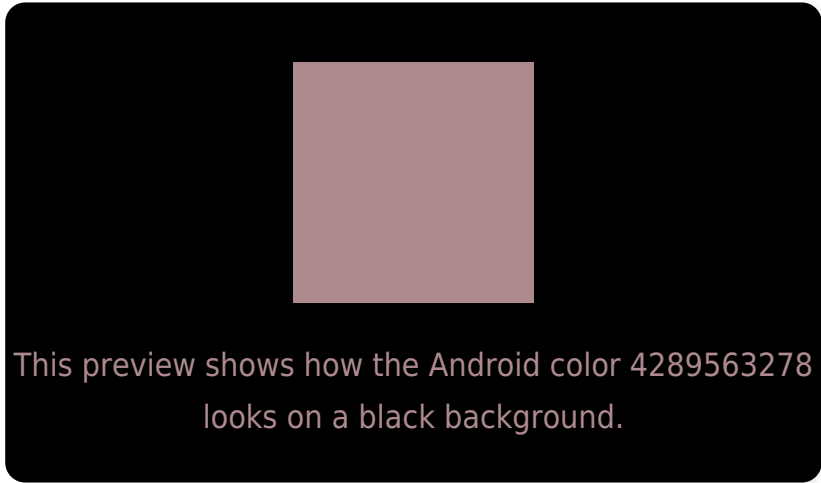
Large Text (above 18pt) WCAG AA ✓ Pass

Any Text WCAG AA ✗ Fail

Large Text (above 18pt) WCAG AAA ✗ Fail

Any Text WCAG AAA ✗ Fail

Black Background



Color Contrast Check

Large Text (above 18pt) WCAG AA ✓ Pass

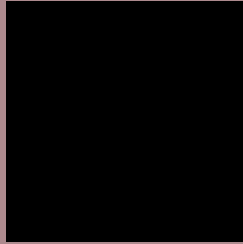
Any Text WCAG AA ✓ Pass

Large Text (above 18pt) WCAG AAA ✓ Pass

Any Text WCAG AAA × Fail

If you want to check with other color combinations, try the [Color Contrast Checker](#).

Android 4289563278 Background



This preview shows how black text looks on a background with the Android color 4289563278.



This preview shows how white text looks on a background with the Android color 4289563278.

Color Blindness Simulation

Color vision deficiency is a very complex topic, and I could not describe the different causes any better than Wikipedia does, so if you want to learn more, you should check out their [article about color blindness](#).

Dichromacy



Original Color

4289563278

Protanopia

4287992467

Deuteranopia

4288908941

Trichromacy



Original Color
4289563278

Protanomaly
4288581521

Deuteranomaly
4289170829

Tritanomaly
4289628562

Monochromacy



Original Color
4289563278

Achromatopsia
4287993237

Achromatomaly
4288582034

CSS Examples

Text

The CSS property to change the color of the text to Android 4289563278 is called "color". The color property can be set on classes, ids or directly on the HTML element.

This example shows how text in the color `rgb(173, 138, 142)` looks like.

```
.text, #text, p{  
    color:rgb(173, 138, 142)  
}
```

If you want to add a text shadow in that color use the text-shadow property, you can generate a text shadow directly with our [CSS Text Shadow Generator](#).

Here you see how black text with a 4 pixel rgb(173, 138, 142) colored shadow looks like.

```
.shadow{ text-shadow: 4px 4px 2px rgb(173, 138, 142) }
```

Border

The CSS property to change the border of an element to Android 4289563278 is called "border". The border property can be set on classes, ids or directly on the HTML element.

This example shows the color as border, it can be applied via the CSS property "border" or "border-color".

```
.border, #border, table{ border:4px solid rgb(173, 138, 142) }
```

If only the border color should be changed use the property `border-color`.

```
.border{ border-color:rgb(173, 138, 142) }
```

If you want to add a box shadow in that color use:

Here you see how a box with a 4 pixel `rgb(173, 138, 142)` colored shadow looks like.

```
.boxshadow{ -moz-box-shadow:4px 4px 4px  
4px rgb(173, 138, 142); -webkit-box-  
shadow:4px 4px 4px 4px rgb(173, 138, 142);  
box-shadow:4px 4px 4px 4px rgb(173, 138,  
142) }
```

Background

The CSS property to change the background color of an element to Android 4289563278 is called "background". The background property can be set on classes, ids or directly on the HTML element.

```
.background, #background, body{  
background: rgb(173, 138, 142) }
```

If only the background color should be changed can be used:

```
.background{ background-color: rgb(173,  
138, 142) }
```

This example shows the color as background, it is applied via the CSS property "background".

To optimize and compress your CSS code, you can use our [online CSS compressor and optimizer](#) based on csstidy. If you want to create a linear or radial gradient as background or border, check our [CSS Gradient Generator](#).

Hey! You found this booklet interesting? Support Converting Colors with the new Membership Option!

The pro membership hides all ads, plus gives you double the colors in the color bucket, and more awesome pro features!

[Learn more, Memberships starting at \\$2.50/m!](#)

**Follow me
on Twitter!**

@ConvertingColor