

Converting Colors

Android(4289563532)

Have a look what the booklet for
Android(4289563532) contains.

Android(4289563532)	3
<i>Conversions</i>	4
<i>Details</i>	6
<i>Harmonies</i>	11
<i>Previews</i>	23
<i>Color Blindness Simulation</i>	26
<i>CSS Examples</i>	29

Color

Android(4289563532)

Conversions

Conversions Part 1

Format	Color
Hex	AD8B8C
RGB	173, 139, 140
RGB Percent	68%, 55%, 55%
CMY	0.3216, 0.4549, 0.4510
CMYK	0.00, 0.20, 0.19, 0.32
HSL	358°, 17%, 61%
HSV	358°, 20%, 68%
XYZ	31.1998, 29.2429, 28.8110
YIQ	149.2800, 19.9430, 7.5190

Conversions

Conversions Part 2

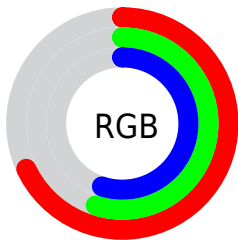
Format	Color
R_{YB}	173, 139, 140
Decimal	11373452
CIE _{Lab}	61.00, 13.03, 4.35
CIE _{LCh}	61, 13.742, 18.461
Yxy	29.2429, 0.3496, 0.3276
Android (android.graphics.Color)	4289563532 (0xFFAD8B8C)
YUV	149.2800, -4.5750, 20.8024
Hunter-Lab	54.0767, 8.3521, 6.2652

Details

The Android color `4289563532` is a dark color, and the websafe version is hex `CC9999`. A complement of this color would be `4287344044`, and the grayscale version is `4287993237`.

A 20% lighter version of the original color is `4293247425`, and `4286077274` is the 20% darker color. If you saturate the color by 10%, you get `4289559163`, and if you desaturate by 10%, it is `4289567901`.

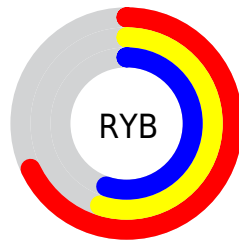
Distribution



Red (68%)

Green (55%)

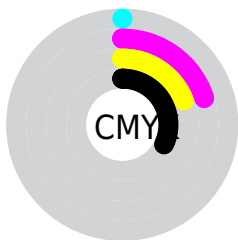
Blue (55%)



Red (68%)

Yellow (55%)

Blue (55%)

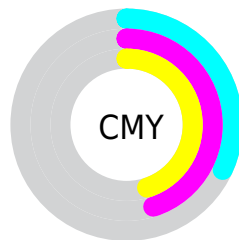


Cyan (0%)

Magenta (20%)

Yellow (19%)

Black (32%)



Cyan (32%)

Magenta (45%)

Yellow (45%)

Brightness & Saturation Gradients

These gradients show how the Android color 4289563532 changes by changing the brightness by 10 percent. The first figure shows a shift by +10% for each color and the second figure -10%.

Similar to the brightness gradients but the following saturation gradients show a change of the Android color 4289563532 by changing the saturation by 10% instead.



4289563532



4289563532

4294967295



4287787379



4293247425



4286077274



4294958301



4284432707



4294965754



4282854189



4281275928



4280090624



4278190080



4289563532



4289563532



4289559163



4289567901

 4289554538

 4289572526

 4289550170

 4289576894

 4289545801

 4289581263

 4289541176

 4289585888

 4289536807

 4289590257

 4289532438

 4289593343

 4289528070

 4289527813

Harmonies

Analogous

The Analogous color harmony consists of three colors that are next to each other on the color wheel.



4289301400



4289563532



4289367425

Triad

The Triadic color harmony groups three colors that are evenly spaced from another and form a triangle on the color wheel.



4289563532



4287076483



4286617259

Complementary

The Complementary color scheme is a pair of colors which are on the opposite of each other on the color wheel.



4289563532



4287344044

Split Complementary

Split-complementary colors differ from the complementary color scheme. The scheme consists of three colors, the original color and two neighbors of the complement color.



4285962661



4289563532



4286290574

Square

The Square scheme is like the rectangle color scheme, but the four colors are evenly spaced on the color wheel.



4289563532



4287993212



4285831834



4287664810

Rectangle

The Rectangle color scheme consists of four colors that form a rectangle on the color wheel.



4289563532



4289040253



4285831834



4286355369

Sweetspot

The Sweet Spot groups the original color and five complimentary colors.



4289563532



4292924371



4289498029



4285556841



4293980400



4285558896

Same Dimension

The Same Dimension uses a secret algorithm to generate beautiful new colors.



4289563532



4292914092



4289567627



4283911758



4288020484



4279697409

Inverse Universe

The Inverse Universe completely reimagines the original color for something new.



4289563532



4292914092



4287339949



4283911758



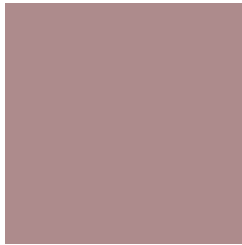
4288020484



4279697409

Previews

White Background



This preview shows how the Android color 4289563532 looks on a white background.

Color Contrast Check

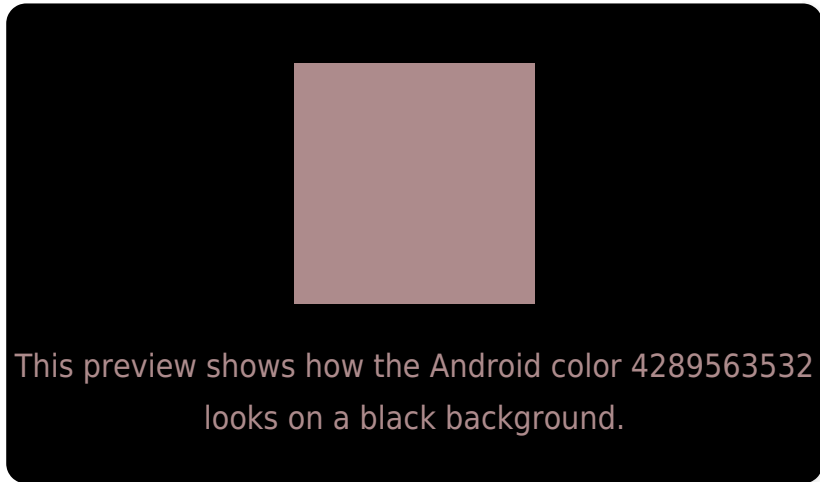
Large Text (above 18pt) WCAG AA ✓ Pass

Any Text WCAG AA ✗ Fail

Large Text (above 18pt) WCAG AAA ✗ Fail

Any Text WCAG AAA ✗ Fail

Black Background



Color Contrast Check

Large Text (above 18pt) WCAG AA ✓ Pass

Any Text WCAG AA ✓ Pass

Large Text (above 18pt) WCAG AAA ✓ Pass

Any Text WCAG AAA × Fail

If you want to check with other color combinations, try the [Color Contrast Checker](#).

Android 4289563532 Background



This preview shows how black text looks on a background with the Android color 4289563532.



This preview shows how white text looks on a background with the Android color 4289563532.

Color Blindness Simulation

Color vision deficiency is a very complex topic, and I could not describe the different causes any better than Wikipedia does, so if you want to learn more, you should check out their [article about color blindness](#).

Dichromacy



Original Color

[4289563532](#)

Protanopia

[4288123792](#)

Deuteranopia

[4289040011](#)

Trichromacy



Original Color
4289563532

Protanomaly
4288647311

Deuteranomaly
4289236363

Tritanomaly
4289628817

Monochromacy



Original Color
4289563532

Achromatopsia
4287993237

Achromatomaly
4288582034

CSS Examples

Text

The CSS property to change the color of the text to Android 4289563532 is called "color". The color property can be set on classes, ids or directly on the HTML element.

This example shows how text in the color `rgb(173, 139, 140)` looks like.

```
.text, #text, p{  
    color:rgb(173, 139, 140)  
}
```

If you want to add a text shadow in that color use the text-shadow property, you can generate a text shadow directly with our [CSS Text Shadow Generator](#).

Here you see how black text with a 4 pixel rgb(173, 139, 140) colored shadow looks like.

```
.shadow{ text-shadow: 4px 4px 2px rgb(173, 139, 140) }
```

Border

The CSS property to change the border of an element to Android 4289563532 is called "border". The border property can be set on classes, ids or directly on the HTML element.

This example shows the color as border, it can be applied via the CSS property "border" or "border-color".

```
.border, #border, table{ border:4px solid rgb(173, 139, 140) }
```

If only the border color should be changed use the property `border-color`.

```
.border{ border-color:rgb(173, 139, 140) }
```

If you want to add a box shadow in that color use:

Here you see how a box with a 4 pixel `rgb(173, 139, 140)` colored shadow looks like.

```
.boxshadow{ -moz-box-shadow:4px 4px 4px  
4px rgb(173, 139, 140); -webkit-box-  
shadow:4px 4px 4px 4px rgb(173, 139, 140);  
box-shadow:4px 4px 4px 4px rgb(173, 139,  
140) }
```

Background

The CSS property to change the background color of an element to Android 4289563532 is called "background". The background property can be set on classes, ids or directly on the HTML element.

```
.background, #background, body{  
background: rgb(173, 139, 140) }
```

If only the background color should be changed can be used:

```
.background{ background-color: rgb(173,  
139, 140) }
```

This example shows the color as background, it is applied via the CSS property "background".

To optimize and compress your CSS code, you can use our [online CSS compressor and optimizer](#) based on csstidy. If you want to create a linear or radial gradient as background or border, check our [CSS Gradient Generator](#).

Hey! You found this booklet interesting? Support Converting Colors with the new Membership Option!

The pro membership hides all ads, plus gives you double the colors in the color bucket, and more awesome pro features!

[Learn more, Memberships starting at \\$2.50/m!](#)

**Follow me
on Twitter!**

@ConvertingColor