

Converting Colors

Android(4289563548)

Have a look what the booklet for
Android(4289563548) contains.

Android(4289563548)	3
<i>Conversions</i>	4
<i>Details</i>	6
<i>Harmonies</i>	11
<i>Previews</i>	23
<i>Color Blindness Simulation</i>	26
<i>CSS Examples</i>	29

Color

Android(4289563548)

Conversions

Conversions Part 1

Format	Color
Hex	AD8B9C
RGB	173, 139, 156
RGB Percent	68%, 55%, 61%
CMY	0.3216, 0.4549, 0.3882
CMYK	0.00, 0.20, 0.10, 0.32
HSL	330°, 17%, 61%
HSV	330°, 20%, 68%
XYZ	32.4669, 29.7498, 35.4836
YIQ	151.1040, 14.8070, 12.4950

Conversions

Conversions Part 2

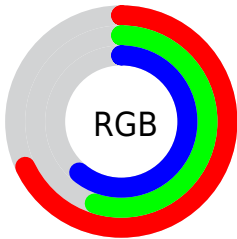
Format	Color
RYB	173, 139, 156
Decimal	11373468
CIELab	61.44, 15.74, -4.12
CIElCh	61, 16.266, 345.333
Yxy	29.7498, 0.3323, 0.3045
Android (android.graphics.Color)	4289563548 (0xFFAD8B9C)
YUV	151.1040, 2.4137, 19.2028
Hunter-Lab	54.5434, 10.8013, -0.3912

Details

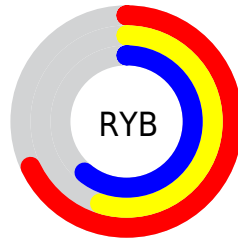
The Android color `4289563548` is a light color, and the websafe version is hex `CC9999`. A complement of this color would be `4287344028`, and the grayscale version is `4288124823`.

A 20% lighter version of the original color is `4293247442`, and `4286077289` is the 20% darker color. If you saturate the color by 10%, you get `4289559187`, and if you desaturate by 10%, it is `4289567909`.

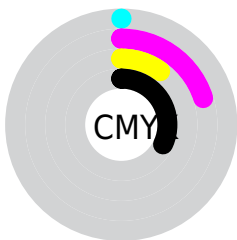
Distribution



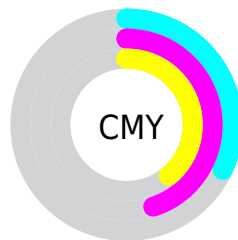
- Red (68%)
- Green (55%)
- Blue (61%)



- Red (68%)
- Yellow (55%)
- Blue (61%)



- Cyan (0%)
- Magenta (20%)
- Yellow (10%)
- Black (32%)



- Cyan (32%)
- Magenta (45%)
- Yellow (39%)

Brightness & Saturation Gradients

These gradients show how the Android color 4289563548 changes by changing the brightness by 10 percent. The first figure shows a shift by +10% for each color and the second figure -10%.

Similar to the brightness gradients but the following saturation gradients show a change of the Android color 4289563548 by changing the saturation by 10% instead.

 4289563548

 4289563548

4294967295

 4287787394

 4293247442

 4286077289

 4294958575

 4284432721

 4294965759

 4282854202

 4281341476

 4280090639

 4278190080

 4289563548

 4289563548

 4289559187

 4289567909

 4289554571

 4289572525

 4289550210

 4289576886

 4289545849

 4289581247

 4289541233

 4289585863

 4289536872

 4289590224

 4289532511

 4289593305

 4289528151

 4289593313

 4289527895

 4289593322

Harmonies

Analogous

The Analogous color harmony consists of three colors that are next to each other on the color wheel.



4288712361



4289563548



4289890957

Triad

The Triadic color harmony groups three colors that are evenly spaced from another and form a triangle on the color wheel.



4289563548



4288190073



4285569960

Complementary

The Complementary color scheme is a pair of colors which are on the opposite of each other on the color wheel.



4289563548



4287344028

Split Complementary

Split-complementary colors differ from the complementary color scheme. The scheme consists of three colors, the original color and two neighbors of the complement color.



4285504923



4289563548



4287076992

Square

The Square scheme is like the rectangle color scheme, but the four colors are evenly spaced on the color wheel.



4289563548



4289106297



4286094477



4286355632

Rectangle

The Rectangle color scheme consists of four colors that form a rectangle on the color wheel.



4289563548



4289891460



4286094477



4285439140

Sweetspot

The Sweet Spot groups the original color and five complimentary colors.



4289563548



4292924378



4288449453



4285556844



4293980400



4285558896

Same Dimension

The Same Dimension uses a secret algorithm to generate beautiful new colors.



4289563548



4292914117



4289563531



4283911762



4288020555



4279697419

Inverse Universe

The Inverse Universe completely reimagines the original color for something new.



4289563548



4292914117



4287344045



4283911762



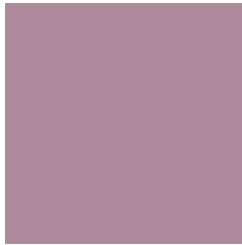
4288020555



4279697419

Previews

White Background



This preview shows how the Android color 4289563548 looks on a white background.

Color Contrast Check

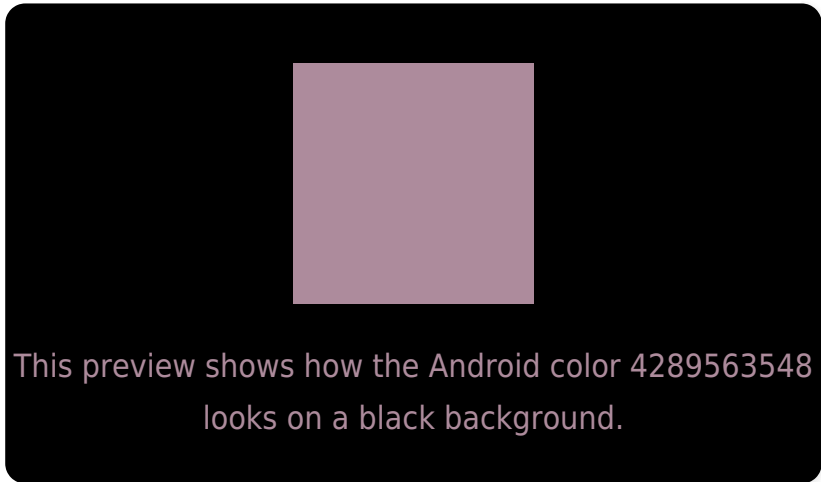
Large Text (above 18pt) WCAG AA ✓ Pass

Any Text WCAG AA ✗ Fail

Large Text (above 18pt) WCAG AAA ✗ Fail

Any Text WCAG AAA ✗ Fail

Black Background



Color Contrast Check

Large Text (above 18pt) WCAG AA ✓ Pass

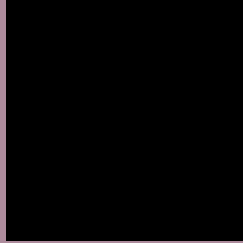
Any Text WCAG AA ✓ Pass

Large Text (above 18pt) WCAG AAA ✓ Pass

Any Text WCAG AAA × Fail

If you want to check with other color combinations, try the [Color Contrast Checker](#).

Android 4289563548 Background



This preview shows how black text looks on a background with the Android color 4289563548.



This preview shows how white text looks on a background with the Android color 4289563548.

Color Blindness Simulation

Color vision deficiency is a very complex topic, and I could not describe the different causes any better than Wikipedia does, so if you want to learn more, you should check out their [article about color blindness](#).


Dichromacy



Original Color
4289563548

Protanopia
4287861921

Deuteranopia
4288712859



Tritanopia
4289498263

Trichromacy



Original Color
4289563548

Protanomaly
4288450975

Deuteranomaly
4289040027

Tritanomaly
4289498265

Monochromacy



Original Color
4289563548

Achromatopsia
4288124823

Achromatomaly
4288648089

CSS Examples

Text

The CSS property to change the color of the text to Android 4289563548 is called "color". The color property can be set on classes, ids or directly on the HTML element.

This example shows how text in the color `rgb(173, 139, 156)` looks like.

```
.text, #text, p{  
    color:rgb(173, 139, 156)  
}
```

If you want to add a text shadow in that color use the text-shadow property, you can generate a text shadow directly with our [CSS Text Shadow Generator](#).

Here you see how black text with a 4 pixel rgb(173, 139, 156) colored shadow looks like.

```
.shadow{ text-shadow: 4px 4px 2px rgb(173, 139, 156) }
```

Border

The CSS property to change the border of an element to Android 4289563548 is called "border". The border property can be set on classes, ids or directly on the HTML element.

This example shows the color as border, it can be applied via the CSS property "border" or "border-color".

```
.border, #border, table{ border:4px solid rgb(173, 139, 156) }
```

If only the border color should be changed use the property `border-color`.

```
.border{ border-color:rgb(173, 139, 156) }
```

If you want to add a box shadow in that color use:

Here you see how a box with a 4 pixel `rgb(173, 139, 156)` colored shadow looks like.

```
.boxshadow{ -moz-box-shadow:4px 4px 4px  
4px rgb(173, 139, 156); -webkit-box-  
shadow:4px 4px 4px 4px rgb(173, 139, 156);  
box-shadow:4px 4px 4px 4px rgb(173, 139,  
156) }
```

Background

The CSS property to change the background color of an element to Android 4289563548 is called "background". The background property can be set on classes, ids or directly on the HTML element.

```
.background, #background, body{  
background: rgb(173, 139, 156) }
```

If only the background color should be changed can be used:

```
.background{ background-color: rgb(173,  
139, 156) }
```

This example shows the color as background, it is applied via the CSS property "background".

To optimize and compress your CSS code, you can use our [online CSS compressor and optimizer](#) based on csstidy. If you want to create a linear or radial gradient as background or border, check our [CSS Gradient Generator](#).

Hey! You found this booklet interesting? Support Converting Colors with the new Membership Option!

The pro membership hides all ads, plus gives you double the colors in the color bucket, and more awesome pro features!

[Learn more, Memberships starting at \\$2.50/m!](#)

**Follow me
on Twitter!**

@ConvertingColor