

Converting Colors

Android(4289564304)

Have a look what the booklet for
Android(4289564304) contains.

| | |
|--|----|
| Android(4289564304) | 3 |
| <i>Conversions</i> | 4 |
| <i>Details</i> | 6 |
| <i>Harmonies</i> | 11 |
| <i>Previews</i> | 23 |
| <i>Color Blindness Simulation</i> | 26 |
| <i>CSS Examples</i> | 29 |

Color

Android(4289564304)

Conversions

Conversions Part 1

| Format | Color |
|-------------|---------------------------|
| Hex | AD8E90 |
| RGB | 173, 142, 144 |
| RGB Percent | 68%, 56%, 56% |
| CMY | 0.3216, 0.4431, 0.4353 |
| CMYK | 0.00, 0.18, 0.17, 0.32 |
| HSL | 356°, 16%, 62% |
| HSV | 356°, 18%, 68% |
| XYZ | 31.9406, 30.2439, 30.5398 |
| YIQ | 151.4970, 17.8340, 7.1940 |

Conversions

Conversions Part 2

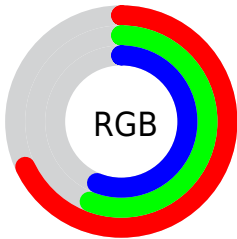
| Format | Color |
|-------------------------------------|-------------------------------|
| R _Y B | 173, 142, 144 |
| Decimal | 11374224 |
| CIE Lab | 61.86, 12.00, 3.33 |
| CIE LCh | 62, 12.453, 15.513 |
| Yxy | 30.2439, 0.3445, 0.3262 |
| Android (android.graphics.Color) | 4289564304 (0xFFAD8E90) |
| YUV | 151.4970, -3.6960, 18.8581 |
| Hunter-Lab | 54.9944, 7.4321, 5.5709 |

Details

The Android color `4289564304` is a light color, and the websafe version is hex `CC9999`. A complement of this color would be `4287540651`, and the grayscale version is `4288190616`.

A 20% lighter version of the original color is `4293248198`, and `4286078046` is the 20% darker color. If you saturate the color by 10%, you get `4289559936`, and if you desaturate by 10%, it is `4289568672`.

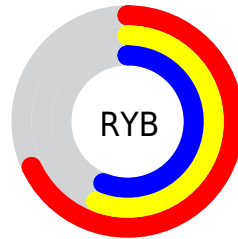
Distribution



Red (68%)

Green (56%)

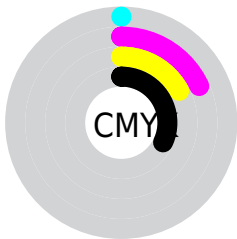
Blue (56%)



Red (68%)

Yellow (56%)

Blue (56%)

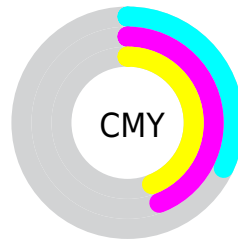


Cyan (0%)

Magenta (18%)

Yellow (17%)

Black (32%)



Cyan (32%)

Magenta (44%)

Yellow (44%)

Brightness & Saturation Gradients

These gradients show how the Android color 4289564304 changes by changing the brightness by 10 percent. The first figure shows a shift by +10% for each color and the second figure -10%.

Similar to the brightness gradients but the following saturation gradients show a change of the Android color 4289564304 by changing the saturation by 10% instead.



4289564304



4289564304

4294967295



4287788150



4293248198



4286078046



4294959330



4284433478



4294966526



4282854960



4281342235



4280156160



4278190080



4289564304



4289564304



4289559936



4289568672

 4289555312

 4289573296

 4289550943

 4289577665

 4289546575

 4289582033

 4289542207

 4289586657

 4289537583

 4289591025

 4289533215

 4289593343

 4289528847

 4289527819

Harmonies

Analogous

The Analogous color harmony consists of three colors that are next to each other on the color wheel.



4289302171



4289564304



4289433734

Triad

The Triadic color harmony groups three colors that are evenly spaced from another and form a triangle on the color wheel.



4289564304



4287404678



4286814378

Complementary

The Complementary color scheme is a pair of colors which are on the opposite of each other on the color wheel.



4289564304



4287540651

Split Complementary

Split-complementary colors differ from the complementary color scheme. The scheme consists of three colors, the original color and two neighbors of the complement color.



4286290853



4289564304



4286618768

Square

The Square scheme is like the rectangle color scheme, but the four colors are evenly spaced on the color wheel.



4289564304



4288190336



4286225563



4287730859

Rectangle

The Rectangle color scheme consists of four colors that form a rectangle on the color wheel.



4289564304



4289172098



4286225563



4286618025

Sweetspot

The Sweet Spot groups the original color and five complimentary colors.



4289564304



4292924886



4289433261



4285557098



4293980400



4285558896

Same Dimension

The Same Dimension uses a secret algorithm to generate beautiful new colors.



4289564304



4292915122



4289567630



4283911759



4288020490



4279697409

Inverse Universe

The Inverse Universe completely reimagines the original color for something new.



4289564304



4292915122



4287537325



4283911759



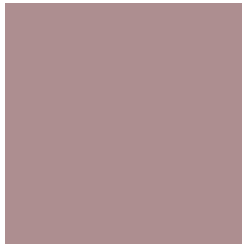
4288020490



4279697409

Previews

White Background



This preview shows how the Android color 4289564304 looks on a white background.

Color Contrast Check

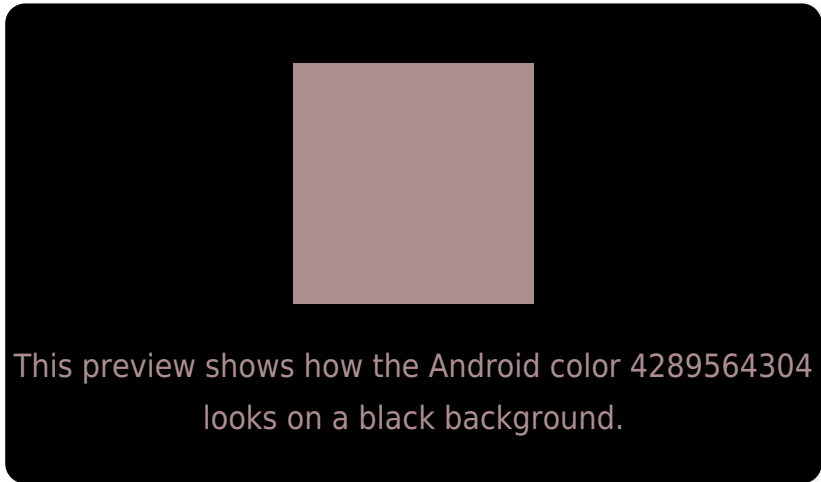
Large Text (above 18pt) WCAG AA × Fail

Any Text WCAG AA × Fail

Large Text (above 18pt) WCAG AAA × Fail

Any Text WCAG AAA × Fail

Black Background



Color Contrast Check

Large Text (above 18pt) WCAG AA ✓ Pass

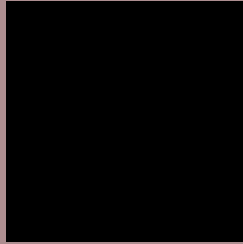
Any Text WCAG AA ✓ Pass

Large Text (above 18pt) WCAG AAA ✓ Pass

Any Text WCAG AAA ✓ Pass

If you want to check with other color combinations, try the [Color Contrast Checker](#).

Android 4289564304 Background



This preview shows how black text looks on a background with the Android color 4289564304.



This preview shows how white text looks on a background with the Android color 4289564304.

Color Blindness Simulation

Color vision deficiency is a very complex topic, and I could not describe the different causes any better than Wikipedia does, so if you want to learn more, you should check out their [article about color blindness](#).

Dichromacy



Original Color
4289564304

Protanopia
4288255380

Deuteranopia
4289106320

Trichromacy



Original Color

4289564304

Protanomaly

4288713363

Deuteranomaly

4289302672

Tritanomaly

4289629589

Monochromacy



Original Color

4289564304

Achromatopsia

4288124823

Achromatomaly

4288648340

CSS Examples

Text

The CSS property to change the color of the text to Android 4289564304 is called "color". The color property can be set on classes, ids or directly on the HTML element.

This example shows how text in the color `rgb(173, 142, 144)` looks like.

```
.text, #text, p{  
    color:rgb(173, 142, 144)  
}
```

If you want to add a text shadow in that color use the text-shadow property, you can generate a text shadow directly with our [CSS Text Shadow Generator](#).

Here you see how black text with a 4 pixel rgb(173, 142, 144) colored shadow looks like.

```
.shadow{ text-shadow: 4px 4px 2px rgb(173, 142, 144) }
```

Border

The CSS property to change the border of an element to Android 4289564304 is called "border". The border property can be set on classes, ids or directly on the HTML element.

This example shows the color as border, it can be applied via the CSS property "border" or "border-color".

```
.border, #border, table{ border:4px solid rgb(173, 142, 144) }
```

If only the border color should be changed use the property `border-color`.

```
.border{ border-color:rgb(173, 142, 144) }
```

If you want to add a box shadow in that color use:

Here you see how a box with a 4 pixel `rgb(173, 142, 144)` colored shadow looks like.

```
.boxshadow{ -moz-box-shadow:4px 4px 4px  
4px rgb(173, 142, 144); -webkit-box-  
shadow:4px 4px 4px 4px rgb(173, 142, 144);  
box-shadow:4px 4px 4px 4px rgb(173, 142,  
144) }
```

Background

The CSS property to change the background color of an element to Android 4289564304 is called "background". The background property can be set on classes, ids or directly on the HTML element.

```
.background, #background, body{  
background: rgb(173, 142, 144) }
```

If only the background color should be changed can be used:

```
.background{ background-color: rgb(173,  
142, 144) }
```

This example shows the color as background, it is applied via the CSS property "background".

To optimize and compress your CSS code, you can use our [online CSS compressor and optimizer](#) based on csstidy. If you want to create a linear or radial gradient as background or border, check our [CSS Gradient Generator](#).

Hey! You found this booklet interesting? Support Converting Colors with the new Membership Option!

The pro membership hides all ads, plus gives you double the colors in the color bucket, and more awesome pro features!

[Learn more, Memberships starting at \\$2.50/m!](#)

**Follow me
on Twitter!**

@ConvertingColor