

Converting Colors

Android(4289568939)

Have a look what the booklet for
Android(4289568939) contains.

Android(4289568939)	3
<i>Conversions</i>	4
<i>Details</i>	6
<i>Harmonies</i>	11
<i>Previews</i>	23
<i>Color Blindness Simulation</i>	26
<i>CSS Examples</i>	29

Color

Android(4289568939)

Conversions

Conversions Part 1

Format	Color
Hex	ADA0AB
RGB	173, 160, 171
RGB Percent	68%, 63%, 67%
CMY	0.3216, 0.3725, 0.3294
CMYK	0.00, 0.08, 0.01, 0.32
HSL	309°, 7%, 65%
HSV	309°, 8%, 68%
XYZ	37.1551, 36.9661, 43.7050
YIQ	165.1410, 4.2170, 6.1770

Conversions

Conversions Part 2

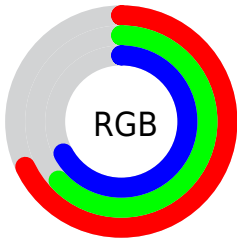
Format	Color
RYB	173, 160, 171
Decimal	11378859
CIELab	67.25, 6.75, -3.99
CIELCh	67, 7.843, 329.376
Yxy	36.9661, 0.3153, 0.3137
Android (android.graphics.Color)	4289568939 (0xFFADA0AB)
YUV	165.1410, 2.8885, 6.8923
Hunter-Lab	60.7998, 2.6827, -0.0599

Details

The Android color `4289568939` is a light color, and the websafe version is hex `999999`. A complement of this color would be `4288720290`, and the grayscale version is `4289045925`.

A 20% lighter version of the original color is `4293187554`, and `4286147959` is the 20% darker color. If you saturate the color by 10%, you get `4289564584`, and if you desaturate by 10%, it is `4289573294`.

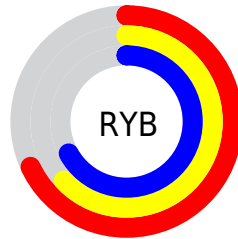
Distribution



Red (68%)

Green (63%)

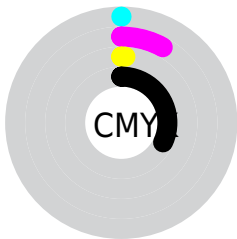
Blue (67%)



Red (68%)

Yellow (63%)

Blue (67%)

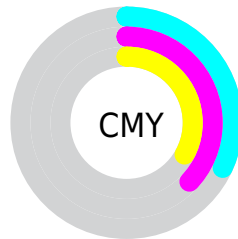


Cyan (0%)

Magenta (8%)

Yellow (1%)

Black (32%)



Cyan (32%)

Magenta (37%)

Yellow (33%)

Brightness & Saturation Gradients

These gradients show how the Android color 4289568939 changes by changing the brightness by 10 percent. The first figure shows a shift by +10% for each color and the second figure -10%.

Similar to the brightness gradients but the following saturation gradients show a change of the Android color 4289568939 by changing the saturation by 10% instead.

 4289568939

 4289568939

4294967295

 4287792785

 4293187554

 4286147959

 4294964223

 4284503134

 4282924359

 4281476912

 4280095515

 4278190080

 4289568939

 4289568939

 4289564584

 4289573294

 4289559974

 4289577904

 4289555619

 4289582259

 4289551264

 4289586614

 4289546910

 4289591224

 4289542299

 4289593275

 4289537944

 4289593278

 4289533590

 4289593280

 4289528979

 4289593283

Harmonies

Analogous

The Analogous color harmony consists of three colors that are next to each other on the color wheel.



4289045168



4289568939



4289896356

Triad

The Triadic color harmony groups three colors that are evenly spaced from another and form a triangle on the color wheel.



4289568939



4289373078



4287801514

Complementary

The Complementary color scheme is a pair of colors which are on the opposite of each other on the color wheel.



4289568939



4288720290

Split Complementary

Split-complementary colors differ from the complementary color scheme. The scheme consists of three colors, the original color and two neighbors of the complement color.



4287932579



4289568939



4288849303

Square

The Square scheme is like the rectangle color scheme, but the four colors are evenly spaced on the color wheel.



4289568939



4289765784



4288325532



4287997616

Rectangle

The Rectangle color scheme consists of four colors that form a rectangle on the color wheel.



4289568939



4289961887



4288325532



4287801512

Sweetspot

The Sweet Spot groups the original color and five complimentary colors.



4289568939



4292926688



4288848045



4285558384



4293980400



4285558896

Same Dimension

The Same Dimension uses a secret algorithm to generate beautiful new colors.



4289568939



4292922589



4289568933



4283911765



4288020607



4279697427

Inverse Universe

The Inverse Universe completely reimagines the original color for something new.



4289568939



4292922589



4288720296



4283911765



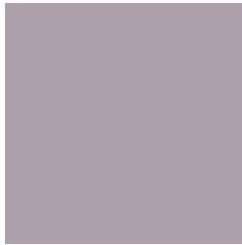
4288020607



4279697427

Previews

White Background



This preview shows how the Android color 4289568939 looks on a white background.

Color Contrast Check

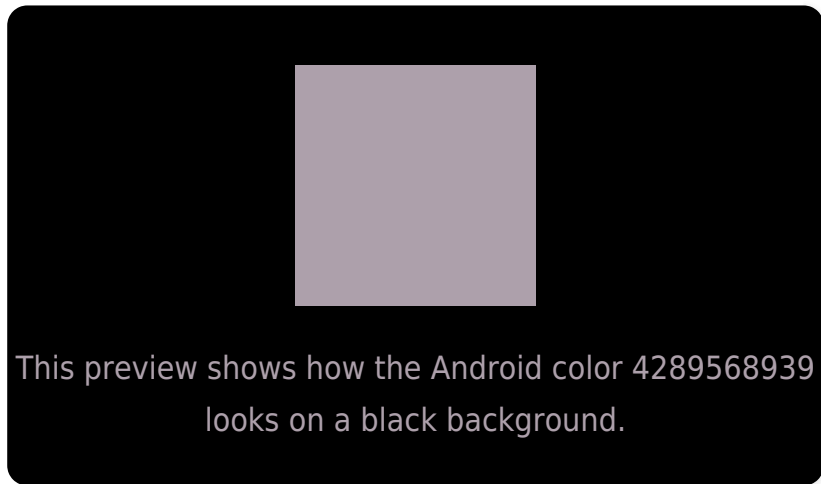
Large Text (above 18pt) WCAG AA × Fail

Any Text WCAG AA × Fail

Large Text (above 18pt) WCAG AAA × Fail

Any Text WCAG AAA × Fail

Black Background



Color Contrast Check

Large Text (above 18pt) WCAG AA ✓ Pass

Any Text WCAG AA ✓ Pass

Large Text (above 18pt) WCAG AAA ✓ Pass

Any Text WCAG AAA ✓ Pass

If you want to check with other color combinations, try the [Color Contrast Checker](#).

Android 4289568939 Background



This preview shows how black text looks on a background with the Android color 4289568939.



This preview shows how white text looks on a background with the Android color 4289568939.

Color Blindness Simulation

Color vision deficiency is a very complex topic, and I could not describe the different causes any better than Wikipedia does, so if you want to learn more, you should check out their [article about color blindness](#).


Dichromacy



Original Color
4289568939

Protanopia
4288979885

Deuteranopia
4289765291



Tritanopia
4289568940

Trichromacy



Original Color
4289568939

Protanomaly
4289176236

Deuteranomaly
4289699755

Tritanomaly
4289568940

Monochromacy



Original Color
4289568939

Achromatopsia
4289045925

Achromatomaly
4289242023

CSS Examples

Text

The CSS property to change the color of the text to Android 4289568939 is called "color". The color property can be set on classes, ids or directly on the HTML element.

This example shows how text in the color `rgb(173, 160, 171)` looks like.

```
.text, #text, p{  
    color:rgb(173, 160, 171)  
}
```

If you want to add a text shadow in that color use the text-shadow property, you can generate a text shadow directly with our [CSS Text Shadow Generator](#).

Here you see how black text with a 4 pixel rgb(173, 160, 171) colored shadow looks like.

```
.shadow{ text-shadow: 4px 4px 2px rgb(173, 160, 171) }
```

Border

The CSS property to change the border of an element to Android 4289568939 is called "border". The border property can be set on classes, ids or directly on the HTML element.

This example shows the color as border, it can be applied via the CSS property "border" or "border-color".

```
.border, #border, table{ border:4px solid rgb(173, 160, 171) }
```

If only the border color should be changed use the property `border-color`.

```
.border{ border-color:rgb(173, 160, 171) }
```

If you want to add a box shadow in that color use:

Here you see how a box with a 4 pixel `rgb(173, 160, 171)` colored shadow looks like.

```
.boxshadow{ -moz-box-shadow:4px 4px 4px  
4px rgb(173, 160, 171); -webkit-box-  
shadow:4px 4px 4px 4px rgb(173, 160, 171);  
box-shadow:4px 4px 4px 4px rgb(173, 160,  
171) }
```

Background

The CSS property to change the background color of an element to Android 4289568939 is called "background". The background property can be set on classes, ids or directly on the HTML element.

```
.background, #background, body{  
background: rgb(173, 160, 171) }
```

If only the background color should be changed can be used:

```
.background{ background-color: rgb(173,  
160, 171) }
```

This example shows the color as background, it is applied via the CSS property "background".

To optimize and compress your CSS code, you can use our [online CSS compressor and optimizer](#) based on csstidy. If you want to create a linear or radial gradient as background or border, check our [CSS Gradient Generator](#).

Hey! You found this booklet interesting? Support Converting Colors with the new Membership Option!

The pro membership hides all ads, plus gives you double the colors in the color bucket, and more awesome pro features!

[Learn more, Memberships starting at \\$2.50/m!](#)

**Follow me
on Twitter!**

@ConvertingColor