

Converting Colors

Android(4289625728)

Have a look what the booklet for
Android(4289625728) contains.

Android(4289625728)	3
<i>Conversions</i>	4
<i>Details</i>	6
<i>Harmonies</i>	11
<i>Previews</i>	23
<i>Color Blindness Simulation</i>	26
<i>CSS Examples</i>	29

Color

Android(4289625728)

Conversions

Conversions Part 1

Format	Color
Hex	AE7E80
RGB	174, 126, 128
RGB Percent	68%, 49%, 50%
CMY	0.3176, 0.5059, 0.4980
CMYK	0.00, 0.28, 0.26, 0.32
HSL	358°, 23%, 59%
HSV	358°, 28%, 68%
XYZ	28.8127, 25.4789, 23.8214
YIQ	140.5800, 27.9660, 10.7980

Conversions

Conversions Part 2

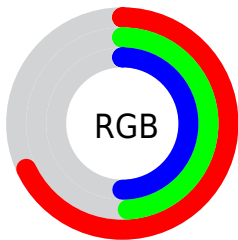
Format	Color
RYB	174, 126, 128
Decimal	11435648
CIELab	57.54, 18.90, 6.28
CIELCh	58, 19.918, 18.376
Yxy	25.4789, 0.3689, 0.3262
Android (android.graphics.Color)	4289625728 (0xFFAE7E80)
YUV	140.5800, -6.2019, 29.3093
Hunter-Lab	50.4766, 13.5560, 7.3529

Details

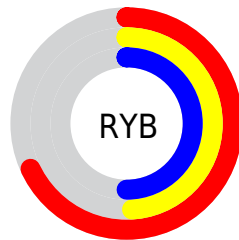
The Android color `4289625728` is a dark color, and the websafe version is hex `996666`. A complement of this color would be `4286492332`, and the grayscale version is `4287466893`.

A 20% lighter version of the original color is `4293309365`, and `4286074191` is the 20% darker color. If you saturate the color by 10%, you get `4289621359`, and if you desaturate by 10%, it is `4289630097`.

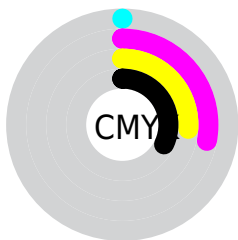
Distribution



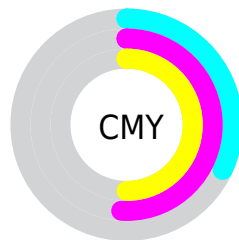
- Red (68%)
- Green (49%)
- Blue (50%)



- Red (68%)
- Yellow (49%)
- Blue (50%)



- Cyan (0%)
- Magenta (28%)
- Yellow (26%)
- Black (32%)



- Cyan (32%)
- Magenta (51%)
- Yellow (50%)

Brightness & Saturation Gradients

These gradients show how the Android color 4289625728 changes by changing the brightness by 10 percent. The first figure shows a shift by +10% for each color and the second figure -10%.

Similar to the brightness gradients but the following saturation gradients show a change of the Android color 4289625728 by changing the saturation by 10% instead.

 4289625728

 4289625728

4294967295

 4287849831

 4293309365

 4286074191

 4294954960

 4284429624

 4294962157

 4282785571

 4281207309

 4279435264

 4278190080

 4289625728

 4289625728

 4289621359

 4289630097

 4289616735

 4289634721

 4289612366

 4289639090

 4289607741

 4289643715

 4289603373

 4289648083

 4289599004

 4289652452

 4289594379

 4289657077

 4289593351

 4289658879

Harmonies

Analogous

The Analogous color harmony consists of three colors that are next to each other on the color wheel.



4289298066



4289625728



4289364337

Triad

The Triadic color harmony groups three colors that are evenly spaced from another and form a triangle on the color wheel.



4289625728



4286091635



4285304492

Complementary

The Complementary color scheme is a pair of colors which are on the opposite of each other on the color wheel.



4289625728



4286492332

Split Complementary

Split-complementary colors differ from the complementary color scheme. The scheme consists of three colors, the original color and two neighbors of the complement color.



4284256932



4289625728



4284847235

Square

The Square scheme is like the rectangle color scheme, but the four colors are evenly spaced on the color wheel.



4289625728



4287401065



4284060820



4286875819

Rectangle

The Rectangle color scheme consists of four colors that form a rectangle on the color wheel.



4289625728



4288841066



4284060820



4284911530

Sweetspot

The Sweet Spot groups the original color and five complimentary colors.



4289625728



4293120466



4289494702



4285753192



4294111986



4285756275

Same Dimension

The Same Dimension uses a secret algorithm to generate beautiful new colors.



4289625728



4293105819



4289631358



4283911758



4288020486



4279697409

Inverse Universe

The Inverse Universe completely reimagines the original color for something new.



4289625728



4293105819



4286486702



4283911758



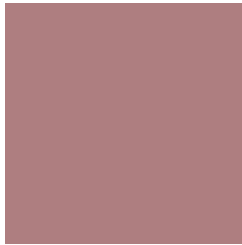
4288020486



4279697409

Previews

White Background



This preview shows how the Android color 4289625728 looks on a white background.

Color Contrast Check

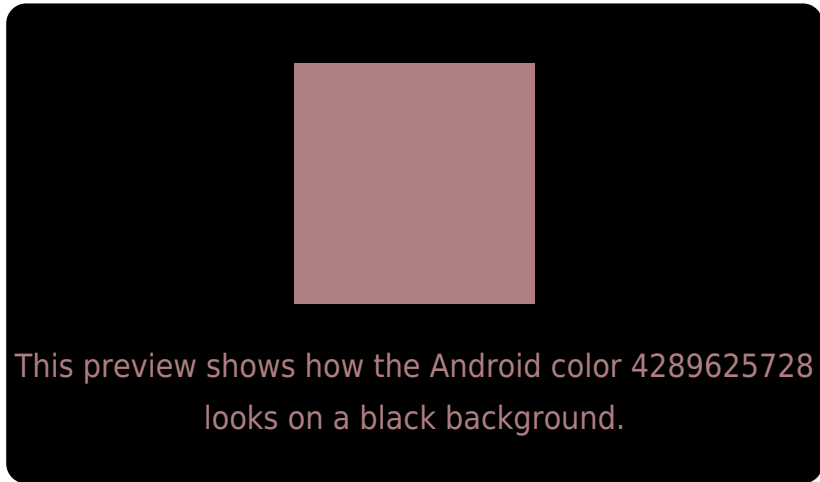
Large Text (above 18pt) WCAG AA ✓ Pass

Any Text WCAG AA ✗ Fail

Large Text (above 18pt) WCAG AAA ✗ Fail

Any Text WCAG AAA ✗ Fail

Black Background



Color Contrast Check

Large Text (above 18pt) WCAG AA ✓ Pass

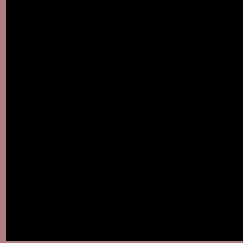
Any Text WCAG AA ✓ Pass

Large Text (above 18pt) WCAG AAA ✓ Pass

Any Text WCAG AAA × Fail

If you want to check with other color combinations, try the [Color Contrast Checker](#).

Android 4289625728 Background



This preview shows how black text looks on a background with the Android color 4289625728.



This preview shows how white text looks on a background with the Android color 4289625728.

Color Blindness Simulation

Color vision deficiency is a very complex topic, and I could not describe the different causes any better than Wikipedia does, so if you want to learn more, you should check out their [article about color blindness](#).


Dichromacy



Original Color
4289625728

Protanopia
4287531654

Deuteranopia
4288448127



Tritanopia
4289691015

Trichromacy



Original Color
4289625728

Protanomaly
4288317060

Deuteranomaly
4288906111

Tritanomaly
4289691012

Monochromacy



Original Color
4289625728

Achromatopsia
4287466893

Achromatomaly
4288252040

CSS Examples

Text

The CSS property to change the color of the text to Android 4289625728 is called "color". The color property can be set on classes, ids or directly on the HTML element.

This example shows how text in the color `rgb(174, 126, 128)` looks like.

```
.text, #text, p{  
    color:rgb(174, 126, 128)  
}
```

If you want to add a text shadow in that color use the text-shadow property, you can generate a text shadow directly with our [CSS Text Shadow Generator](#).

Here you see how black text with a 4 pixel rgb(174, 126, 128) colored shadow looks like.

```
.shadow{ text-shadow: 4px 4px 2px rgb(174, 126, 128) }
```

Border

The CSS property to change the border of an element to Android 4289625728 is called "border". The border property can be set on classes, ids or directly on the HTML element.

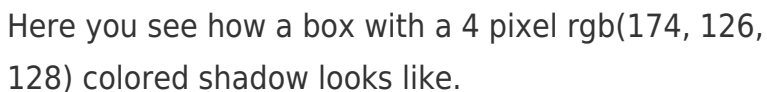
This example shows the color as border, it can be applied via the CSS property "border" or "border-color".

```
.border, #border, table{ border:4px solid rgb(174, 126, 128) }
```

If only the border color should be changed use the property `border-color`.

```
.border{ border-color:rgb(174, 126, 128) }
```

If you want to add a box shadow in that color use:



Here you see how a box with a 4 pixel `rgb(174, 126, 128)` colored shadow looks like.

```
.boxshadow{ -moz-box-shadow:4px 4px 4px 4px rgb(174, 126, 128); -webkit-box-shadow:4px 4px 4px 4px rgb(174, 126, 128); box-shadow:4px 4px 4px 4px rgb(174, 126, 128) }
```

Background

The CSS property to change the background color of an element to Android 4289625728 is called "background". The background property can be set on classes, ids or directly on the HTML element.

```
.background, #background, body{  
background: rgb(174, 126, 128) }
```

If only the background color should be changed can be used:

```
.background{ background-color: rgb(174,  
126, 128) }
```

This example shows the color as background, it is applied via the CSS property "background".

To optimize and compress your CSS code, you can use our [online CSS compressor and optimizer](#) based on csstidy. If you want to create a linear or radial gradient as background or border, check our [CSS Gradient Generator](#).

Hey! You found this booklet interesting? Support Converting Colors with the new Membership Option!

The pro membership hides all ads, plus gives you double the colors in the color bucket, and more awesome pro features!

[Learn more, Memberships starting at \\$2.50/m!](#)

**Follow me
on Twitter!**

@ConvertingColor