

Converting Colors

Android(4289626454)

Have a look what the booklet for
Android(4289626454) contains.

Android(4289626454)	3
<i>Conversions</i>	4
<i>Details</i>	6
<i>Harmonies</i>	11
<i>Previews</i>	23
<i>Color Blindness Simulation</i>	26
<i>CSS Examples</i>	29

Color

Android(4289626454)

Conversions

Conversions Part 1

Format	Color
Hex	AE8156
RGB	174, 129, 86
RGB Percent	68%, 51%, 34%
CMY	0.3176, 0.4941, 0.6627
CMYK	0.00, 0.26, 0.51, 0.32
HSL	29°, 35%, 51%
HSV	29°, 51%, 68%
XYZ	26.9855, 25.3711, 12.2789
YIQ	137.5530, 40.6230, -3.8330

Conversions

Conversions Part 2

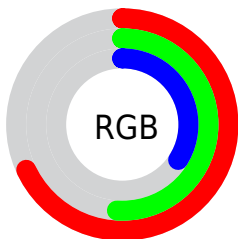
Format	Color
RYB	174, 170, 86
Decimal	11436374
CIELab	57.44, 12.09, 29.99
CIELCh	57, 32.333, 68.034
Yxy	25.3711, 0.4175, 0.3925
Android (android.graphics.Color)	4289626454 (0xFFAE8156)
YUV	137.5530, -25.4156, 31.9640
Hunter-Lab	50.3697, 7.4843, 20.8053

Details

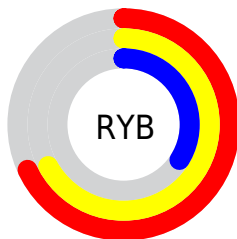
The Android color `4289626454` is a dark color, and the websafe version is hex `CC9966`. A complement of this color would be `4283859886`, and the grayscale version is `4287269514`.

A 20% lighter version of the original color is `4293375624`, and `4286009383` is the 20% darker color. If you saturate the color by 10%, you get `4289624133`, and if you desaturate by 10%, it is `4289628775`.

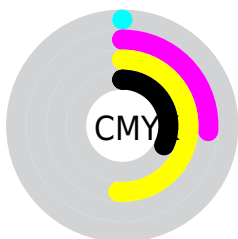
Distribution



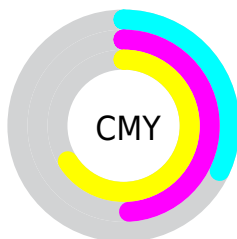
- Red (68%)
- Green (51%)
- Blue (34%)



- Red (68%)
- Yellow (67%)
- Blue (34%)



- Cyan (0%)
- Magenta (26%)
- Yellow (51%)
- Black (32%)



- Cyan (32%)
- Magenta (49%)
- Yellow (66%)

Brightness & Saturation Gradients

These gradients show how the Android color 4289626454 changes by changing the brightness by 10 percent. The first figure shows a shift by +10% for each color and the second figure -10%.

Similar to the brightness gradients but the following saturation gradients show a change of the Android color 4289626454 by changing the saturation by 10% instead.



4289626454



4289626454

4294967295



4287785022



4293375624



4286009383



4294955427



4284299537



4294962878



4282655488



4294967258



4280946432



4294967287



4278386688



4278190080



4289626454



4289626454



4289624133



4289628775

■ 4289621811

■ 4289631097

■ 4289619490

■ 4289633418

■ 4289617168

■ 4289635740

■ 4289615104

■ 4289637805

■ 4289640126

■ 4289642448

■ 4289644769

■ 4289647091

Harmonies

Analogous

The Analogous color harmony consists of three colors that are next to each other on the color wheel.



4290672745



4289626454



4287990609

Triad

The Triadic color harmony groups three colors that are evenly spaced from another and form a triangle on the color wheel.



4289626454



4281047441



4288118966

Complementary

The Complementary color scheme is a pair of colors which are on the opposite of each other on the color wheel.



4289626454



4283859886

Split Complementary

Split-complementary colors differ from the complementary color scheme. The scheme consists of three colors, the original color and two neighbors of the complement color.



4285434562



4289626454



4279081132

Square

The Square scheme is like the rectangle color scheme, but the four colors are evenly spaced on the color wheel.



4289626454



4283733876



4282160062



4290017184

Rectangle

The Rectangle color scheme consists of four colors that form a rectangle on the color wheel.



4289626454



4286681175



4282160062



4287267772

Sweetspot

The Sweet Spot groups the original color and five complimentary colors.



4289626454



4293120705



4289615491



4285753438



4294111986



4285756275

Same Dimension

The Same Dimension uses a secret algorithm to generate beautiful new colors.



4289626454



4293106777



4289637718



4283912782



4288039424



4279700224

Inverse Universe

The Inverse Universe completely reimagines the original color for something new.



4283859886



4284063715



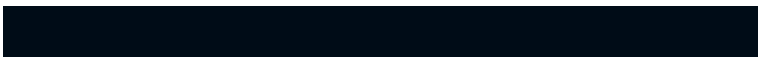
4283848622



4283322967



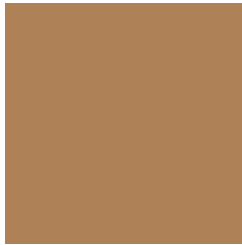
4278209942



4278193175

Previews

White Background



This preview shows how the Android color 4289626454 looks on a white background.

Color Contrast Check

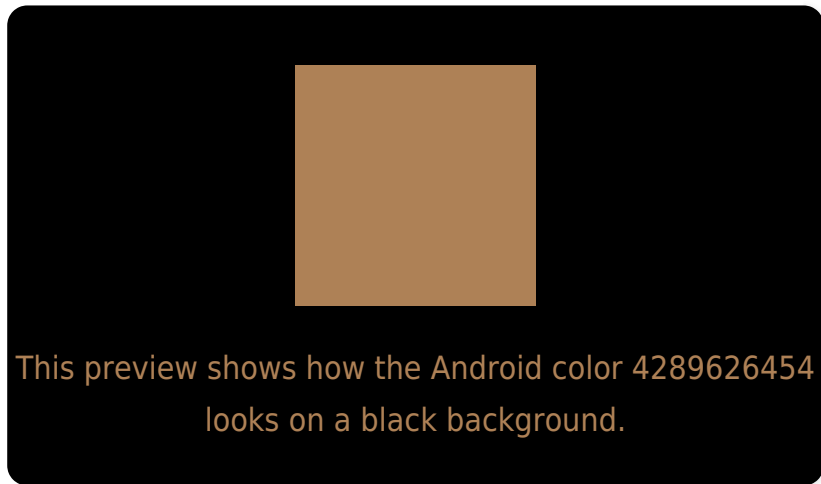
Large Text (above 18pt) WCAG AA ✓ Pass

Any Text WCAG AA ✗ Fail

Large Text (above 18pt) WCAG AAA ✗ Fail

Any Text WCAG AAA ✗ Fail

Black Background



Color Contrast Check

Large Text (above 18pt) WCAG AA ✓ Pass

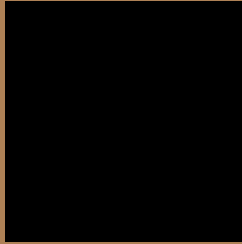
Any Text WCAG AA ✓ Pass

Large Text (above 18pt) WCAG AAA ✓ Pass

Any Text WCAG AAA × Fail

If you want to check with other color combinations, try the [Color Contrast Checker](#).

Android 4289626454 Background



This preview shows how black text looks on a background with the Android color 4289626454.



This preview shows how white text looks on a background with the Android color 4289626454.

Color Blindness Simulation

Color vision deficiency is a very complex topic, and I could not describe the different causes any better than Wikipedia does, so if you want to learn more, you should check out their [article about color blindness](#).

Dichromacy



Original Color
4289626454

Protanopia
4288055898

Deuteranopia
4289168469



Tritanopia
4289887109

Trichromacy



Original Color
4289626454

Protanomaly
4288644953

Deuteranomaly
4289364821

Tritanomaly
4289822068

Monochromacy



Original Color
4289626454

Achromatopsia
4287269514

Achromatomaly
4288120695

CSS Examples

Text

The CSS property to change the color of the text to Android 4289626454 is called "color". The color property can be set on classes, ids or directly on the HTML element.

This example shows how text in the color `rgb(174, 129, 86)` looks like.

```
.text, #text, p{  
    color:rgb(174, 129, 86)  
}
```

If you want to add a text shadow in that color use the text-shadow property, you can generate a text shadow directly with our [CSS Text Shadow Generator](#).

Here you see how black text with a 4 pixel rgb(174, 129, 86) colored shadow looks like.

```
.shadow{ text-shadow: 4px 4px 2px rgb(174, 129, 86) }
```

Border

The CSS property to change the border of an element to Android 4289626454 is called "border". The border property can be set on classes, ids or directly on the HTML element.

This example shows the color as border, it can be applied via the CSS property "border" or "border-color".

```
.border, #border, table{ border:4px solid rgb(174, 129, 86) }
```

If only the border color should be changed use the property `border-color`.

```
.border{ border-color:rgb(174, 129, 86) }
```

If you want to add a box shadow in that color use:

Here you see how a box with a 4 pixel `rgb(174, 129, 86)` colored shadow looks like.

```
.boxshadow{ -moz-box-shadow:4px 4px 4px  
4px rgb(174, 129, 86); -webkit-box-  
shadow:4px 4px 4px 4px rgb(174, 129, 86);  
box-shadow:4px 4px 4px 4px rgb(174, 129,  
86) }
```

Background

The CSS property to change the background color of an element to Android 4289626454 is called "background". The background property can be set on classes, ids or directly on the HTML element.

```
.background, #background, body{  
background: rgb(174, 129, 86) }
```

If only the background color should be changed can be used:

```
.background{ background-color: rgb(174,  
129, 86) }
```

This example shows the color as background, it is applied via the CSS property "background".

To optimize and compress your CSS code, you can use our [online CSS compressor and optimizer](#) based on csstidy. If you want to create a linear or radial gradient as background or border, check our [CSS Gradient Generator](#).

Hey! You found this booklet interesting? Support Converting Colors with the new Membership Option!

The pro membership hides all ads, plus gives you double the colors in the color bucket, and more awesome pro features!

[Learn more, Memberships starting at \\$2.50/m!](#)

**Follow me
on Twitter!**

@ConvertingColor