

Converting Colors

Android(4289628501)

Have a look what the booklet for
Android(4289628501) contains.

Android(4289628501)	3
<i>Conversions</i>	4
<i>Details</i>	6
<i>Harmonies</i>	11
<i>Previews</i>	23
<i>Color Blindness Simulation</i>	26
<i>CSS Examples</i>	29

Color

Android(4289628501)

Conversions

Conversions Part 1

Format	Color
Hex	AE8955
RGB	174, 137, 85
RGB Percent	68%, 54%, 33%
CMY	0.3176, 0.4627, 0.6667
CMYK	0.00, 0.21, 0.51, 0.32
HSL	35°, 35%, 51%
HSV	35°, 51%, 68%
XYZ	28.0409, 27.5459, 12.4333
YIQ	142.1350, 38.7440, -8.3280

Conversions

Conversions Part 2

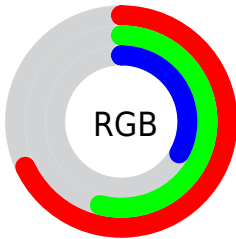
Format	Color
RYB	148, 174, 85
Decimal	11438421
CIELab	59.48, 7.53, 33.10
CIELCh	59, 33.946, 77.191
Yxy	27.5459, 0.4122, 0.4050
Android (android.graphics.Color)	4289628501 (0xFFAE8955)
YUV	142.1350, -28.1676, 27.9456
Hunter-Lab	52.4842, 3.5206, 22.6933

Details

The Android color `4289628501` is a dark color, and the websafe version is hex `CC9966`. A complement of this color would be `4283792046`, and the grayscale version is `4287532686`.

A 20% lighter version of the original color is `4293377672`, and `4286011174` is the 20% darker color. If you saturate the color by 10%, you get `4289626692`, and if you desaturate by 10%, it is `4289630310`.

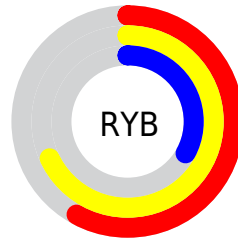
Distribution



Red (68%)

Green (54%)

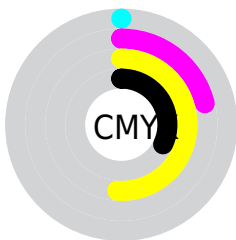
Blue (33%)



Red (58%)

Yellow (68%)

Blue (33%)

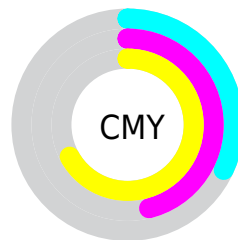


Cyan (0%)

Magenta (21%)

Yellow (51%)

Black (32%)



Cyan (32%)

Magenta (46%)

Yellow (67%)

Brightness & Saturation Gradients

These gradients show how the Android color 4289628501 changes by changing the brightness by 10 percent. The first figure shows a shift by +10% for each color and the second figure -10%.

Similar to the brightness gradients but the following saturation gradients show a change of the Android color 4289628501 by changing the saturation by 10% instead.



4289628501



4289628501

4294967295



4287787069



4293377672



4286011174



4294957730



4284301327



4294965181



4282657280



4294967257



4280948224



4294967286



4279042048



4278190080



4289628501



4289628501



4289626692



4289630310

 4289624882

 4289632120

 4289622817

 4289634185

 4289621007

 4289635995

 4289619456

 4289637804

 4289639613

 4289641679

 4289643488

 4289645298

Harmonies

Analogous

The Analogous color harmony consists of three colors that are next to each other on the color wheel.



4290936677



4289628501



4287796053

Triad

The Triadic color harmony groups three colors that are evenly spaced from another and form a triangle on the color wheel.



4289628501



4279803808



4289233336

Complementary

The Complementary color scheme is a pair of colors which are on the opposite of each other on the color wheel.



4289628501



4283792046

Split Complementary

Split-complementary colors differ from the complementary color scheme. The scheme consists of three colors, the original color and two neighbors of the complement color.



4286614728



4289628501



4279082170

Square

The Square scheme is like the rectangle color scheme, but the four colors are evenly spaced on the color wheel.



4289628501



4283014785



4283209417



4290869661

Rectangle

The Rectangle color scheme consists of four colors that form a rectangle on the color wheel.



4289628501



4286355551



4283209417



4288447935

Sweetspot

The Sweet Spot groups the original color and five complimentary colors.



4289628501



4293121473



4289615226



4285753950



4294111986



4285756275

Same Dimension

The Same Dimension uses a secret algorithm to generate beautiful new colors.



4289628501



4293110105



4289179221



4283913038



4288043008



4279700736

Inverse Universe

The Inverse Universe completely reimagines the original color for something new.



4283792046



4284060387



4284241326



4283322967



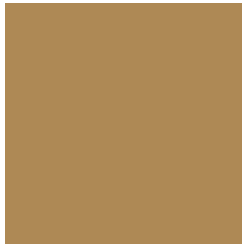
4278206358



4278192663

Previews

White Background



This preview shows how the Android color 4289628501 looks on a white background.

Color Contrast Check

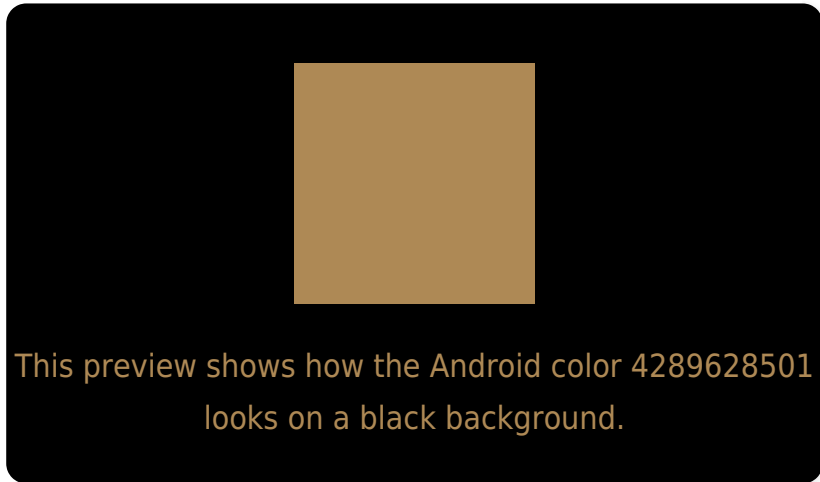
Large Text (above 18pt) WCAG AA ✓ Pass

Any Text WCAG AA ✗ Fail

Large Text (above 18pt) WCAG AAA ✗ Fail

Any Text WCAG AAA ✗ Fail

Black Background



Color Contrast Check

Large Text (above 18pt) WCAG AA ✓ Pass

Any Text WCAG AA ✓ Pass

Large Text (above 18pt) WCAG AAA ✓ Pass

Any Text WCAG AAA × Fail

If you want to check with other color combinations, try the [Color Contrast Checker](#).

Android 4289628501 Background



This preview shows how black text looks on a background with the Android color 4289628501.



This preview shows how white text looks on a background with the Android color 4289628501.

Color Blindness Simulation

Color vision deficiency is a very complex topic, and I could not describe the different causes any better than Wikipedia does, so if you want to learn more, you should check out their [article about color blindness](#).

Dichromacy



Original Color
4289628501

Protanopia
4288515927

Deuteranopia
4289628501



Tritanopia
4289954444

Trichromacy



Original Color
4289628501

Protanomaly
4288908630

Deuteranomaly
4289628501

Tritanomaly
4289824120

Monochromacy



Original Color
4289628501

Achromatopsia
4287532686

Achromatomaly
4288318585

CSS Examples

Text

The CSS property to change the color of the text to Android 4289628501 is called "color". The color property can be set on classes, ids or directly on the HTML element.

This example shows how text in the color `rgb(174, 137, 85)` looks like.

```
.text, #text, p{  
    color:rgb(174, 137, 85)  
}
```

If you want to add a text shadow in that color use the text-shadow property, you can generate a text shadow directly with our [CSS Text Shadow Generator](#).

Here you see how black text with a 4 pixel rgb(174, 137, 85) colored shadow looks like.

```
.shadow{ text-shadow: 4px 4px 2px rgb(174, 137, 85) }
```

Border

The CSS property to change the border of an element to Android 4289628501 is called "border". The border property can be set on classes, ids or directly on the HTML element.

This example shows the color as border, it can be applied via the CSS property "border" or "border-color".

```
.border, #border, table{ border:4px solid rgb(174, 137, 85) }
```

If only the border color should be changed use the property `border-color`.

```
.border{ border-color:rgb(174, 137, 85) }
```

If you want to add a box shadow in that color use:

Here you see how a box with a 4 pixel `rgb(174, 137, 85)` colored shadow looks like.

```
.boxshadow{ -moz-box-shadow:4px 4px 4px  
4px rgb(174, 137, 85); -webkit-box-  
shadow:4px 4px 4px 4px rgb(174, 137, 85);  
box-shadow:4px 4px 4px 4px rgb(174, 137,  
85) }
```

Background

The CSS property to change the background color of an element to Android 4289628501 is called "background". The background property can be set on classes, ids or directly on the HTML element.

```
.background, #background, body{  
background: rgb(174, 137, 85) }
```

If only the background color should be changed can be used:

```
.background{ background-color: rgb(174,  
137, 85) }
```

This example shows the color as background, it is applied via the CSS property "background".

To optimize and compress your CSS code, you can use our [online CSS compressor and optimizer](#) based on csstidy. If you want to create a linear or radial gradient as background or border, check our [CSS Gradient Generator](#).

Hey! You found this booklet interesting? Support Converting Colors with the new Membership Option!

The pro membership hides all ads, plus gives you double the colors in the color bucket, and more awesome pro features!

[Learn more, Memberships starting at \\$2.50/m!](#)

**Follow me
on Twitter!**

@ConvertingColor