

# Converting Colors

Android(4289629041)

Have a look what the booklet for  
Android(4289629041) contains.

<b>Android(4289629041)</b> .....	3
<b><i>Conversions</i></b> .....	4
<b><i>Details</i></b> .....	6
<b><i>Harmonies</i></b> .....	11
<b><i>Previews</i></b> .....	23
<b><i>Color Blindness Simulation</i></b> .....	26
<b><i>CSS Examples</i></b> .....	29

# Color

**Android(4289629041)**

# Conversions

## Conversions Part 1

Format	Color
Hex	AE8B71
RGB	174, 139, 113
RGB Percent	68%, 55%, 44%
CMY	0.3176, 0.4549, 0.5569
CMYK	0.00, 0.20, 0.35, 0.32
HSL	26°, 27%, 56%
HSV	26°, 35%, 68%
XYZ	29.6688, 28.6562, 19.5903
YIQ	146.5010, 29.2060, -0.6660

# Conversions

## Conversions Part 2

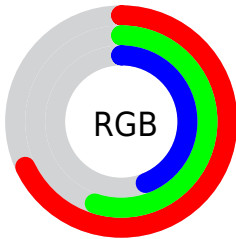
<b>Format</b>	<b>Color</b>
<b>RYB</b>	174, 158, 113
Decimal	11438961
CIELab	60.48, 9.53, 18.95
CIELCh	60, 21.212, 63.294
Yxy	28.6562, 0.3808, 0.3678
Android (android.graphics.Color)	4289629041 (0xFFAE8B71)
YUV	146.5010, -16.5160, 24.1166
Hunter-Lab	53.5315, 5.2503, 15.7744

# Details

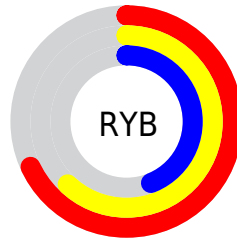
The Android color `4289629041` is a dark color, and the websafe version is hex `CC9999`. A complement of this color would be `4285633710`, and the grayscale version is `4287861651`.

A 20% lighter version of the original color is `4293312677`, and `4286077249` is the 20% darker color. If you saturate the color by 10%, you get `4289626464`, and if you desaturate by 10%, it is `4289631618`.

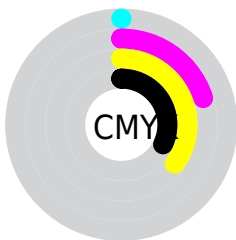
# Distribution



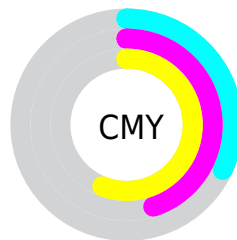
- Red (68%)
- Green (55%)
- Blue (44%)



- Red (68%)
- Yellow (62%)
- Blue (44%)



- Cyan (0%)
- Magenta (20%)
- Yellow (35%)
- Black (32%)



- Cyan (32%)
- Magenta (45%)
- Yellow (56%)

# Brightness & Saturation Gradients

These gradients show how the Android color 4289629041 changes by changing the brightness by 10 percent. The first figure shows a shift by +10% for each color and the second figure -10%.

Similar to the brightness gradients but the following saturation gradients show a change of the Android color 4289629041 by changing the saturation by 10% instead.





4289629041



4289629041

4294967295



4287853144



4293312677



4286077249



4294958272



4284432939



4294965724



4282788630



4294967289



4281276160



4279697408



4278190080



4289629041



4289629041



4289626464



4289631618

 4289623886

 4289634196

 4289621309

 4289636773

 4289618731

 4289639351

 4289616154

 4289641928

 4289613577

 4289644505

 4289612288

 4289647083

 4289649660

 4289652223

# Harmonies

## Analogous

The Analogous color harmony consists of three colors that are next to each other on the color wheel.



4290217598



4289629041



4288581997

# Triad

The Triadic color harmony groups three colors that are evenly spaced from another and form a triangle on the color wheel.



4289629041



4284652691



4288187569

# Complementary

The Complementary color scheme is a pair of colors which are on the opposite of each other on the color wheel.



4289629041



4285633710

# Split Complementary

Split-complementary colors differ from the complementary color scheme. The scheme consists of three colors, the original color and two neighbors of the complement color.



4286485431



4289629041



4284259494

# Square

The Square scheme is like the rectangle color scheme, but the four colors are evenly spaced on the color wheel.



4289629041



4285832064



4284979379



4289496995

# Rectangle

The Rectangle color scheme consists of four colors that form a rectangle on the color wheel.



4289629041



4287665519



4284979379



4287598260



# Sweetspot

The Sweet Spot groups the original color and five complimentary colors.



4289629041



4293121482



4289622421



4285753956



4294111986



4285756275



# Same Dimension

The Same Dimension uses a secret algorithm to generate beautiful new colors.



4289629041



4293110916



4289636721



4283912782



4288036864



4279699968



# Inverse Universe

The Inverse Universe completely reimagines the original color for something new.



4285633710



4286888675



4285626030



4283323223



4278212246

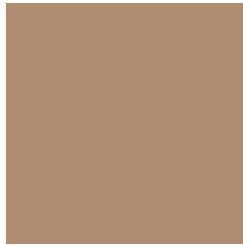


4278193431



# Previews

## White Background



This preview shows how the Android color 4289629041 looks on a white background.

## Color Contrast Check

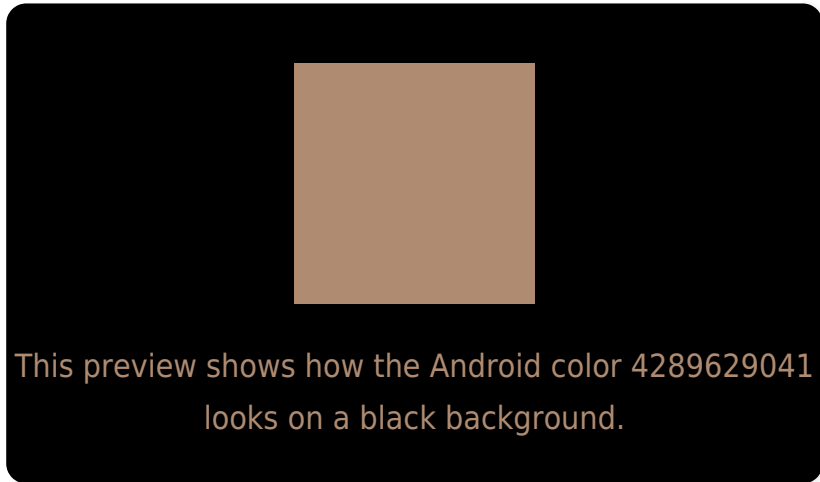
Large Text (above 18pt) WCAG AA ✓ Pass

Any Text WCAG AA ✗ Fail

Large Text (above 18pt) WCAG AAA ✗ Fail

Any Text WCAG AAA ✗ Fail

# Black Background



## Color Contrast Check

Large Text (above 18pt) WCAG AA ✓ Pass

Any Text WCAG AA ✓ Pass

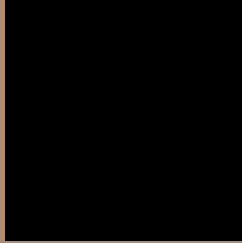
Large Text (above 18pt) WCAG AAA ✓ Pass

Any Text WCAG AAA × Fail

If you want to check with other color combinations, try the [Color Contrast Checker](#).



# Android 4289629041 Background



This preview shows how black text looks on a background with the Android color 4289629041.



This preview shows how white text looks on a background with the Android color 4289629041.

# Color Blindness Simulation

Color vision deficiency is a very complex topic, and I could not describe the different causes any better than Wikipedia does, so if you want to learn more, you should check out their [article about color blindness](#).

## Dichromacy



**Original Color**  
4289629041

**Protanopia**  
4288385652

**Deuteranopia**  
4289432689



# Trichromacy



**Original Color**  
4289629041

**Protanomaly**  
4288843635

**Deuteranomaly**  
4289498225

**Tritanomaly**  
4289759365

# Monochromacy



**Original Color**  
4289629041

**Achromatopsia**  
4287861651

**Achromatomaly**  
4288516231

# CSS Examples

## Text

The CSS property to change the color of the text to Android 4289629041 is called "color". The color property can be set on classes, ids or directly on the HTML element.

This example shows how text in the color `rgb(174, 139, 113)` looks like.

```
.text, #text, p{  
    color:rgb(174, 139, 113)  
}
```

If you want to add a text shadow in that color use the text-shadow property, you can generate a text shadow directly with our [CSS Text Shadow Generator](#).

Here you see how black text with a 4 pixel rgb(174, 139, 113) colored shadow looks like.

```
.shadow{ text-shadow: 4px 4px 2px rgb(174, 139, 113) }
```

## Border

The CSS property to change the border of an element to Android 4289629041 is called "border". The border property can be set on classes, ids or directly on the HTML element.

This example shows the color as border, it can be applied via the CSS property "border" or "border-color".

```
.border, #border, table{ border:4px solid rgb(174, 139, 113) }
```

If only the border color should be changed use the property `border-color`.

```
.border{ border-color:rgb(174, 139, 113) }
```

If you want to add a box shadow in that color use:

Here you see how a box with a 4 pixel `rgb(174, 139, 113)` colored shadow looks like.

```
.boxshadow{ -moz-box-shadow:4px 4px 4px  
4px rgb(174, 139, 113); -webkit-box-  
shadow:4px 4px 4px 4px rgb(174, 139, 113);  
box-shadow:4px 4px 4px 4px rgb(174, 139,  
113) }
```

# Background

The CSS property to change the background color of an element to Android 4289629041 is called "background". The background property can be set on classes, ids or directly on the HTML element.

```
.background, #background, body{  
background: rgb(174, 139, 113) }
```

If only the background color should be changed can be used:

```
.background{ background-color: rgb(174,  
139, 113) }
```

This example shows the color as background, it is applied via the CSS property "background".

To optimize and compress your CSS code, you can use our [online CSS compressor and optimizer](#) based on csstidy. If you want to create a linear or radial gradient as background or border, check our [CSS Gradient Generator](#).



Hey! You found this booklet interesting? Support Converting Colors with the new Membership Option!

The pro membership hides all ads, plus gives you double the colors in the color bucket, and more awesome pro features!

**[Learn more, Memberships starting at \\$2.50/m!](#)**

**Follow me  
on Twitter!**

@ConvertingColor