

# Converting Colors

Android(4289630363)

Have a look what the booklet for  
Android(4289630363) contains.

<b>Android(4289630363)</b> .....	3
<i><b>Conversions</b></i> .....	4
<i><b>Details</b></i> .....	6
<i><b>Harmonies</b></i> .....	11
<i><b>Previews</b></i> .....	23
<i><b>Color Blindness Simulation</b></i> .....	26
<i><b>CSS Examples</b></i> .....	29

# **Color**

**Android(4289630363)**

# Conversions

## Conversions Part 1

Format	Color
Hex	AE909B
RGB	174, 144, 155
RGB Percent	68%, 56%, 61%
CMY	0.3176, 0.4353, 0.3922
CMYK	0.00, 0.17, 0.11, 0.32
HSL	338°, 16%, 62%
HSV	338°, 17%, 68%
XYZ	33.3452, 31.3117, 35.2966
YIQ	154.2240, 14.3490, 9.7810

# Conversions

## Conversions Part 2

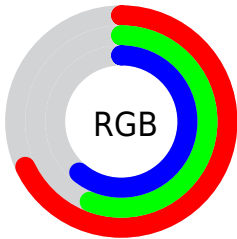
<b>Format</b>	<b>Color</b>
<a href="#">RYB</a>	<a href="#">174, 144, 155</a>
Decimal	<a href="#">11440283</a>
CIELab	<a href="#">62.77, 13.12, -1.58</a>
CIELCh	<a href="#">63, 13.212, 353.134</a>
Yxy	<a href="#">31.3117, 0.3336, 0.3133</a>
Android (android.graphics.Color)	<a href="#">4289630363 (0xFFAE909B)</a>
YUV	<a href="#">154.2240, 0.3826, 17.3436</a>
Hunter-Lab	<a href="#">55.9569, 8.4452, 1.7707</a>

# Details

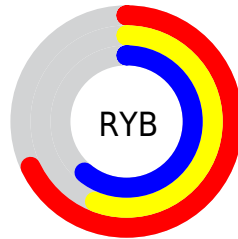
The Android color `4289630363` is a light color, and the websafe version is hex `CC9999`. A complement of this color would be `4287671971`, and the grayscale version is `4288322202`.

A 20% lighter version of the original color is `4293314257`, and `4286144104` is the 20% darker color. If you saturate the color by 10%, you get `4289626000`, and if you desaturate by 10%, it is `4289634726`.

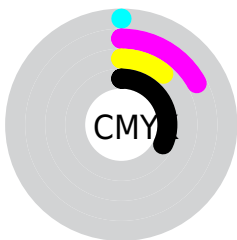
# Distribution



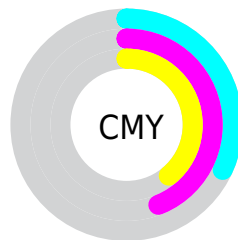
- Red (68%)
- Green (56%)
- Blue (61%)



- Red (68%)
- Yellow (56%)
- Blue (61%)



- Cyan (0%)
- Magenta (17%)
- Yellow (11%)
- Black (32%)



- Cyan (32%)
- Magenta (44%)
- Yellow (39%)

# Brightness & Saturation Gradients

These gradients show how the Android color 4289630363 changes by changing the brightness by 10 percent. The first figure shows a shift by +10% for each color and the second figure -10%.

Similar to the brightness gradients but the following saturation gradients show a change of the Android color 4289630363 by changing the saturation by 10% instead.



 4289630363

 4289630363

4294967295

 4287854209

 4293314257

 4286144104

 4294959854

 4284499536

 4282920761

 4281408036

 4280156174

 4278190080

 4289630363

 4289630363

 4289626000

 4289634726

 4289621381

 4289639345

 4289617018

 4289643708

 4289612399

 4289648327

 4289608036

 4289652690

 4289603673

 4289657053

 4289599054

 4289658856

 4289594691

 4289658867

 4289593408

 4289658878

# Harmonies

## Analogous

The Analogous color harmony consists of three colors that are next to each other on the color wheel.



4289041062



4289630363



4289826959

# Triad

The Triadic color harmony groups three colors that are evenly spaced from another and form a triangle on the color wheel.



4289630363



4288125570



4286422442

# Complementary

The Complementary color scheme is a pair of colors which are on the opposite of each other on the color wheel.



4289630363



4287671971

# Split Complementary

Split-complementary colors differ from the complementary color scheme. The scheme consists of three colors, the original color and two neighbors of the complement color.



4286226337



4289630363



4287274377

# Square

The Square scheme is like the rectangle color scheme, but the four colors are evenly spaced on the color wheel.



4289630363



4288976513



4286554005



4287142575

# Rectangle

The Rectangle color scheme consists of four colors that form a rectangle on the color wheel.



4289630363



4289696136



4286554005



4286291623



# Sweetspot

The Sweet Spot groups the original color and five complimentary colors.



4289630363



4293122268



4288909486



4285754478



4294111986



4285756275



# Same Dimension

The Same Dimension uses a secret algorithm to generate beautiful new colors.



4289630363



4293112773



4289631376



4283911761



4288020535



4279697416



# Inverse Universe

The Inverse Universe completely reimagines the original color for something new.



4289630363



4293112773



4287670958



4283911761



4288020535

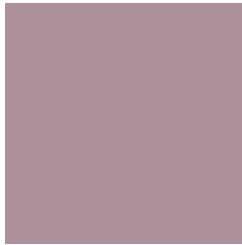


4279697416



# Previews

## White Background



This preview shows how the Android color 4289630363 looks on a white background.

## Color Contrast Check

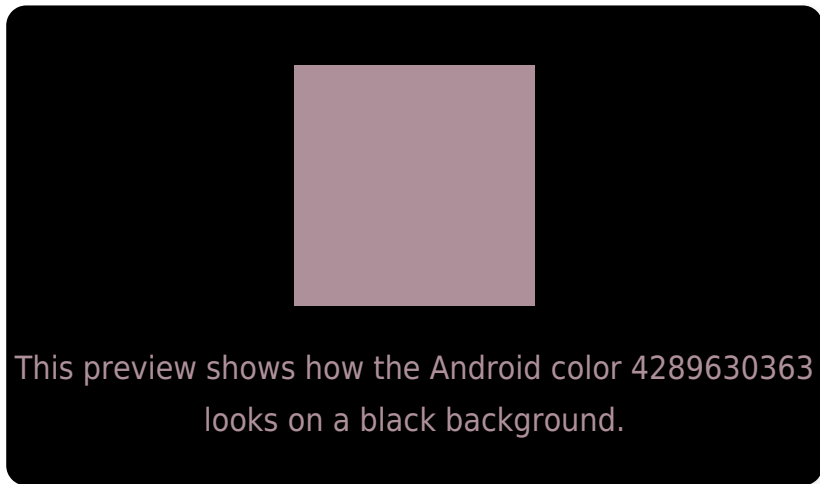
Large Text (above 18pt) WCAG AA × Fail

Any Text WCAG AA × Fail

Large Text (above 18pt) WCAG AAA × Fail

Any Text WCAG AAA × Fail

# Black Background



## Color Contrast Check

Large Text (above 18pt) WCAG AA ✓ Pass

Any Text WCAG AA ✓ Pass

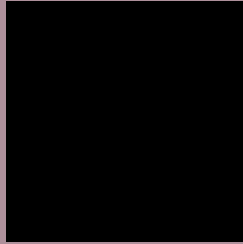
Large Text (above 18pt) WCAG AAA ✓ Pass

Any Text WCAG AAA ✓ Pass

If you want to check with other color combinations, try the [Color Contrast Checker](#).



# Android 4289630363 Background



This preview shows how black text looks on a background with the Android color 4289630363.



This preview shows how white text looks on a background with the Android color 4289630363.

# Color Blindness Simulation

Color vision deficiency is a very complex topic, and I could not describe the different causes any better than Wikipedia does, so if you want to learn more, you should check out their [article about color blindness](#).

## Dichromacy





# Trichromacy



**Original Color**

4289630363

**Protanomaly**

4288779422

**Deuteranomaly**

4289303194

**Tritanomaly**

4289630363

# Monochromacy



**Original Color**

4289630363

**Achromatopsia**

4288322202

**Achromatomaly**

4288779930

# CSS Examples

## Text

The CSS property to change the color of the text to Android 4289630363 is called "color". The color property can be set on classes, ids or directly on the HTML element.

This example shows how text in the color `rgb(174, 144, 155)` looks like.

```
.text, #text, p{  
    color:rgb(174, 144, 155)  
}
```

If you want to add a text shadow in that color use the text-shadow property, you can generate a text shadow directly with our [CSS Text Shadow Generator](#).

Here you see how black text with a 4 pixel rgb(174, 144, 155) colored shadow looks like.

```
.shadow{ text-shadow: 4px 4px 2px rgb(174, 144, 155) }
```

## Border

The CSS property to change the border of an element to Android 4289630363 is called "border". The border property can be set on classes, ids or directly on the HTML element.

This example shows the color as border, it can be applied via the CSS property "border" or "border-color".

```
.border, #border, table{ border:4px solid rgb(174, 144, 155) }
```

If only the border color should be changed use the property `border-color`.

```
.border{ border-color:rgb(174, 144, 155) }
```

If you want to add a box shadow in that color use:

Here you see how a box with a 4 pixel `rgb(174, 144, 155)` colored shadow looks like.

```
.boxshadow{ -moz-box-shadow:4px 4px 4px  
4px rgb(174, 144, 155); -webkit-box-  
shadow:4px 4px 4px 4px rgb(174, 144, 155);  
box-shadow:4px 4px 4px 4px rgb(174, 144,  
155) }
```

# Background

The CSS property to change the background color of an element to Android 4289630363 is called "background". The background property can be set on classes, ids or directly on the HTML element.

```
.background, #background, body{  
background: rgb(174, 144, 155) }
```

If only the background color should be changed can be used:

```
.background{ background-color: rgb(174,  
144, 155) }
```

This example shows the color as background, it is applied via the CSS property "background".

To optimize and compress your CSS code, you can use our [online CSS compressor and optimizer](#) based on csstidy. If you want to create a linear or radial gradient as background or border, check our [CSS Gradient Generator](#).



Hey! You found this booklet interesting? Support Converting Colors with the new Membership Option!

The pro membership hides all ads, plus gives you double the colors in the color bucket, and more awesome pro features!

**[Learn more, Memberships starting at \\$2.50/m!](#)**

**Follow me  
on Twitter!**

@ConvertingColor