

Converting Colors

Android(4289631871)

Have a look what the booklet for
Android(4289631871) contains.

Android(4289631871)	3
<i>Conversions</i>	4
<i>Details</i>	6
<i>Harmonies</i>	11
<i>Previews</i>	23
<i>Color Blindness Simulation</i>	26
<i>CSS Examples</i>	29

Color

Android(4289631871)

Conversions

Conversions Part 1

Format	Color
Hex	AE967F
RGB	174, 150, 127
RGB Percent	68%, 59%, 50%
CMY	0.3176, 0.4118, 0.5020
CMYK	0.00, 0.14, 0.27, 0.32
HSL	29°, 22%, 59%
HSV	29°, 27%, 68%
XYZ	32.1927, 32.3437, 24.6249
YIQ	154.5540, 21.6870, -2.0650

Conversions

Conversions Part 2

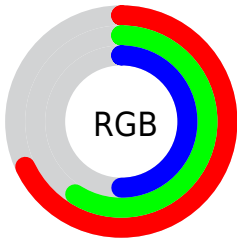
Format	Color
RYB	174, 172, 127
Decimal	11441791
CIELab	63.63, 5.32, 15.43
CIELCh	64, 16.324, 70.991
Yxy	32.3437, 0.3611, 0.3628
Android (android.graphics.Color)	4289631871 (0xFFAE967F)
YUV	154.5540, -13.5841, 17.0541
Hunter-Lab	56.8715, 1.5166, 14.1380

Details

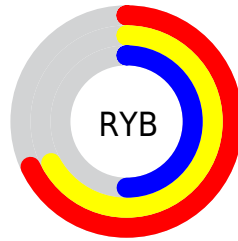
The Android color `4289631871` is a dark color, and the websafe version is hex `999999`. A complement of this color would be `4286551982`, and the grayscale version is `4288387995`.

A 20% lighter version of the original color is `4293315764`, and `4286145358` is the 20% darker color. If you saturate the color by 10%, you get `4289629550`, and if you desaturate by 10%, it is `4289634192`.

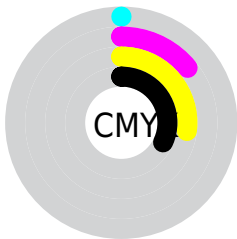
Distribution



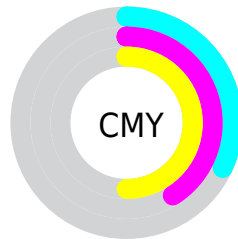
- Red (68%)
- Green (59%)
- Blue (50%)



- Red (68%)
- Yellow (67%)
- Blue (50%)



- Cyan (0%)
- Magenta (14%)
- Yellow (27%)
- Black (32%)



- Cyan (32%)
- Magenta (41%)
- Yellow (50%)

Brightness & Saturation Gradients

These gradients show how the Android color 4289631871 changes by changing the brightness by 10 percent. The first figure shows a shift by +10% for each color and the second figure -10%.

Similar to the brightness gradients but the following saturation gradients show a change of the Android color 4289631871 by changing the saturation by 10% instead.



4289631871



4289631871

4294967295



4287855718



4293315764



4286145358



4294961359



4284500791



4294967276



4282856737



4281344012



4279896064



4278190080



4289631871



4289631871



4289629550



4289634192

 4289627228

 4289636514

 4289624907

 4289638835

 4289622585

 4289641157

 4289620520

 4289643222

 4289618199

 4289645543

 4289615877

 4289647865

 4289615104

 4289650175

 4289652479

Harmonies

Analogous

The Analogous color harmony consists of three colors that are next to each other on the color wheel.



4290220680



4289631871



4288715646

Triad

The Triadic color harmony groups three colors that are evenly spaced from another and form a triangle on the color wheel.



4289631871



4285899679



4288910768

Complementary

The Complementary color scheme is a pair of colors which are on the opposite of each other on the color wheel.



4289631871



4286551982

Split Complementary

Split-complementary colors differ from the complementary color scheme. The scheme consists of three colors, the original color and two neighbors of the complement color.



4287732406



4289631871



4285833645

Square

The Square scheme is like the rectangle color scheme, but the four colors are evenly spaced on the color wheel.



4289631871



4286620304



4286553781



4289892772

Rectangle

The Rectangle color scheme consists of four colors that form a rectangle on the color wheel.



4289631871



4287995521



4286553781



4288517811

Sweetspot

The Sweet Spot groups the original color and five complimentary colors.



4289631871



4293122769



4289626007



4285754727



4294111986



4285756275

Same Dimension

The Same Dimension uses a secret algorithm to generate beautiful new colors.



4289631871



4293115546



4289637759



4283912782



4288039424



4279700224

Inverse Universe

The Inverse Universe completely reimagines the original color for something new.



4286551982



4288331747



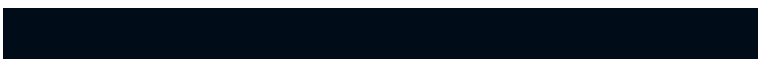
4286546094



4283322967



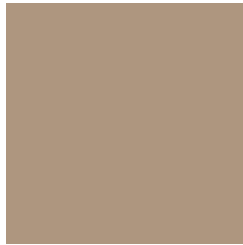
4278209942



4278193175

Previews

White Background



This preview shows how the Android color 4289631871 looks on a white background.

Color Contrast Check

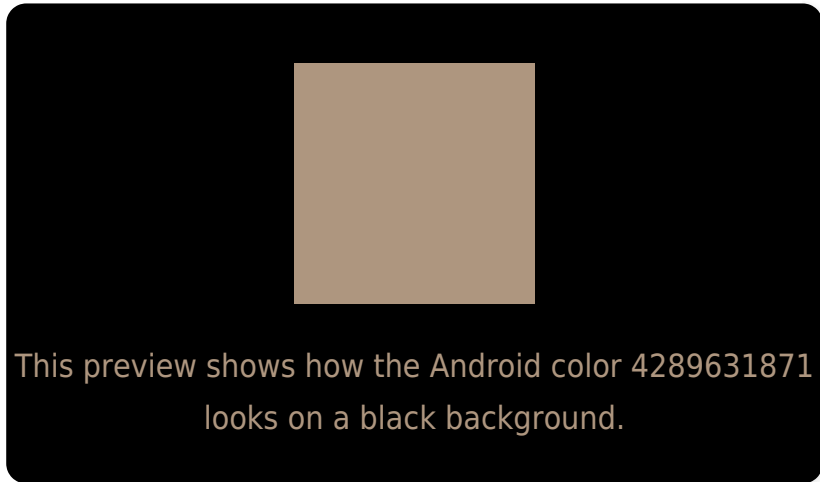
Large Text (above 18pt) WCAG AA × Fail

Any Text WCAG AA × Fail

Large Text (above 18pt) WCAG AAA × Fail

Any Text WCAG AAA × Fail

Black Background



Color Contrast Check

Large Text (above 18pt) WCAG AA ✓ Pass

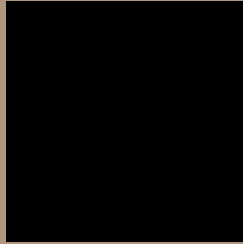
Any Text WCAG AA ✓ Pass

Large Text (above 18pt) WCAG AAA ✓ Pass

Any Text WCAG AAA ✓ Pass

If you want to check with other color combinations, try the [Color Contrast Checker](#).

Android 4289631871 Background



This preview shows how black text looks on a background with the Android color 4289631871.



This preview shows how white text looks on a background with the Android color 4289631871.

Color Blindness Simulation

Color vision deficiency is a very complex topic, and I could not describe the different causes any better than Wikipedia does, so if you want to learn more, you should check out their [article about color blindness](#).

Dichromacy



Original Color


4289631871

Protanopia

4288912001

Deuteranopia

4289893503



Tritanopia
4289893021

Trichromacy



Original Color
4289631871

Protanomaly
4289173888

Deuteranomaly
4289828223

Tritanomaly
4289827730

Monochromacy



Original Color
4289631871

Achromatopsia
4288387995

Achromatomaly
4288846225

CSS Examples

Text

The CSS property to change the color of the text to Android 4289631871 is called "color". The color property can be set on classes, ids or directly on the HTML element.

This example shows how text in the color `rgb(174, 150, 127)` looks like.

```
.text, #text, p{  
    color:rgb(174, 150, 127)  
}
```

If you want to add a text shadow in that color use the text-shadow property, you can generate a text shadow directly with our [CSS Text Shadow Generator](#).

Here you see how black text with a 4 pixel rgb(174, 150, 127) colored shadow looks like.

```
.shadow{ text-shadow: 4px 4px 2px rgb(174, 150, 127) }
```

Border

The CSS property to change the border of an element to Android 4289631871 is called "border". The border property can be set on classes, ids or directly on the HTML element.

This example shows the color as border, it can be applied via the CSS property "border" or "border-color".

```
.border, #border, table{ border:4px solid rgb(174, 150, 127) }
```

If only the border color should be changed use the property border-color.

```
.border{ border-color:rgb(174, 150, 127) }
```

If you want to add a box shadow in that color use:

Here you see how a box with a 4 pixel rgb(174, 150, 127) colored shadow looks like.

```
.boxshadow{ -moz-box-shadow:4px 4px 4px  
4px rgb(174, 150, 127); -webkit-box-  
shadow:4px 4px 4px 4px rgb(174, 150, 127);  
box-shadow:4px 4px 4px 4px rgb(174, 150,  
127) }
```

Background

The CSS property to change the background color of an element to Android 4289631871 is called "background". The background property can be set on classes, ids or directly on the HTML element.

```
.background, #background, body{  
background: rgb(174, 150, 127) }
```

If only the background color should be changed can be used:

```
.background{ background-color: rgb(174,  
150, 127) }
```

This example shows the color as background, it is applied via the CSS property "background".

To optimize and compress your CSS code, you can use our [online CSS compressor and optimizer](#) based on csstidy. If you want to create a linear or radial gradient as background or border, check our [CSS Gradient Generator](#).

Hey! You found this booklet interesting? Support Converting Colors with the new Membership Option!

The pro membership hides all ads, plus gives you double the colors in the color bucket, and more awesome pro features!

[Learn more, Memberships starting at \\$2.50/m!](#)

**Follow me
on Twitter!**

@ConvertingColor