

# Converting Colors

Android(4289676124)

Have a look what the booklet for  
Android(4289676124) contains.

<b>Android(4289676124)</b> .....	3
<b><i>Conversions</i></b> .....	4
<b><i>Details</i></b> .....	6
<b><i>Harmonies</i></b> .....	11
<b><i>Previews</i></b> .....	23
<b><i>Color Blindness Simulation</i></b> .....	26
<b><i>CSS Examples</i></b> .....	29

# Color

**Android(4289676124)**

# Conversions

## Conversions Part 1

Format	Color
Hex	AF435C
RGB	175, 67, 92
RGB Percent	69%, 26%, 36%
CMY	0.3137, 0.7373, 0.6392
CMYK	0.00, 0.62, 0.47, 0.31
HSL	346°, 45%, 47%
HSV	346°, 62%, 69%
XYZ	21.6181, 13.9010, 11.6690
YIQ	102.1420, 56.3430, 30.6710

# Conversions

## Conversions Part 2

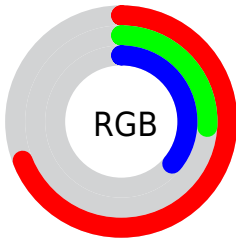
<b>Format</b>	<b>Color</b>
<a href="#">RYB</a>	<a href="#">175, 67, 92</a>
Decimal	<a href="#">11486044</a>
CIELab	<a href="#">44.09, 46.20, 8.61</a>
CIELCh	<a href="#">44, 46.992, 10.551</a>
Yxy	<a href="#">13.9010, 0.4581, 0.2946</a>
Android (android.graphics.Color)	<a href="#">4289676124</a> ( <a href="#">0xFFAF435C</a> )
YUV	<a href="#">102.1420, -5.0000, 63.8965</a>
Hunter-Lab	<a href="#">37.2840, 38.2513, 7.5425</a>

# Details

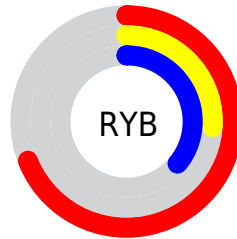
The Android color **4289676124** is a dark color, and the websafe version is hex **CC3366**. A complement of this color would be **4282625942**, and the grayscale version is **4284900966**.

A 20% lighter version of the original color is **4293556366**, and **4285924399** is the 20% darker color. If you saturate the color by 10%, you get **4289671759**, and if you desaturate by 10%, it is **4289680745**.

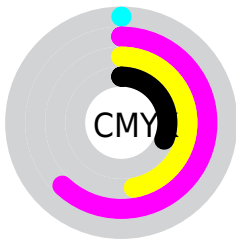
# Distribution



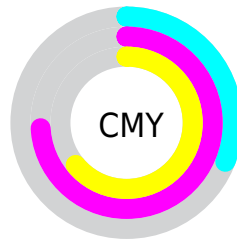
- Red (69%)
- Green (26%)
- Blue (36%)



- Red (69%)
- Yellow (26%)
- Blue (36%)



- Cyan (0%)
- Magenta (62%)
- Yellow (47%)
- Black (31%)



- Cyan (31%)
- Magenta (74%)
- Yellow (64%)

# Brightness & Saturation Gradients

These gradients show how the Android color 4289676124 changes by changing the brightness by 10 percent. The first figure shows a shift by +10% for each color and the second figure -10%.

Similar to the brightness gradients but the following saturation gradients show a change of the Android color 4289676124 by changing the saturation by 10% instead.



 4289676124

 4289676124

4294967295

 4287768645

 4293556366

 4285924399

 4294939560

 4284088346

 4294946756

 4282384384

 4294953951

 4280418305

 4294961404

 4278190080

 4289676124

 4289676124

 4289671759

 4289680745

 4289667137

 4289685111

 4289662772

 4289689732

 4289658921

 4289694098

 4289698719

 4289703085

 4289707706

 4289712072

 4289716693

# Harmonies

## Analogous

The Analogous color harmony consists of three colors that are next to each other on the color wheel.



4288825475



4289676124



4289219895

# Triad

The Triadic color harmony groups three colors that are evenly spaced from another and form a triangle on the color wheel.



4289676124



4282741801



4278219698

# Complementary

The Complementary color scheme is a pair of colors which are on the opposite of each other on the color wheel.



4289676124



4282625942

# Split Complementary

Split-complementary colors differ from the complementary color scheme. The scheme consists of three colors, the original color and two neighbors of the complement color.



4278221210



4289676124



4278221133

# Square

The Square scheme is like the rectangle color scheme, but the four colors are evenly spaced on the color wheel.



4289676124



4285491985



4278221685



4281428149

# Rectangle

The Rectangle color scheme consists of four colors that form a rectangle on the color wheel.



4289676124



4288305187



4278221685



4278220460



# Sweetspot

The Sweet Spot groups the original color and five complimentary colors.



4289676124



4293114050



4288037807



4285749342



4294111986



4285756275



# Same Dimension

The Same Dimension uses a secret algorithm to generate beautiful new colors.



4289676124



4293081954



4289683523



4283911760



4288020515



4279697413



# Inverse Universe

The Inverse Universe completely reimagines the original color for something new.



4289676124



4293081954



4282618543



4283911760



4288020515

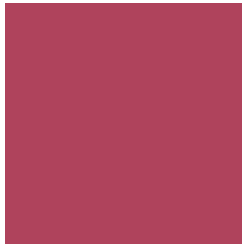


4279697413



# Previews

## White Background



This preview shows how the Android color 4289676124 looks on a white background.

## Color Contrast Check

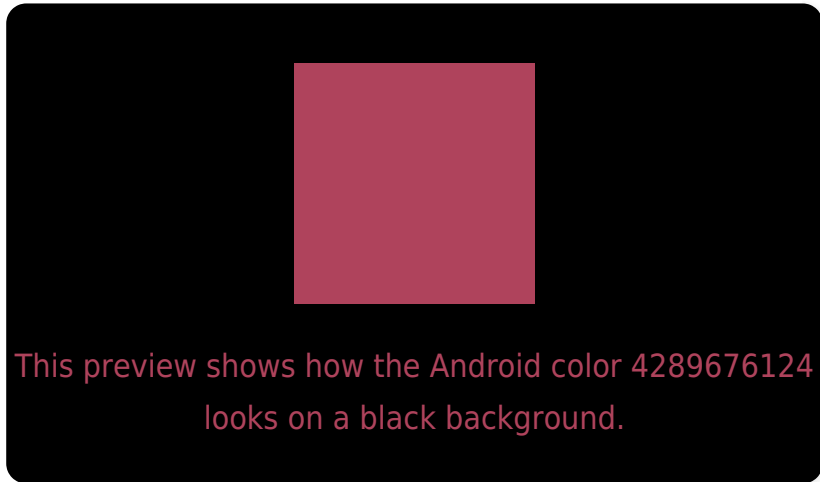
Large Text (above 18pt) WCAG AA ✓ Pass

Any Text WCAG AA ✓ Pass

Large Text (above 18pt) WCAG AAA ✓ Pass

Any Text WCAG AAA × Fail

# Black Background



## Color Contrast Check

Large Text (above 18pt) WCAG AA ✓ Pass

Any Text WCAG AA × Fail

Large Text (above 18pt) WCAG AAA × Fail

Any Text WCAG AAA × Fail

If you want to check with other color combinations, try the [Color Contrast Checker](#).



# Android 4289676124 Background



This preview shows how black text looks on a background with the Android color 4289676124.

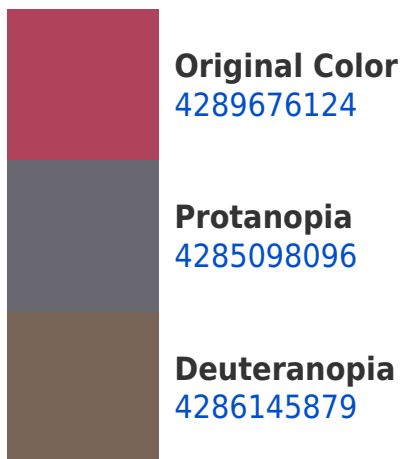


This preview shows how white text looks on a background with the Android color 4289676124.

# Color Blindness Simulation

Color vision deficiency is a very complex topic, and I could not describe the different causes any better than Wikipedia does, so if you want to learn more, you should check out their [article about color blindness](#).

## Dichromacy





# Trichromacy



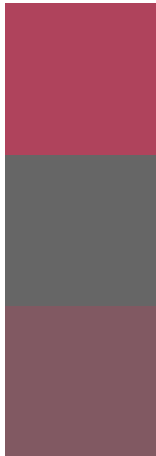
**Original Color**  
4289676124

**Protanomaly**  
4286733161

**Deuteranomaly**  
4287453529

**Tritanomaly**  
4289611089

# Monochromacy



**Original Color**  
4289676124

**Achromatopsia**  
4284900966

**Achromatomaly**  
4286667106

# CSS Examples

## Text

The CSS property to change the color of the text to Android 4289676124 is called "color". The color property can be set on classes, ids or directly on the HTML element.

This example shows how text in the color `rgb(175, 67, 92)` looks like.

```
.text, #text, p{  
    color:rgb(175, 67, 92)  
}
```

If you want to add a text shadow in that color use the text-shadow property, you can generate a text shadow directly with our [CSS Text Shadow Generator](#).

Here you see how black text with a 4 pixel rgb(175, 67, 92) colored shadow looks like.

```
.shadow{ text-shadow: 4px 4px 2px rgb(175, 67, 92) }
```

## Border

The CSS property to change the border of an element to Android 4289676124 is called "border". The border property can be set on classes, ids or directly on the HTML element.

This example shows the color as border, it can be applied via the CSS property "border" or "border-color".

```
.border, #border, table{ border:4px solid rgb(175, 67, 92) }
```

If only the border color should be changed use the property `border-color`.

```
.border{ border-color:rgb(175, 67, 92) }
```

If you want to add a box shadow in that color use:

Here you see how a box with a 4 pixel `rgb(175, 67, 92)` colored shadow looks like.

```
.boxshadow{ -moz-box-shadow:4px 4px 4px  
4px rgb(175, 67, 92); -webkit-box-  
shadow:4px 4px 4px 4px rgb(175, 67, 92);  
box-shadow:4px 4px 4px 4px rgb(175, 67,  
92) }
```

# Background

The CSS property to change the background color of an element to Android 4289676124 is called "background". The background property can be set on classes, ids or directly on the HTML element.

```
.background, #background, body{  
background: rgb(175, 67, 92) }
```

If only the background color should be changed can be used:

```
.background{ background-color: rgb(175, 67,  
92) }
```

This example shows the color as background, it is applied via the CSS property "background".

To optimize and compress your CSS code, you can use our [online CSS compressor and optimizer](#) based on csstidy. If you want to create a linear or radial gradient as background or border, check our [CSS Gradient Generator](#).



Hey! You found this booklet interesting? Support Converting Colors with the new Membership Option!

The pro membership hides all ads, plus gives you double the colors in the color bucket, and more awesome pro features!

**[Learn more, Memberships starting at \\$2.50/m!](#)**

**Follow me  
on Twitter!**

@ConvertingColor